

Thursley Hall, Haslemere, Surrey







A distinguished country house of the Victorian period with splendid reception rooms and a wonderful unspoilt outlook with distant views.

Summary of accommodation

Lot 1: Thursley Hall

Three main reception rooms | Eight bedroom suites | Open plan kitchen/breakfast room

Leisure complex including indoor swimming pool, spa, games room/gymnasium | Cinema | Music room

Three double garages with loft space

Two bedroom staff annexe

Approximately 13,983 sq ft

In all about 2.59 acres

Lot 2: Thursley Lodge

Attractive period cottage with living room, sitting room, kitchen, study, two bedrooms, two bathrooms

Approximately 1,702 sq ft

In all about 0.92 acres

Distances

Haslemere 1 mile (Trains to Waterloo from 49 minutes), Godalming 9.2 miles (trains to Waterloo from 47 minutes), Guildford 15 miles (trains to Waterloo from 35 minutes), Gatwick Airport 34 miles, Heathrow Airport 36 miles, Central London 45 miles (All distances and times approximate)



Knight Frank Haslemere
1 West Street
Haslemere
GU27 2AB
knightfrank.co.uk

Russell Grieve
01428 770562
russell.grieve@knightfrank.com

Knight Frank Country Department
55 Baker Street
London
W1U 8AN
knightfrank.co.uk

James Crawford
020 7861 1065
james.crawford@knightfrank.com

Situation

The popular attractive market town of Haslemere lies about 15 miles south west of Guildford, between Weydown Common and Blackdown Ridge. This ancient settlement borders Surrey, West Sussex and Hampshire. There is an excellent range of local amenities including Waitrose, Marks & Spencer, banks, restaurants, pubs, schools and a mainline train station (services to London Waterloo from 49 minutes). Guildford offers a more extensive range of shopping and leisure facilities. The high street has a Town Hall, Museum, cinema nearby and there is a farmers' market regularly. The A3 provides access to London, the M25, international airports and the coast. Much of the surrounding countryside belongs to the National Trust at the top of the hill and Hindhead Common, an Area of Outstanding Natural beauty, therefore offering great opportunities for riding and walking.

Thursley Hall

Thursley Hall is a landmark family home occupying a private, elevated position located along an ancient sunken lane in the hills of Haslemere with superb access to the A3, yet offering outstanding rural views across the Polecat Valley to the hills of The South Downs. The property is accessed through CCTV-controlled electric gates at Thursley Lodge leading to a long winding private drive lined with mature trees.



This has recently been re-laid to tarmac with rustic stone chippings. It currently has approximately 15,000 square feet of living space with well-proportioned rooms and high ceilings and the curtilage is approximately 2.59 acres.

This magnificent Victorian country house was built in around 1884, possibly for a wealthy Dutch family owing to a number of characteristics, which include the belfry and stained glass windows, some of which are believed to date back to 1665. The house itself, which is not listed, is in imposing Bargate stone with hanging tiled elevations and broad window bays taking full advantage of the elevated aspect this property enjoys.

In addition to the three impressive main reception rooms is a grand central staircase hall and a fabulous large open plan kitchen/breakfast room with doors out to the extensive terrace. Leisure facilities include a 15m x 10m indoor pool with steam room and changing rooms, together with an excellent first floor games room/gym.

On the first floor is a large principal bedroom suite with dressing room and en suite bathroom, with two further en suite bedrooms. On the top floor there are five further bedroom suites and storage. On the lower ground floor is a music room, cinema and wine cellar.













Lot 2: Thursley Lodge

At the entrance is a charming lodge cottage understood to be of the similar period to the main house.

Comprising living room, sitting room, kitchen, study, two bedrooms, two bathrooms and set within its own garden together with a parking area off the lane.



Thursley Lodge



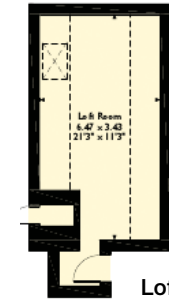
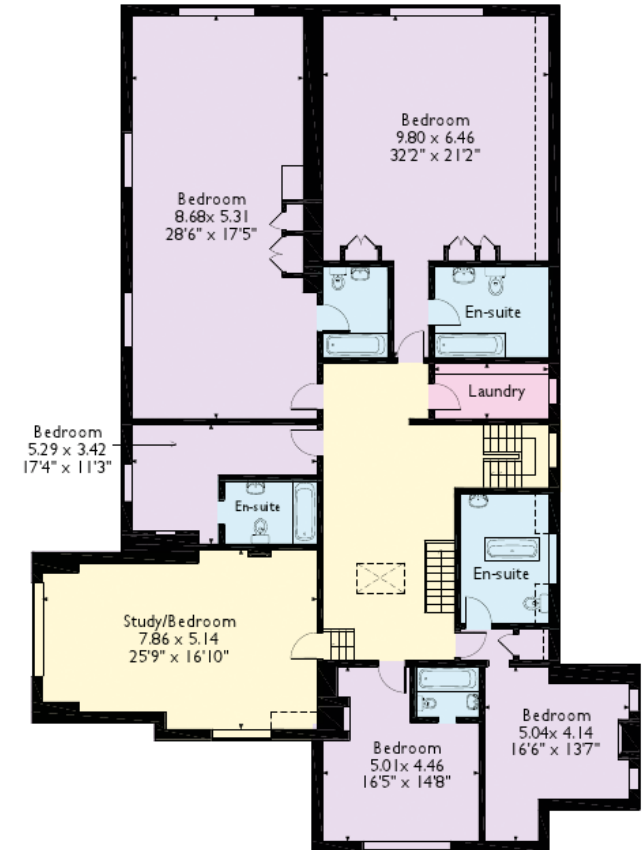
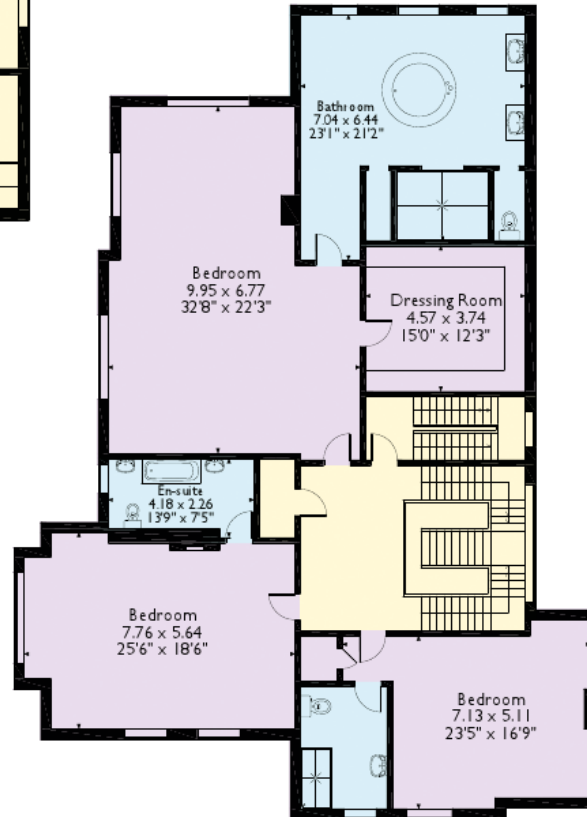
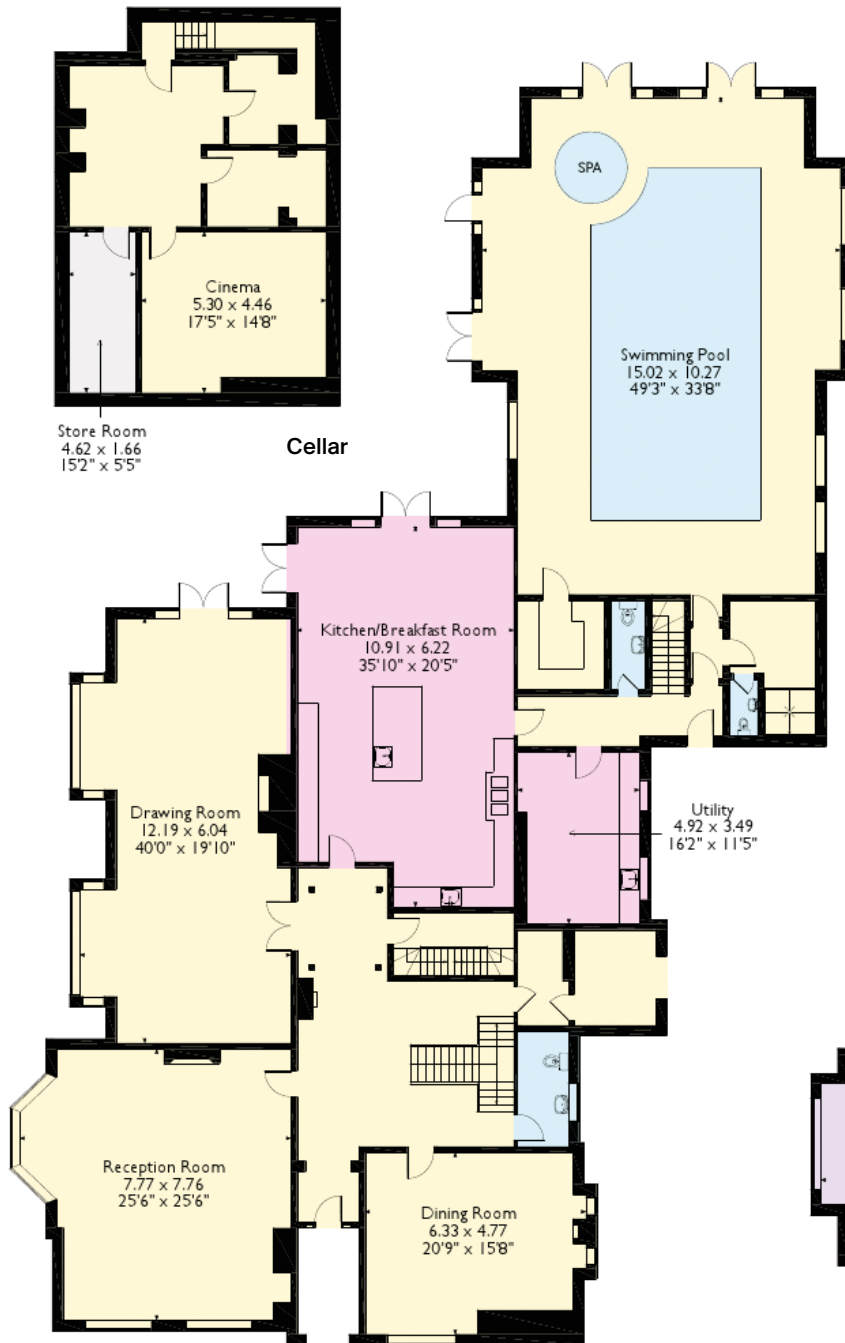
Thursley Lodge

Thursley Hall

Approximate Gross Internal Floor Area
1,299 sq m / 13,983 sq ft

This plan is for guidance only and must not be relied upon as a statement of fact. Attention is drawn to the Important Notice on the last page of the text of the Particulars.

- Reception
- Bedroom
- Bathroom
- Kitchen/Utility
- Storage
- Outside



Ground Floor

First Floor

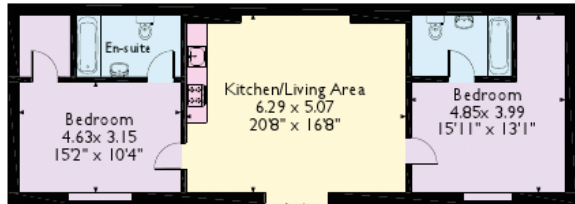
Second Floor

Thursley Lodge

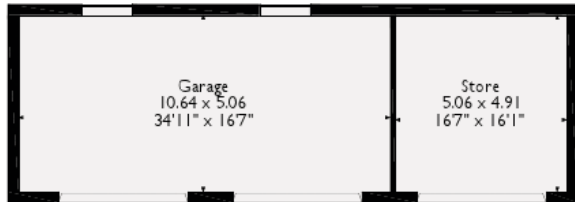
Approximate Gross Internal Floor Area

158 sq m / 1702 sq ft

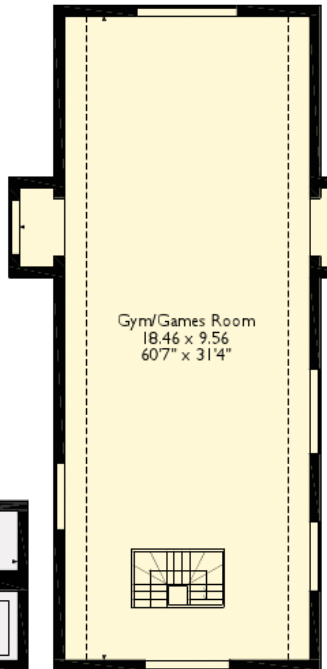
Outbuildings: 159 Sq m / 1710 Sq ft



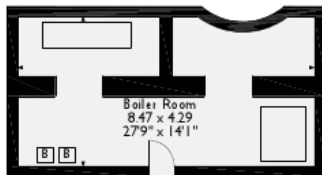
Outbuilding Lower Ground Floor (Staff Annexe)



Outbuilding Ground Floor



First Floor (Pool Area)



Lower Ground Floor
(Under Pool Area)





Gardens and grounds

The grounds extend to approximately 2.59 acres and are laid mainly to lawn and bounded by mature trees, with a bridleway and a large belt of woodland, affording the property greater privacy. There are three ponds in the main garden with the largest stocked with numerous mature lilies, Koi carp and other freshwater fish, fed by a filtering pond with mini waterfall and draining through a larger boulder-clad waterfall into a fully pumped drainage pond. A further pond lies in the grounds of the Lodge House.

A further mature rockery garden/ornamental stream is well stocked with herbaceous beds, shrub beds and mature horse chestnut and Douglas firs, and leads to the garages via a flight of stone stairs and a 'hidden' secondary external stairway.

The terrace outside the pool and kitchen has external speakers connecting to the house sound system and LED ground lighting bordering the dining area. There is also an external lighting circuit including LEDs integrated within the pond decking, stairways, garage, driveway and informal gardens.

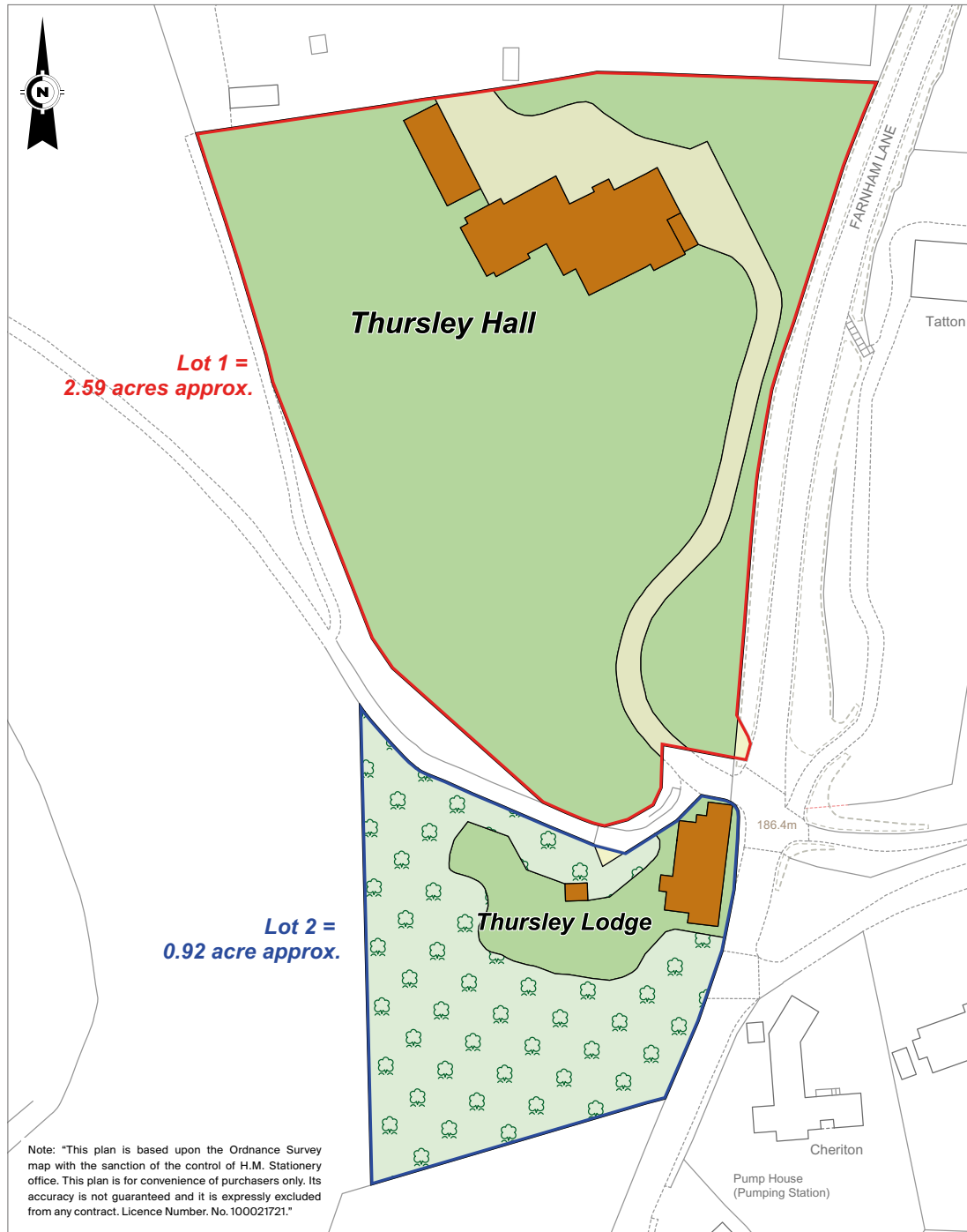




Outbuildings and staff annexe

There are several outbuildings including a self-contained two en suite bedroom garden flat with kitchen/dining area which leads to the gardens and decking surrounding the ponds and streams. This is ideal for staff or guests. The garage complex consists of three double garages with hand and car remote controlled double paneled garage doors and accessible storage space above.





Property information

Tenure: Freehold

Local Authority: Waverley Borough Council

Council Tax: Thursley Hall: Band H, Thursley Lodge: Band G

EPC Rating: Thursley Hall: C, Thursley Lodge: E

Viewings

Strictly through appointment with Knight Frank.

Directions (GU27 IHA)



Fixtures and fittings: A list of the fitted carpets, curtains, light fittings and other items fixed to the property which are included in the sale (or may be available by separate negotiation) will be provided by the Seller's Solicitors.

Important Notice: 1. Particulars: These particulars are not an offer or contract, nor part of one. You should not rely on statements by Knight Frank LLP in the particulars or by word of mouth or in writing ("information") as being factually accurate about the property, its condition or its value. Neither Knight Frank LLP nor any joint agent has any authority to make any representations about the property, and accordingly any information given is entirely without responsibility on the part of the agents, seller(s) or lessor(s). 2. Photos, Videos etc: The photographs, property videos and virtual viewings etc. show only certain parts of the property as they appeared at the time they were taken. Areas, measurements and distances given are approximate only. 3. Regulations etc: Any reference to alterations to, or use of, any part of the property does not mean that any necessary planning, building regulations or other consent has been obtained. A buyer or lessee must find out by inspection or in other ways that these matters have been properly dealt with and that all information is correct. 4. VAT: The VAT position relating to the property may change without notice. 5. To find out how we process Personal Data, please refer to our Group Privacy Statement and other notices at <https://www.knightfrank.com/legals/privacy-statement>.

Particulars dated October 2022. Photographs dated 2021 and October 2022.

Knight Frank is the trading name of Knight Frank LLP. Knight Frank LLP is a limited liability partnership registered in England and Wales with registered number OC305934. Our registered office is at 55 Baker Street, London W1U 8AN where you may look at a list of members' names. If we use the term 'partner' when referring to one of our representatives, that person will either be a member, employee, worker or consultant of Knight Frank LLP and not a partner in a partnership. If you do not want us to contact you further about our services then please contact us by either calling 020 3544 0692, email to marketing.help@knightfrank.com or post to our UK Residential Marketing Manager at our registered office (above) providing your name and address.

Brochure by wordperfectprint.com

