

# FIELD VIEW

AN EXCLUSIVE COLLECTION OF FOUR  
LUXURY FIVE BEDROOM HOMES



MH  
MATFORD  
HOMES







# WELCOME TO FIELD VIEW

## Minsterworth, Gloucestershire

---

Nestled amongst the rolling hills of the Cotswold countryside, a unique and exclusive development of four new dwellings is brought to the market within the desirable village of Minsterworth. As one of the most desirable locations in Gloucestershire, Field View offers a taste of rural life within a quaint community that is immersed in history, whilst being in close proximity to the city of Gloucester and Cheltenham town, where upmarket and contemporary amenities await.

Designed thoughtfully to accommodate modern day living and family values, the properties offer an extraordinary wealth

of interior space, with each home detailing five bedrooms, luxurious ensembles and custom designed kitchens as standard. On the ground floors, open plan living extends through the impressive bi-folds to the landscaped gardens and stunning field views beyond – an organic and peaceful setting for even the busiest of households.

Each house will have a bespoke and individual finish which is a superb canvas for you to create your dream home.

**Discover your new home within this unique collection today.**

---

Field View is the quintessence of modern family living.





1

2

3

4







“

A beautiful development that offers  
luxurious living, bespoke interiors and  
a spectacular outlook.

---

With family and village life at its core, the development is set back with private access through electric gates – an entry that surely mirrors the exclusivity of the homes inside. Individual paved driveways lead up to each one of the four properties

With just four luxurious properties available, each one individually designed and beautifully crafted, the site offers a rare and desirable balance between countryside and cosmopolitan living.

















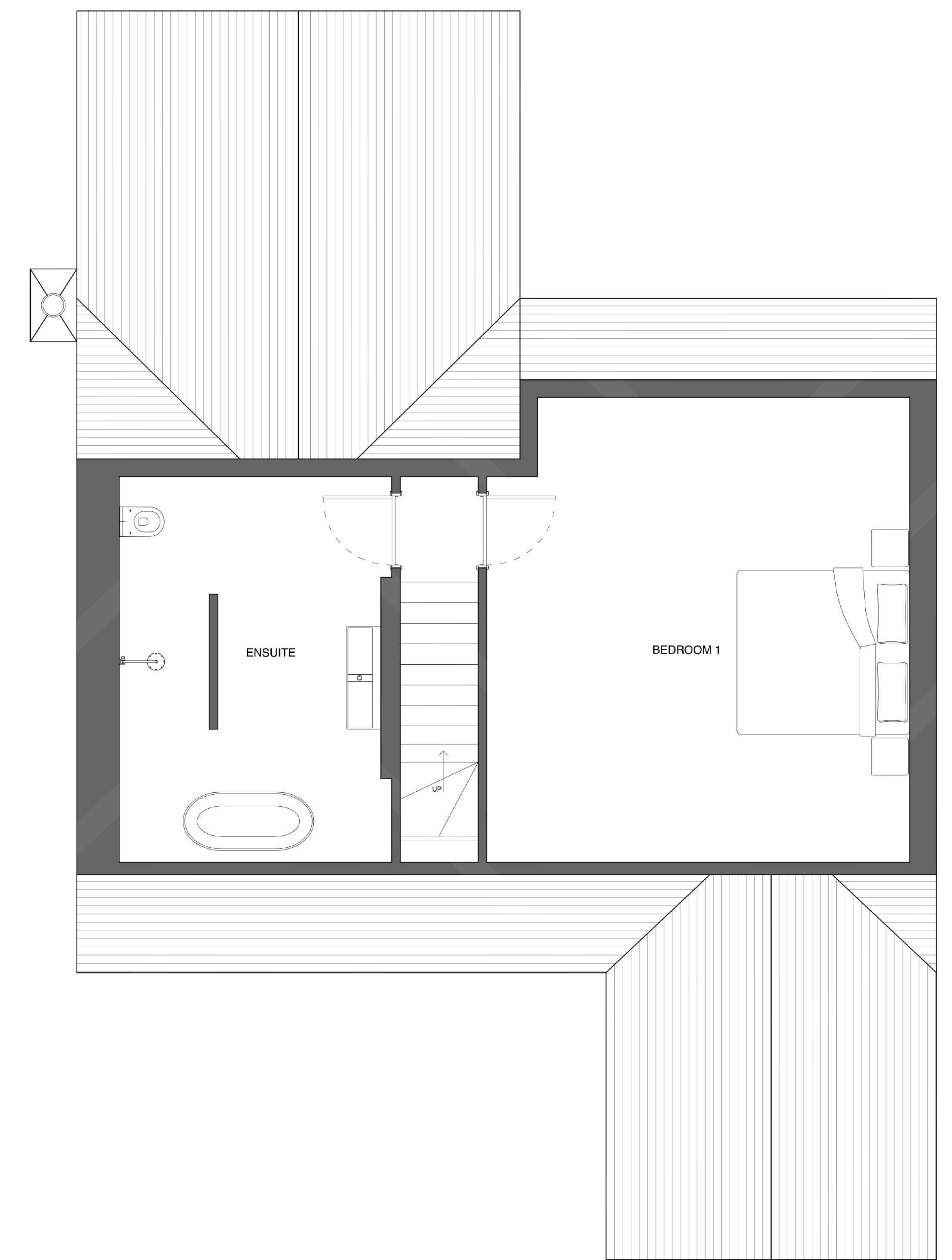
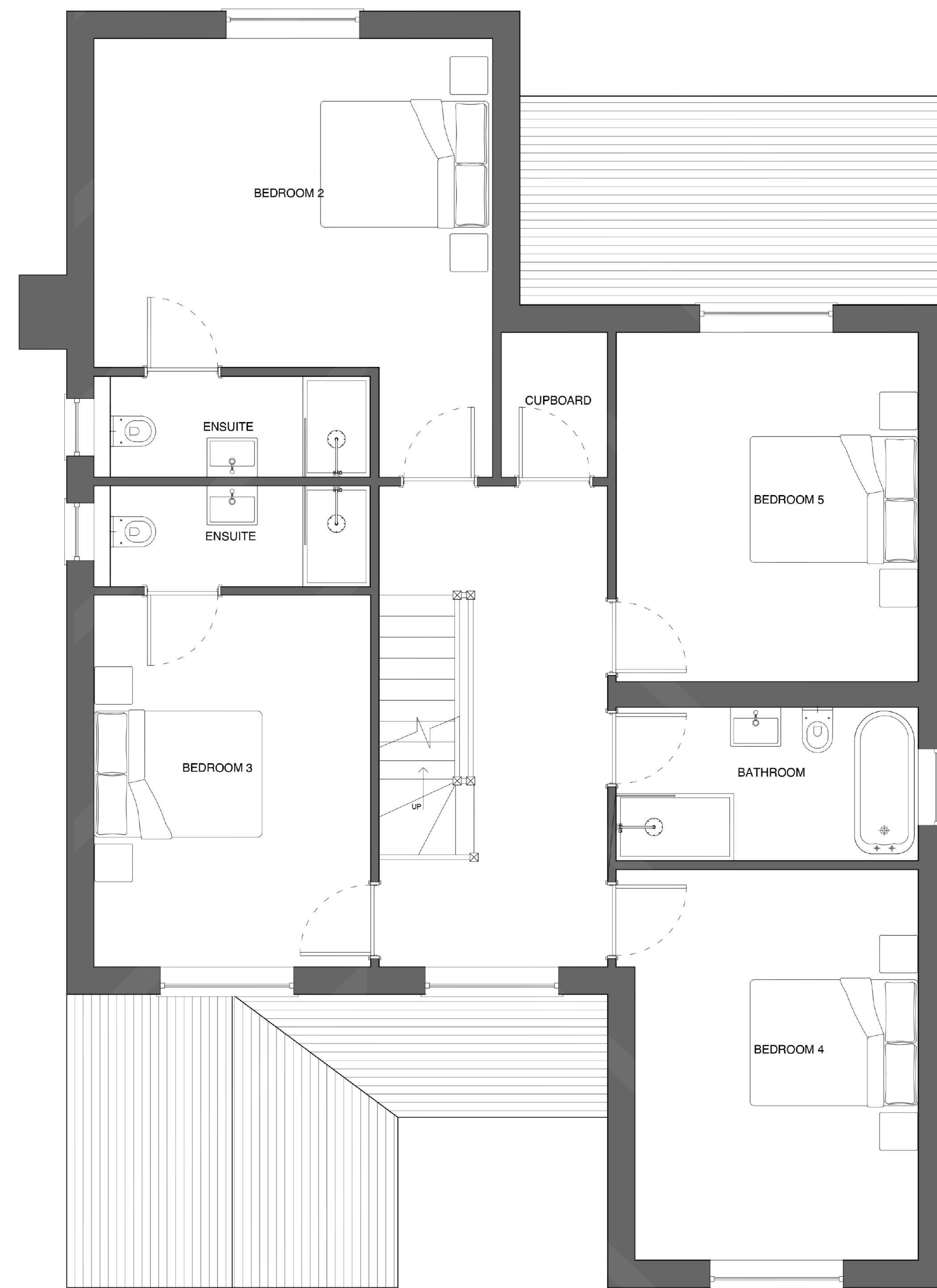




HOUSE TYPE 1

Montfort House &  
Malvern View





Total Area: 283.5m<sup>2</sup>

### Ground Floor

Total Area: 130m<sup>2</sup>

Kitchen/Dining/Living: 9.8m x 6.55m  
 Snug: 3.29m x 4.4m  
 WC: 1.8m x 1.3m  
 Utility: 3.26m x 2.19m  
 Playroom: 3.37m x 3.42m  
 Office: 3.17m x 3.17m

### First Floor

Total Area: 104m<sup>2</sup>

Bedroom 2: 4.74m x 3.9m  
 Bedroom 3: 4.42m x 3.29m  
 Bedroom 4: 4.65 x 3.37m  
 Bedroom 5: 4.16m x 3.59m  
 Bathroom: 3.6m x 2.0m  
 Ensuite: 3.1m x 1.2m

### Second Floor

Total Area: 49.5m<sup>2</sup>

Bedroom 1: 5.66m x 5.14m  
 Ensuite: 4.67m x 3.31m

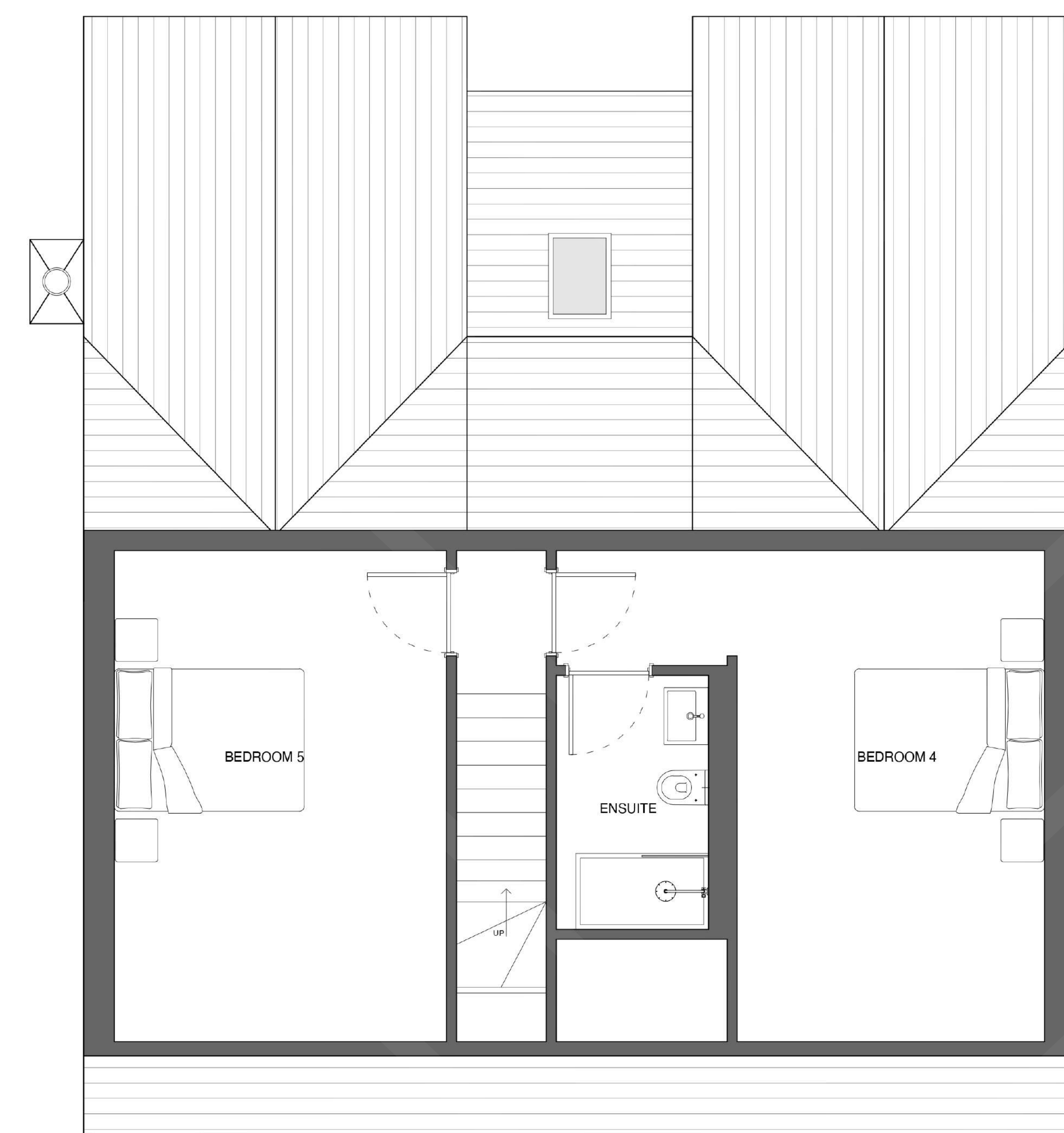
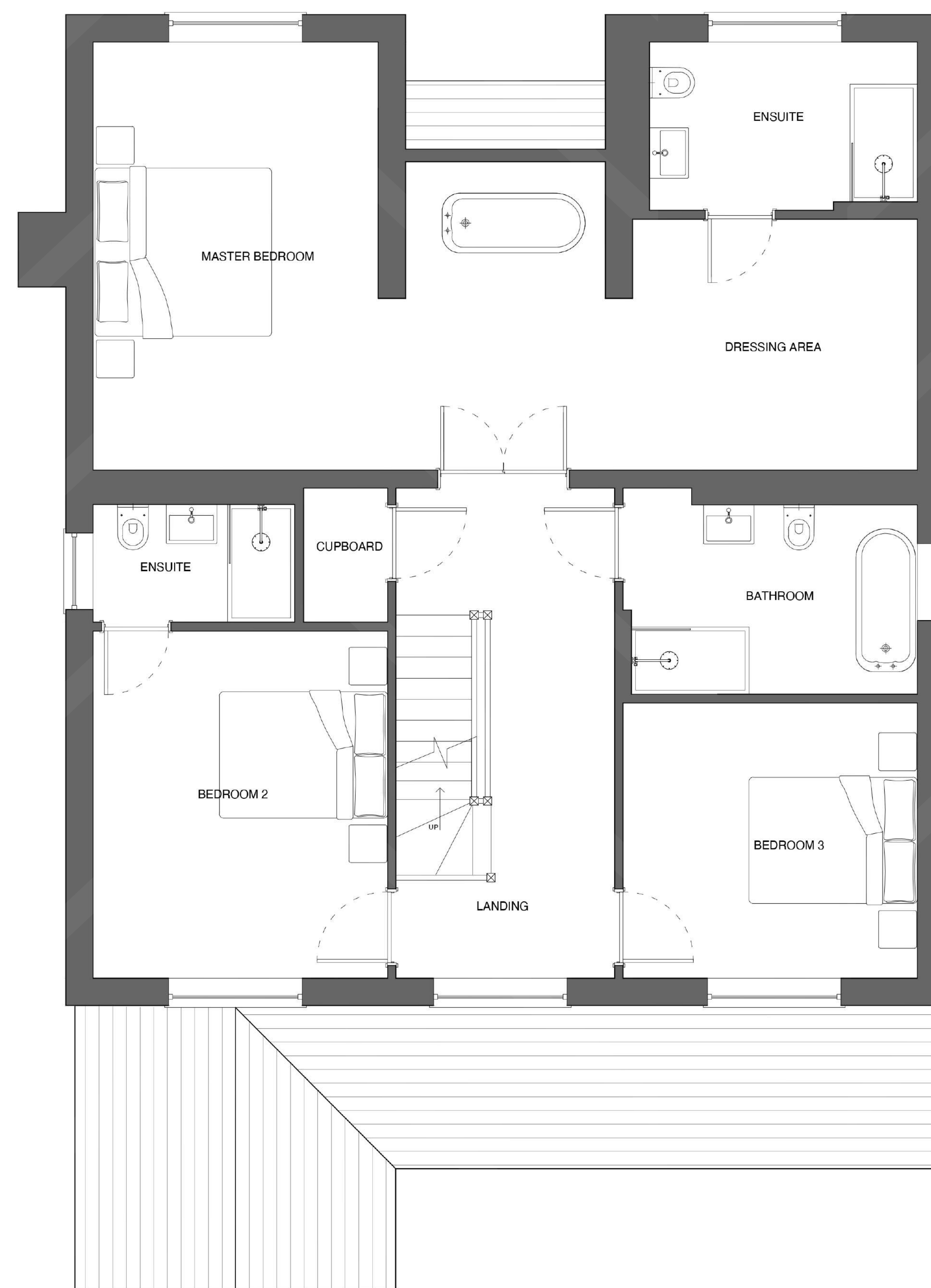
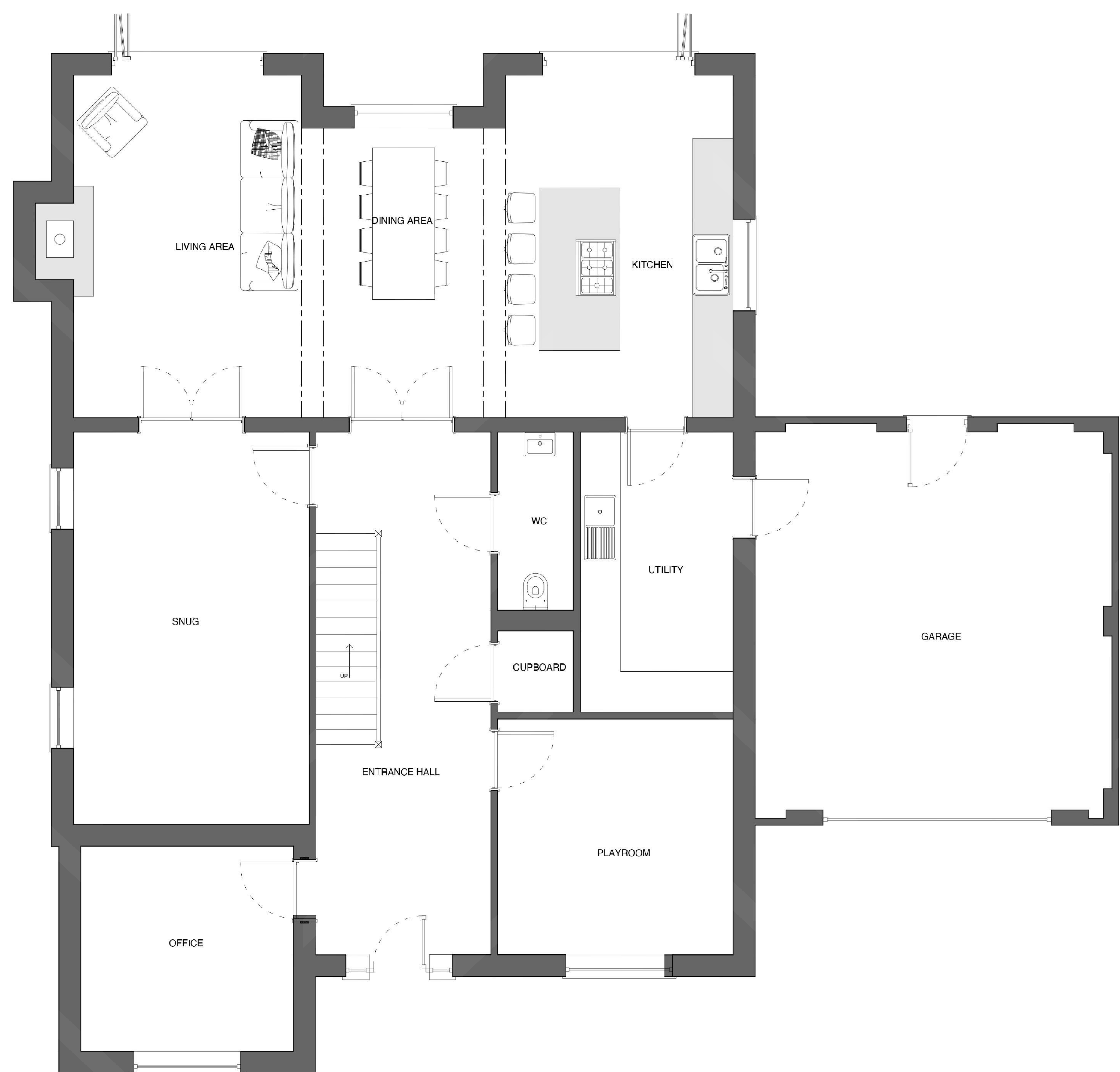




HOUSE TYPE 2

Calcott House &  
Severn House





Total Area: 314m<sup>2</sup>

### Ground Floor

Total Area: 160m<sup>2</sup>

|                        |               |
|------------------------|---------------|
| Kitchen/Dining/Living: | 9.8m x 5.1m   |
| Snug:                  | 5.82m x 3.5m  |
| WC:                    | 2.65m x 1.12m |
| Utility:               | 4.16m x 2.27m |
| Playroom:              | 3.5m x 3.5m   |
| Office:                | 3.16m x 3.17m |
| Garage:                | 5.87m x 5.3m  |

### First Floor

Total Area: 104m<sup>2</sup>

|                 |              |
|-----------------|--------------|
| Master Bedroom: | 5.1m x 3.4m  |
| Dressing Area:  | 3.4m x 3.0m  |
| Ensuite:        | 3.4m x 2.0m  |
| Bedroom 2:      | 3.5m x 4.12m |
| Ensuite:        | 2.4m x 1.6m  |
| Bedroom 3:      | 4.5m x 3.29m |
| Bathroom:       | 3.6m x 2.0m  |

### Second Floor

Total Area: 50m<sup>2</sup>

|            |             |
|------------|-------------|
| Bedroom 4: | 5.1m x 3.2m |
| Ensuite:   | 2.7m x 1.6m |
| Bedroom 5: | 5.1m x 3.4m |



“

Field View is the next chapter in Minsterworth's journey to combining the area's rich and rural history with the latest thriving cosmopolitan offerings.

---

Steeped in a wealth of history and natural beauty, Minsterworth's latest development is nestled between stunning countryside views, highly accelaied independant amenities and the metropolitan city of Gloucester.

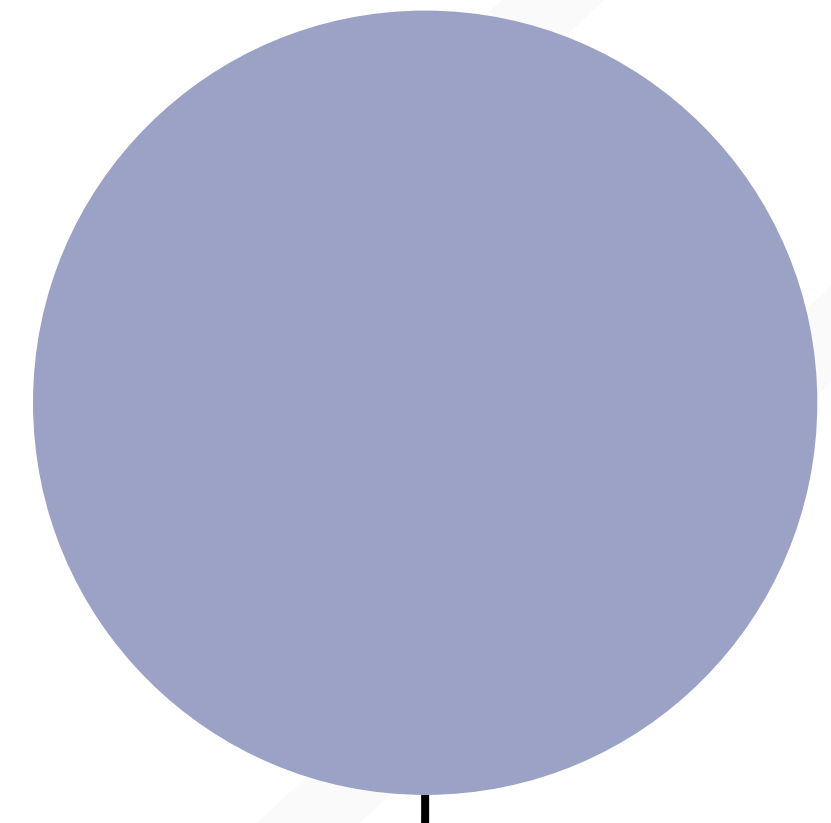
The village itself remains a quaint and peaceful image on the surface whilst providing a variety of unique and in-demand delights including the phenomenal Severn and Wye Smokery and Restaurant, a local water ski club and much more.





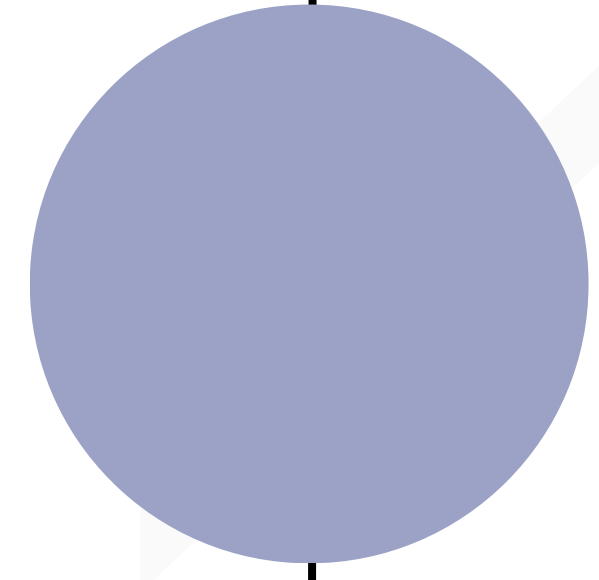


# Well Connected



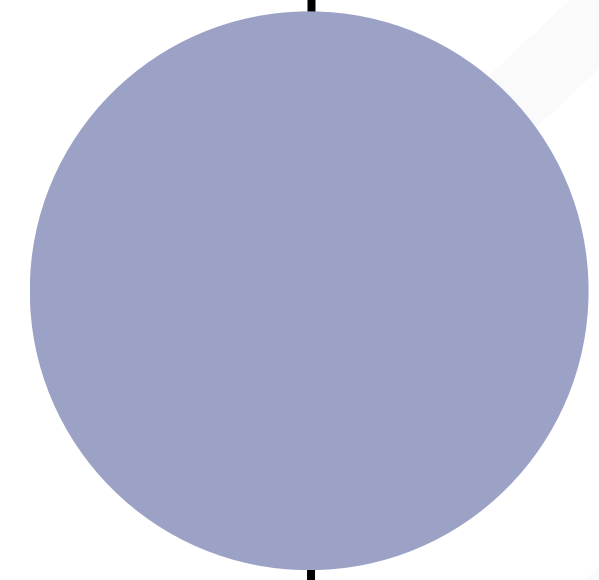
**FIELD VIEW**

Home



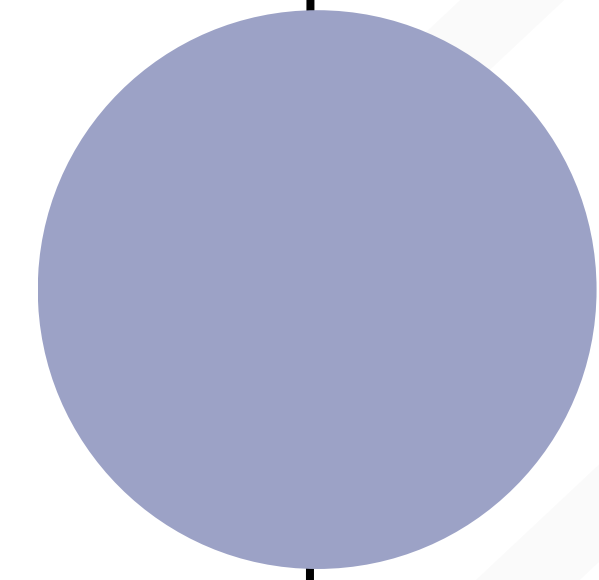
**GLOUCESTER**

5 miles



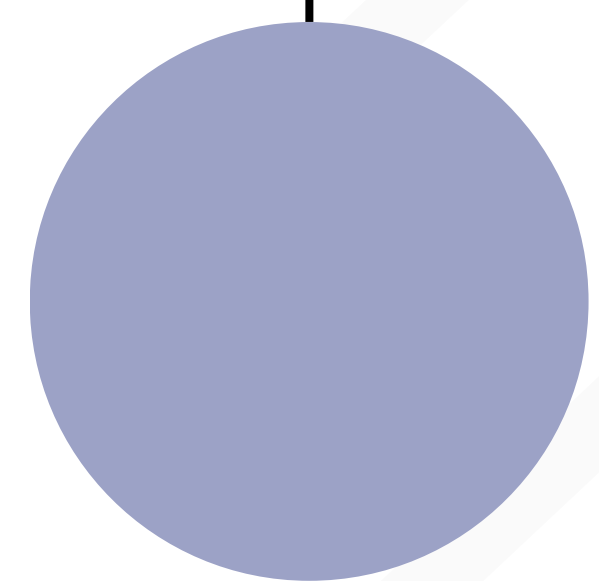
**CHELTHENHAM**

12 miles



**BRISTOL**

38 miles



**LONDON PADDINGTON**

104 miles

Direct trains from Gloucester 2hrs 15mins











CONTACT OUR AGENTS  
SARAH MCKINNON AND KATY REYNOLDS  
FOR MORE INFORMATION



01242 246963

[cheltenhamnewhomes@knightfrank.com](mailto:cheltenhamnewhomes@knightfrank.com)





MH  
MATFORD  
HOMES