

FIELD VIEW

AN EXCLUSIVE COLLECTION OF FOUR
LUXURY FIVE BEDROOM HOMES



MH
MATFORD
HOMES

WELCOME TO FIELD VIEW

Minsterworth, Gloucestershire

Nestled amongst the rolling hills of the Cotswold countryside, a unique and exclusive development of four new dwellings is brought to the market within the desirable village of Minsterworth. As one of the most desirable locations in Gloucestershire, Field View offers a taste of rural life within a quaint community that is immersed in history, whilst being in close proximity to the city of Gloucester and Cheltenham town, where upmarket and contemporary amenities await.

Designed thoughtfully to accommodate modern day living and family values, the properties offer an extraordinary wealth

of interior space, with each home detailing five bedrooms, luxurious ensembles and custom designed kitchens as standard. On the ground floors, open plan living extends through the impressive bi-folds to the landscaped gardens and stunning field views beyond – an organic and peaceful setting for even the busiest of households.

Each house will have a bespoke and individual finish which is a superb canvas for you to create your dream home.

Discover your new home within this unique collection today.

Field View is the quintessence of modern family living.





“

A beautiful development that offers
luxurious living, bespoke interiors and
a spectacular outlook.

With family and village life at its core, the development is set back with private access through electric gates – an entry that surely mirrors the exclusivity of the homes inside. Individual paved driveways lead up to each one of the four properties

With just four luxurious properties available, each one individually designed and beautifully crafted, the site offers a rare and desirable balance between countryside and cosmopolitan living.



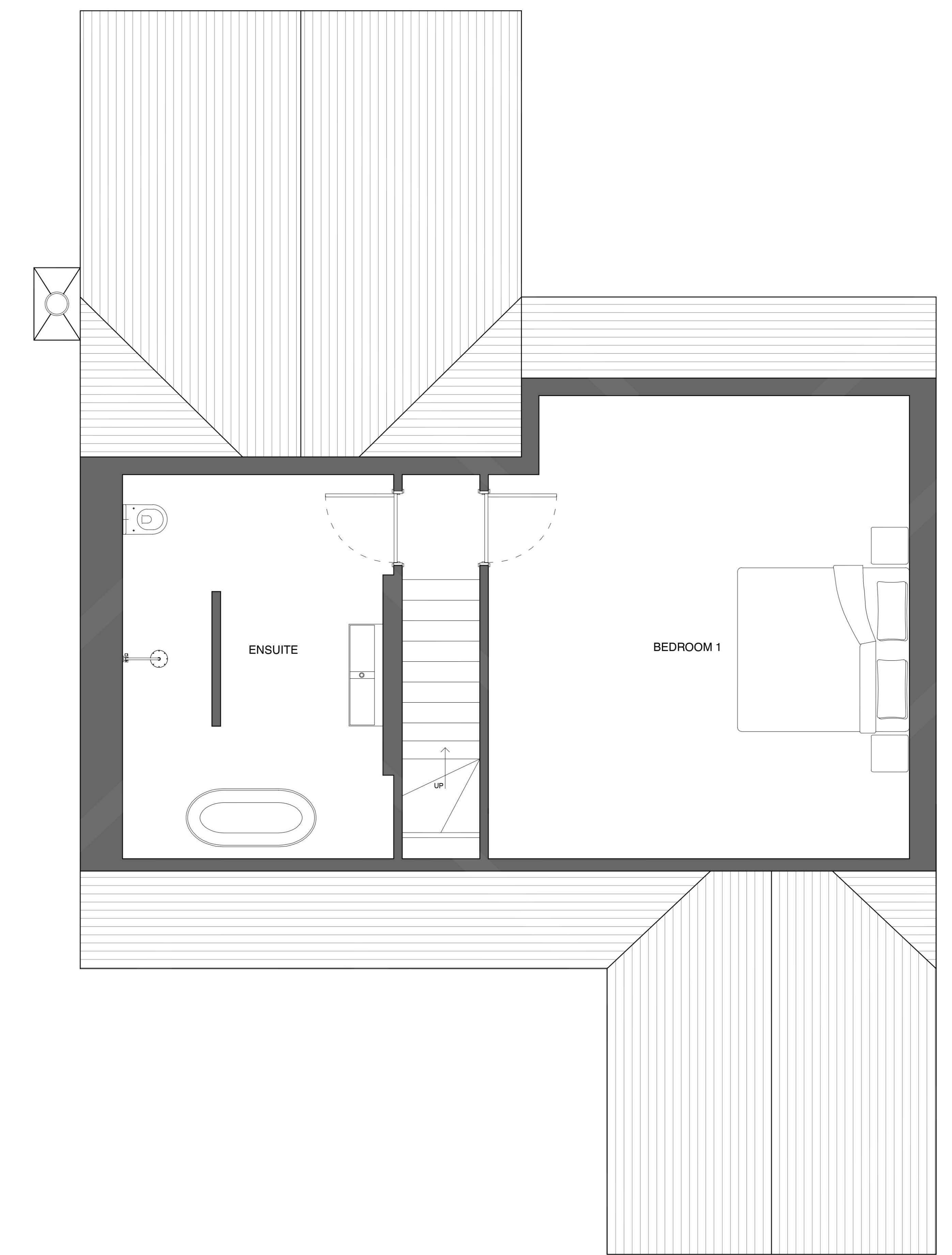
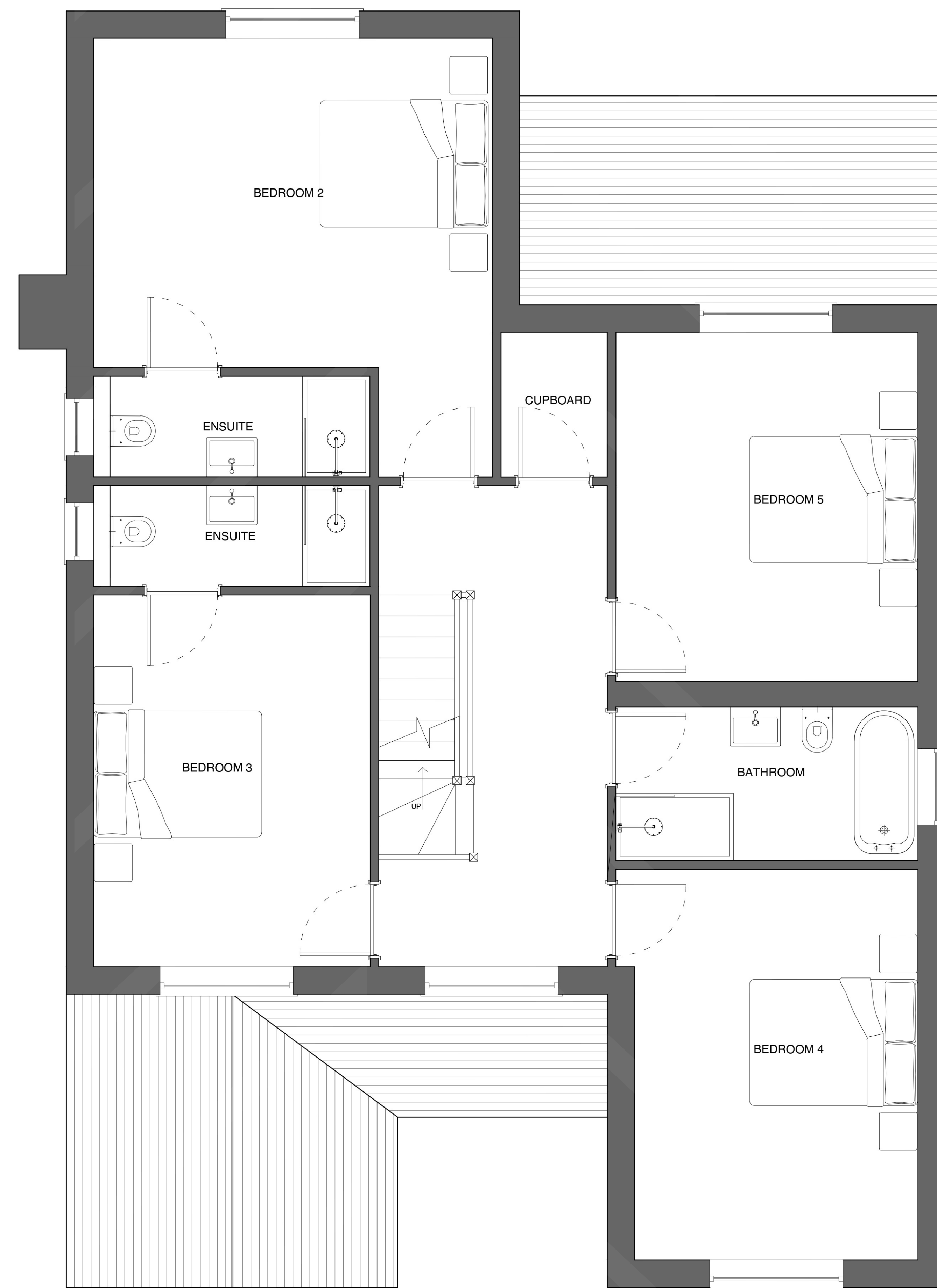
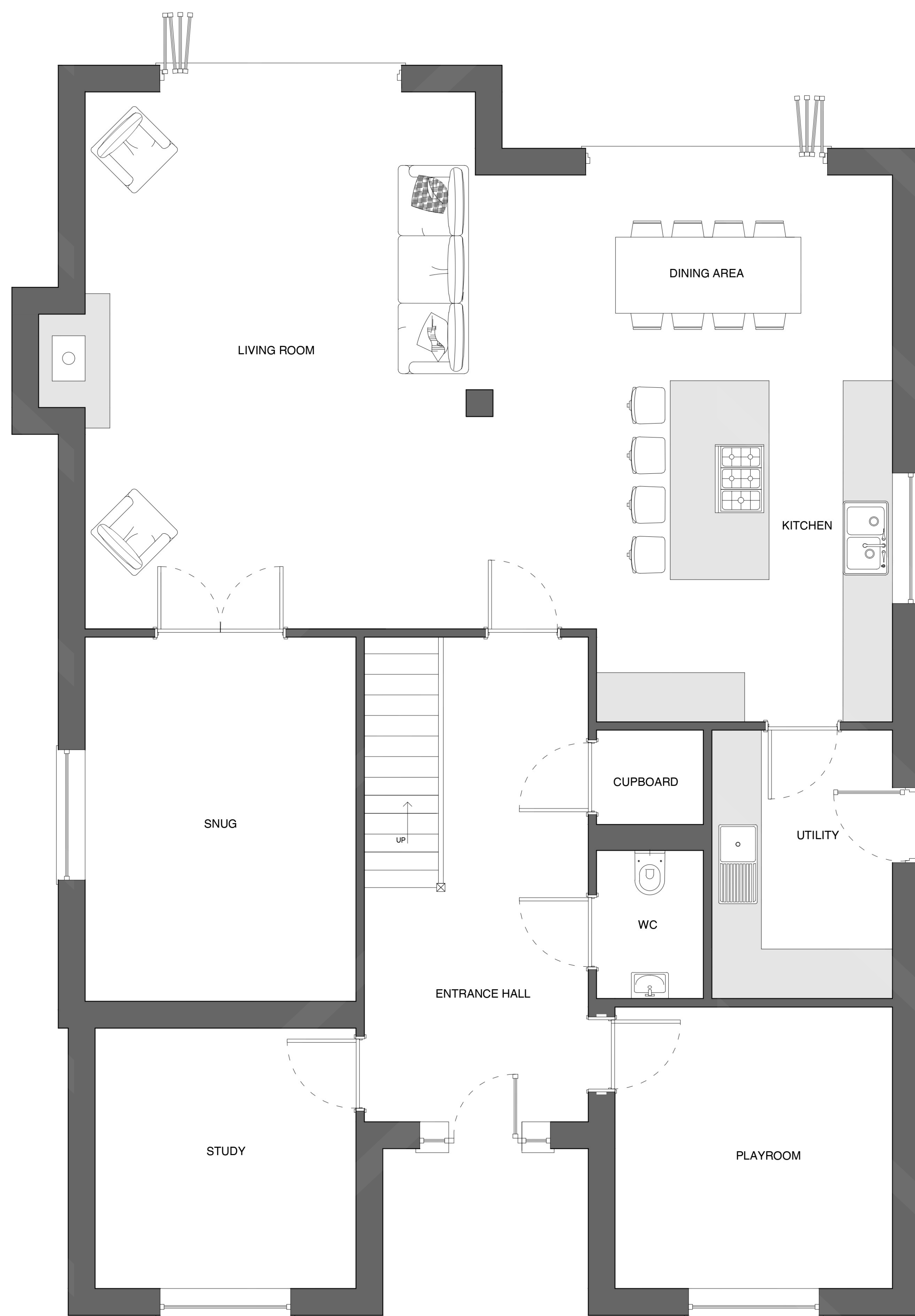








HOUSE TYPE 1
The Oaks



Total Area: 283.5m²

Ground Floor

Total Area: 130m²

Kitchen/Dining/Living: 9.8m x 6.55m
 Snug: 3.29m x 4.4m
 WC: 1.8m x 1.3m
 Utility: 3.26m x 2.19m
 Playroom: 3.37m x 3.42m
 Office: 3.17m x 3.17m

First Floor

Total Area: 104m²

Bedroom 2: 4.74m x 3.9m
 Bedroom 3: 4.42m x 3.29m
 Bedroom 4: 4.65 x 3.37m
 Bedroom 5: 4.16m x 3.59m
 Bathroom: 3.6m x 2.0m
 Ensuite: 3.1m x 1.2m

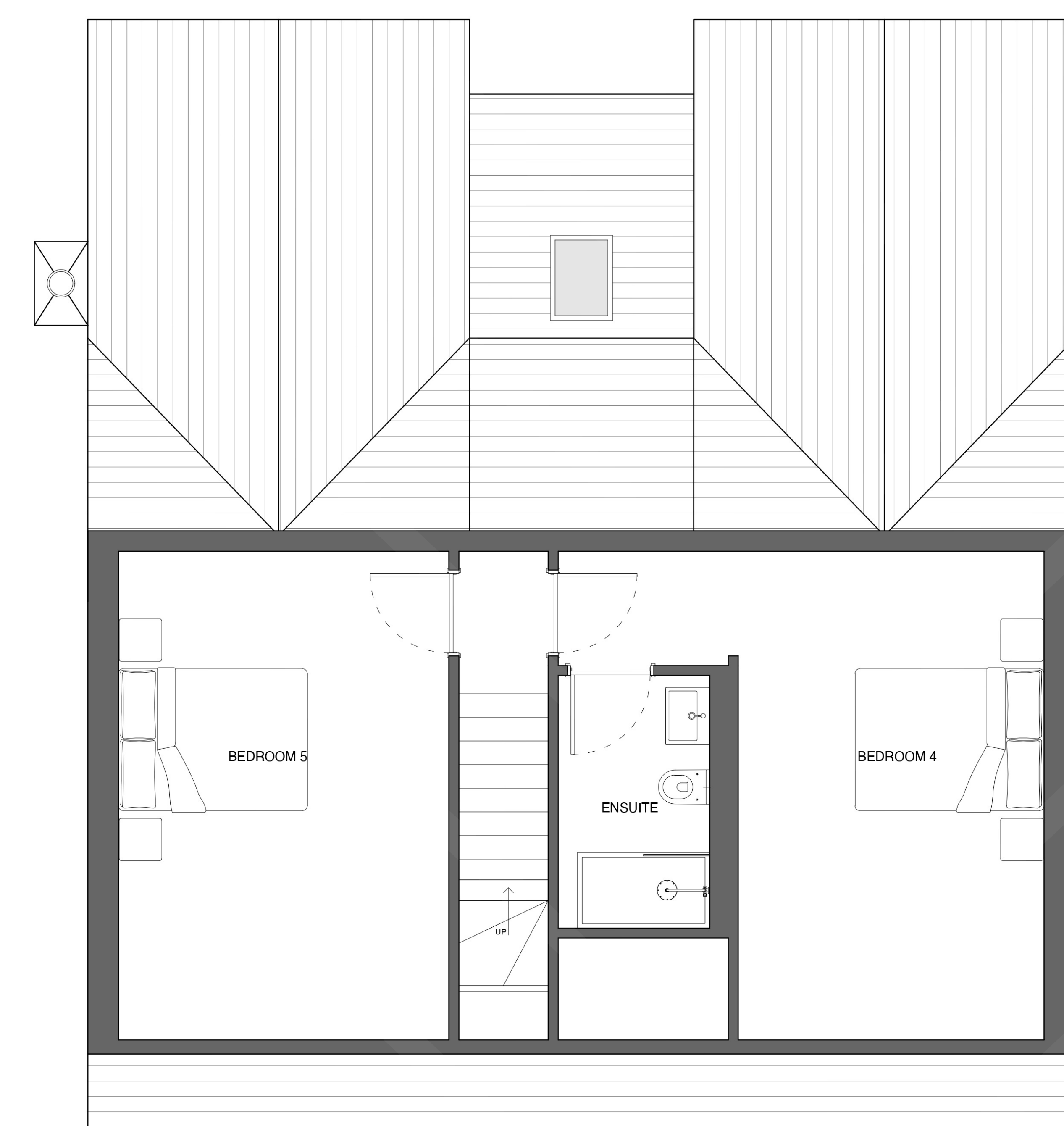
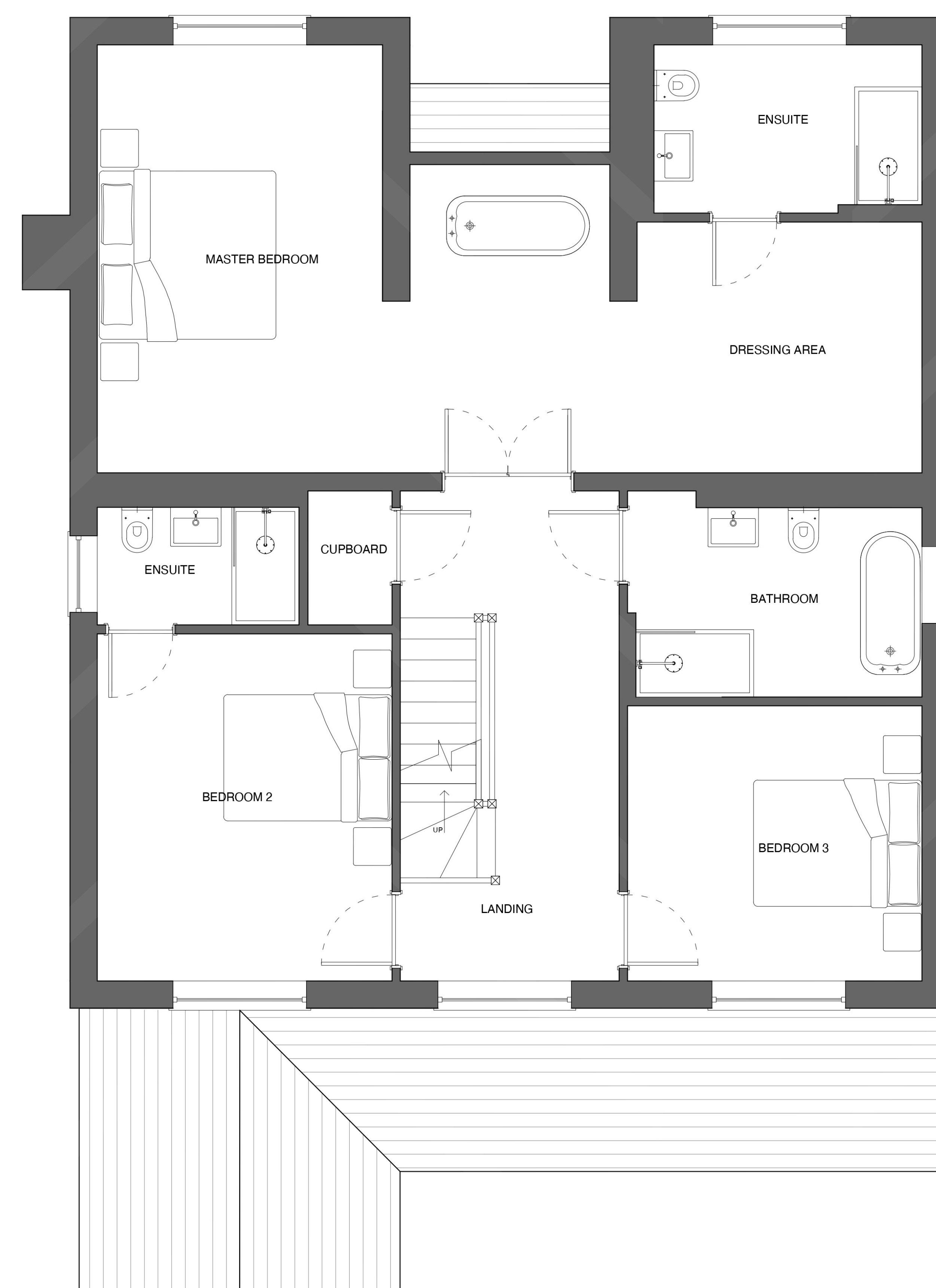
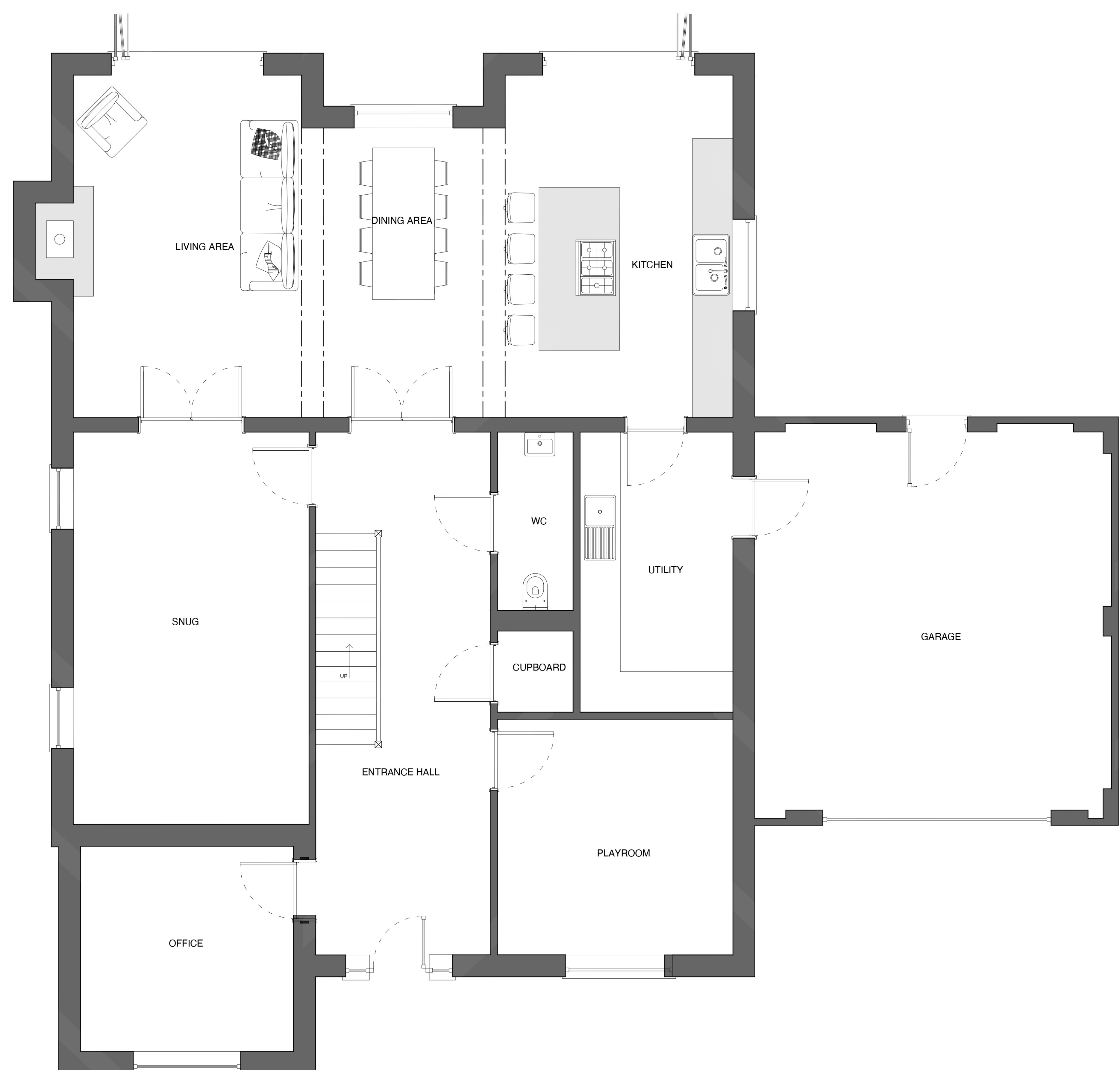
Second Floor

Total Area: 49.5m²

Bedroom 1: 5.66m x 5.14m
 Ensuite: 4.67m x 3.31m



HOUSE TYPE 2
The Firs



Total Area: 314m²

Ground Floor

Total Area: 160m²

Kitchen/Dining/Living:	9.8m x 5.1m
Snug:	5.82m x 3.5m
WC:	2.65m x 1.12m
Utility:	4.16m x 2.27m
Playroom:	3.5m x 3.5m
Office:	3.16m x 3.17m
Garage:	5.87m x 5.3m

First Floor

Total Area: 104m²

Master Bedroom:	5.1m x 3.4m
Dressing Area:	3.4m x 3.0m
Ensuite:	3.4m x 2.0m
Bedroom 2:	3.5m x 4.12m
Ensuite:	2.4m x 1.6m
Bedroom 3:	4.5m x 3.29m
Bathroom:	3.6m x 2.0m

Second Floor

Total Area: 50m²

Bedroom 4:	5.1m x 3.2m
Ensuite:	2.7m x 1.6m
Bedroom 5:	5.1m x 3.4m

“

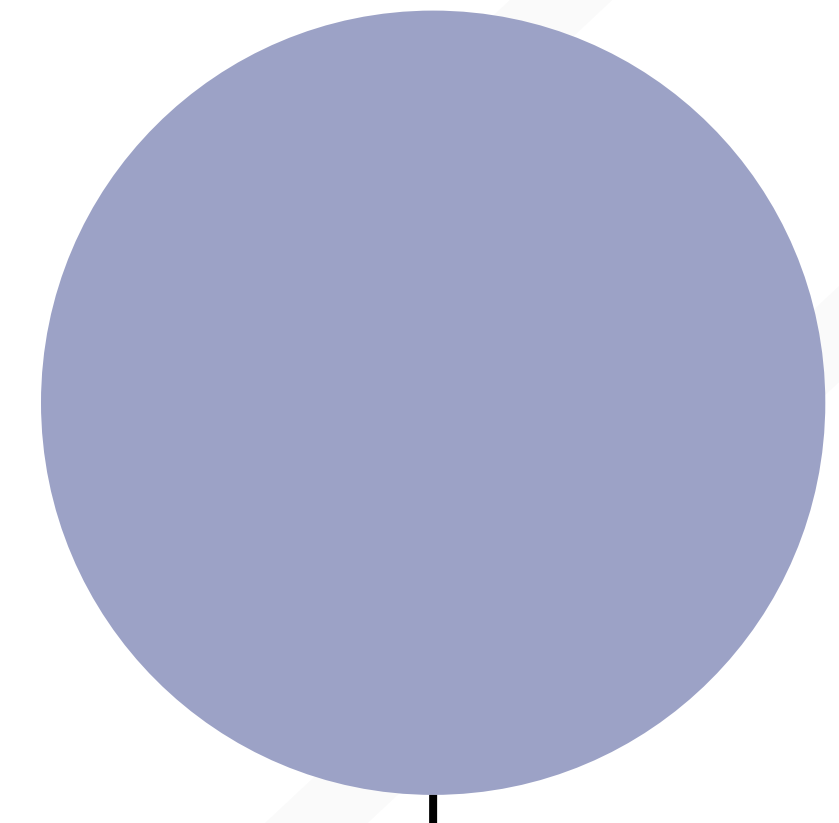
Field View is the next chapter in Minsterworth's journey to combining the area's rich and rural history with the latest thriving cosmopolitan offerings.

Steeped in a wealth of history and natural beauty, Minsterworth's latest development is nestled between stunning countryside views, highly accelaied independant amenities and the metropolitan city of Gloucester.

The village itself remains a quaint and peaceful image on the surface whilst providing a variety of unique and in-demand delights including the phenomenal Severn and Wye Smokery and Restaurant, a local water ski club and much more.

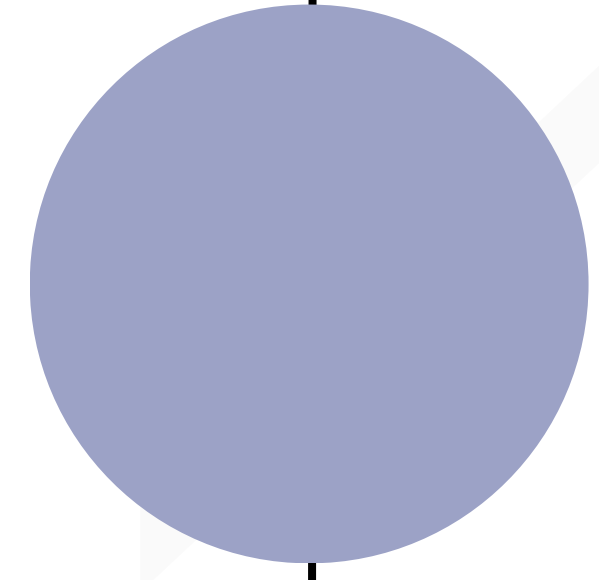


Well Connected



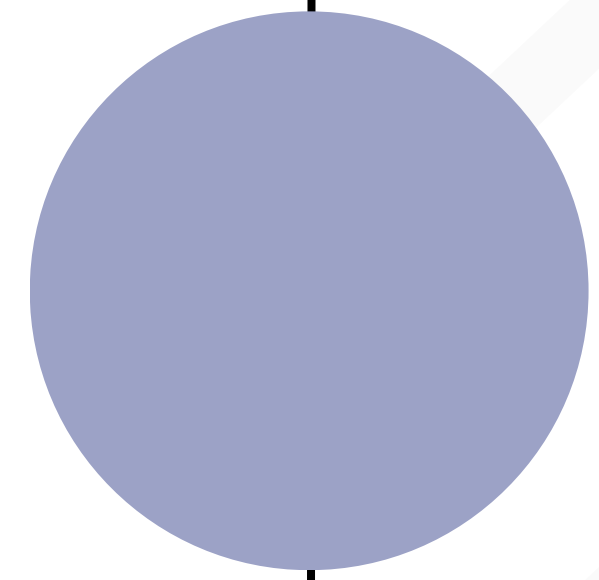
FIELD VIEW

Home



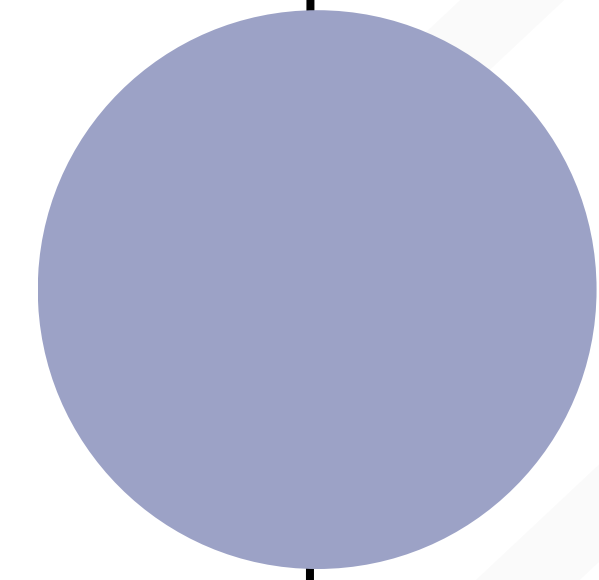
GLOUCESTER

5 miles



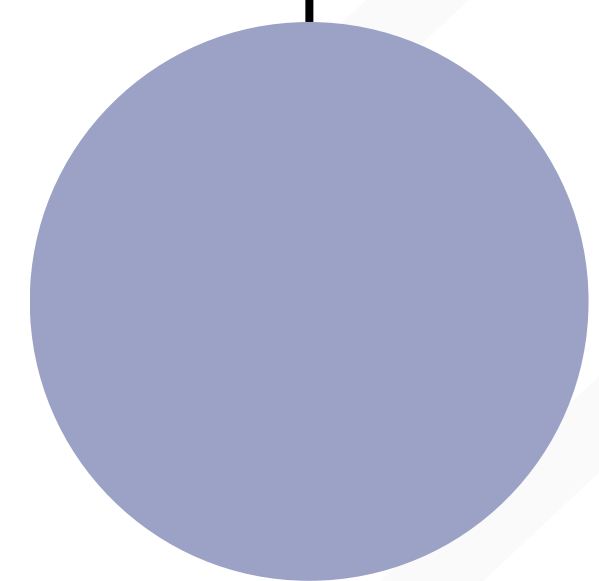
CHELTENHAM

12 miles



BRISTOL

38 miles



LONDON PADDINGTON

104 miles

Direct trains from Gloucester 2hrs 15mins



CONTACT OUR AGENTS
SARAH MCKINNON AND KATY REYNOLDS
FOR MORE INFORMATION



01242 246963

cheltenhamnewhomes@knightfrank.com



MH
MATFORD
HOMES