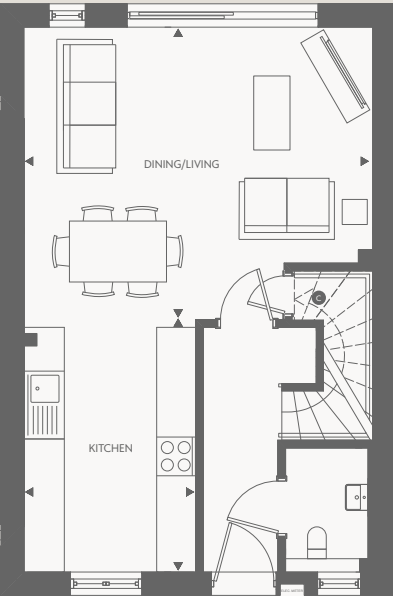


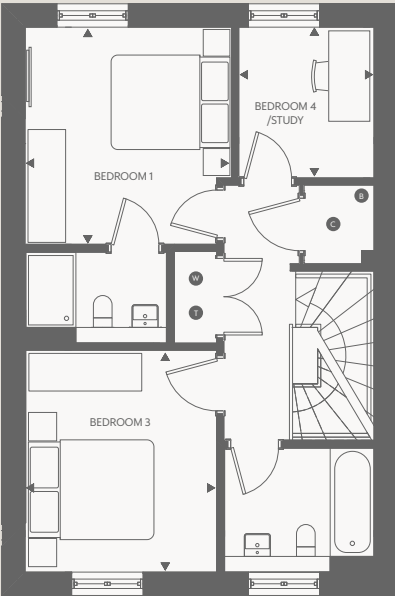
HOUSES 6 & 11

4 BEDROOMS



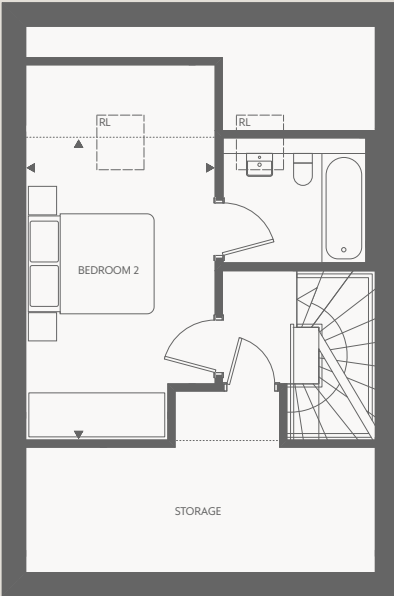
GROUND FLOOR

Kitchen		
4.0m x 2.7m	13' 1" x 8' 10"	
Dining/Living		
5.5m x 4.6m	18' 1" x 15' 1"	



FIRST FLOOR

Bedroom 1		
3.4m x 3.2m	11' 2" x 10' 6"	
Bedroom 3		
3.5m x 3.0m	11' 6" x 9' 10"	
Bedroom 4/Study		
2.4m x 2.1m	7' 10" x 6' 11"	



SECOND FLOOR

Bedroom 2		
4.8m x 3.0m	15' 9" x 9' 10"	

W Washing machine space   B Boiler   C Cupboard   T Tumble dryer   .....Sloped ceiling   — Rooflight   ►◄ Measuring points

\*Please note house 11 is handed. See Sales Advisor for details. The above floor plan details are intended to give a general indication of the development and do not form part of any contract. Acorn Property Group reserves the right to alter any part of the development, specification or floor layout at any time. The dimensions are maximum and approximate and may vary based on the internal finish. Dimensions are to the widest part of each room scaled down from architects plans. Furniture measurements should only be taken from the completed property. These details are believed to be correct but neither the agent nor Acorn Property Group accept the liability whatsoever for any misrepresentation made either in these details or orally. Furniture is shown for indicative purposes only. Fitted wardrobes and washing machines are not included. April 2025.