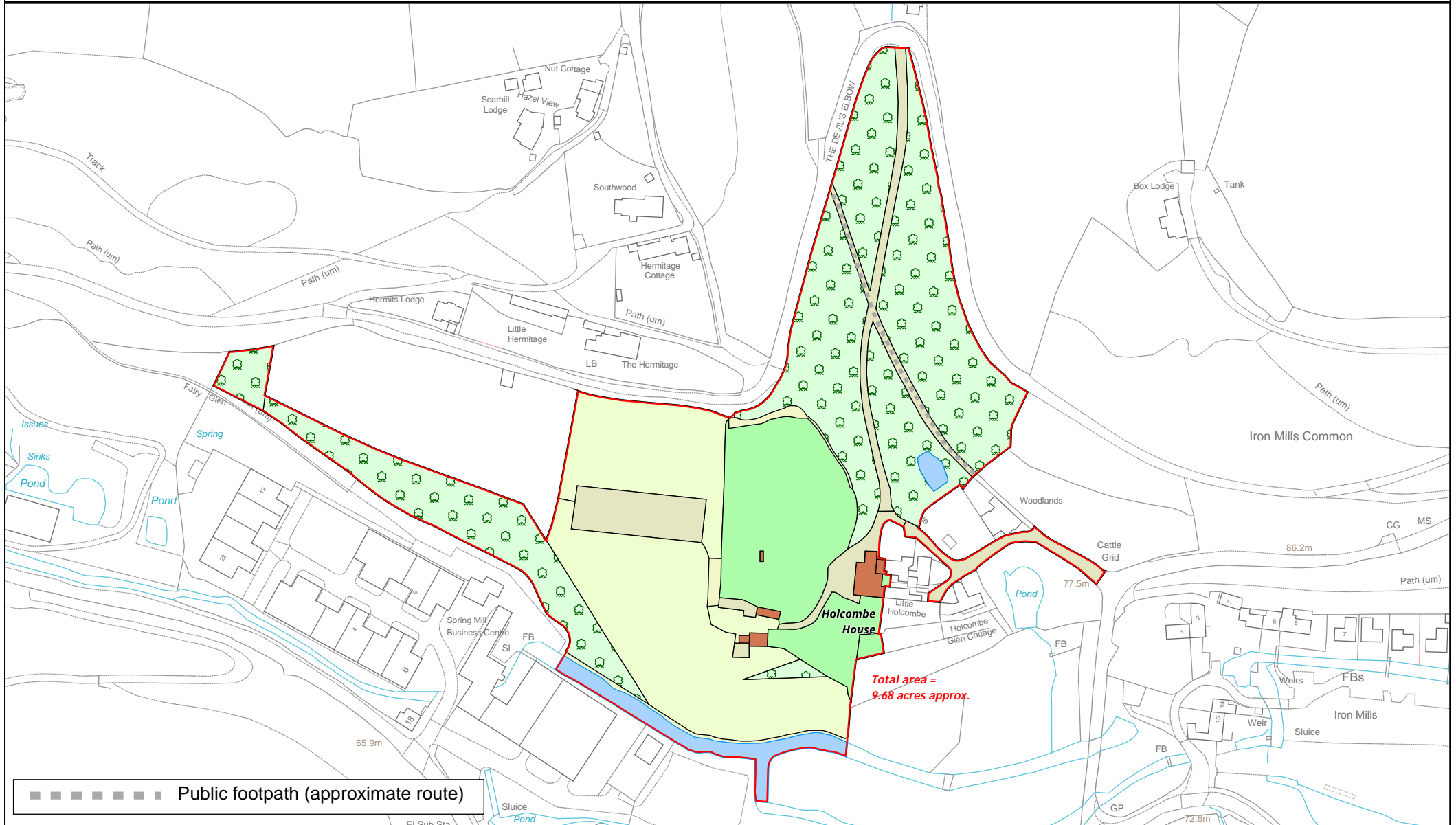
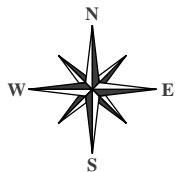


# Holcombe House



LDS Ltd  
Plan Preparation  
Unit 15, Glenmore Business Park  
Telford Road  
Salisbury SP2 7GL

(e) [planprep@lds-survey.co.uk](mailto:planprep@lds-survey.co.uk)



Date: 14:05:25  
Drawn By: CW  
Scale: 1:2400 @ A4  
Plan Ref: 20208

Title  
**Holcombe House**

This Plan is published for guidance only, and although it is believed to be correct its accuracy is not guaranteed, nor is it intended to form part of any contract. ©Crown copyright and database rights 2025. Licence No. AC000818786