


Foxley Barn

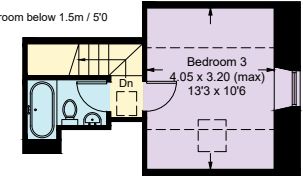
Approximate Gross Internal Area = 329.3 sq m / 3544 sq ft

Outbuildings = 37.0 sq m / 398 sq ft

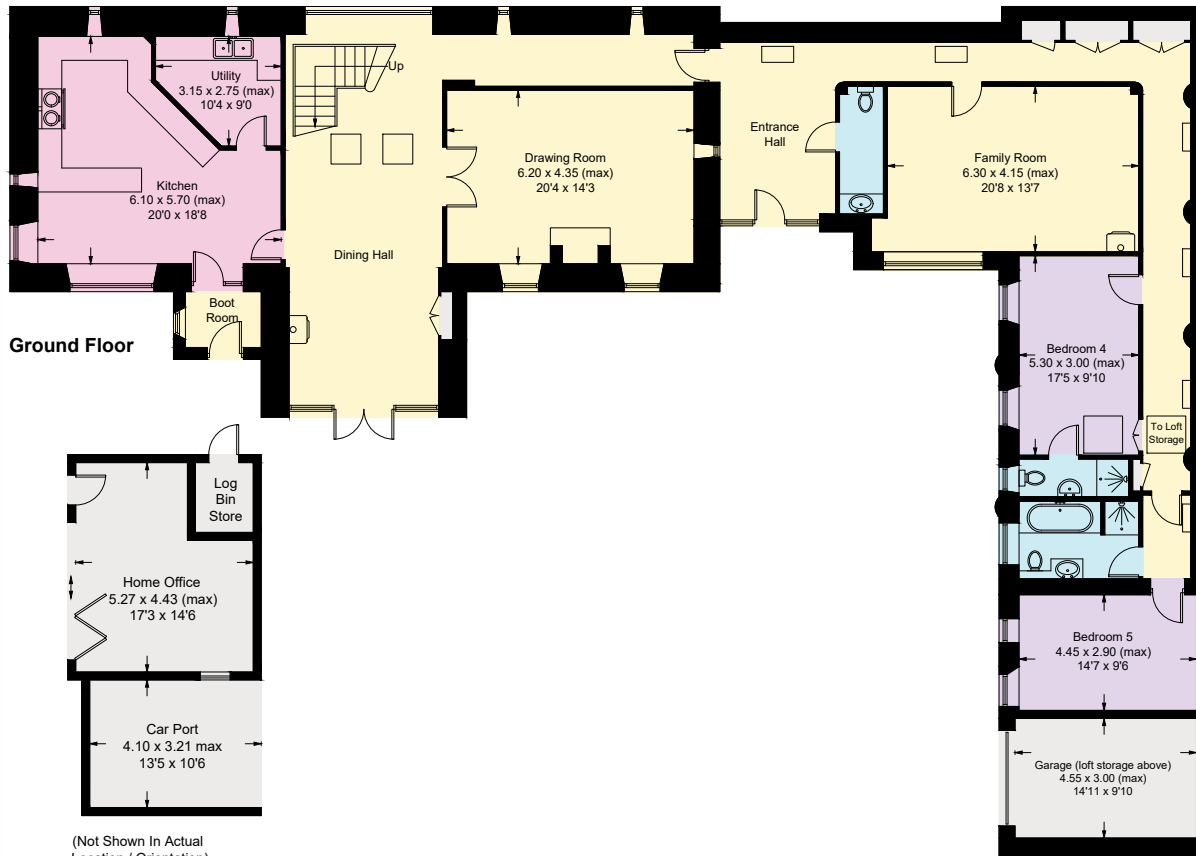
Total = 366.3 sq m / 3942 sq ft

(Including Garage / Excluding Void / Car Port)

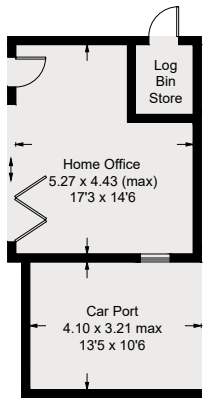
 = Reduced headroom below 1.5m / 5'0"



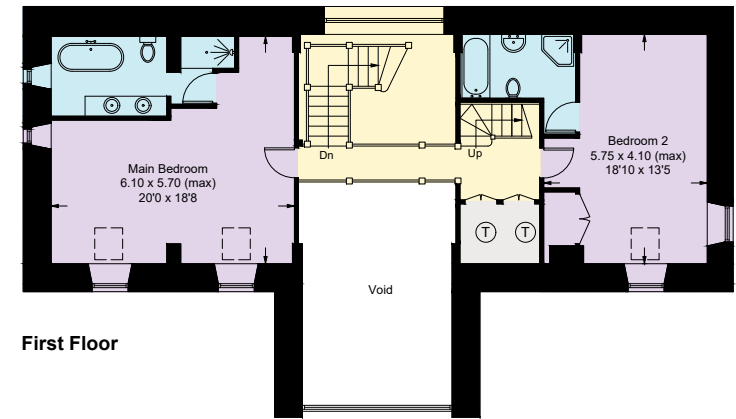
Second Floor



Ground Floor



(Not Shown In Actual Location / Orientation)



First Floor

Illustration for identification purposes only, measurements are approximate, not to scale. floorplansUsketch.com © (ID1095320)