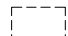
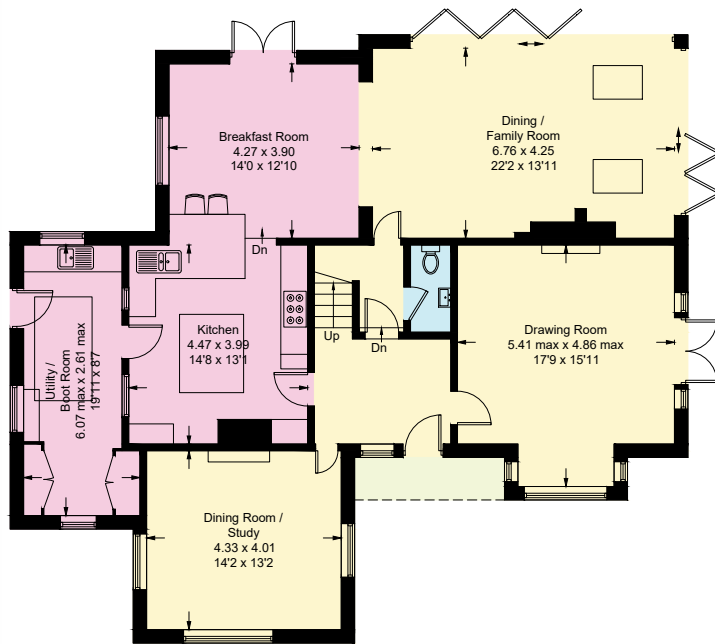


Meadway House

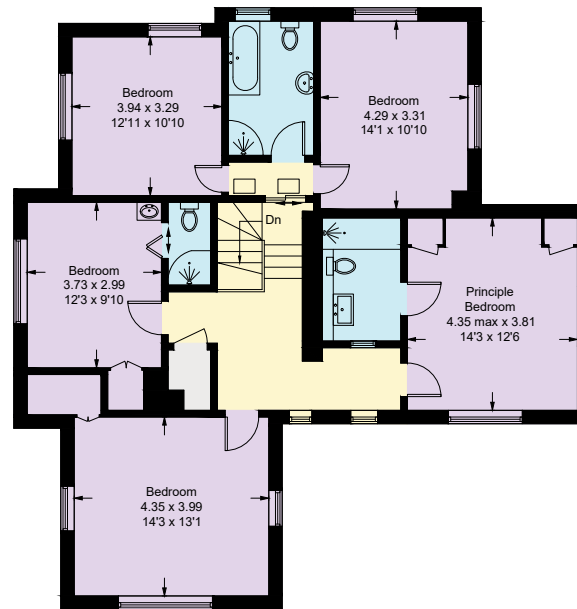
Approximate Gross Internal Area = 248.7 sq m / 2677 sq ft
 Outbuildings = 114.0 sq m / 1227 sq ft
 Total = 362.7 sq m / 3904 sq ft
 (Including Garages)



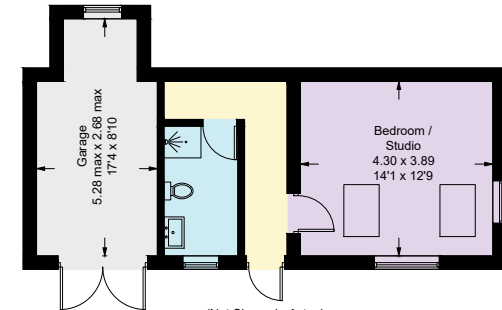
 = Reduced headroom below 1.5m / 5'0"



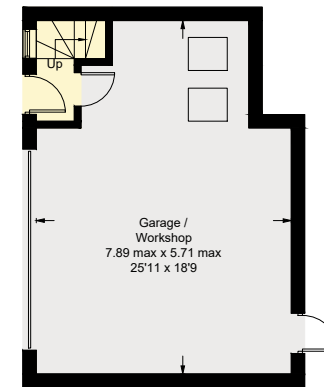
Ground Floor



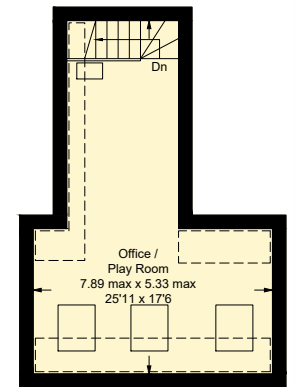
First Floor



(Not Shown In Actual Location / Orientation)



Garage - Ground Floor



Garage - First Floor

(Not Shown In Actual Location / Orientation)

Illustration for identification purposes only,
 measurements are approximate, not to scale. (ID1180762)