

Moreleaze Farm

Minety, Malmesbury

Gross Internal Area (Approx.)

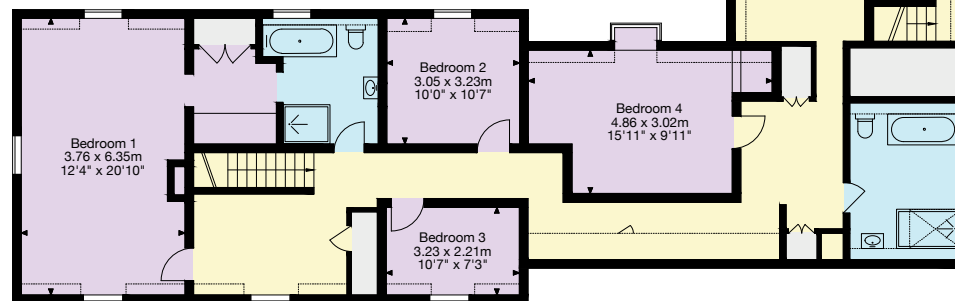
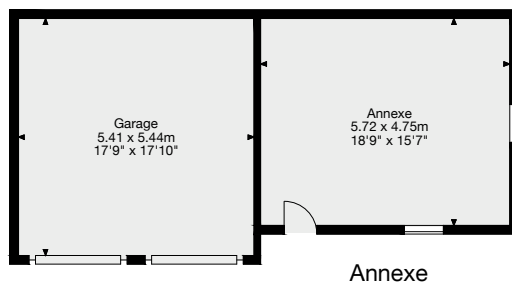
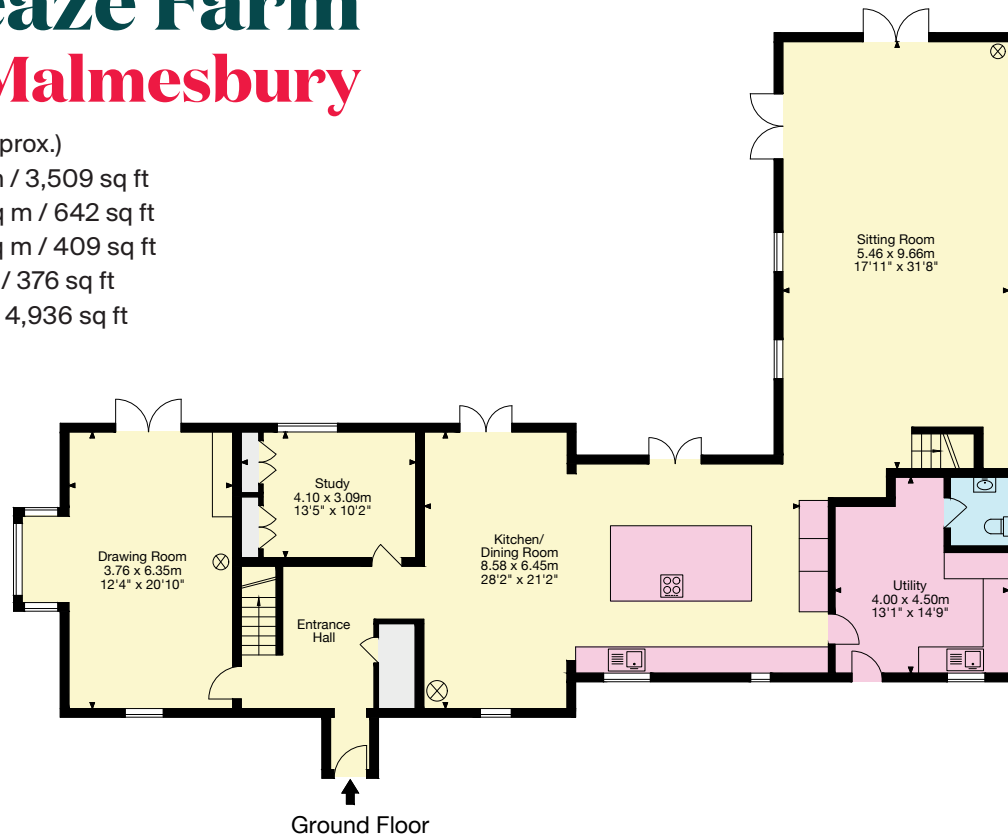
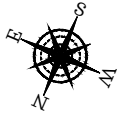
Main House = 326 sq m / 3,509 sq ft

Garage/Annexe = 59 sq m / 642 sq ft

Summer House = 38 sq m / 409 sq ft

Stable Block = 35 sq m / 376 sq ft

Total Area = 458 sq m / 4,936 sq ft



- Living Area/Reception
- Kitchen/Utility
- Bedroom/Dressing Room
- Bathroom/WC
- Vaults/Storage
- Terrace/Outside Space

Important Notice: This plan is not to scale (unless specified), is for guidance only and must not be relied upon as a statement of fact. All measurements and areas are approximate only (and have been prepared in accordance with the current edition of the RICS Code of Measuring Practice). Please read the Important Notice on the last page of text of the particulars. © Capture Property Marketing 2025.

01285 659 771

One Market Place,
Cirencester GL7 2PE
cirencester@knightfrank.com