

Bridgefield, Toft Road, Kingston, Cambridge

---





A luxurious seven bedroom home with an indoor pool, tennis court, and stunning south-facing gardens, surrounded by woodlands and countryside offering privacy and tranquillity.

### Summary of accommodation

#### Main House

Entrance hall | Playroom | Sitting room | Drawing room  
Family/dining room | Study | Kitchen/breakfast room | Pantry  
Conservatory | Utility Room | Home Office | Boot Room  
Shower Room | Two Cloakrooms | Swimming pool | Garage  
  
Principal bedroom with ensuite bathroom, dressing room,  
and balcony | Five guest bedrooms with ensuite bathrooms  
One further bedroom | One further bathroom  
  
Loft room | Store room

#### The Barn

Entrance hall | Kitchen/dining room | Pantry | Sitting room  
Utility room | Cloakroom  
  
Three bedrooms | One bathroom and two bath/shower  
rooms | Snug | Study

#### Garden and Grounds

Landscaped gardens | Large terrace to the rear of the house  
Tennis court | Summer house/gym | Ornamental pond  
  
**In all about 6.5 acres**



Cambridge  
Nine Hills Road  
Cambridge  
CB2 1GE  
[knightfrank.co.uk](https://www.knightfrank.co.uk)

Paddy Pritchard-Gordon  
01223 972910  
[paddy.pritchard-gordon@knightfrank.com](mailto:paddy.pritchard-gordon@knightfrank.com)

Country Department  
55 Baker Street  
London  
W1U 8AN  
[knightfrank.co.uk](https://www.knightfrank.co.uk)

Edward Welton  
020 7861 1114  
[edward.welton@knightfrank.com](mailto:edward.welton@knightfrank.com)

## Situation

Bridgefield is conveniently situated on the outskirts of Kingston between Kingston and Toft, approximately 6 miles west of Cambridge. The property offers easy access to the A428, A603 and M11, making it well-connected to major routes.

The nearby village of Toft provides local facilities including a post office/shop, village hall, recreation ground, and church. The next village, Comberton, offers further amenities such as a primary school, doctor's surgery, public house, and Comberton Village College - a highly acclaimed school for secondary and higher education. Golfing enthusiasts can enjoy Bourn Golf/Leisure Club, and indoor sports facilities are available at Comberton Village College.

The University City of Cambridge, a center of high-tech industry, is within easy reach, offering access to internationally renowned science parks, university research and development laboratories, and Addenbrooke's Hospital/Biomedical Campus. The south and west sides of the city offer an excellent choice of independent schools.

Bridgefield is also well-connected to London, with the M11 (junction 12) within approximately 5 miles, and Royston Station 12 miles away. Stansted Airport is also easily accessible via the M11.

## Distances

Cambridge 7.7 miles (London King's Cross from 48 minutes), Royston Station 12 miles (London King's Cross from 37 minutes), M11 Junction 12 5 miles, London Stansted Airport 32.5 miles.  
(Distances and times approximate)



## Bridgefield

This stunning seven bedroom residence boasts a range of luxurious features, including an indoor swimming pool, tennis court, and beautifully manicured gardens. The high ceilings and well-proportioned rooms throughout add to the grandeur of the property.

The double height entrance hall provides a grand entrance that leads to a superb open plan family/dining room with a solid mahogany floor. The bespoke kitchen/breakfast room features granite work surfaces and integrated appliances, making it a great place to cook and entertain guests. The double-glazed conservatory is the perfect spot to relax and enjoy the tranquility of the garden.

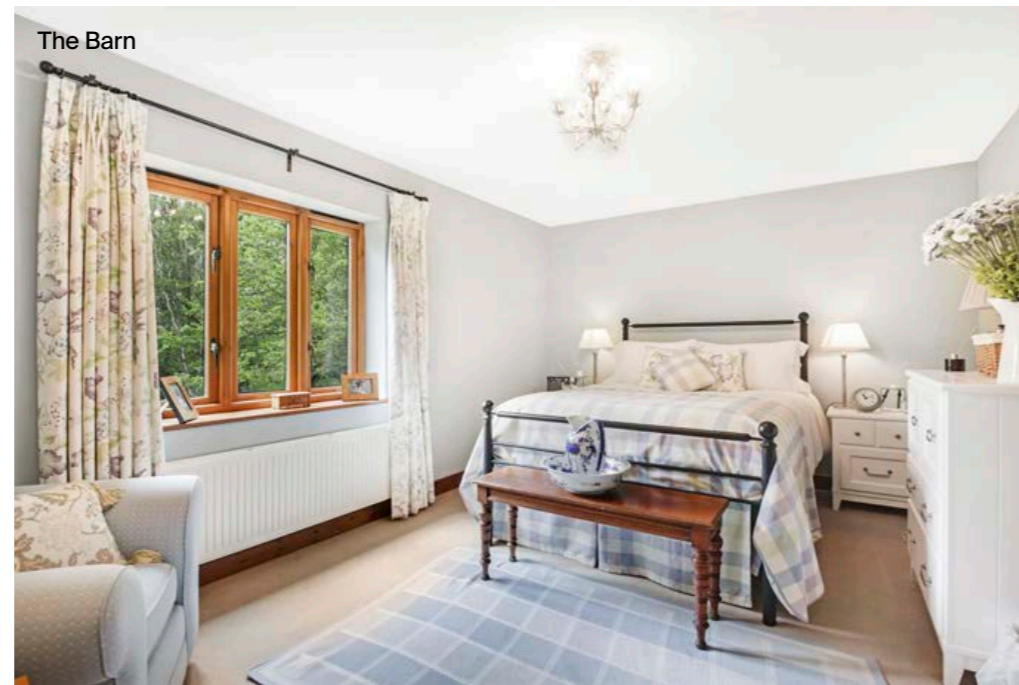
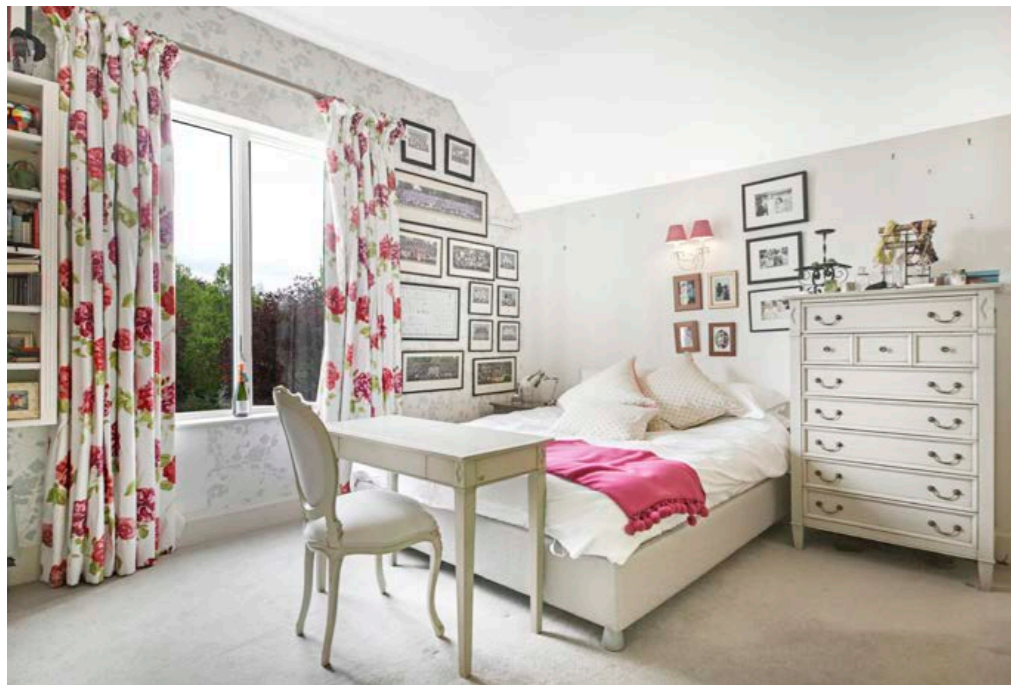
The principal bedroom is equally impressive, with French doors that lead to a south facing balcony, dressing room, and en suite bathroom.

In addition to the main house, the property also includes a stunning three bedroom timber-clad barn built using reclaimed timbers. This independent dwelling has well-proportioned accommodation arranged over three floors, with separate utility services and broadband.

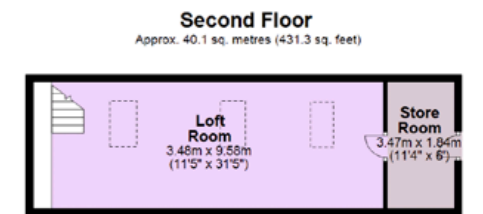
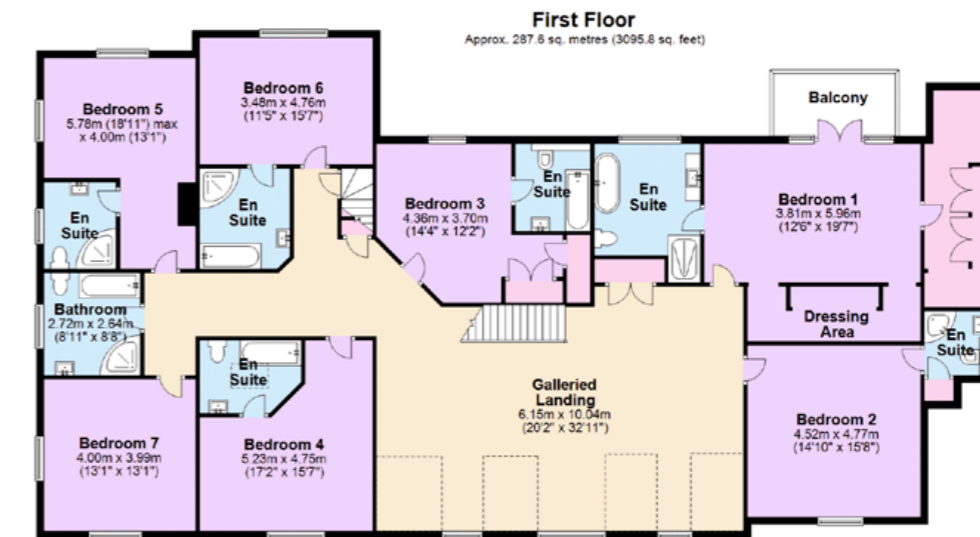
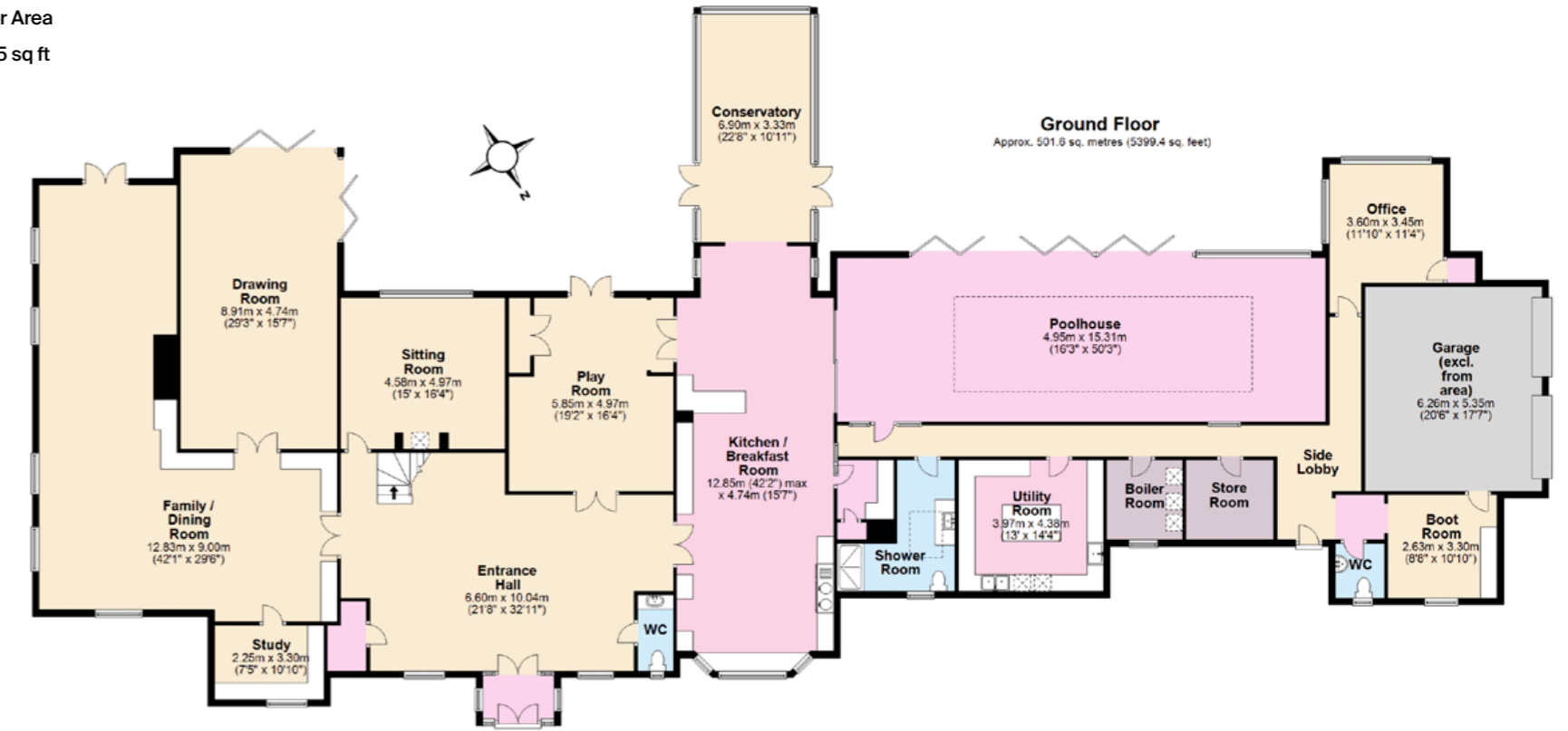
A long gravel driveway leads to a double car port, providing ample space for parking. Whether you're looking for a versatile family home or an entertainer's paradise, Bridgefield is the perfect property that offers luxurious living in a beautiful setting.







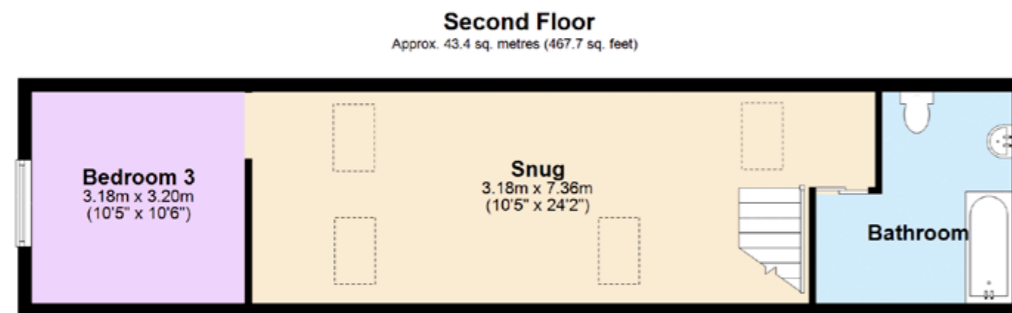
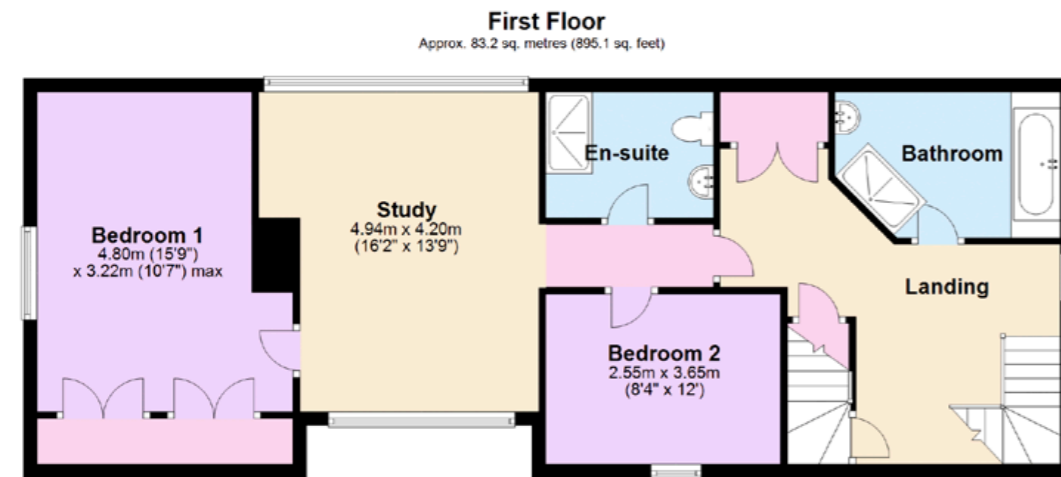
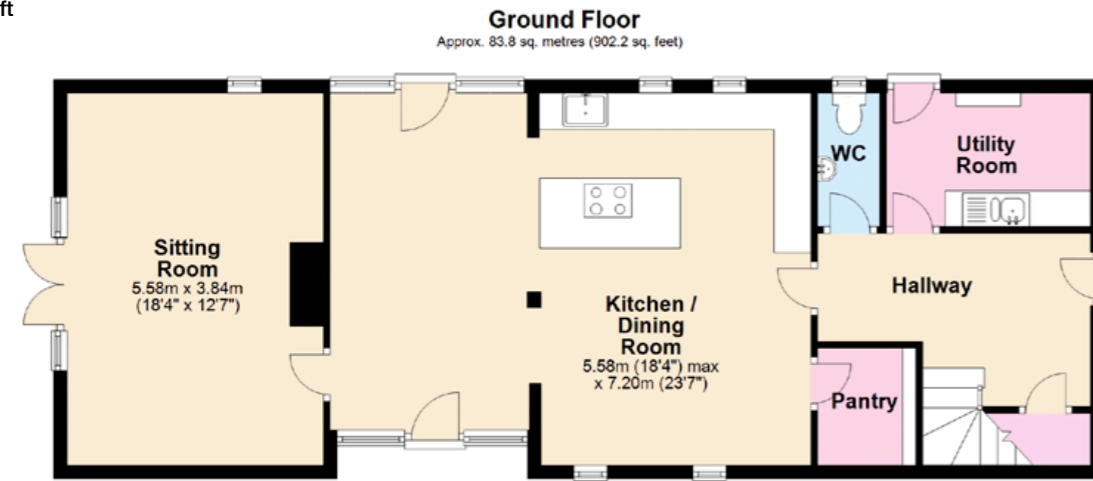
Approximate Gross Internal Floor Area  
Main House: 829.3 sq m / 8,926.5 sq ft



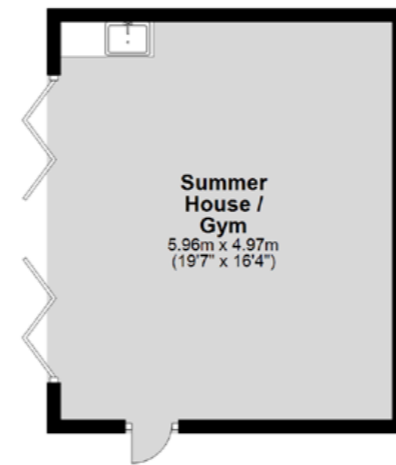
This plan is for guidance only and must not be relied upon as a statement of fact. Attention is drawn to the important notice on the last page of the text of the Particulars.

Approximate Gross Internal Floor Area

The Barn: 240.1 sq m / 2583.9 sq ft



**Studio**  
Approx. 29.6 sq. metres (318.8 sq. feet)



## Garden and Grounds

The property has magnificent south-facing gardens that have been beautifully landscaped, complete with a tennis court. The grounds are nestled amidst woodlands and surrounded by stunning countryside views, ensuring complete privacy.

The property is entered through double electric gates that lead to a long gravel driveway, which splits into three, providing independent access to the main house, barn, and summer house/gym. In front of the property there is a large ornamental pond surrounded by a lovely rockery and a flowing waterfall. The expansive gardens and grounds

are professionally landscaped and feature a vast lawn area, raised flower beds and are well-screened with mature trees, shrubs, and woodland areas.

Additionally, the property has a large paved terrace that's ideal for outdoor dining and entertaining, adjacent to the rear elevation. Further, you'll find the summer house/gym next to the barn, as well as access to the house through the integral garage.



## Property information

**Tenure:** Freehold

**Services:** Mains water and electricity  
Private sewage treatment system (Klargester)  
Oil fired central heating

**Local authority:** South Cambridgeshire District Council

**Council Tax Band:**  
Bridgefield - Band H  
The Barn - Band A

**Energy Performance Certificate Rating:**  
Bridgefield - Rating D  
The Barn - Rating D

**Postcode:** CB23 2NS

## Viewings

All viewings strictly by appointment only through the vendor's sole selling agents, Knight Frank LLP.

Fixtures and fittings: A list of the fitted carpets, curtains, light fittings and other items fixed to the property which are included in the sale (or may be available by separate negotiation) will be provided by the Seller's Solicitors.

Important Notice: 1. Particulars: These particulars are not an offer or contract, nor part of one. You should not rely on statements by Knight Frank LLP in the particulars or by word of mouth or in writing ("information") as being factually accurate about the property, its condition or its value. Neither Knight Frank LLP nor any joint agent has any authority to make any representations about the property, and accordingly any information given is entirely without responsibility on the part of the agents, seller(s) or lessor(s). 2. Photos, Videos etc: The photographs, property videos and virtual viewings etc. show only certain parts of the property as they appeared at the time they were taken. Areas, measurements and distances given are approximate only. 3. Regulations etc: Any reference to alterations to, or use of, any part of the property does not mean that any necessary planning, building regulations or other consent has been obtained. A buyer or lessee must find out by inspection or in other ways that these matters have been properly dealt with and that all information is correct. 4. VAT: The VAT position relating to the property may change without notice. 5. To find out how we process Personal Data, please refer to our Group Privacy Statement and other notices at <https://www.knightfrank.com/legals/privacy-statement>. Particulars dated June 2023. Photographs and videos dated May 2023.

All information is correct at the time of going to print. Knight Frank is the trading name of Knight Frank LLP. Knight Frank LLP is a limited liability partnership registered in England and Wales with registered number OC305934. Our registered office is at 55 Baker Street, London W1U 8AN. We use the term 'partner' to refer to a member of Knight Frank LLP or an employee or consultant. A list of members names of Knight Frank LLP may be inspected at our registered office. If you do not want us to contact you further about our services then please contact us by either calling 020 3544 0692, email to [marketing.help@knightfrank.com](mailto:marketing.help@knightfrank.com) or post to our UK Residential Marketing Manager at our registered office (above) providing your name and address.





