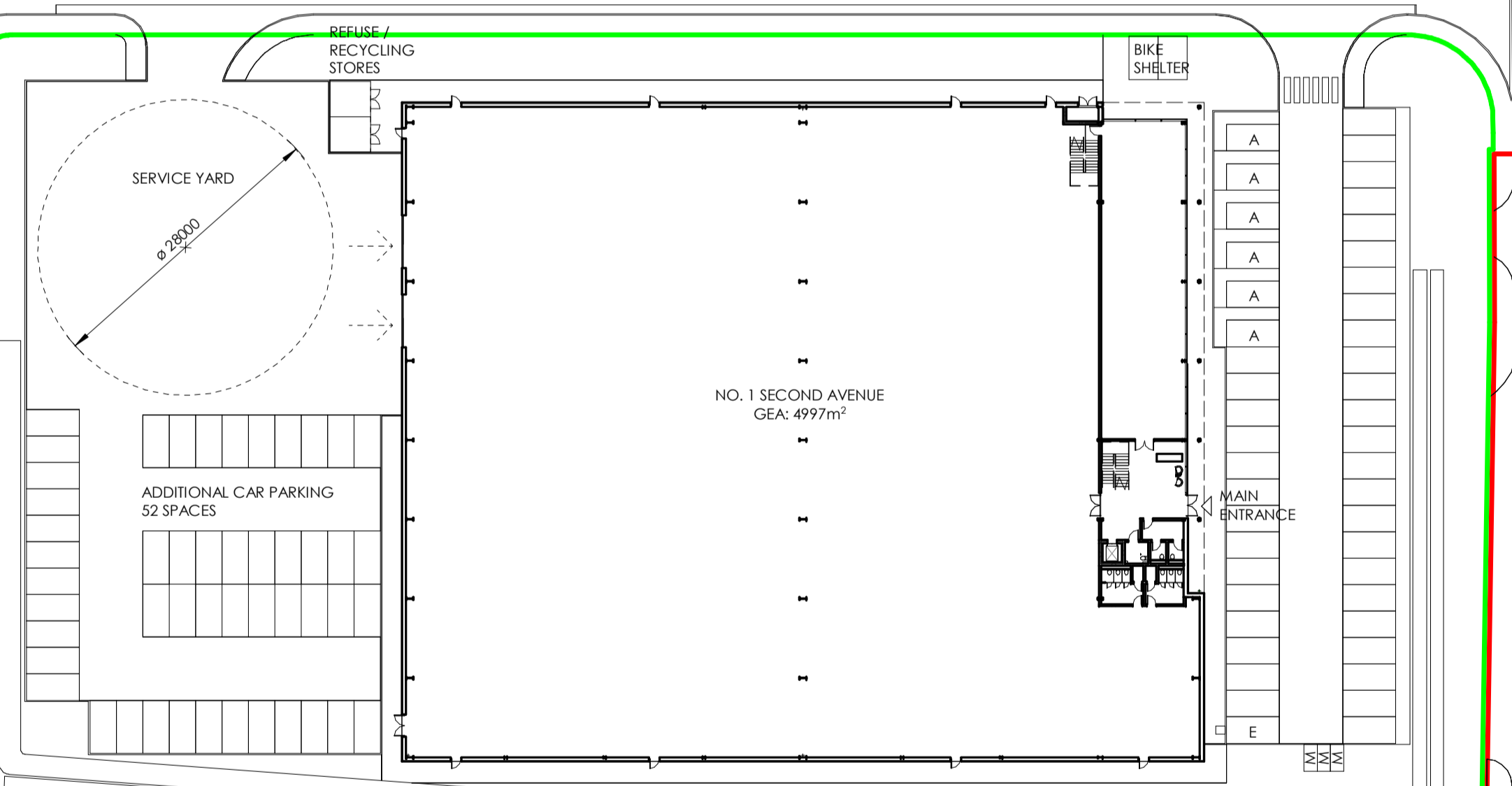


KINGSWAY NORTH

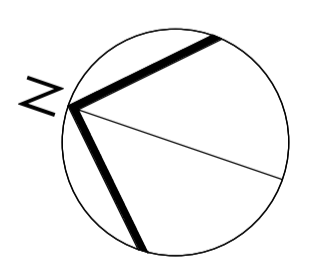
LOBLEY HILL ROAD

SECOND AVENUE

TOTAL PARKING PROVISION NO.1 SECOND AVENUE:
 - 97 TOTAL SPACES INCLUDING:
 - 6 ACCESSIBLE CAR SPACES (A)
 - 2 X BROXAP APOLLO COVERED BIKE SHELTERS WITH STAINLESS STEEL SHEFFIELD STYLE BIKE STANDS TO HOUSE 20 BIKES
 - 3 MOTORCYCLE SPACES (M)
 - 1 ELECTRIC VEHICLE CHARGING POINT (E)



- APPROVED PLANNING APPLICATION BOUNDARY (REF DC/15/01137/OUT)
- LAND IN APPLICANTS CONTROL
- OUTLINE APPLICATION BOUNDARY



NOTE: INTERNAL LAYOUT SHOWN FOR ILLUSTRATIVE PURPOSES ONLY



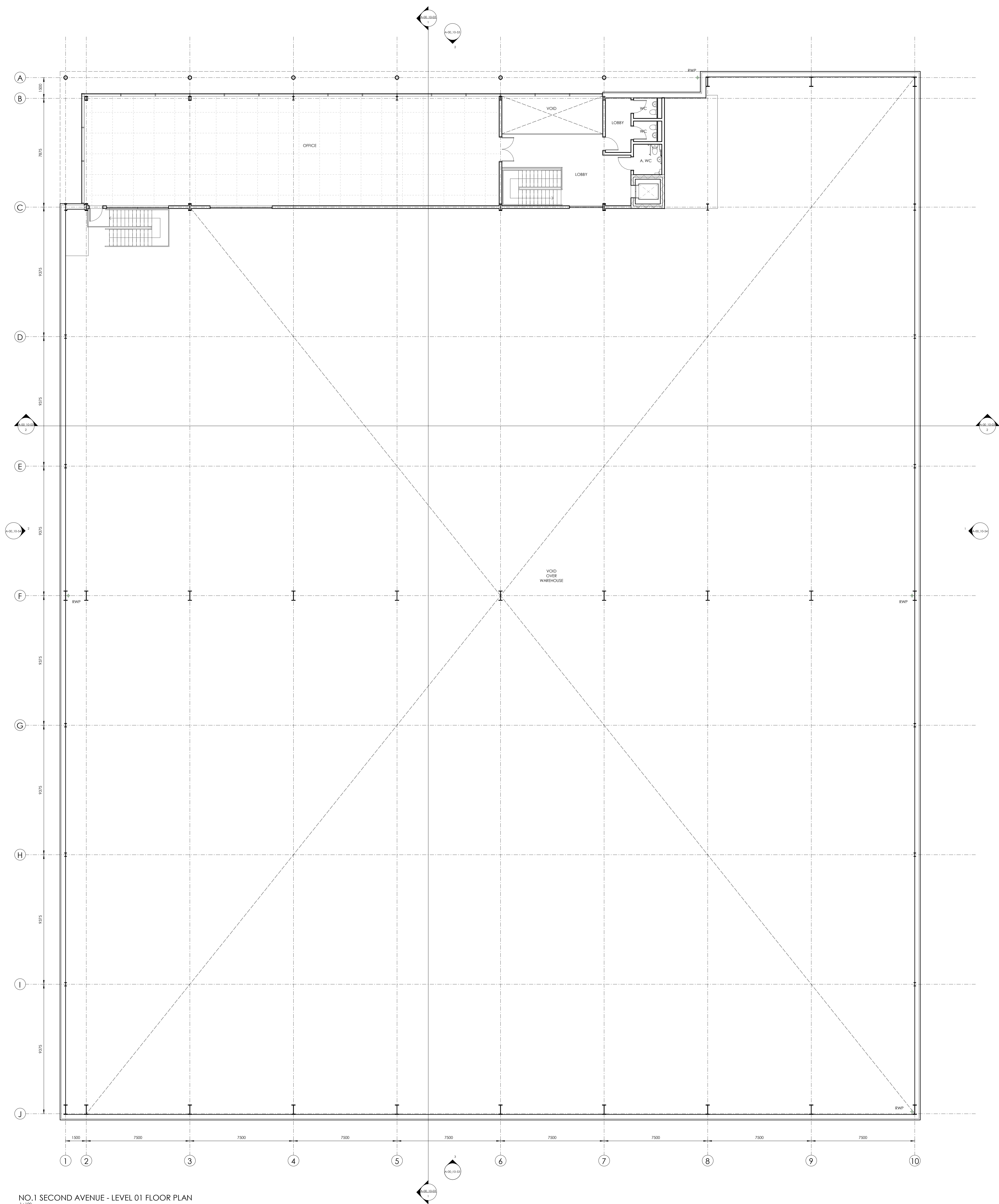
Rev	Date	Drawn By	Checked By
P1	11/07/2019	JL	GC
P2	19/11/2019	GC	RS
P3	28/11/2019	DSW	GC

Rev	Date	Drawn By	Checked By

Drawing Title: PLANNING Job Title: KINGSWAY NORTH Drawing Title: NO.1 SECOND AVENUE - PROPOSED SITE PLAN Date: 11.06.2019 Scale: As indicated	Job No: 3297 Drawing & Design Copyright of: FAULKNERBROWNS ARCHITECTS 	Drawing No: 3297-FBA-00-ZZ-DR-A-05_10-002 Rev: P3 © Drawing & Design Copyright of: FAULKNERBROWNS ARCHITECTS
---	---	--

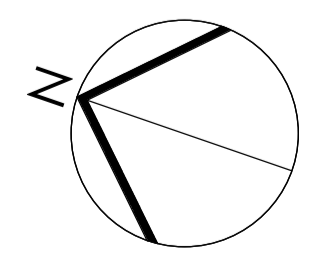
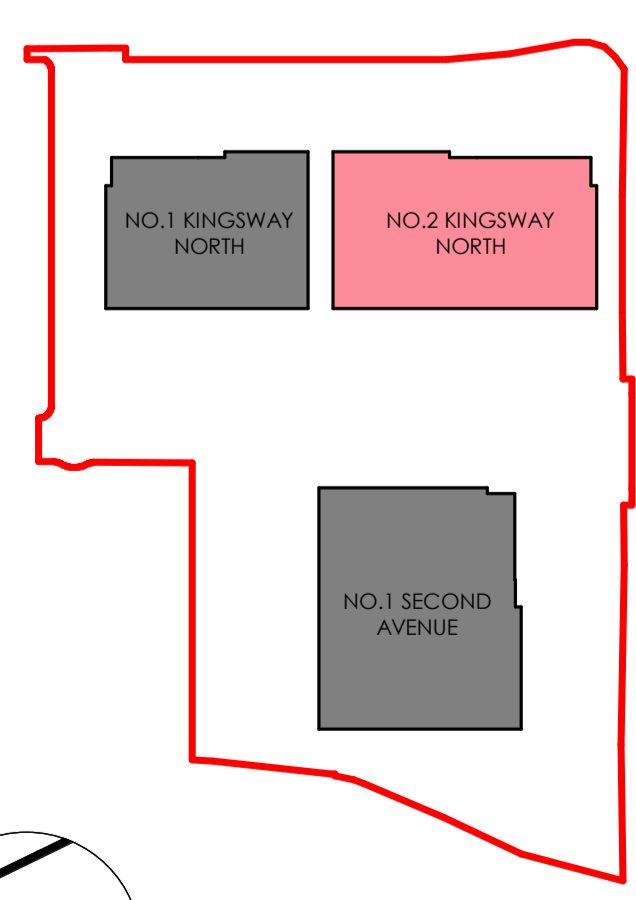
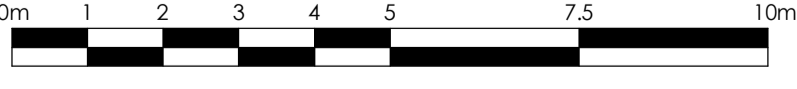
Do not scale this drawing
Do not derive dimensions from digital media

FaulknerBrowns LLP
 20 Stone House
 Northburn Way
 Kingsworth
 Newcastle upon Tyne
 NE12 6JW
 T: 44(0)191 2683007
 F: 44(0)191 2478132



NO.1 SECOND AVENUE - LEVEL 01 FLOOR PLAN
1:100

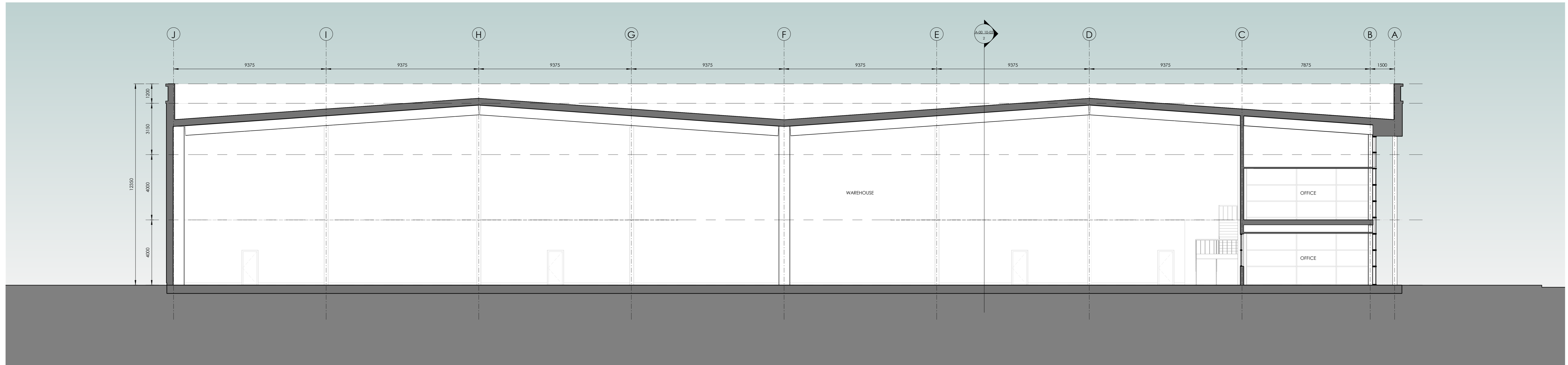
NOTE: INTERNAL LAYOUT SHOWN FOR ILLUSTRATIVE PURPOSES ONLY



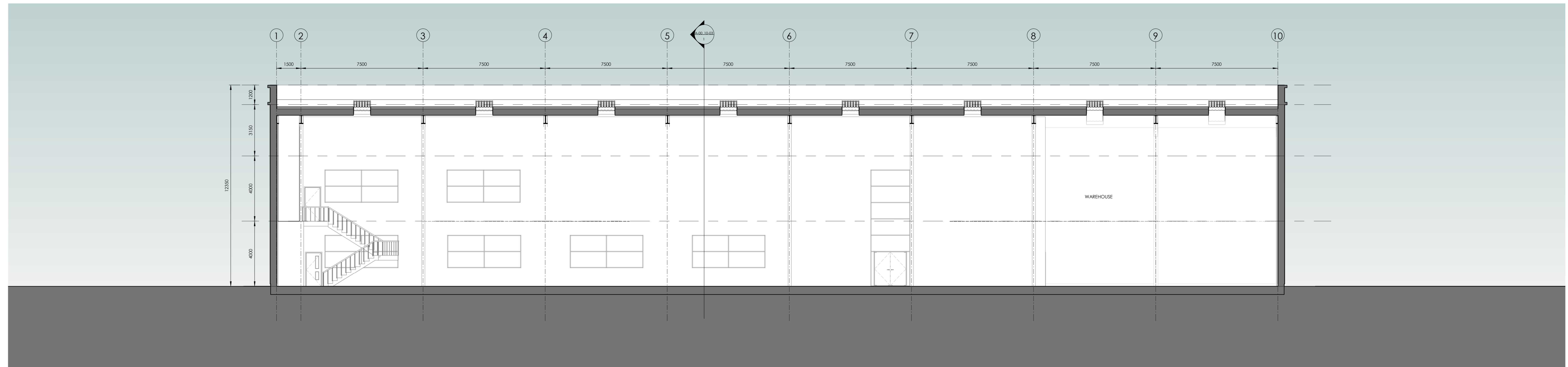
Rev	Date	Drawn By	Checked By	Rev	Date	Revision Notes	Drawn By	Checked By	Rev	Date	Revision Notes	Drawn By	Checked By	Rev	Date	Revision Notes
P1	11/07/2019	JL	GC			ISSUED FOR PRE-APP.	JL	GC				JL	GC			
P2	28/11/2019	DSW	GC			BUILDING AMENDED TO BE AS CONSENTED SCHEME. ISSUED FOR RESERVE MATTERS APPLICATION.	DSW	GC				DSW	GC			

Drawing Status:	PLANNING	Drawn No:	3297-FBA-03-01-DR-A-00_10-102
Job Title:	KINGSWAY NORTH	Job No:	3297
Drawing Title:	NO.1 SECOND AVENUE - PROPOSED LEVEL 01 FLOOR PLAN.	Drawn By:	JL
Date:	10.06.2019	Checked By:	GC
Scale:	As indicated		

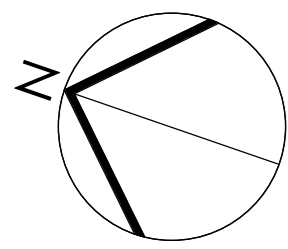
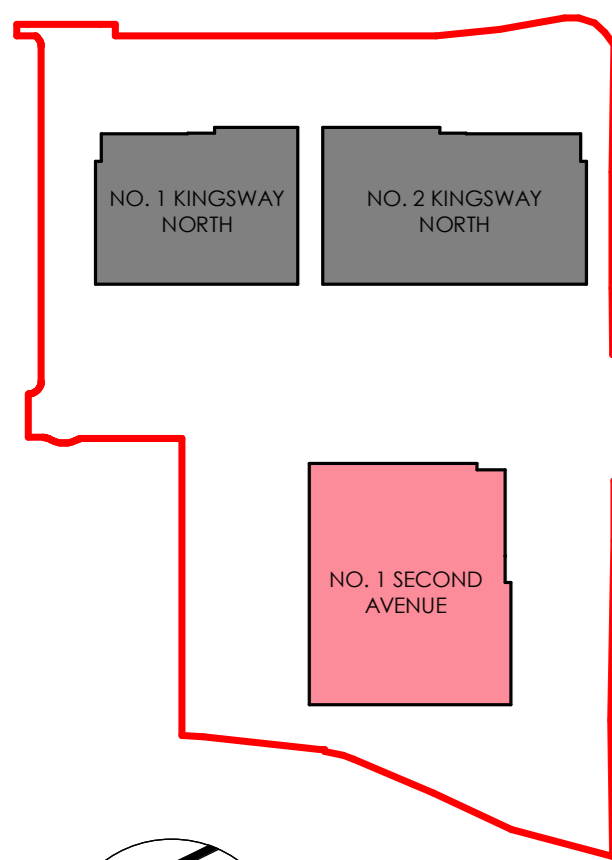
© Drawing & Design Copyright of:
FAULKNERBROWNS ARCHITECTS
 FaulknerBrowns LLP
 2100000000
 Northpoint Way
 Kingsway
 Newcastle
 NE1 2JF
 T: +44(0)191 2683007
 F: +44(0)191 2683212



NO.1 SECOND AVENUE - SECTION 1
1:100



NO.1 SECOND AVENUE - SECTION 2
1:100



NOTE: INTERNAL LAYOUT SHOWN FOR ILLUSTRATIVE PURPOSES ONLY



Rev	Date	Revision Notes	Drawn By	Checked By	Rev	Date	Revision Notes	Drawn By	Checked By	Rev	Date	Revision Notes	Drawn By	Checked By	Rev	Date	Revision Notes	Drawn By	Checked By	Rev	Date	Revision Notes	
PT	11/07/2019	ISSUED FOR PRE-APP	JL	GC																			
PI	28/11/2019	BUILDING AMENDED TO BE AS CONSENTED SCHEME. ISSUED FOR RESERVE MATTERS APPLICATION.	DSW	GC																			

Drawing Status:	PLANNING	Suitability:	3297-FBA-03-XX-DR-A-00_10-03	P2					
Job Title:	KINGSWAY NORTH	Job No.:	3297						
Drawing Title:	NO.1 SECOND AVENUE - PROPOSED SECTIONS								
Date:	10.04.2019	Scale:	AS Indicated	Drawn By:	JL	Checked By:	GC		

© Drawing & Design Copyright of:
FAULKNERBROWNS ARCHITECTS
 Faulkner Browns LLP
 25 Essex Road
 Newcastle Upon Tyne
 NE1 2JF UK
 T: +44(0)191 2488007
 E: info@fb.co.uk

