

ONE  
HUNDRED

ONE  
HUNDRED

**One Hundred is a one of Bristol's leading office redevelopments. Totalling 57,000 Sq Ft, this building offers the highest specification with market leading sustainability and wellbeing credentials.**



ONE  
HUNDRED

Whether you are looking to pick up a coffee, have a quick catch up with colleagues or need to burn some calories in a HIIT session the amenity rich space on the ground floor of One Hundred offers it all.



ONE  
HUNDRED

**7th Floor** 5,653 Sq Ft

**6th Floor** Let to  
RSA Insurance

**5th Floor** 7,755 Sq Ft

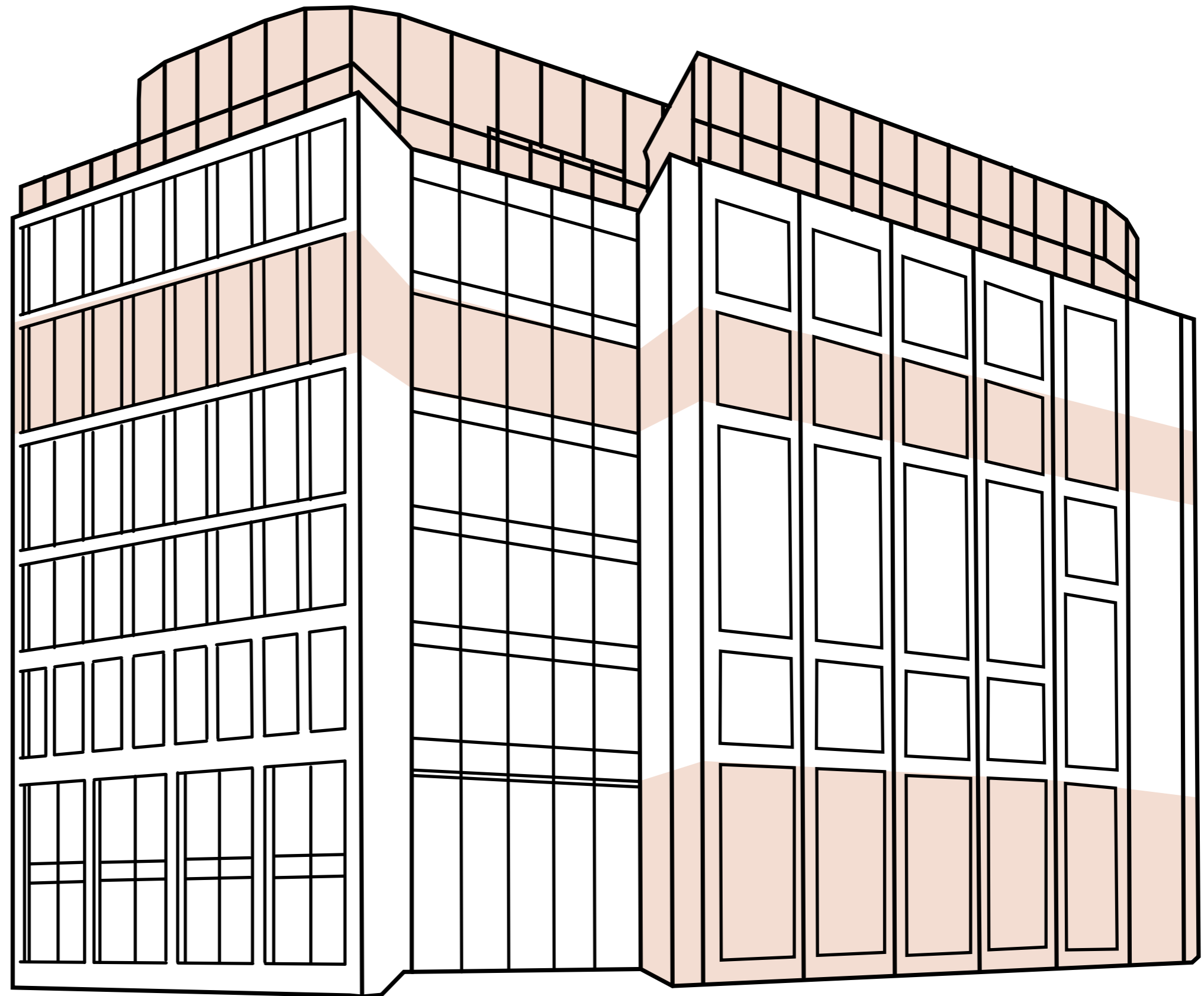
**4th Floor** Let to CACI

**3rd Floor** Let to  
Mott MacDonald

**2nd Floor** Let to  
Mott MacDonald

**1st Floor** Let to  
Mott MacDonald

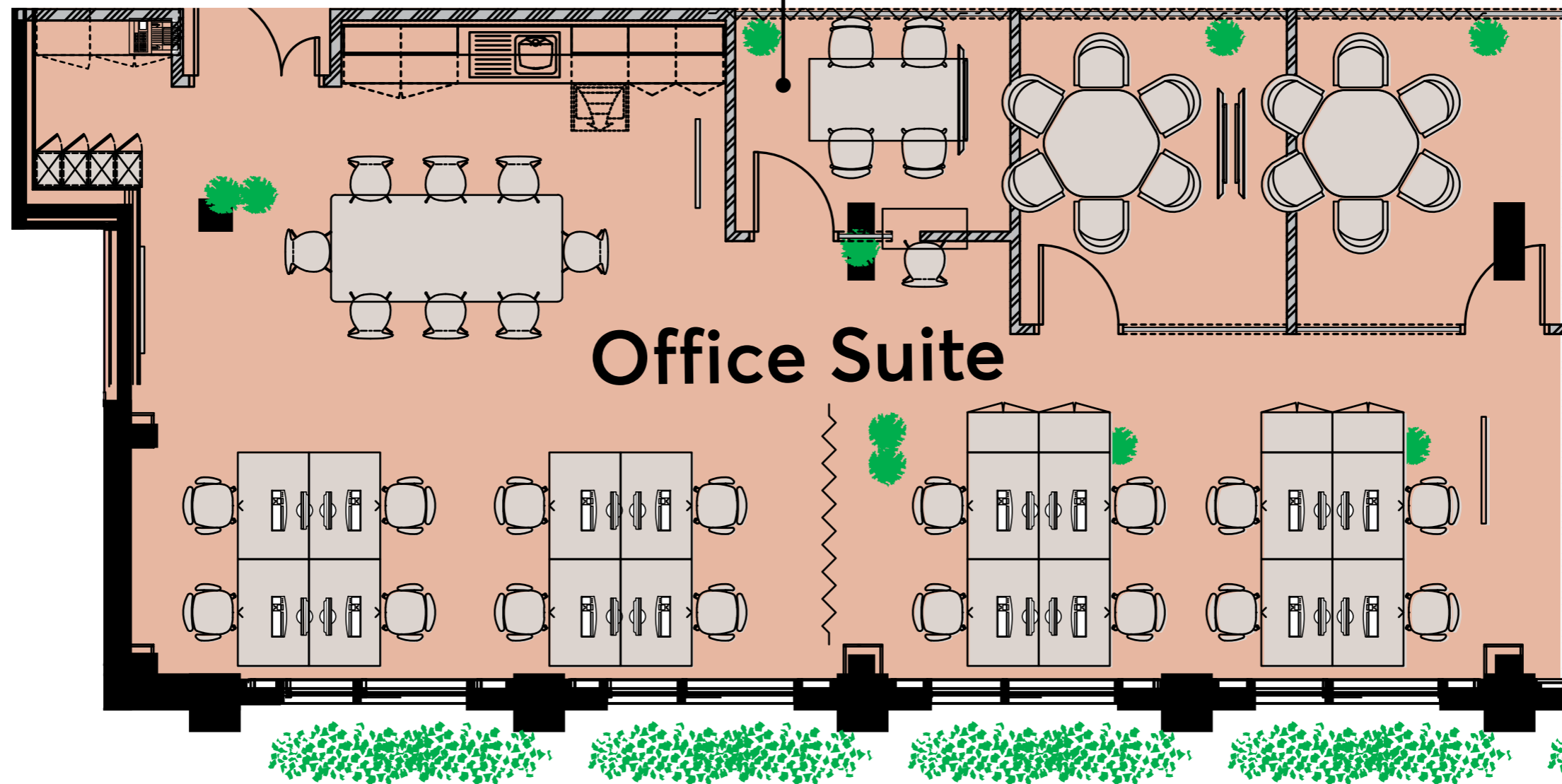
**Gnd Floor** 1,227 Sq Ft



# Ground Floor office suite 1,227 Sq Ft (113 Sq M)

## Office Space Planning:

6 person Meeting Room	2
4 person Zoom Room	1
Desks	16
Work Bench	1
Tea Point	8
Print Area	1
Comms Room	2



ONE  
HUNDRED

The ground floor offers an exceptional fully fitted office suite ready for immediate occupation.



16 desks



3 meeting rooms



Tea point/  
break out area

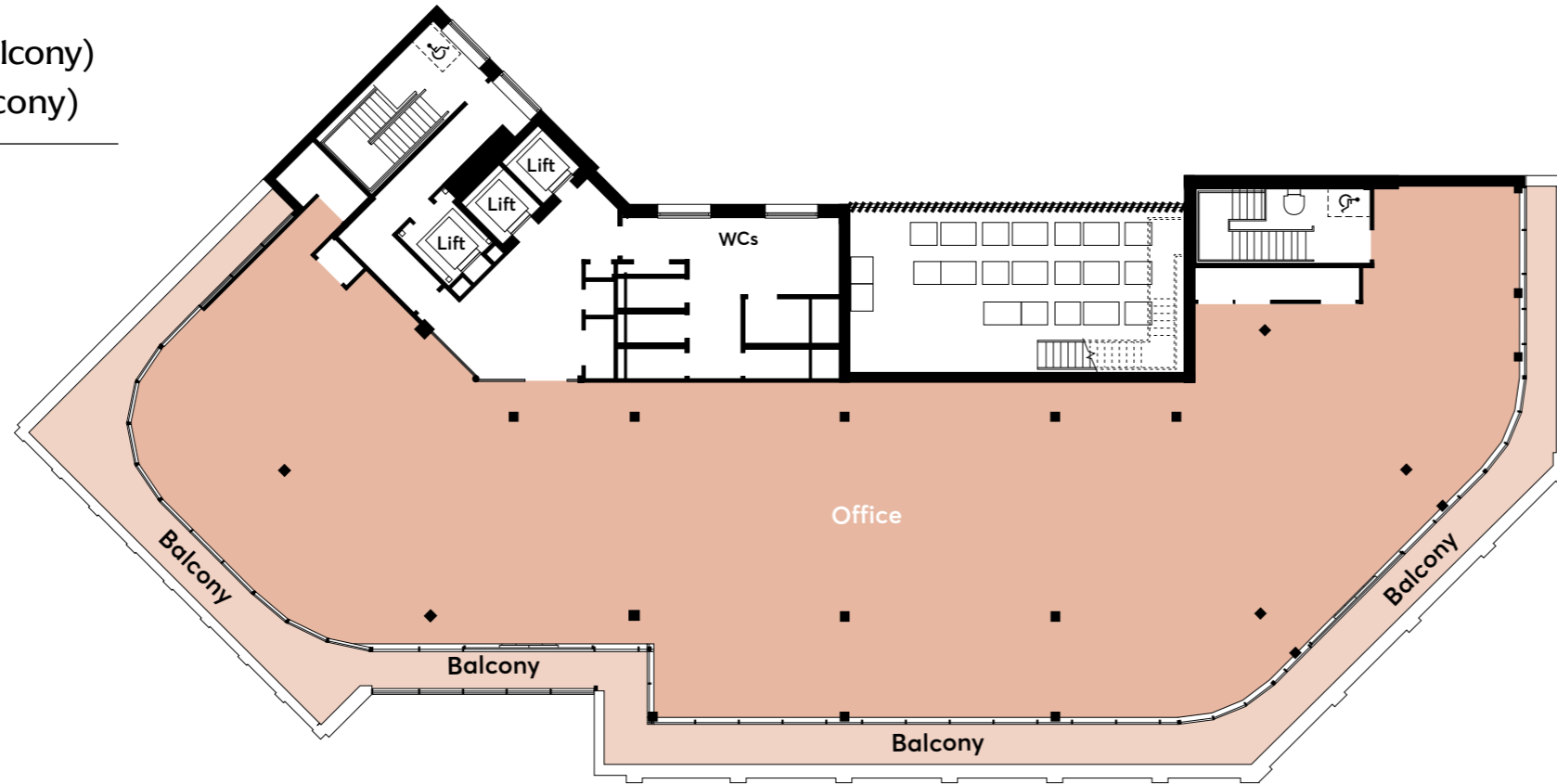


Ground Floor office suite

## 7th Floor

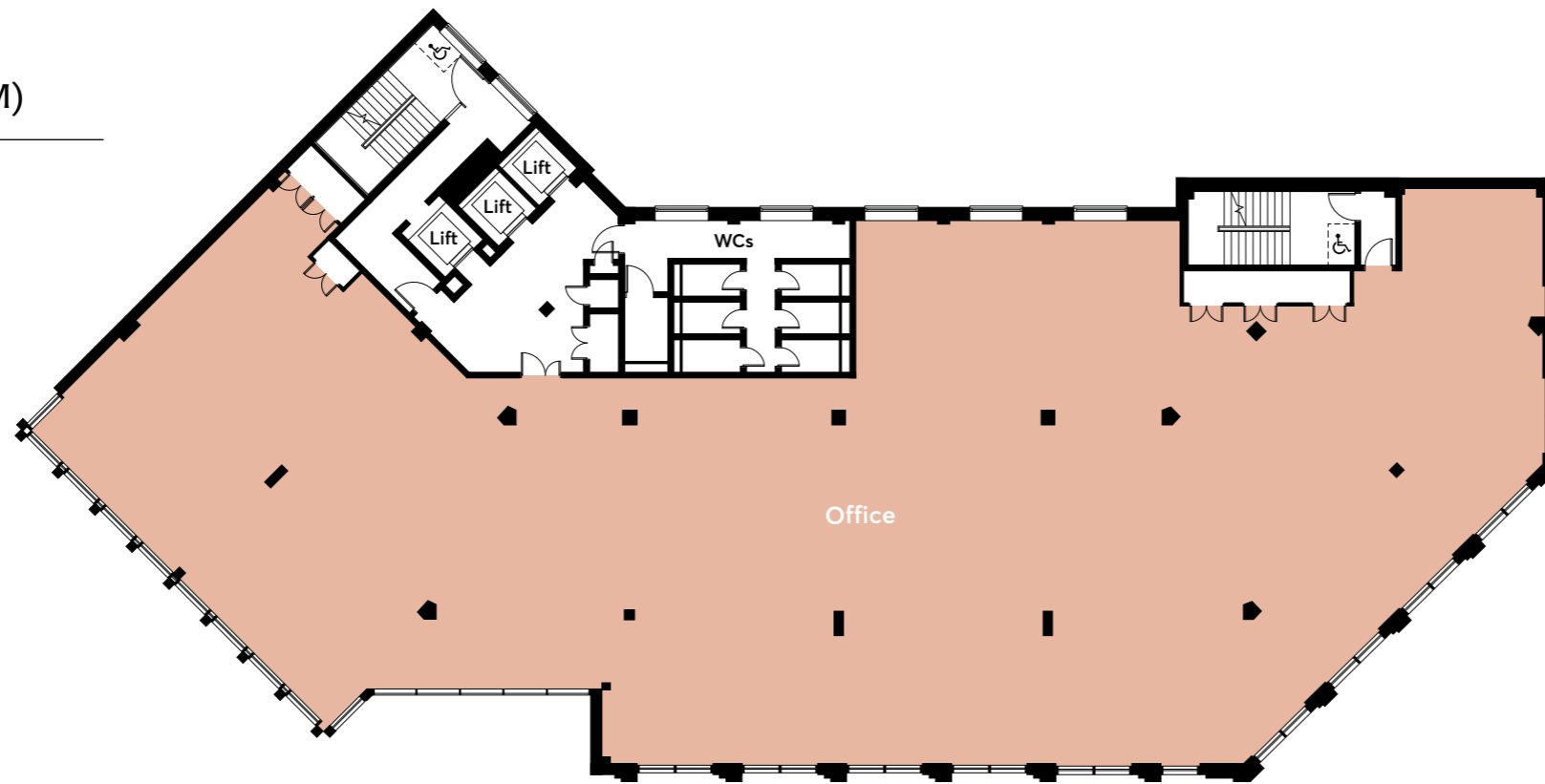
5,653 Sq Ft (with balcony)

525 Sq M (with balcony)



## 5th Floor

7,755 Sq Ft (720 Sq M)



An opportunity to join the businesses who've already chosen to make One Hundred Victoria Street their Bristol base: Mott MacDonald; RSA; and CACI.

Only the 5th, 7th and part Ground Floor suites remain.

Floor	Area (Sq Ft)	Area (Sq M)
7th	5,653 (1,104 balcony)	525 (103 balcony)
6th	LET	LET
5th	7,755	720
4th	LET	LET
3rd	LET	LET
2nd	LET	LET
1st	LET	LET
Ground	1,227	113
<b>Total</b>	<b>14,635</b>	<b>1,359</b>

Measured in accordance with IPMS 3.

ONE  
HUNDRED



Seventh Floor office suite

ONE  
HUNDRED

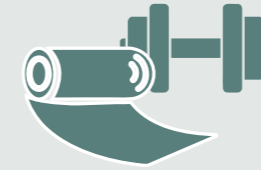




Welcoming double  
height reception



3 meeting booths  
engineered with  
acoustic materials



Gym and  
Fitness Studio



High-spec showers  
and changing facilities



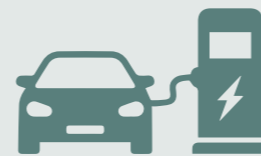
125 secure  
Cycle spaces



Extensive lockers  
and drying room



Building  
App

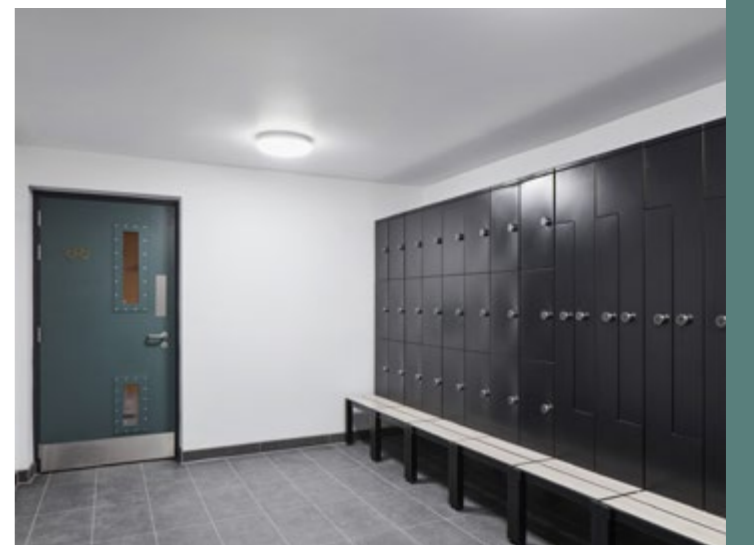


9 EV Car Parking  
Spaces, of which  
2 are accessible



Wiredscore  
Platinum

ONE  
HUNDRED



# Ground Floor amenity

**Key Ground Floor Amenities:**

- Reception
- Fitness Studio
- Office Suite (1,227 Sq Ft)
- Café



ONE  
HUNDRED



**The high specification gym on the Ground Floor will provide the perfect place to unwind and recharge.**

**Exceptional amenity**

ONE  
HUNDRED

**The creation of an inspiring environment  
and a sustainable future.**

**One Hundred boasts the following  
credentials to ensure that this vision is met.**



Exceptional amenity

ONE  
HUNDRED



## NEW £300M INNOVATION & ENTERPRISE CAMPUS

is being developed by University of Bristol adjacent to Bristol Temple Meads Railway Station.



## VOTED COOLEST CITY

by Rough Guides UK for first-rate nightlife, thriving creative and tech industries and easy access to the great outdoors.



## BRISTOL IS THE UK'S FIRST CYCLING CITY

## Centrally located within minutes of an abundance of amenities.

One Hundred's central location places it in the heart of the city with a wide array of varied amenities from bars to restaurants, cafes to street food markets, gyms to open spaces and so much more.

### Cafés

- 1 Mokoko
- 2 Veeno
- 3 Spicer & Cole
- 4 Small Goods
- 5 Double Puc
- 6 Hart's Bakery
- 7 Greggs
- 8 Philpotts Cafe
- 9 Starbucks

### Food Markets

- 1 St Nicholas Food Market
- 2 Temple Quay Food Market
- 3 Finzels Reach Food Market

### Metrobus Stops

- 1 M1
- 2 M2

### Hotels

- 1 Hilton Garden Inn
- 2 Ibis
- 3 Holiday Inn Express
- 4 Novotel
- 5 Premier Inn
- 6 Leonardo Hotel
- 7 Mercure

### Bars / Pubs

- 1 Left Handed Giant
- 2 Cornubia
- 3 Ye Shakespeare
- 4 King's Head
- 5 Knights Templar

### Restaurants

- 1 Harbour House
- 2 Riverstation
- 3 Pasture
- 4 Recess
- 5 Bocabar
- 6 Lamy

### Fitness

- 1 Workout
- 2 Hyre

### Miscellaneous

- 1 Temple Meads
- 2 Castle Park
- 3 Cabot Circus
- 4 King Street
- 5 Corn Street
- 6 Finzels Reach
- 7 Sainsbury's
- 8 Tesco
- 9 Box Hall



ONE  
HUNDRED

NEW £300M BRISTOL UNIVERSITY  
INNOVATION & ENTERPRISE CAMPUS

Central Location

ONE  
HUNDRED

**bristolonehundred.co.uk**

IN PARTNERSHIP WITH:

**CBRE** Investment Management **V7**

MISREPRESENTATION These particulars do not form part of any contract. Neither CBRE or Knight Frank nor any of its directors, employees or agents is authorised to give or make any warranty or representation whatsoever in relation to this property. Whilst information and particulars are given in good faith, intending purchasers or tenants must satisfy themselves independently as to the accuracy of all matters on which they intend to rely. All negotiations are subject to contract. Computer generated images are for indicative purposes only. Designed by [Moose Studios](#). November 2025.

LEASING AGENTS:

 **Knight Frank**

**Andy Smith**  
andy.smith@knightfrank.com  
**M** 07443 983 253  
**Polly Smart**  
polly.smart@knightfrank.com  
**M** 07929 673 626

**CBRE**

**Alex Riddell**  
alex.riddell@cbre.com  
**M** 07920 467 117  
**Alex Hayman**  
alex.hayman@cbre.com  
**M** 07827 252 847

**Further Information**