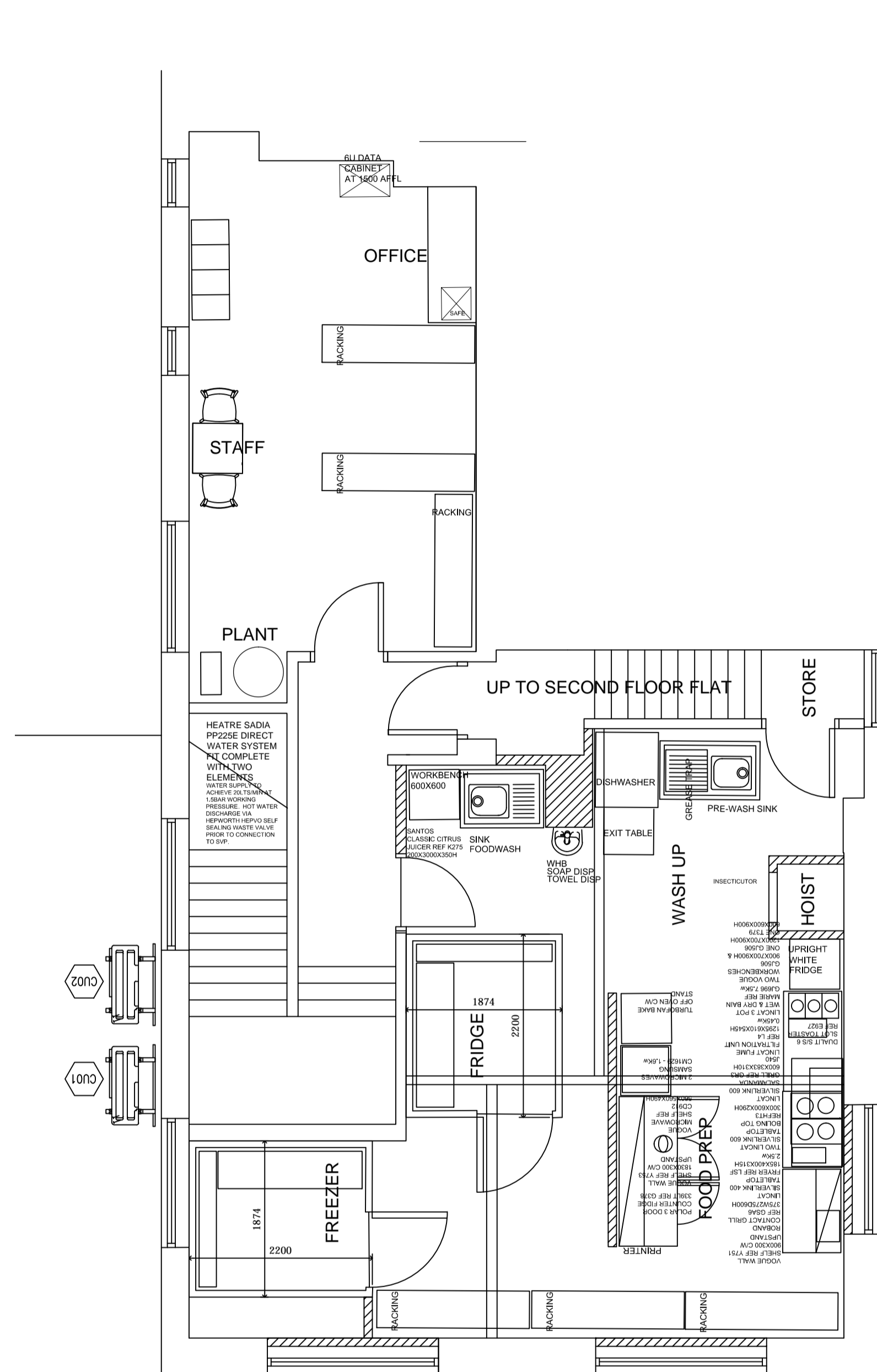
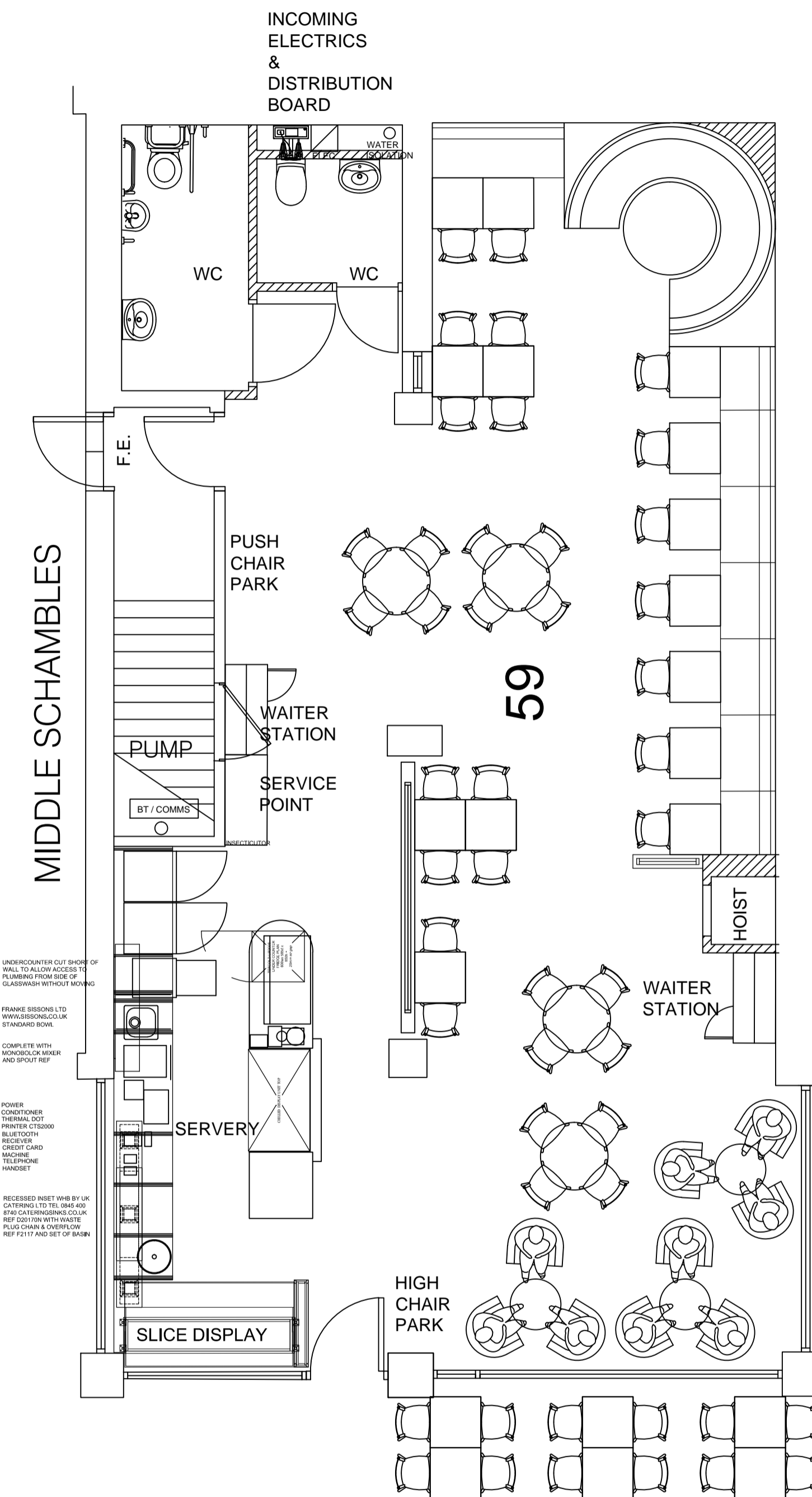


Written dimensions on these drawings shall take precedence over scaled dimensions. Contractors shall verify and be responsible for all dimensions and conditions on the project and this office must be notified of any variations from the dimensions and conditions shown by these drawings prior to commencement of any work. All contractors are deemed to have made themselves aware of site conditions prior to entering into any contract.

This drawing is the property of Patisserie Holdings Ltd. Copyright is reserved by them and the drawing is issued on condition that it is not copied, reproduced, retained or disclosed to any unauthorised person, either wholly or in part without the consent in writing of Patisserie Holdings PLC.



FIRST FLOOR PLAN



GROUND FLOOR PLAN

12 HIGH STREET

7			
6			
5			
4			
3			
2			
1			
0			

date	description	dm	chk
	PATISSERIE HOLDINGS PLC 146 - 156 SAREHOLE RD HALL GREEN, BIRMINGHAM B28 8DT telephone: +44 (0) 121 700 7777 www.patisserie-valerie.co.uk www.druckers.co.uk www.bakerandspice.uk.com www.philpotts.co.uk www.flourpowercity.co.uk		



project
5-7 HIGH STREET
CHESTERFIELD
DERBYSHIRE
S40 1PS

drawing title
PROPOSED GENERAL
ARRANGEMENT

drawn by I/JL	date OCT 17	checked
job no. 074	drawing no. 003	revision

drawing title
PROPOSED GENERAL ARRANGEMENT

scale 1/25 @ A1
1/50 @ A3

PRELIMINARY