

# Masson House, Brentford

W8





A truly exceptional three bedroom luxury penthouse flat, set within a striking residential building with 24 hour concierge and private gym in a prime position close to the river Thames. This spectacular property is situated on the seventh and eighth floor and offers outstanding unobstructed views.



*Kew Bridge is located directly opposite the wonderful open spaces of Kew Gardens. Transport links can be found nearby at Kew Bridge mainline and Gunnersbury underground stations. The M4 is highly convenient for access to Heathrow Airport.*



The apartment is entered through a wide entrance hall with wardrobe space. This leads to an expansive reception room, comprising drawing room and family kitchen dining room. Dramatic floor-to-ceiling sliding patio doors onto the private terrace are combined with an open floor plate to allow ample space for entertaining.

There are two double bedrooms, one of which is en-suite. A family bathroom and a utility room complete this floor.

On the eighth floor is a generous principle suite, featuring a large range of bespoke wardrobes and an en-suite bathroom.

The impressive private terrace spans the length and width of this room giving a 360 degree aspect with unobstructed views above the roof-line and across to the vast open spaces of Kew Gardens World Heritage Site and the River Thames.

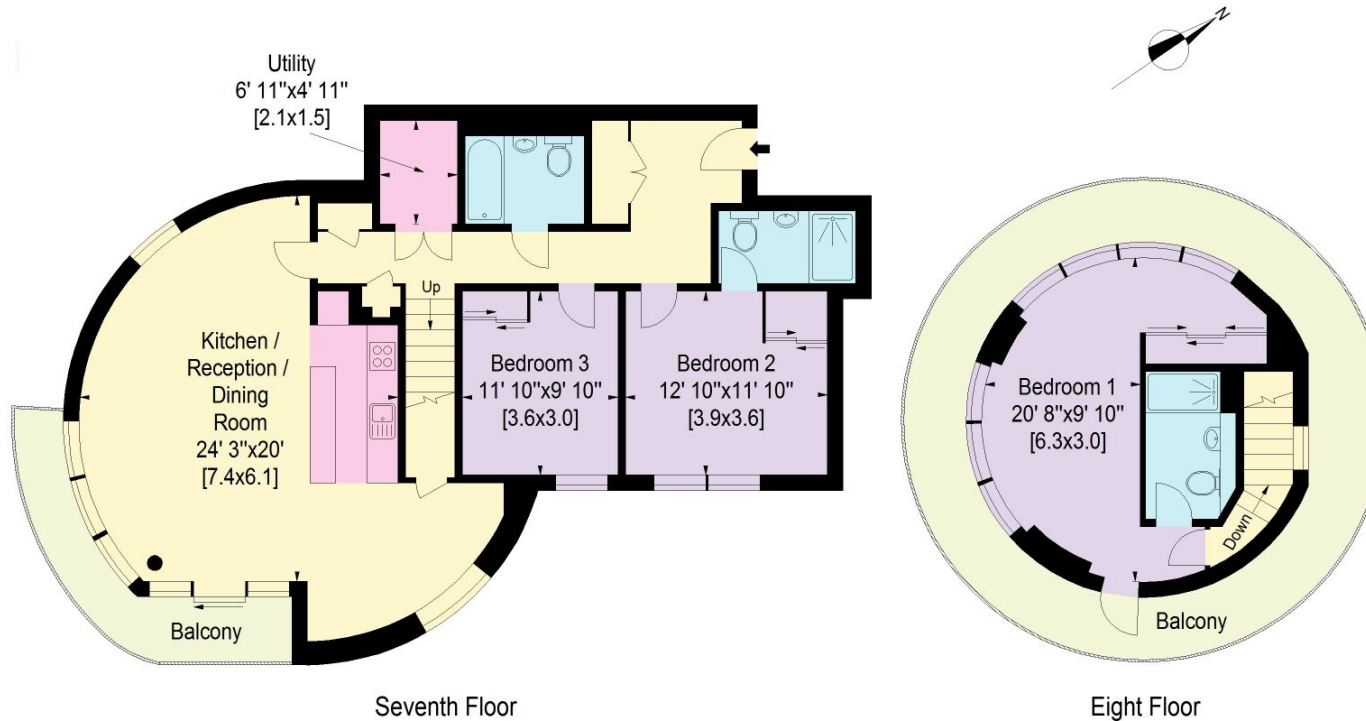


*Kew Bridge is located directly opposite the wonderful open spaces of Kew Gardens. Transport links can be found nearby at Kew Bridge mainline and Gunnersbury underground stations. The M4 is highly convenient for access to Heathrow Airport.*

**Approximate Gross Internal Floor Area**

**130.4 sq m/1404 sq ft**

This plan is for guidance only and must not be relied upon as a statement of fact. Attention is drawn to the Important Notice on the last page of the text of the Particulars



Knight Frank  
Chiswick  
64 Turnham Green Terrace  
Chiswick  
W4 1QN

[knightfrank.co.uk](https://www.knightfrank.co.uk)

**We would be delighted to tell you more.**

**The Chiswick Sales Team**  
020 7629 8171  
[chiswick@knightfrank.com](mailto:chiswick@knightfrank.com)



**Connecting people & property, perfectly.**

Fixtures and fittings: A list of the fitted carpets, curtains, light fittings and other items fixed to the property which are included in the sale (or may be available by separate negotiation) will be provided by the Seller's Solicitors.

Important Notice: 1. Particulars: These particulars are not an offer or contract, nor part of one. You should not rely on statements by Knight Frank LLP in the particulars or by word of mouth or in writing ("information") as being factually accurate about the property, its condition or its value. Neither Knight Frank LLP nor any joint agent has any authority to make any representations about the property, and accordingly any information given is entirely without responsibility on the part of the agents, seller(s) or lessor(s). 2. Photos, Videos etc: The photographs, property videos and virtual viewings etc. show only certain parts of the property as they appeared at the time they were taken. Areas, measurements and distances given are approximate only. 3. Regulations etc: Any reference to alterations to, or use of, any part of the property does not mean that any necessary planning, building regulations or other consent has been obtained. A buyer or lessee must find out by inspection or in other ways that these matters have been properly dealt with and that all information is correct. 4. VAT: The VAT position relating to the property may change without notice. 5. To find out how we process Personal Data, please refer to our Group Privacy Statement and other notices at <https://www.knightfrank.com/legal/privacy-statement>.

Particulars dated [May 2021]. Photographs and videos dated [May 2021].

Knight Frank is the trading name of Knight Frank LLP. Knight Frank LLP is a limited liability partnership registered in England and Wales with registered number OC305934. Our registered office is at 55 Baker Street, London W1U 8AN where you may look at a list of members' names. If we use the term 'partner' when referring to one of our representatives, that person will either be a member, employee, worker or consultant of Knight Frank LLP and not a partner in a partnership. If you do not want us to contact you further about our services then please contact us by either calling 020 3544 0692, email to [marketing.help@knightfrank.com](mailto:marketing.help@knightfrank.com) or post to our UK Residential Marketing Manager at our registered office (above) providing your name and address.