



Abinger Road, Chiswick W4



Abinger Road, Chiswick W4

The ground floor offers a expansive and welcoming hallway leading into a generous sized kitchen, entertaining and dining area. The Roundhouse designed kitchen with high quality appliances is further complemented by Cheville Parquet flooring, underfloor heating and the addition of a separate snug area. The kitchen/ dining room are incredibly light with large glass sliding doors that open directly onto the immaculately presented garden.



EPC
C

Guide price: £3,250,000

Tenure: Freehold

Local authority: London Borough of Hounslow

Council tax band: H





The first floor benefits from a wide and spacious landing from which there are three bedrooms including a fabulous principal bedroom with a high specification en suite shower room. There are two further bedrooms with built in storage, a family bathroom and a utility room.

The second floor boasts a generously sized bedroom, ample storage and a large en suite shower room.

Modern touches have been integrated throughout along with double-glazed wooden sash windows in the kitchen/dining room, principal bedroom and en suite. There is low level LED and wall feature lighting in the back garden and up lighters at both the front and at the side of the house.





Location Description

Abinger Road sits within the Bedford Park conservation area, London's first garden suburb and Chiswick's most sought-after enclave. It is a short distance from the excellent shops, boutiques and restaurants of central Chiswick, and close to Turnham Green Underground station (District Line - Zone 2). Central London and Heathrow (A4/M4) are easily accessible, as are several leading independent schools.

All times and distances approximate.

Knight Frank

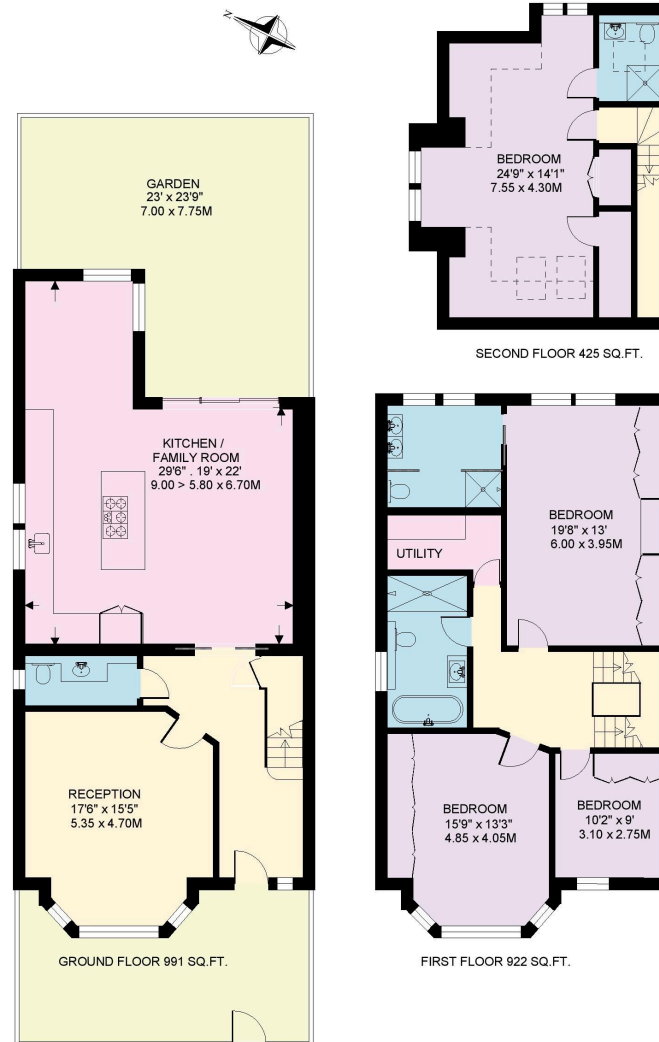
Chiswick

64 Turnham Green Terrace We would be delighted to tell you more

London

W4 1QN

[knightfrank.co.uk](https://www.knightfrank.co.uk)



Approximate Gross Internal Floor Area
217.2 sq m / 2338 sq ft

This plan is for guidance only and must not be relied upon as a statement of fact. Attention is drawn to the important notice on the last page of the text of the Particulars.

Fixtures and fittings: A list of the fitted carpets, curtains, light fittings and other items fixed to the property which are included in the sale (or may be available by separate negotiation) will be provided by the Seller's Solicitors.

Important Notice: 1. Particulars: These particulars are not an offer or contract, nor part of one. You should not rely on statements by Knight Frank LLP in the particulars or by word of mouth or in writing ("information") as being factually accurate about the property, its condition or its value. Neither Knight Frank LLP nor any joint agent has any authority to make any representations about the property, and accordingly any information given is entirely without responsibility on the part of the agents, seller(s) or lessor(s). 2. Photos, Videos etc: The photographs, property videos and virtual viewings etc. show only certain parts of the property as they appeared at the time they were taken. Areas, measurements and distances given are approximate only. 3. Regulations etc: Any reference to alterations to, or use of, any part of the property does not mean that any necessary planning, building regulations or other consent has been obtained. A buyer or lessee must find out by inspection or in other ways that these matters have been properly dealt with and that all information is correct. 4. VAT: The VAT position relating to the property may change without notice. 5. To find out how we process Personal Data, please refer to our Group Privacy Statement and other notices at <https://www.knightfrank.com/legals/privacy-statement>. Particulars dated September 2022. Photographs and videos dated September 2022.

Knight Frank is the trading name of Knight Frank LLP. Knight Frank LLP is a limited liability partnership registered in England and Wales with registered number OC305934. Our registered office is at 55 Baker Street, London W1U 8AN where you may look at a list of members' names. If we use the term 'partner' when referring to one of our representatives, that person will either be a member, employee, worker or consultant of Knight Frank LLP and not a partner in a partnership. If you do not want us to contact you further about our services then please contact us by either calling 020 3544 0692, email to marketing.help@knightfrank.com or post to our UK Residential Marketing Manager at our registered office (above) providing your name and address.

