



Sutton Court Road, Chiswick W4



Sutton Court Road, Chiswick W4

This five-bedroom house with expansive and elegant living space has been extended and designed to a high specification by the current owner. The green front door opens into a ground floor entrance hall, which benefits from a feature fireplace and original black and white marble flooring. To the left, you will find a working fireplace and shuttered bay windows - with direct access into the 'parterre' garden.



Guide price: £4,750,000

Tenure: Freehold

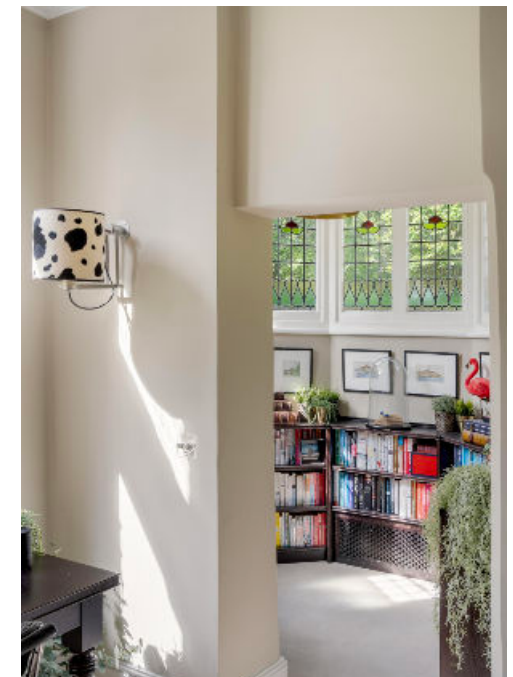
Local authority: London Borough of Hounslow

Council tax band: H





The ground floor further benefits from a library area, nestled inside one of the lower-level turrets, and features original leaded light glass windows. To the right of the entrance hall, you will find the kitchen, family area and large dining room, with a feature fireplace and bay windows. The dining room opens into the expansive kitchen/family room with bespoke Danish granite work surfaces. This area also features 51 ft 'Dinesen' flooring. The property benefits from 10ft high glass doors which open fully to reveal a large outdoor seating area. A utility room and cloakroom complete this floor. The first floor is home to the magnificent principal bedroom with a bespoke fitted dressing room and a luxurious en suite bathroom featuring a steam shower. A further guest suite on this floor also benefits from a dressing room and panelled en suite bathroom with an original roll top bath. The second floor offers three further double bedrooms, one of which is an en suite, and the family bathroom.





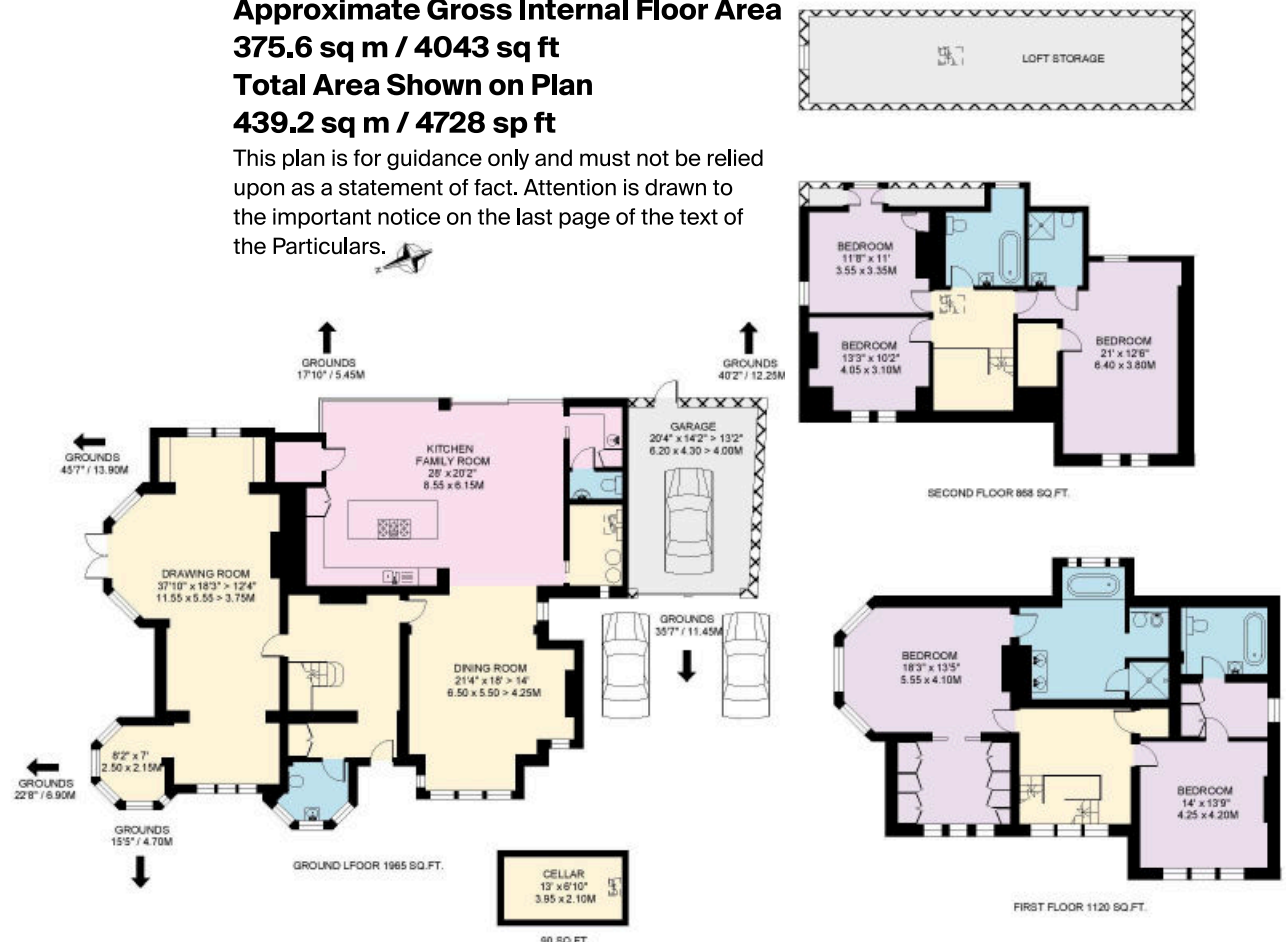
Location description

Externally, the property benefits from parking for multiple cars behind secure electric gates and a double garage in addition to manicured gardens. This is truly a unique opportunity to acquire an outstanding family home in an enviable Chiswick location.

Sutton Court Road is located in the London borough of Hounslow. It is close to the Chiswick Park tube station on the District Line, which is approximately a five minute walk away. The area is well-connected by public transport, with numerous buses passing through the area, as well as the District line, providing easy access to central London.

Approximate Gross Internal Floor Area
375.6 sq m / 4043 sq ft
Total Area Shown on Plan
439.2 sq m / 4728 sp ft

This plan is for guidance only and must not be relied upon as a statement of fact. Attention is drawn to the important notice on the last page of the text of the Particulars.



Knight Frank
Chiswick

64 Turnham Green Terrace
 W4 1QN

We would be delighted to tell you more

Adam Andersson Broholm

+44 20 3927 6315

[knightfrank.co.uk](https://www.knightfrank.co.uk)

adam.andersson@knightfrank.com



Fixtures and fittings: A list of the fitted carpets, curtains, light fittings and other items fixed to the property which are included in the sale (or may be available by separate negotiation) will be provided by the Seller's Solicitors.

Important Notice: 1. Particulars: These particulars are not an offer or contract, nor part of one. You should not rely on statements by Knight Frank LLP in the particulars or by word of mouth or in writing ("information") as being factually accurate about the property, its condition or its value. Neither Knight Frank LLP nor any joint agent has any authority to make any representations about the property, and accordingly any information given is entirely without responsibility on the part of the agents, seller(s) or lessor(s). 2. Photos, Videos etc: The photographs, property videos and virtual viewings etc. show only certain parts of the property as they appeared at the time they were taken. Areas, measurements and distances given are approximate only. 3. Regulations etc: Any reference to alterations to, or use of, any part of the property does not mean that any necessary planning, building regulations or other consent has been obtained. A buyer or lessee must find out by inspection or in other ways that these matters have been properly dealt with and that all information is correct. 4. VAT: The VAT position relating to the property may change without notice. 5. To find out how we process Personal Data, please refer to our Group Privacy Statement and other notices at <https://www.knightfrank.com/legals/privacy-statement>. Particulars dated January 2023. Photographs and videos dated January 2023.

All information is correct at the time of going to print. Knight Frank is the trading name of Knight Frank LLP. Knight Frank LLP is a limited liability partnership registered in England and Wales with registered number OC305934. Our registered office is at 55 Baker Street, London W1U 8AN. We use the term 'partner' to refer to a member of Knight Frank LLP or an employee or consultant. A list of members names of Knight Frank LLP may be inspected at our registered office. If you do not want us to contact you further about our services then please contact us by either calling 020 3544 0692, email to marketing.help@knightfrank.com or post to our UK Residential Marketing Manager at our registered office (above) providing your name and address.