



Chiswick High Road, London W4



Chiswick High Road W4

This flat is conveniently located in a private mews just off Chiswick High Road with access to many local shops, bars and restaurants. Both Gunnersbury and Chiswick Park underground stations (District Line & Overground) are within walking distance. There are various local bus routes on your door step and easy access to the A4/M4 for routes into and out of central London.



Guide price: £625,000

Tenure: Leasehold: approximately 991 years remaining

Service charge: £3,308 per annum, reviewed every year, next review due 2025

Ground rent: £350 per annum, reviewed every year, next review due 2025

Local authority: London Borough of Hounslow

Council tax band: E



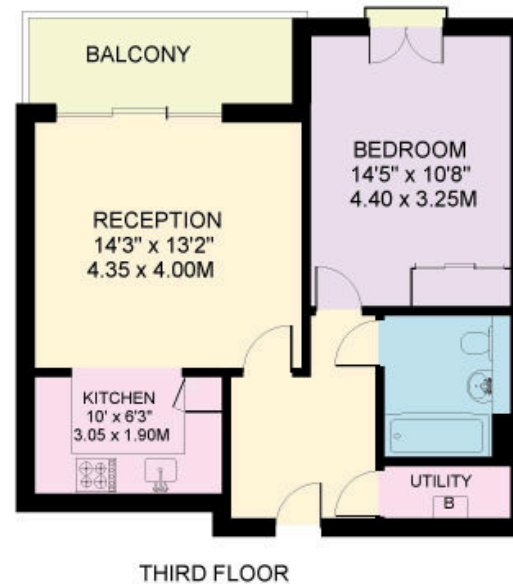
A stylish one bedroom third floor with east facing views over the developments courtyard and the London skyline. The flat has modern wooden floors throughout the reception space, and its neutral colour scheme and natural light make the property feel very spacious and contemporary. The kitchen is fully integrated with dishwasher, fridge/freezer and washing machine. The bedroom has integrated storage and space for king sized bed. The property benefits from a lift and 12h concierge service in a modern gated development.





Approximate Gross Internal Floor Area 53.2 sq m / 573 sq ft

This plan is for guidance only and must not be relied upon as a statement of fact. Attention is drawn to the important notice on the last page of the text of the Particulars.



Knight Frank

Chiswick

64 Turnham Green Terrace
W4 1QN

We would be delighted to tell you more

Lewin Craig-Corbett

020 3927 6315

[knightfrank.co.uk](https://www.knightfrank.co.uk)

lewin.craig-corbett@knightfrank.com



Fixtures and fittings: A list of the fitted carpets, curtains, light fittings and other items fixed to the property which are included in the sale (or may be available by separate negotiation) will be provided by the Seller's Solicitors.

Important Notice: 1. Particulars: These particulars are not an offer or contract, nor part of one. You should not rely on statements by Knight Frank LLP in the particulars or by word of mouth or in writing ("information") as being factually accurate about the property, its condition or its value. Neither Knight Frank LLP nor any joint agent has any authority to make any representations about the property, and accordingly any information given is entirely without responsibility on the part of the agents, seller(s) or lessor(s). 2. Photos, Videos etc: The photographs, property videos and virtual viewings etc. show only certain parts of the property as they appeared at the time they were taken. Areas, measurements and distances given are approximate only. 3. Regulations etc: Any reference to alterations to, or use of, any part of the property does not mean that any necessary planning, building regulations or other consent has been obtained. A buyer or lessee must find out by inspection or in other ways that these matters have been properly dealt with and that all information is correct. 4. VAT: The VAT position relating to the property may change without notice. 5. To find out how we process Personal Data, please refer to our Group Privacy Statement and other notices at <https://www.knightfrank.com/legals/privacy-statement>. Particulars dated April 2024. Photographs and videos dated April 2024.

All information is correct at the time of going to print. Knight Frank is the trading name of Knight Frank LLP. Knight Frank LLP is a limited liability partnership registered in England and Wales with registered number OC305934. Our registered office is at 55 Baker Street, London W1U 8AN. We use the term 'partner' to refer to a member of Knight Frank LLP or an employee or consultant. A list of members names of Knight Frank LLP may be inspected at our registered office. If you do not want us to contact you further about our services then please contact us by either calling 020 3544 0692, email to marketing.help@knightfrank.com or post to our UK Residential Marketing Manager at our registered office (above) providing your name and address.