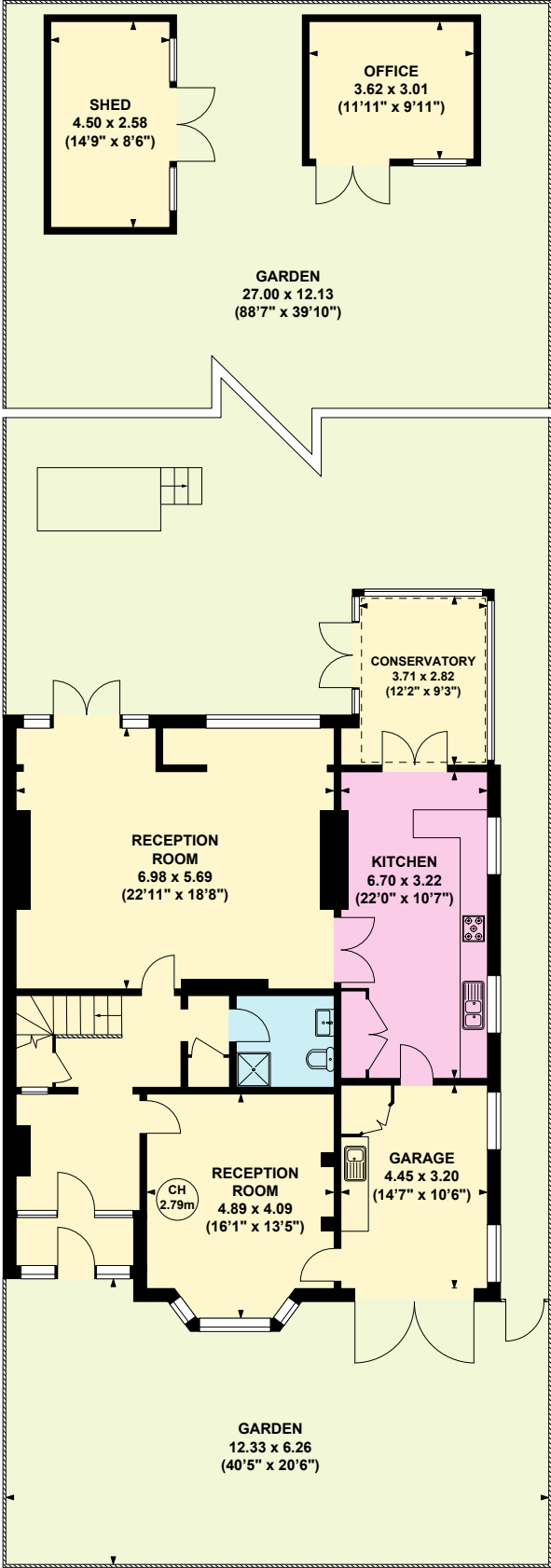
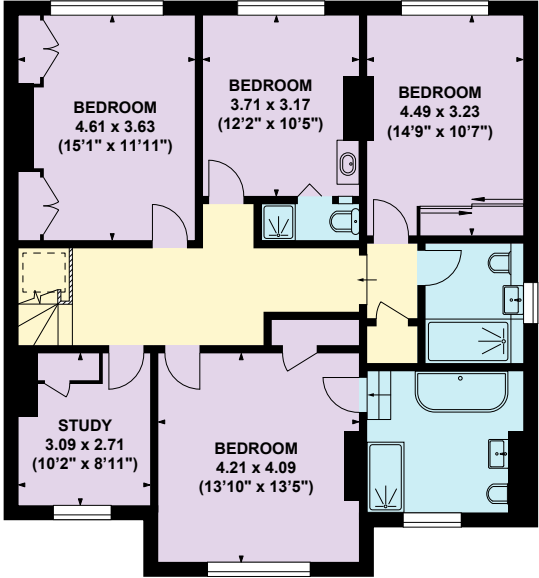


Park Road, Chiswick, W4

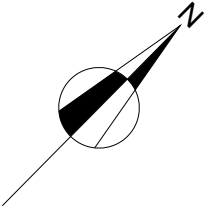
Approximate Gross Internal Area :	264.96 Sq. metres
(Including Office / Shed)	2852 Sq. feet
Office :	10.78 Sq. metres
	116 Sq. feet
Shed :	11.71 Sq. metres
	126 Sq. feet



GROUND FLOOR



FIRST FLOOR



Key :
CH - Ceiling Height