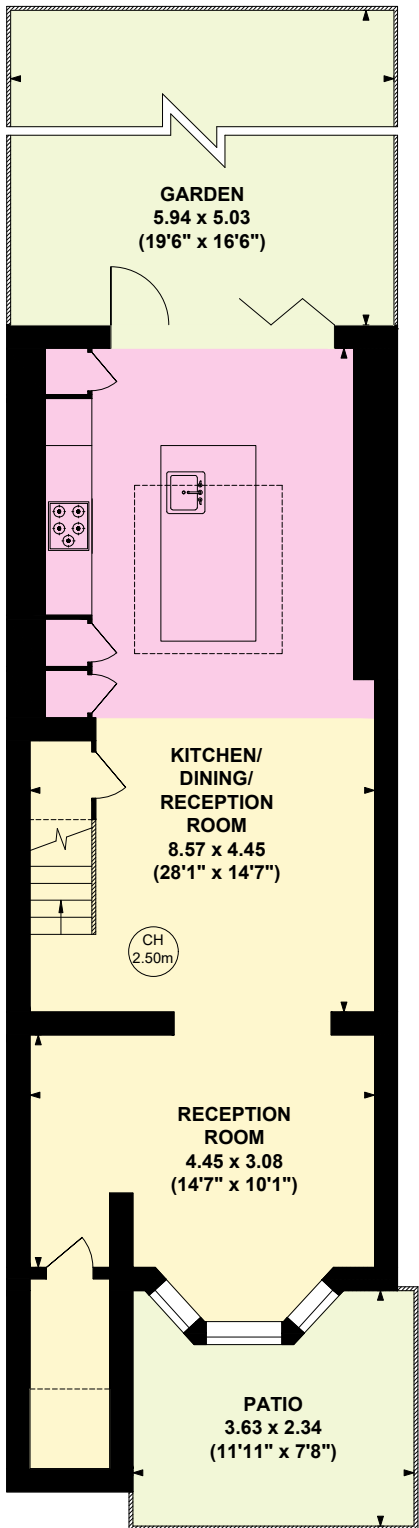
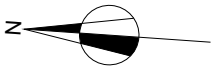


Acton Lane, W4

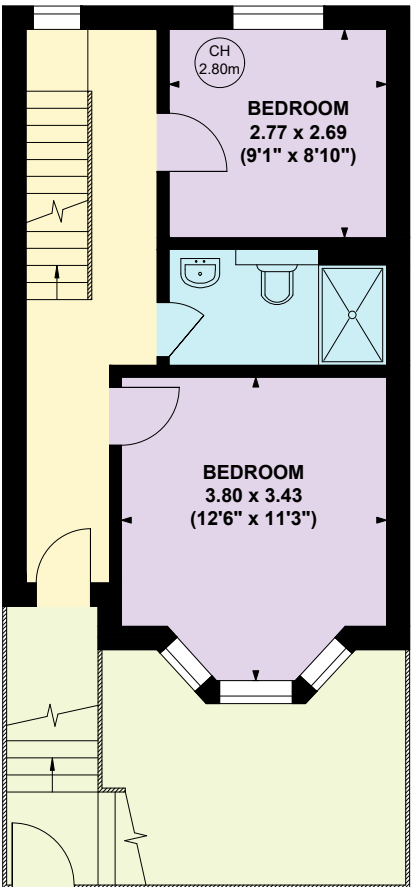
Approximate Gross Internal Area :
(Including Eaves Storage)
Eaves Storage :

157.38 Sq. metres
1694 Sq. feet
3.30 Sq. metres
35 Sq. feet

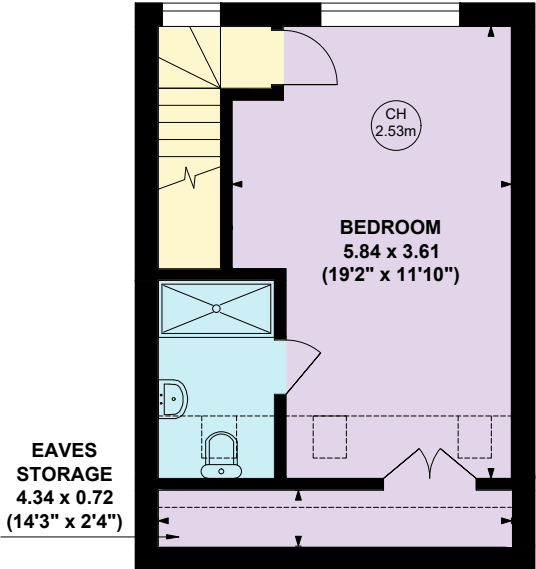
Key :
CH - Ceiling Height



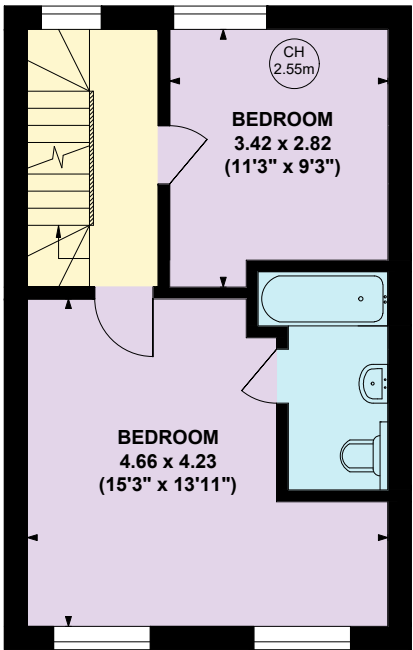
LOWER GROUND FLOOR



RAISED GROUND FLOOR



SECOND FLOOR



FIRST FLOOR