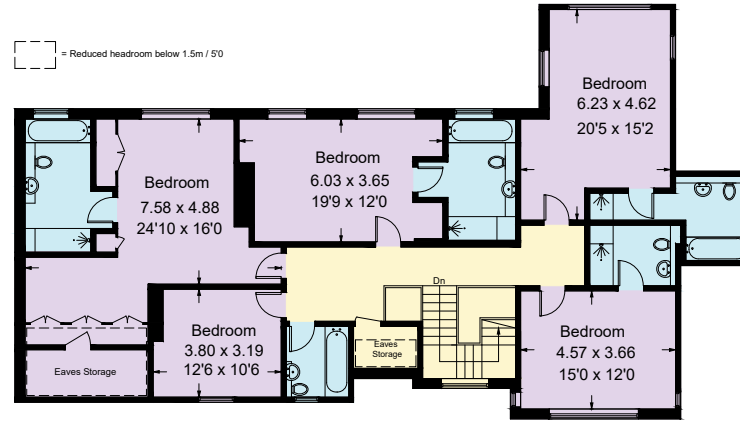
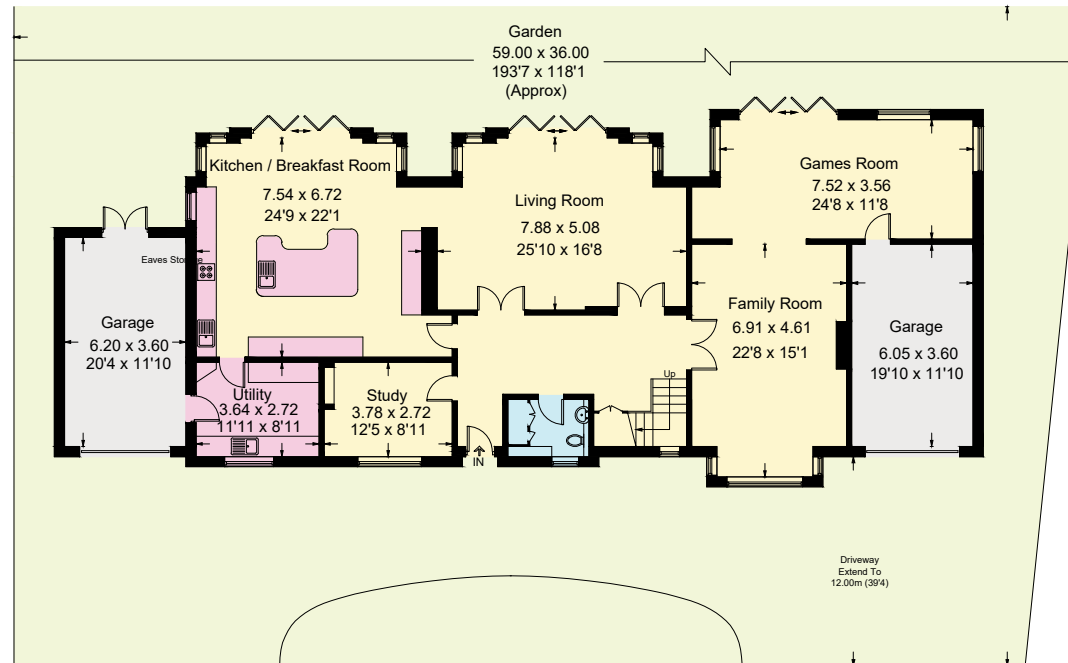


# Manor Way, BR3

Approximate Gross Internal Area = 404.6 sq m / 4355 sq ft  
 (Excluding Eaves Storage/ Reduced Headroom)  
 Eaves Storage/ Reduced Headroom = 9.4 sq m / 101 sq ft  
 Total = 414.0 sq m / 4456 sq ft



First Floor



Ground Floor

Illustration for identification purposes only, measurements are approximate,  
 not to scale. floorplansUsketch.com © (ID998122)