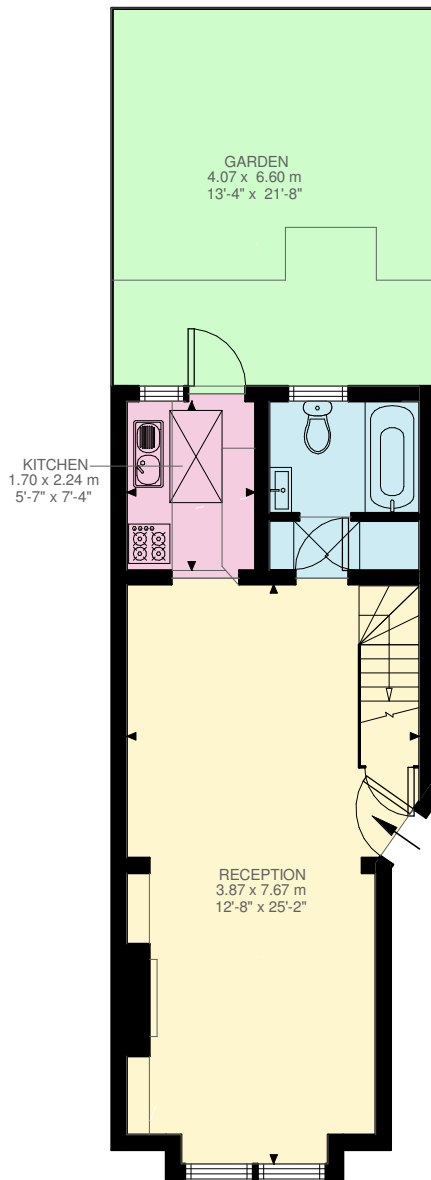
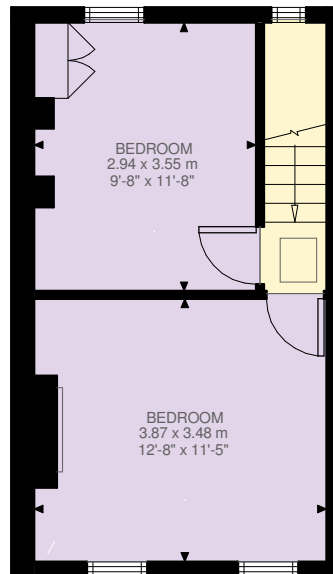


Pellatt Road, SE22

Approximate Gross Internal Area : 64.16 SQ.M / 691 SQ.FT
(EXCLUDING LOFT)
LOFT 27.85 SQ.M / 300 SQ.FT
INCLUSIVE TOTAL AREA 92.01 SQ.M / 990 SQ.FT



Ground Floor
391 ft²



First Floor
300 ft²

