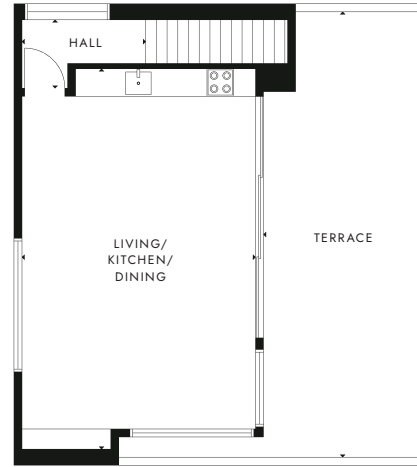
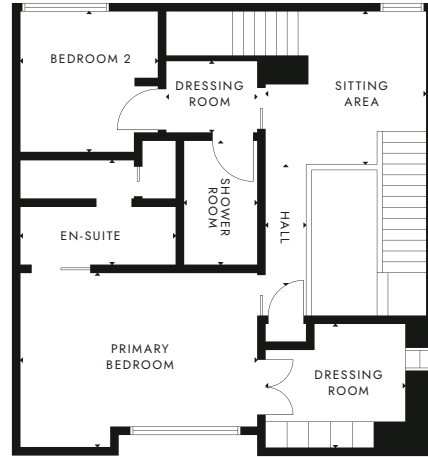
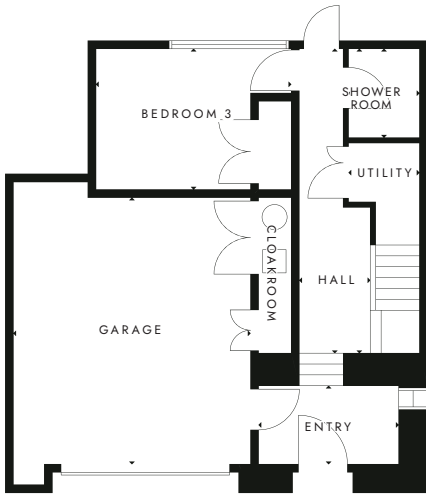




# FAIRWAYS

ST ANDREWS



## GROUND FLOOR

Double garage	5.9m x 6.6m	9'4" x 21'8"
Bedroom 3	3.9m x 3.5m	12'9" x 11'6"
Shower room	1.8m x 2.3m	5'11" x 7'7"
Vestibule/cloakroom	3.4m x 2.0m	11'2" x 6'6"
Utility	1.8m x 1.5m	5'11" x 4'11"
Hall	3.0m x 8.4m	9'10" x 27'7"



## FIRST FLOOR

Primary bedroom	6.0m x 4.3m	19'8" x 14'1"
Primary dressing room	3.4m x 3.1m	11'2" x 10'2"
Primary en-suite	3.9m x 2.9m	12'9" x 9'6"
Balcony	2.5 sqm	27 sqft
Bedroom 2	2.9m x 3.5m	9'6" x 11'6"
Dressing room	1.9m x 1.8m	6'2" x 5'11"
Shower room	1.8m x 3.0m	5'11" x 9'10"
Hall	4.0m x 7.6m	13,1" x 24,11"

GROUND FLOOR

FIRST FLOOR

SECOND FLOOR

## SECOND FLOOR

Living/Kitchen/Dining	6.0m x 9.2m	19'8" x 30'2"
Terrace	46 sqm	495 sqft

# The Swilcan

## 3 BEDROOM TOWNHOUSE

GIA: 273 SQM | 2,938 SQFT

