

# LOCHFORD GARDENS

— DUNBAR —

**HH**  
HARRISON HUNT

 **Knight  
Frank**

A COLLECTION OF  
HIGH QUALITY,  
3 & 4 BEDROOM  
SUSTAINABLE  
FAMILY HOMES  
DESIGNED BY  
AWARD WINNING  
ARCHITECTS

Hallhill, Dunbar



## Location

Lochford Gardens is perfectly located to the south of Dunbar centre, just minutes from Belhaven Beach, surrounded by greenery and open space. It is uniquely situated to take advantage of the open farm views to the West and South, resulting in these sustainable homes having a lovely rural feel but with easy access to Edinburgh.

Renowned for its high sunshine record, this enviable harbour side town is surrounded by rugged coastline, wonderful sandy beaches and beautiful countryside as well as benefiting from great amenities. The town centre of Dunbar boasts an array of independent shops, cafés, pubs and award winning restaurants, as well as a large supermarket. There are also a number of highly regarded schools in the local area, including Belhaven Hill independent school.

For outdoor pursuits, this location is unrivalled with Winterfield Golf Course nearby, plus a range of water sports to choose from, as well as plenty of country and beach walks.

Furthermore, the town has a real sense of community to it and hosts various shows, exhibitions and performances throughout the year.

The transport links to Edinburgh or further afield are great. The development has easy access to the A1, providing good road links to Edinburgh. There are also regular trains from Dunbar station which reach Edinburgh Waverley in around 25 minutes. Edinburgh International Airport is less than an hour away for national and international flights to a huge range of destinations.



## The Development

Lochford Gardens is a collection of highly efficient new homes. The development will be completed over three phases with a total of 37 units.

The development will consist of 3 & 4 bedroom detached and semi-detached family homes, in 7 different house types to cater for a huge array of modern living needs. Each of the house types have been meticulously designed by award winning architects Sanderson Borland in order to maximise views, open plan living and flexible spaces with ample storage throughout. Each house benefits from a private garden and parking with the added extra of communal open space and a play area to bring about a sense of community.

The combination of new construction technology integrating the use of Structural Insulated Panels (SIP) with a mini district ground source heat pump array will deliver 80% fuel savings for a typical family and reduce the carbon footprint by 75% on a typical new house.



**HH**  
**HARRISON HUNT**

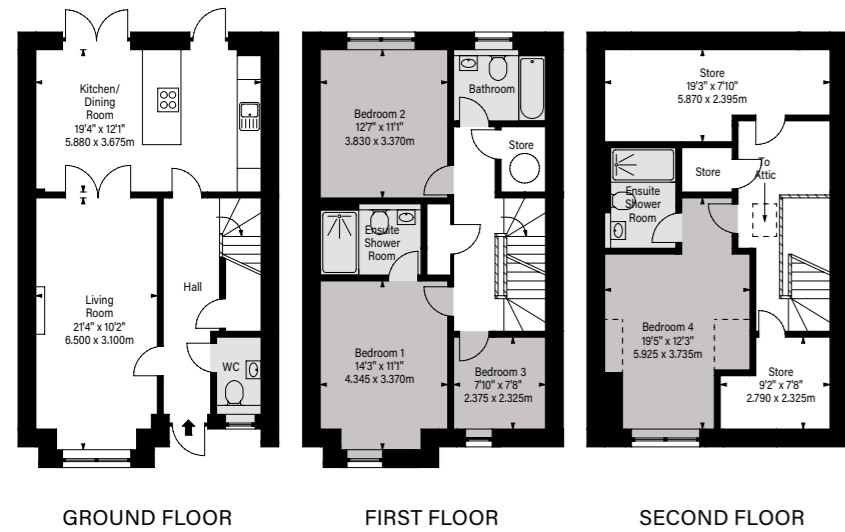
**The Developer**

Harrison Hunt operates in the space between the national volume house builders and local small- scale developers with the principal focus to serve high-end residential and retirement living sectors, creating beautifully designed, bespoke, sustainable homes. The team is architect led and also contributes to a number of sustainable community projects across the UK.





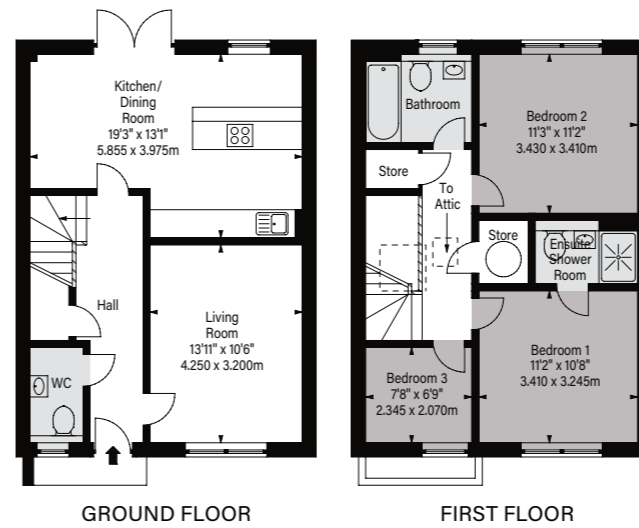
Four bedroom, three storey townhouse with private parking and garden



Approx. Gross Internal Area: 1845 Sq Ft - 171.40 Sq M  
For identification only. Not to scale.



Three bedroom, semi-detached home with private parking and garden



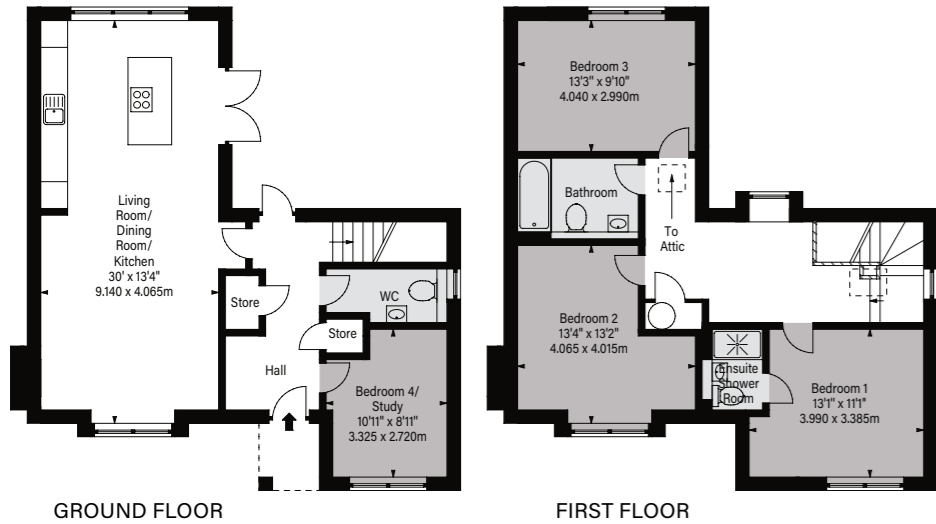
Approx. Gross Internal Area: 1063 Sq Ft - 98.75 Sq M  
For identification only. Not to scale.





12

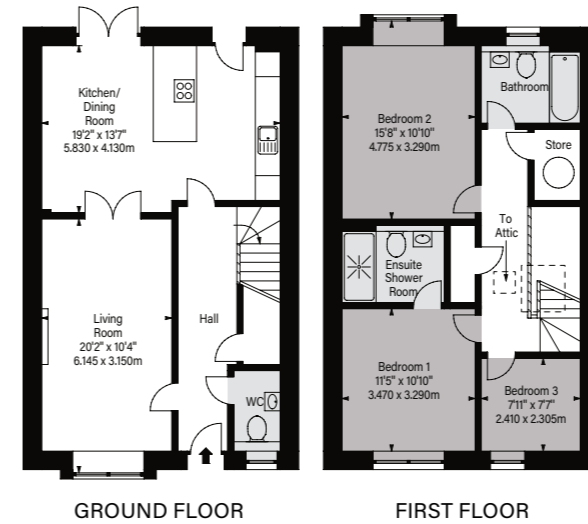
A detached four bedroom home with private parking and garden



Approx. Gross Internal Area: 1376 Sq Ft - 127.83 Sq M  
For identification only. Not to scale.



A detached three bedroom home with private parking and garden



Approx. Gross Internal Area: 1286 Sq Ft - 119.47 Sq M  
For identification only. Not to scale.



13

# Specification

## KITCHEN

- High quality Leicht, award winning, German kitchen and worktops from Kitchen International
  - Option of worktops and finishes\*
- Seimens appliances (or similar)
- High specification integrated appliances and white goods

## BATHROOMS & EN SUITE

- Vitra sanitaryware (or similar)
- Vado taps showers and fittings (or similar)
- Towel radiators
- High quality tiling to walls and floors (option to select tiling choices)

## DECORATION & FINISHES

- High quality painted finish to internal walls, ceilings, and woodwork
- High specification painted timber doors
- Stainless steel ironmongery
- Choice of flooring throughout (various cost brackets)\*

## ELECTRICAL

- Low energy lighting fitted throughout
- Spotlights in kitchen and bathroom areas
- Pendants in bedrooms and landings
- Optional extra of solar panel install\*

## PLUMBING & HEATING

- Ground Source Heat Pump – the private residential development ground source district heating system installed in Scotland (by Kensa)
- More information on this here : <https://www.kensaheatpumps.com/ground-source-heat-pump-comparisons/>
- Towel radiators in bathroom and en suite
- Future provision for ground floor shower

## SECURITY & SAFETY

- Heat and smoke detectors throughout

## DRIVEWAY/DEDICATED PARKING SPACE

- Permeable block paving driveway
- Installation of a 7kW electric car charging point for each property

## EXTERNALS

- Double glazed doors to rear terrace area
- 1.8m slatted screen fence to side and rear boundary
- Slabbed pathways
- Paved patio area to rear garden
- High performance uPVC double glazed windows

## STORAGE

- Large cupboards across ground and first floor
- Options for built in wardrobes available at additional cost

## CONSTRUCTION

- Highly insulated, SIP\*\* construction designed and manufactured in Scotland

## FACTORING & WARRANTY

- Factoring provided on site by Hacking and Paterson
- Each home comes with a 12 year defect warranty cover provided by Ark Insurance Group

## SUSTAINABILITY

- Ground source heat pump is a low carbon heating system, and does not require a separate gas boiler. 80% saving on emissions versus gas. As per this article <https://www.kensaheatpumps.com/>
- The houses have a predicted EPC rating of B
- Very efficient hot water and heating, due to heat pump technology and highly insulated buildings
- SIPs as opposed to more carbon intensive traditional construction method. <https://www.sipsecopanel.co.uk> more information can be found at the manufacturer's website
- Future proofed ahead of planned discontinuation of gas provision within Scotland

Disclaimer: The developer reserves the right to amend this specification\* subject to build stage

\* Subject to build stage of individual plot  
\*\* Structural Insulated Panels



Important Notice: 1. Particulars: These particulars are not an offer or contract, nor part of one. You should not rely on statements by Knight Frank LLP in the particulars or by word of mouth or in writing ("information") as being factually accurate about the property, its condition or its value. Neither Knight Frank LLP nor any joint agent has any authority to make any representations about the property, and accordingly any information given is entirely without responsibility on the part of the agents, seller(s) or lessor(s). 2. Photos, Videos etc: The photographs, property videos and virtual viewings etc. show only certain parts of the property as they appeared at the time they were taken. Areas, measurements and distances given are approximate only. 3. Regulations etc: Any reference to alterations to, or use of, any part of the property does not mean that any necessary planning, building regulations or other consent has been obtained. A buyer or lessee must find out by inspection or in other ways that these matters have been properly dealt with and that all information is correct. 4. VAT: The VAT position relating to the property may change without notice. 5. To find out how we process Personal Data, please refer to our Group Privacy Statement and other notices at <https://www.knightfrank.com/legals/privacy-statement>. Particulars dated May 2023. Photographs and videos dated Various dates. All information is correct at the time of going to print. Knight Frank is the trading name of Knight Frank LLP. Knight Frank LLP is a limited liability partnership registered in England and Wales with registered number OC305934. Our registered office is at 55 Baker Street, London W1U 8AN. We use the term 'partner' to refer to a member of Knight Frank LLP, or an employee or consultant. A list of members names of Knight Frank LLP may be inspected at our registered office. If you do not want us to contact you further about our services then please contact us by either calling 020 3544 0692, email to [marketing.help@knightfrank.com](mailto:marketing.help@knightfrank.com) or post to our UK Residential Marketing Manager at our registered office (above) providing your name and address.

Brochure by [wordperfectprint.com](http://wordperfectprint.com)





**0131 222 9600**

**80 Queen Street, Edinburgh, EH2 4NF**

**edres@knightfrank.com**

**[KnightFrank.co.uk](http://KnightFrank.co.uk)**