



Lower Hampton Road, Sunbury-on-Thames, Surrey

---





# An elegant Victorian riverside home with a 70ft mooring.

Built in 1889 and believed to be the former home of Sir Henry Knight, Lord Mayor of London. The property occupies a prominent position on the river bank. Birkholme offers six bedrooms and three receptions with generous room proportions and character features including ornate ceiling details, picture rails, wood and tiled floors, butlers bell and high ceilings throughout with a charming turreted corner to house providing a real feature to the drawing room, principal bedroom and top floor room all with river views.

The property also has a one room coach house with kitchen and bathroom above the car port/garage with stable and tack room. Sitting centrally in south facing grounds of 0.5 acre with direct frontage to the river and a mooring. The gardens are walled to one side and have a magnolia tree along with pear and apple trees.

Birkholme is ideally located near to Hampton Court Palace and East Molesey, the area is well known for its attractive tree lined streets and is close to the local cafes, boutiques, restaurants and amenities.

A larger selection of shops can be found in Kingston upon Thames with its wide range of high street names and department stores. Hampton Court mainline station is within walking distance and provides regular train services to London Waterloo.























Access to the M25, M3 and A3 is a short distance for Central London, Heathrow and Gatwick Airports.

Schooling in the area is exceptional with many options for both state education to include The Orchard Infant School, St. Lawrence Junior School, St. Paul's Catholic College and independent schools to include Weston Green School, Twickenham Preparatory School, Hampton Court House, Lady Eleanor Holles, Hampton, Surbiton High School, Claremont Fan Court School and ACS Cobham International School. All state school references are subject to catchment areas.

Hampton Station - 1.5 miles  
M3 (J1) - 2 miles  
Walton-On-Thames - 3.5 miles  
Central London - 20 miles  
All distances are approximate











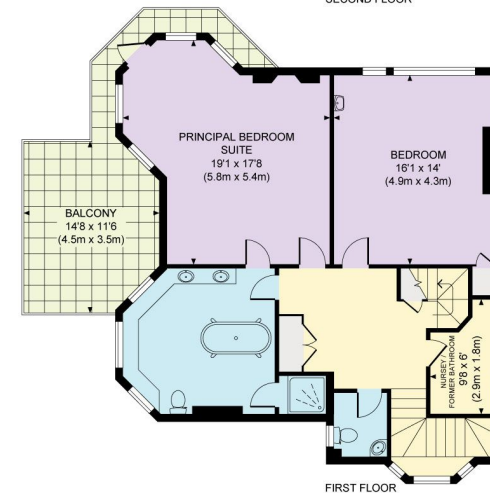
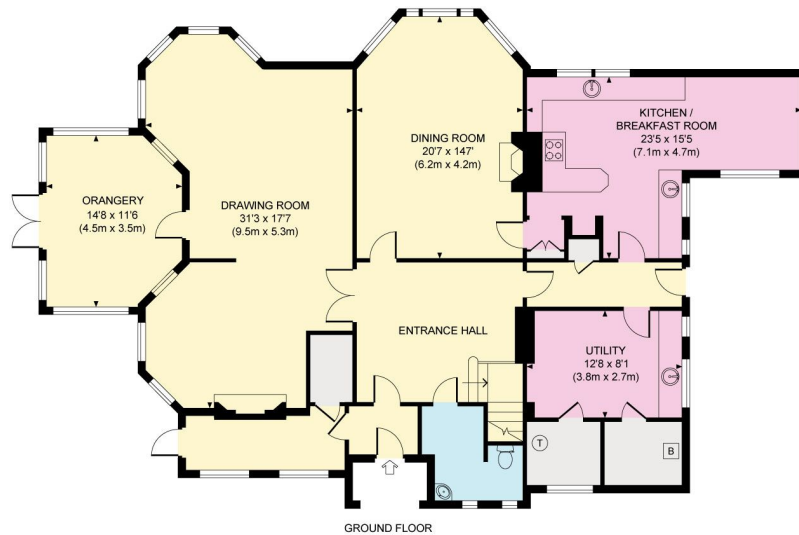
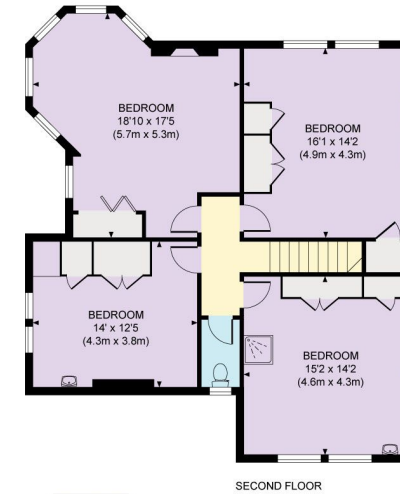
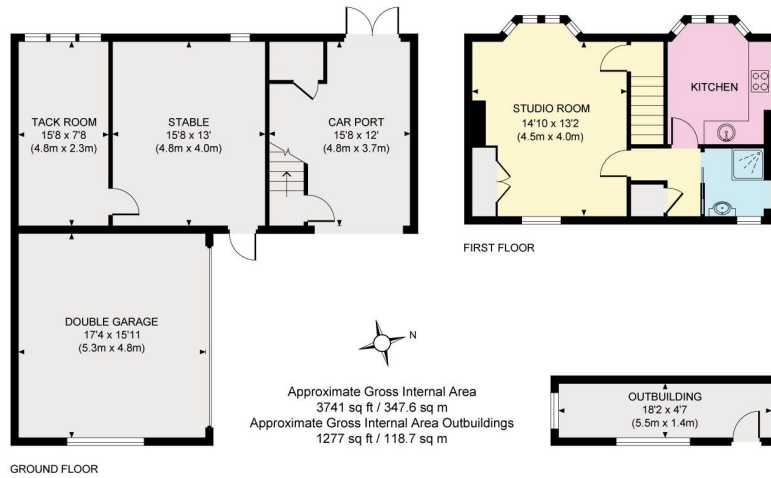












**Knight Frank**

**Esher**

47 High Street

Esher

KT10 9RL

[knightfrank.co.uk](http://knightfrank.co.uk)

**We would be delighted to tell you more**

**Adam Burlison**

01372 464496

[adam.burlison@knightfrank.com](mailto:adam.burlison@knightfrank.com)



Fixtures and fittings: A list of the fitted carpets, curtains, light fittings and other items fixed to the property which are included in the sale (or may be available by separate negotiation) will be provided by the Seller's Solicitors.

Important Notice: 1. Particulars: These particulars are not an offer or contract, nor part of one. You should not rely on statements by Knight Frank LLP in the particulars or by word of mouth or in writing ("information") as being factually accurate about the property, its condition or its value. Neither Knight Frank LLP nor any joint agent has any authority to make any representations about the property, and accordingly any information given is entirely without responsibility on the part of the agents, seller(s) or lessor(s). 2. Photos, Videos etc: The photographs, property videos and virtual viewings etc. show only certain parts of the property as they appeared at the time they were taken. Areas, measurements and distances given are approximate only. 3. Regulations etc: Any reference to alterations to, or use of, any part of the property does not mean that any necessary planning, building regulations or other consent has been obtained. A buyer or lessee must find out by inspection or in other ways that these matters have been properly dealt with and that all information is correct. 4. VAT: The VAT position relating to the property may change without notice. 5. To find out how we process Personal Data, please refer to our Group Privacy Statement and other notices at <https://www.knightfrank.com/legals/privacy-statement>.

Particulars dated February 2023. Photographs and videos dated February 2023.

All information is correct at the time of going to print. Knight Frank is the trading name of Knight Frank LLP. Knight Frank LLP is a limited liability partnership registered in England and Wales with registered number OC305934. Our registered office is at 55 Baker Street, London W1U 8AN. We use the term 'partner' to refer to a member of Knight Frank LLP, or an employee or consultant. A list of members names of Knight Frank LLP may be inspected at our registered office. If you do not want us to contact you further about our services then please contact us by either calling 020 3544 0692, email to [marketing.help@knightfrank.com](mailto:marketing.help@knightfrank.com) or post to our UK Residential Marketing Manager at our registered office (above) providing your name and address.