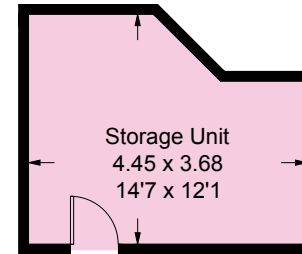


Esher Park Avenue, KT10

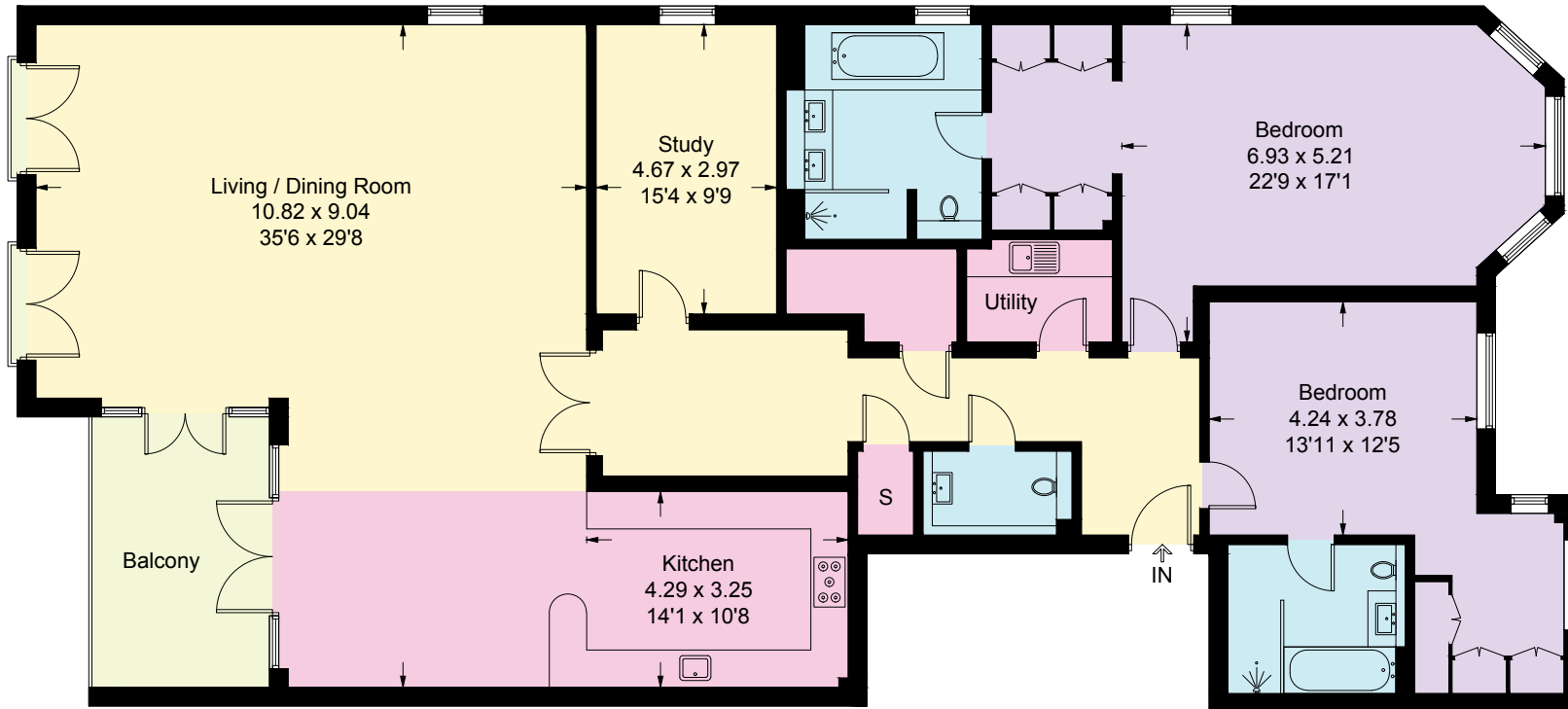
Approximate Gross Internal Area = 229.1 sq m / 2467 sq ft

Storage Unit = 14.1 sq m / 152 sq ft

Total = 243.2 sq m / 2619 sq ft



(Not Shown In Actual Location / Orientation)



First Floor

Measured in accordance with RICS Code of Measuring Practice. To be used for identification and guidance purposes only.
Whilst every care is taken in the preparation of this plan, please check all dimensions, shapes and compass bearings before making any decisions reliant upon them.
www.london58.com © 2022 hello@london58.com