

West End Lane, Esher, Surrey



Property For Sale in West End Village, Esher.

A refurbished three bedroom double fronted period cottage overlooking the cricket green and duck pond in the heart of the village.

The cottage has been completely modernised throughout and offers two reception rooms, both overlooking the green and a spacious modern kitchen/dining/family room to the rear. The first floor has three bedrooms, two bathrooms (one en-suite).

To the outside the property has a driveway, garden and additional outbuilding ideal as a home office/garden room.



Tenure: Freehold

Local authority: Elmbridge Borough Council

Council tax band: E





Subheading

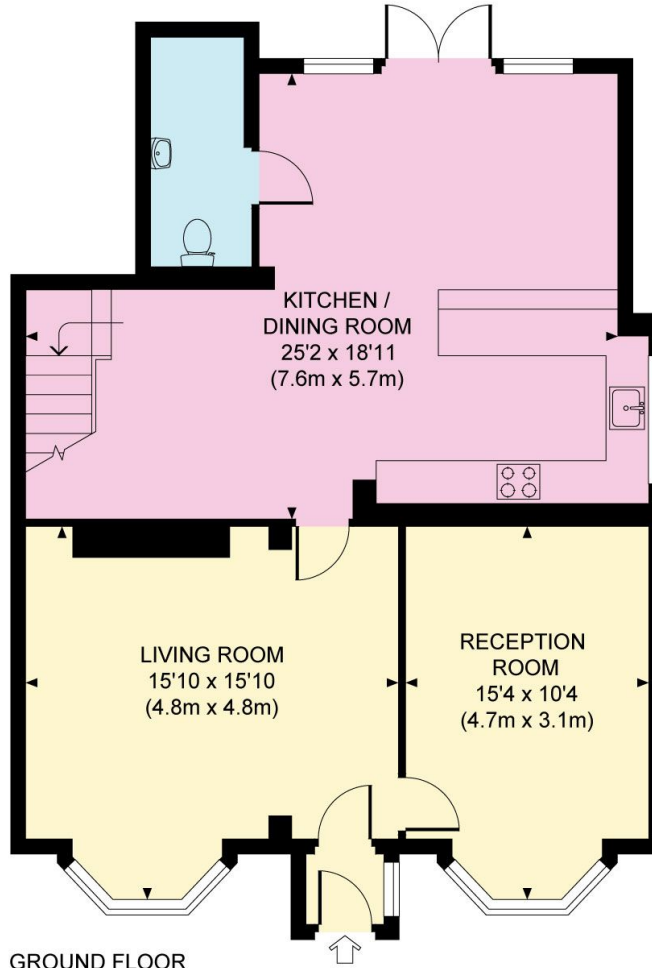
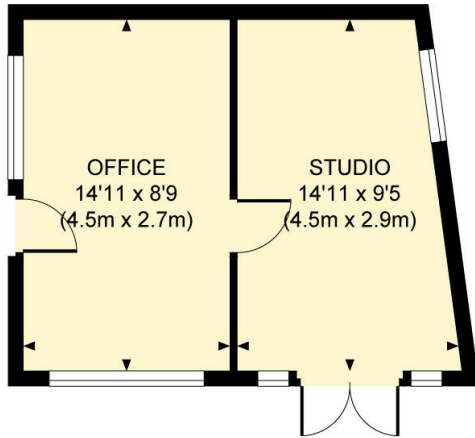
West End Village is a unique setting with its own pub, church, village green, and duck pond along with the renowned Garsons Farm Shop, offering to pick your own fruit and veg, an extensive garden centre and farm shop complete with a coffee shop.

Transport links are excellent, with the station providing a fast and frequent service to London Waterloo. The A3 provides direct access to central London, the M25 and the South.

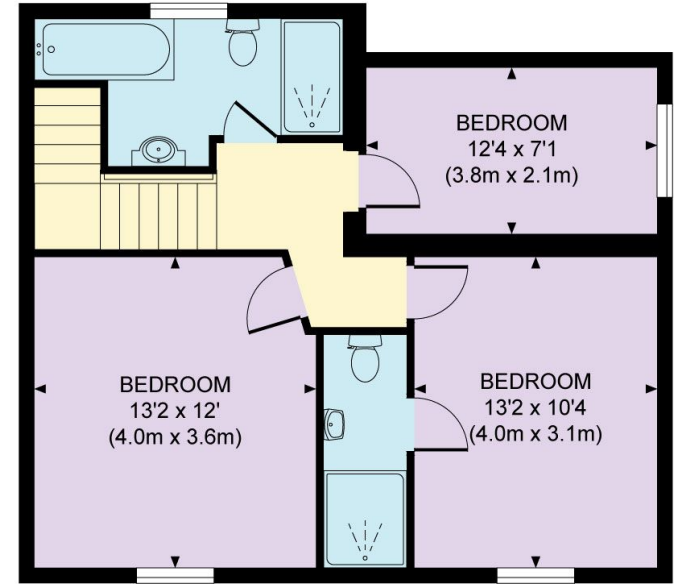
Schooling in the area is superb, with many private and state schools in the immediate area, including Claremont Fan Court, Shrewsbury House, Rowan, Esher Church School.







Approximate Gross Internal Area
1416 sq ft / 131.6 sq m
Approximate Gross Internal Area Outbuildings
260 sq ft / 24.2 sq m
Total Gross Internal Area 1676 sq ft / 155.7 sq m



FIRST FLOOR

Knight Frank

Esher

47 High Street

Esher

KT10 9RL

knightfrank.co.uk

We would be delighted to tell you more

Adam Burlison

01372 464496

adam.burlison@knightfrank.com

Maisie Bywater

01372 230466

maisie.bywater@knightfrank.com



Fixtures and fittings: A list of the fitted carpets, curtains, light fittings and other items fixed to the property which are included in the sale (or may be available by separate negotiation) will be provided by the Seller's Solicitors.

Important Notice: 1. Particulars: These particulars are not an offer or contract, nor part of one. You should not rely on statements by Knight Frank LLP in the particulars or by word of mouth or in writing ("information") as being factually accurate about the property, its condition or its value. Neither Knight Frank LLP nor any joint agent has any authority to make any representations about the property, and accordingly any information given is entirely without responsibility on the part of the agents, seller(s) or lessor(s). 2. Photos, Videos etc: The photographs, property videos and virtual viewings etc. show only certain parts of the property as they appeared at the time they were taken. Areas, measurements and distances given are approximate only. 3. Regulations etc: Any reference to alterations to, or use of, any part of the property does not mean that any necessary planning, building regulations or other consent has been obtained. A buyer or lessee must find out by inspection or in other ways that these matters have been properly dealt with and that all information is correct. 4. VAT: The VAT position relating to the property may change without notice. 5. To find out how we process Personal Data, please refer to our Group Privacy Statement and other notices at <https://www.knightfrank.com/legals/privacy-statement>.

Particulars dated July 2023. Photographs and videos dated July 2023.

All information is correct at the time of going to print. Knight Frank is the trading name of Knight Frank LLP. Knight Frank LLP is a limited liability partnership registered in England and Wales with registered number OC305934. Our registered office is at 55 Baker Street, London W1U 8AN. We use the term 'partner' to refer to a member of Knight Frank LLP, or an employee or consultant. A list of members names of Knight Frank LLP may be inspected at our registered office. If you do not want us to contact you further about our services then please contact us by either calling 020 3544 0692, email to marketing.help@knightfrank.com or post to our UK Residential Marketing Manager at our registered office (above) providing your name and address.