

West Grove, Hersham, Surrey, KT12





A Stunning Double Fronted Georgian Property

A stunning double fronted Georgian property of local historical interest situated in South West facing grounds and ideally located within walking distance of Walton-on-Thames station and Hersham Village.

The property retains an abundance of original features and period detailing from the era including parapet walls on the roof, decorative bay windows, fireplaces, friezes, coving and a bell tower on the roof and generous room proportions throughout.

The property has four principal reception areas including impressive drawing and dining rooms with high ceilings, feature fireplaces and access onto the generous size garden as well as an impressive open plan entrance hall with sitting/dining area. The fourth reception room works as a study or playroom and is accessed from the kitchen. The kitchen/breakfast room features a stunning Tom Howley kitchen with stylish marble worktops.

The first floor has four well proportioned bedrooms all with feature fireplaces with an en-suite to the principal room and a separate family bathroom.

The property has historical links to Herbert Hoover and features a blue plaque on the front wall. The Hoovers were known to have lived here in 1902, many years before becoming the 31st President of the United States of America in 1929. Herbert Hoover amassed a fortune from gold mining and in 1901 was cited as the richest man of his age in the world. In his memoirs, he referred to his stay "My wife searched out a small country house at Walton-on-Thames" and a footnote added the ironic twist "curiously it was known as The White House".

The village of Hersham is within 0.5 miles and offers a Waitrose supermarket, Costa coffee and a village green.

The larger towns of Walton-on-Thames, Weybridge, Esher and Cobham are all easily accessible. Along with the picturesque village of West End with its own pub, sports club, village green and pond and the renowned Garson's Farm, perfect for fruit picking, coffee or lunch.

Walton-on-Thames town centre is conveniently located and offers an excellent mix of shops, restaurants and coffee shops including Starbucks and Costa, Wagamama's along with an Everyman cinema. The train station is located within 0.3 miles of the property and provides a regular service to London Waterloo.

Schooling in the area is superb with an excellent selection of both private and state schools including Notre Dame, Feltonfleet, St George's College.

Council Tax Band: H

Tenure: Freehold

Local Authority: Elmbridge Borough Council





Location description

Walton-on-Thames station 0.3 miles
Hersham village 0.75 miles
Walton-on-Thames town centre 1 mile
Weybridge High Street 2.75 miles
Cobham 4.5miles
Kingston 7miles
Guildford 13 miles
Central London 20 miles

All distances and times are approximate.

Please check catchment areas and entry requirements for all schools listed.









THE WHITE HOUSE

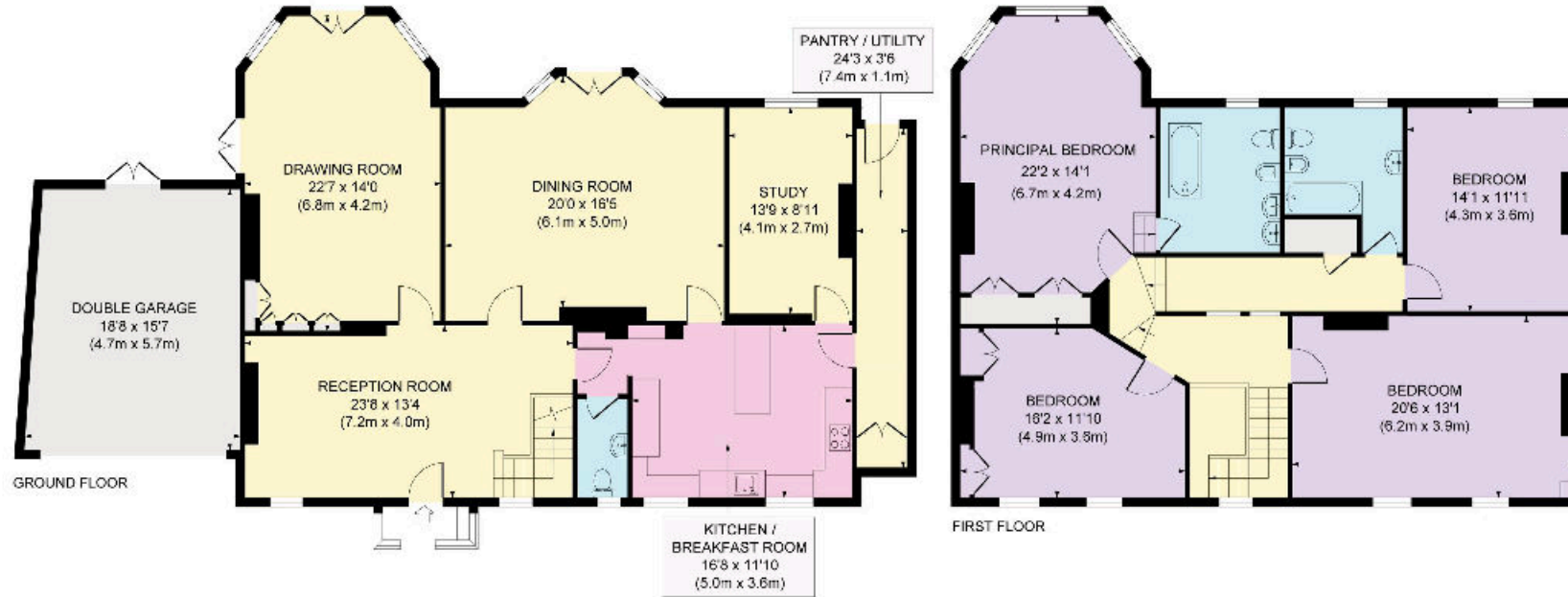
100

Approximate Gross Internal Area

Main House 2706 sq. ft. / 251.36 sq. m

Garage 277 sq. ft. / 25.76 sq. m

Total 2983 sq. ft. / 277.14 sq. m



Knight Frank

This plan is for layout guidance only. Not drawn to scale unless stated. While every care is taken in the preparation of this plan, please check all dimensions, shapes and complete bearings before making decisions related to them.

47 High Street
Esher
Surrey KT10 9RL
[knightfrank.co.uk](https://www.knightfrank.co.uk)

We would be delighted to tell you more

Adam Burlison
01372 239 984
adam.burlison@knightfrank.com

Maisie Bywater
01372 885661
maisie.bywater@knightfrank.com



Fixtures and fittings: A list of the fitted carpets, curtains, light fittings and other items fixed to the property which are included in the sale (or may be available by separate negotiation) will be provided by the Seller's Solicitors.

Important Notice: 1. Particulars: These particulars are not an offer or contract, nor part of one. You should not rely on statements by Knight Frank LLP in the particulars or by word of mouth or in writing ("Information") as being factually accurate about the property, its condition or its value. Neither Knight Frank LLP nor any joint agent has any authority to make any representations about the property, and accordingly any information given is entirely without responsibility on the part of the agents, seller(s) or lessor(s). 2. Photos, Videos etc: The photographs, property videos and virtual viewings etc. show only certain parts of the property as they appeared at the time they were taken. Areas, measurements and distances given are approximate only. 3. Regulations etc: Any reference to alterations to, or use of, any part of the property does not mean that any necessary planning, building regulations or other consent has been obtained. A buyer or lessee must find out by inspection or in other ways that these matters have been properly dealt with and that all that information is correct. 4. VAT: The VAT position relating to the property may change without notice. 5. To find out how we process Personal Data, please refer to our Group Privacy Statement and other notices at <https://www.knightfrank.com/legals/privacy-statement>. Particulars dated December 2024. Photographs and videos dated December 2024.

Knight Frank is the trading name of Knight Frank LLP. Knight Frank LLP is a limited liability partnership registered in England and Wales with registered number OC305934. Our registered office is at 55 Baker Street, London W1U 8AN where you may look at a list of members' names. If we use the term 'partner' when referring to one of our representatives, that person will either be a member, employee, worker or consultant of Knight Frank LLP and not a partner in a partnership. If you do not want us to contact you further about our services then please contact us by either calling 020 3544 0692, email to marketing.help@knightfrank.com or post to our UK Residential Marketing Manager at our registered office (above) providing your name and address.