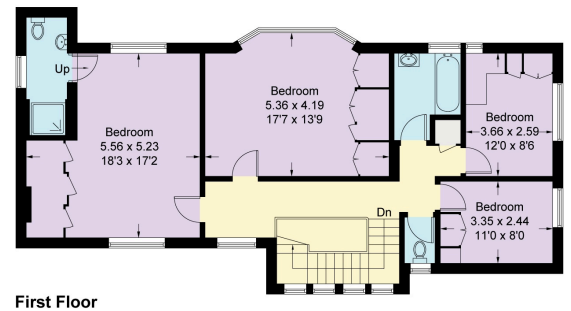
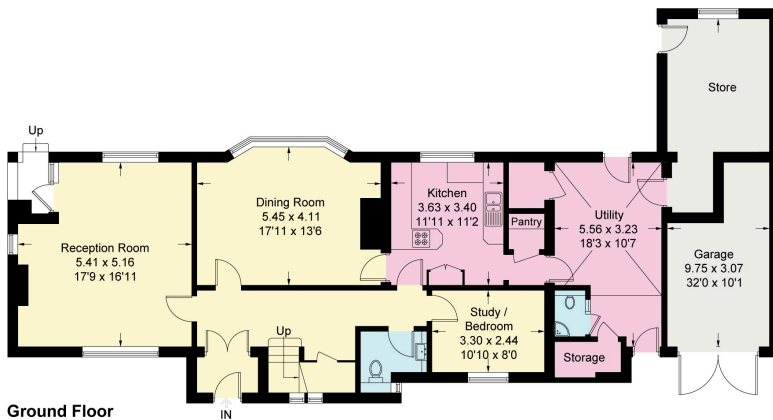


## The Mount, KT10

Approximate Gross Internal Area = 216.2 sq m / 2327 sq ft  
 Garage = 30.2 sq m / 325 sq ft  
 Total = 246.4 sq m / 2652 sq ft



Measured in accordance with RICS Code of Measuring Practice. To be used for identification and guidance purposes only.  
 Whilst every care is taken in the preparation of this plan, please check all dimensions, shapes and compass bearings before making any decisions reliant upon them.  
[www.london58.com](http://www.london58.com) © 2025 [hello@london58.com](mailto:hello@london58.com)