



BROOMHILL COURT

Esher Close, Esher, KT10



A MEWS HOUSE IN A GATED DEVELOPMENT

A three bedroom, three bathroom contemporary mews house, in a gated development within walking distance to Esher High Street.



3



3



1

EPC

C

Local Authority: Elmbridge Borough Council

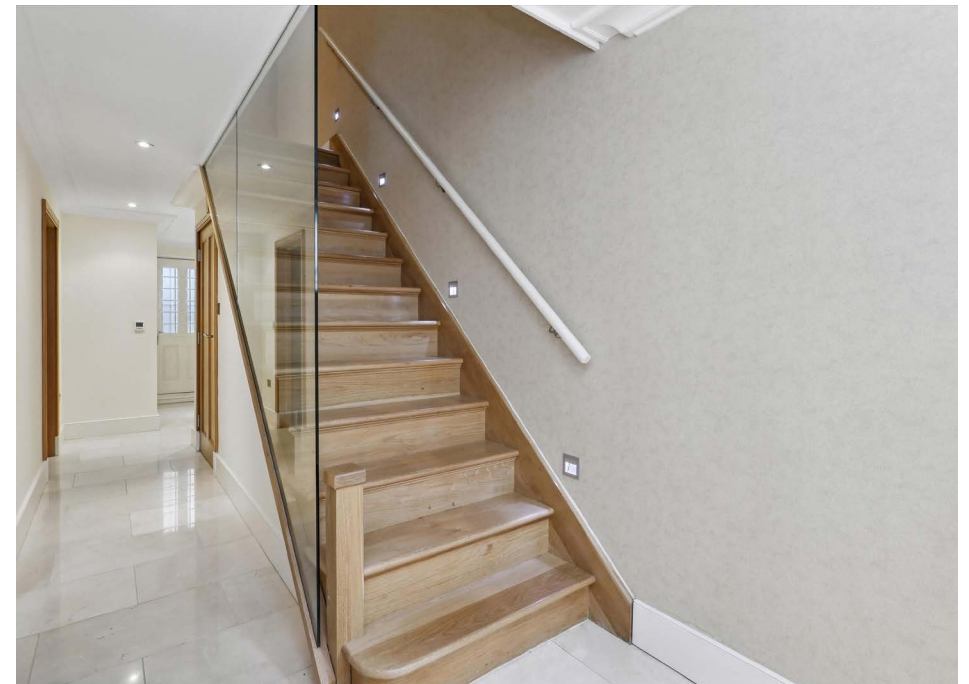
Council Tax band: G

Tenure: Freehold



- Private gated road
- 350 yards to Esher High Street and Waitrose
- Set within a gated development
- Private garden
- Communal swimming pool and gym
- Two allocated parking spaces

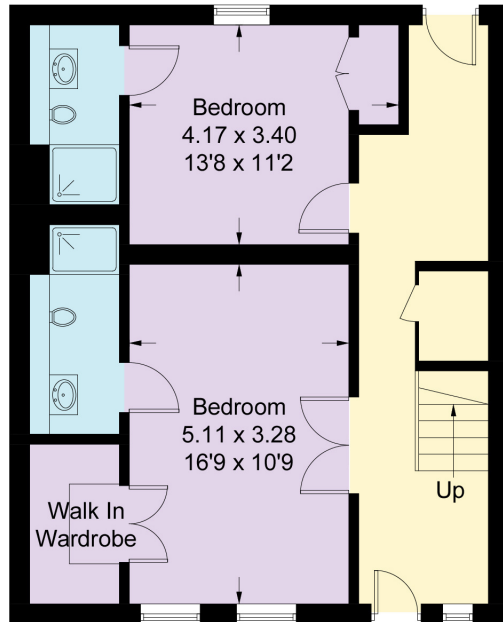
Located within a short distance of Esher high street which has an excellent range of restaurants and shops including Waitrose, Gail's Bakery, Fego, Cote, Giggling Squid, The Good Earth an Everyman Cinema along with a number of coffee shops and pubs. Communication links are excellent with the station providing a fast and frequent service to London Waterloo. The A3 provides direct access to central London, the M25



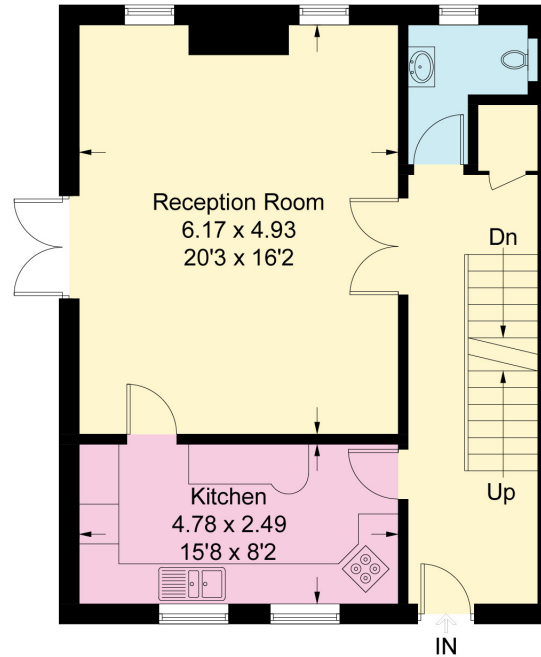


Esher Close, KT10

Approximate Gross Internal Area = 173.6 sq m / 1869 sq ft



Lower Ground Floor



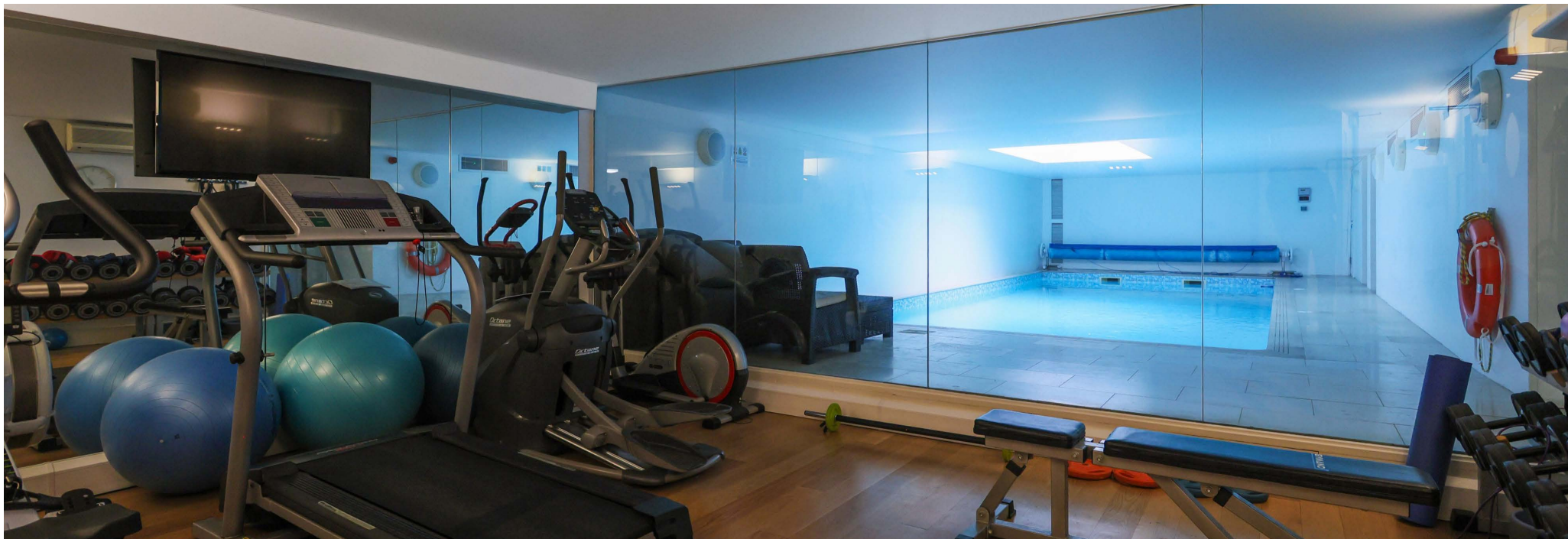
Ground Floor



First Floor

Approximate Gross Internal Area = 168.53 sq m / 1,814 sq ft

This plan is for layout guidance only. Not drawn to scale unless stated. Windows and door openings are approximate. Whilst every care is taken in the preparation of this plan, please check all dimensions, shapes and compass bearings before making any decisions reliant upon them. (ID767266)



Maisie Bywater

+44 137 223 0466

maisie.bywater@knightfrank.com

Knight Frank Esher

47 High St, Esher KT10 9RL



[knightfrank.co.uk](https://www.knightfrank.co.uk)

Your partners in property

1. Particulars: These particulars are not an offer or contract, nor part of one. You should not rely on statements given by Knight Frank in the particulars, by word of mouth or in writing ("information") as being factually accurate about the property, its condition or its value. Neither Knight Frank nor any joint agent has any authority to make any representations about the property, and accordingly any information given is entirely without responsibility on the part of Knight Frank. 2. Material Information: Please note that the material information is provided to Knight Frank by third parties and is provided here as a guide only. While Knight Frank has taken steps to verify this information, we advise you to confirm the details of any such material information prior to any offer being submitted. If we are informed of changes to this information by the seller or another third party, we will use reasonable endeavours to update this as soon as practical. 3. Photos, Videos etc: The photographs, property videos and virtual viewings etc. show only certain parts of the property as they appeared at the time they were taken. Areas, measurements and distances given are approximate only. 4. Regulations etc: Any reference to alterations to, or use of, any part of the property does not mean that any necessary planning, building regulations or other consent has been obtained. A buyer must find out by inspection or in other ways that these matters have been properly dealt with and that all information is correct. 5. Fixtures and fittings: A list of the fitted carpets, curtains, light fittings and other items fixed to the property which are included in the sale (or may be available by separate negotiation) will be provided by the Seller's Solicitors. 6. VAT: The VAT position relating to the property may change without notice. 7. To find out how we process Personal Data, please refer to our Group Privacy Statement and other notices at <https://www.knightfrank.com/legals/privacy-statement>.

Particulars dated December 2025. Photographs and videos dated July 2024. All information is correct at the time of going to print. Knight Frank is the trading name of Knight Frank LLP. Knight Frank LLP is a limited liability partnership registered in England and Wales with registered number OC305934. Our registered office is at 55 Baker Street, London W1U 8AN. We use the term 'partner' to refer to a member of Knight Frank LLP, or an employee or consultant. A list of members names of Knight Frank LLP may be inspected at our registered office. If you do not want us to contact you further about our services then please contact us by either calling 020 3544 0692, email to marketing.help@knightfrank.com or post to our UK Residential Marketing Manager at our registered office (above) providing your name and address.

