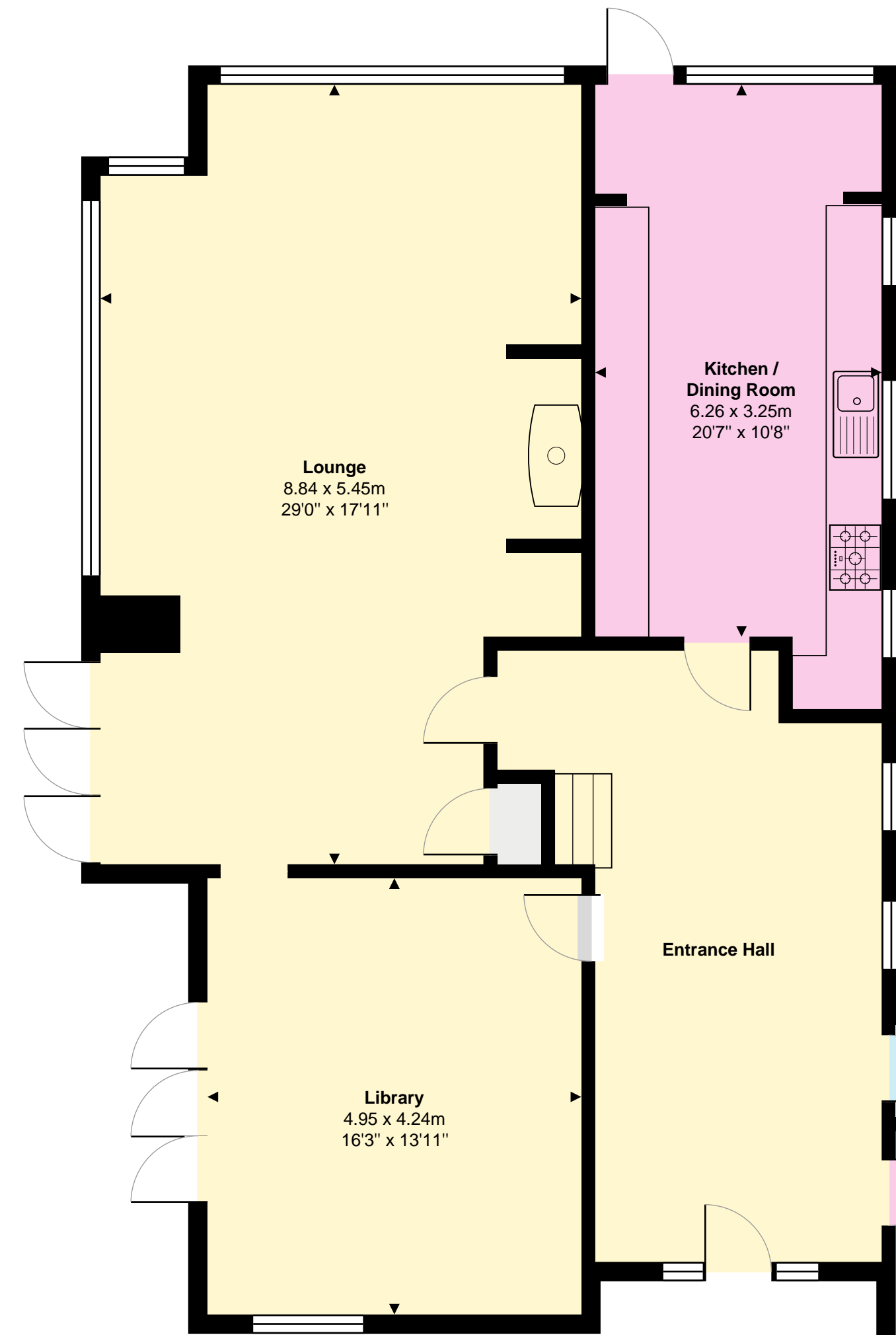
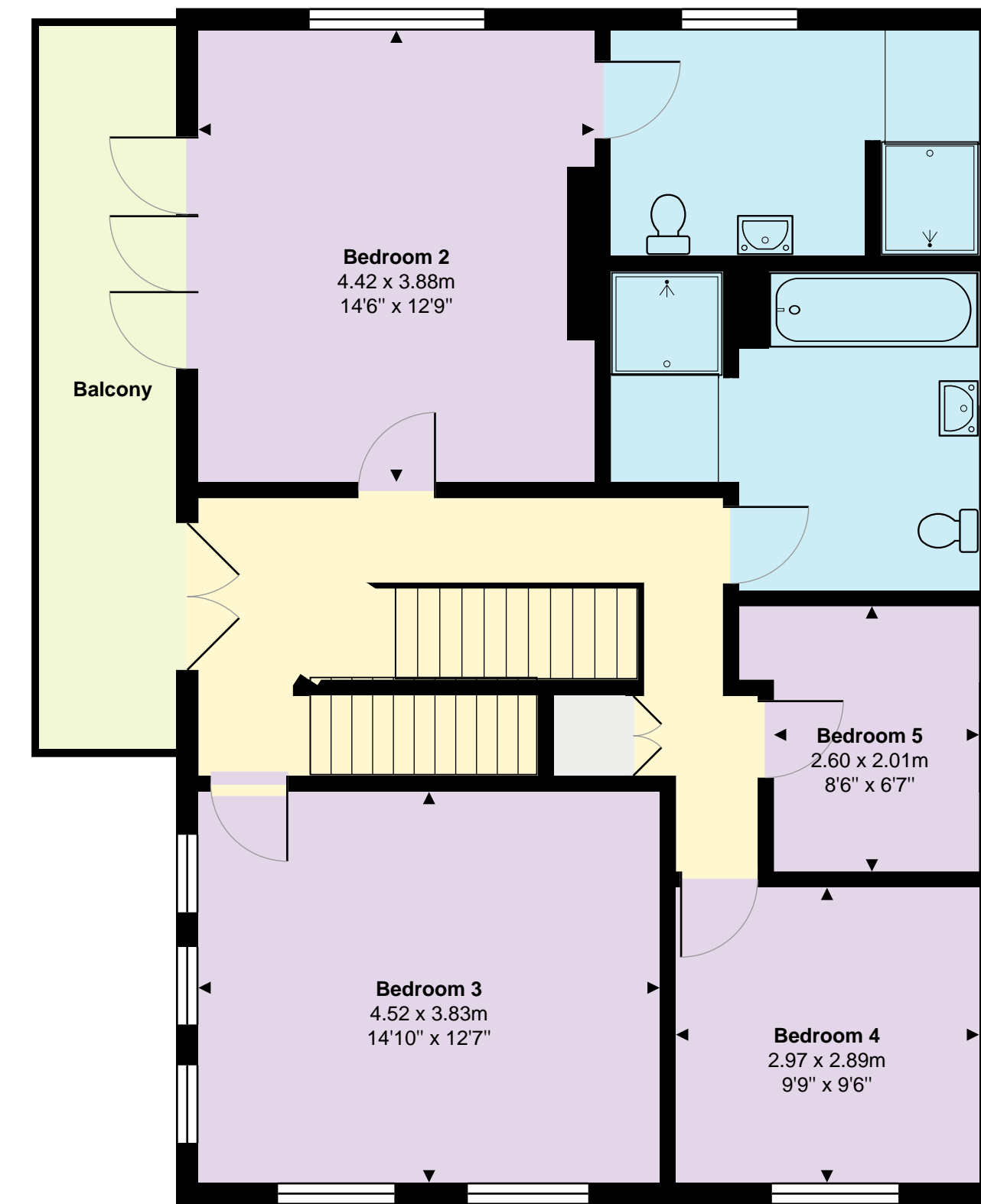


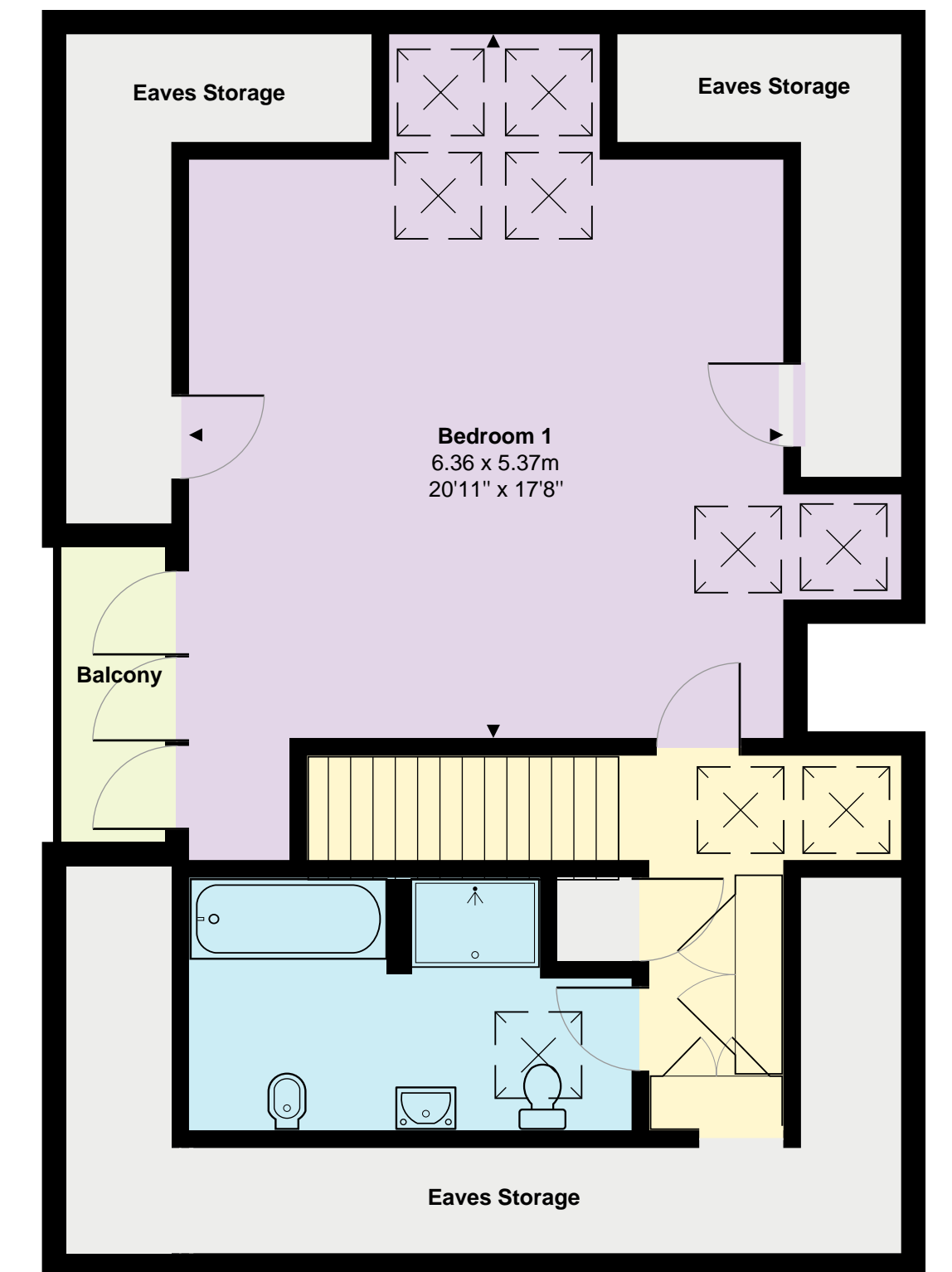
Deepcombe House  
Woodhouse Lane  
Uplyme  
Lyme Regis  
Devon  
DT7 3SX



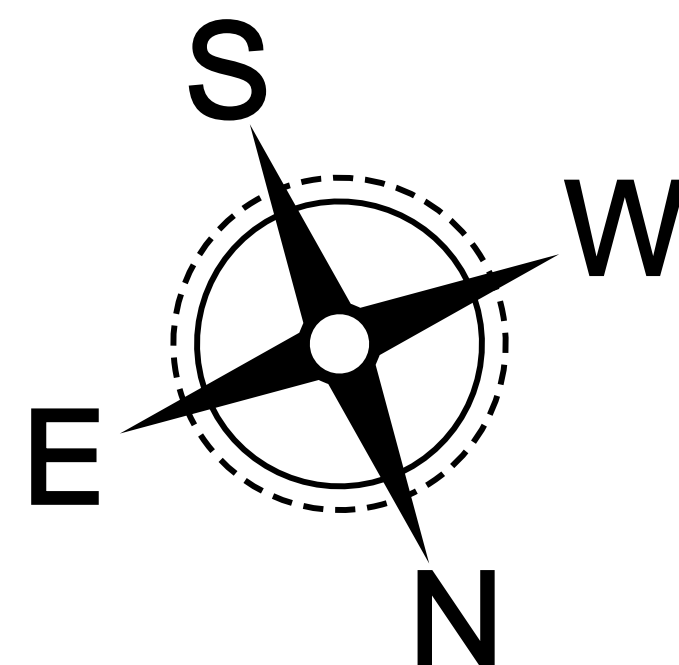
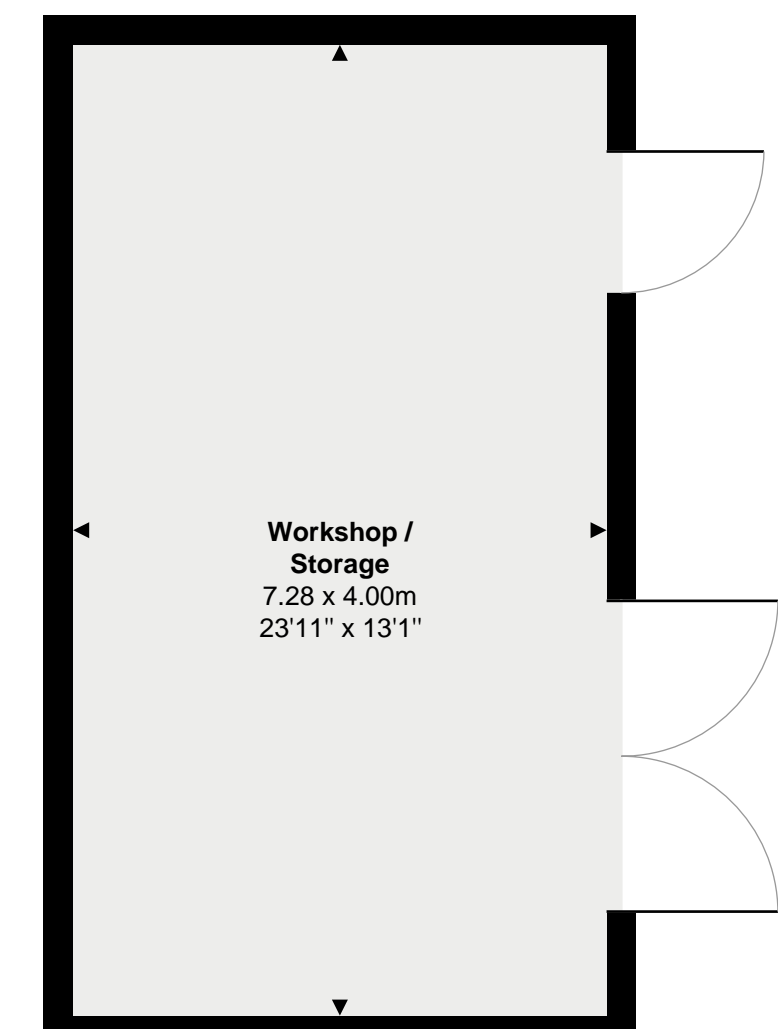
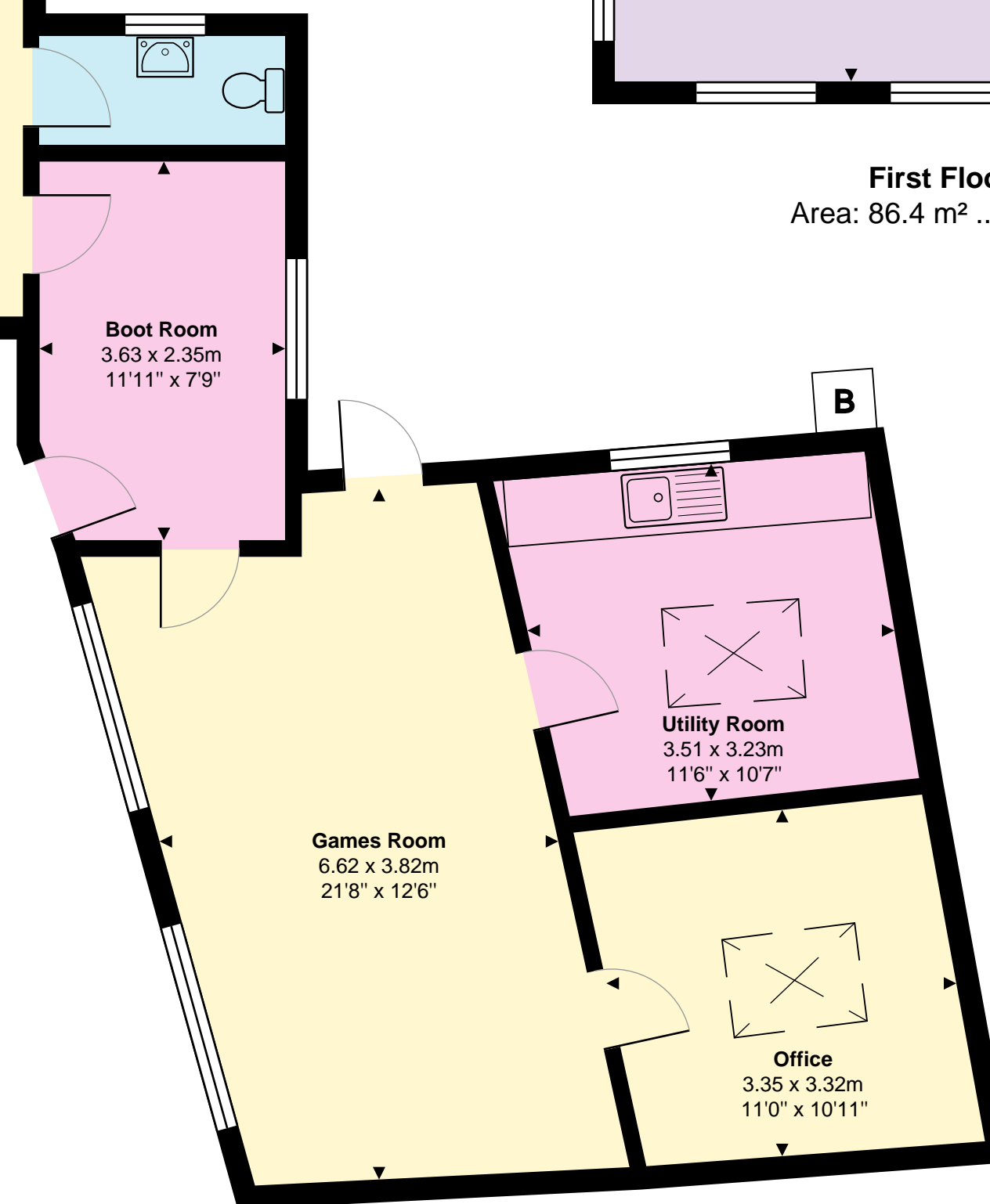
Ground Floor  
Area: 173.6 m<sup>2</sup> ... 1868 ft<sup>2</sup>



First Floor  
Area: 86.4 m<sup>2</sup> ... 930 ft<sup>2</sup>



Second Floor  
Area: 51.3 m<sup>2</sup> ... 552 ft<sup>2</sup>



**Total Area: 311.3 m<sup>2</sup> ... 3350 ft<sup>2</sup> (excluding outbuildings and eaves storage)**

This floor plan is provided for representation purposes only, whilst every attempt has been made to ensure their accuracy the measurements of windows, doors and rooms are approximate and should be used as such by prospective purchasers. No responsibility will be taken for any errors, omission or mis-statement. The services, systems and appliances mentioned have not been tested and cannot verify that they are in working order.