



The Vale House, Slapton, Devon





An outstanding home in a **discreet location** in the heart of the village with superb gardens and within easy reach of the sea.

Summary of accommodation

Ground Floor

Entrance hall | Drawing room | Dining room | Sitting room | Kitchen/breakfast room | Utility
Lobby | WC | Lean-to

First Floor

Landing | Three bedrooms | Two bathrooms | Further bedroom/study

Outbuildings

Garage/workshop | Garden store

Distances

Slapton beach 0.5 miles, Dartmouth 6 miles, Totnes 13.1 miles, London Paddington 2 hours 40 mins
(All distances and times are approximate)



Knight Frank Exeter
19 Southernhay East
Exeter
EX1 1QD
knightfrank.co.uk

Mark Proctor
01392 423111
mark.proctor@knightfrank.com



Situation

The village of Slapton is one of the prettiest coastal villages in the South Hams and has a thriving local community, with two excellent pubs (both with restaurants), a well-stocked general store, village hall, chapel, 13th century church and historic monastic tower. There are beaches at Slapton Sands and Blackpool Sands and nearby is the internationally famous Slapton Ley Nature Reserve with its extensive lake, woodland walks and Field Studies Centre.

The market town of Kingsbridge is at the head of the Salcombe estuary with an excellent range of shops and local facilities including a health centre/ cottage hospital, an outstanding secondary school and a sports centre.

The sailing town of Salcombe, with its wonderful beaches and many shops and boutiques, is just 14 miles away. Steeped in history is Dartmouth (6 miles) on the River Dart with its world famous Royal Regatta and Naval College. The town offers interesting architecture and a dynamic range of modern and quirky shops, galleries and eateries.





Totnes is a bustling market town full of interest and with a range of independent shops and recreational facilities. The town is one of Devon's gems, full of colour and character that stems from a rich cultural, historical and archaeological heritage. The facilities include a hospital, a wide range of good local schools, two supermarkets, interesting range of independent shops and galleries together with riverside walks, the Guild Hall, churches and its very own Norman Castle.

There is a mainline railway station at Totnes connecting to London Paddington and the A38 Devon expressway is approximately 13 miles away (South Brent), allowing speedy access to the cities of Exeter and Plymouth and the country beyond.

The property

The Vale House is nestled discreetly in the heart of Slapton. This distinguished property, with some Edwardian additions, boasts an array of period features, offering a quintessential charm without the constraints of being listed. Situated within walking distance of the sea and beach, this residence seamlessly blends classic elegance with comfort.



The well-maintained house features a spacious 2/3 acre south-facing garden, adorned with magnificent mature magnolias, lush fruit trees, raised beds, a new greenhouse and a useful garden outhouse/shed, creating a picturesque and calm retreat. There are also beautiful views from the garden towards the church spire, village houses and the surrounding countryside.

Ample parking and a separate garage ensure convenience, while the interior delights with a generous entrance hall which is approached via an attractive portico. The inviting kitchen breakfast room lies at the heart of the home with an electric AGA, a separate utility area, and a conservatory. The family room, adorned with double doors leads to the garden and patio area which is perfect for al fresco dining. The sitting room and separate dining room offer further versatile spaces for relaxing and entertaining guests.

The inviting sitting room, accentuated by bookshelves and a beautiful marble fireplace, exudes warmth and sophistication. Upstairs, the property features four bedrooms, including an outstanding dual-aspect principal bedroom boasting serene garden views. Two well-equipped family bathrooms complete the accommodation. The whole property is flooded with natural light through large sash windows and also benefits from great ceiling height giving a real sense of volume to The Vale House.



Services

Mains water, electricity and drainage.

Fixtures and fittings

All items usually known as tenant's fixtures and fittings whether mentioned or not in these particulars together with all items of equipment and garden statuary are excluded from the sale but some may be available by separate negotiation.

Viewing

Strictly by appointment only with agents Knight Frank Tel: 01392 423111

Directions (Postcode TQ7 2QT)

From M5 continue South on A38 to Exeter and Plymouth. 25 miles south of Exeter take the exit that directs you to Kingsbridge (Dartington and Staverton also appear). At the top of the slip take the left to Kingsbridge, Dartington, Totnes. Continue on to Dartington, passing the Cider Press Centre on your left. As you approach Totnes keep right and take the right turn (A381) at the traffic lights to Kingsbridge. Continue along the A381 through the villages of Harbertonford and Halwell and passing the BP garage on your left. Just after the brow of the hill fork left and head towards Slapton. Continue on this road for about 5.5 miles and then fork into Slapton Village. Continue to the bottom of Prospect Hill passing the pub on your right and take a right. Continue for short distance to the bottom of the hill and The Vale House is the first house on the right down a discreet lane on your left-hand side.

Property information

Tenure: Freehold

Local Authority: South Hams District Council

Council Tax: Band F

EPC Rating: E

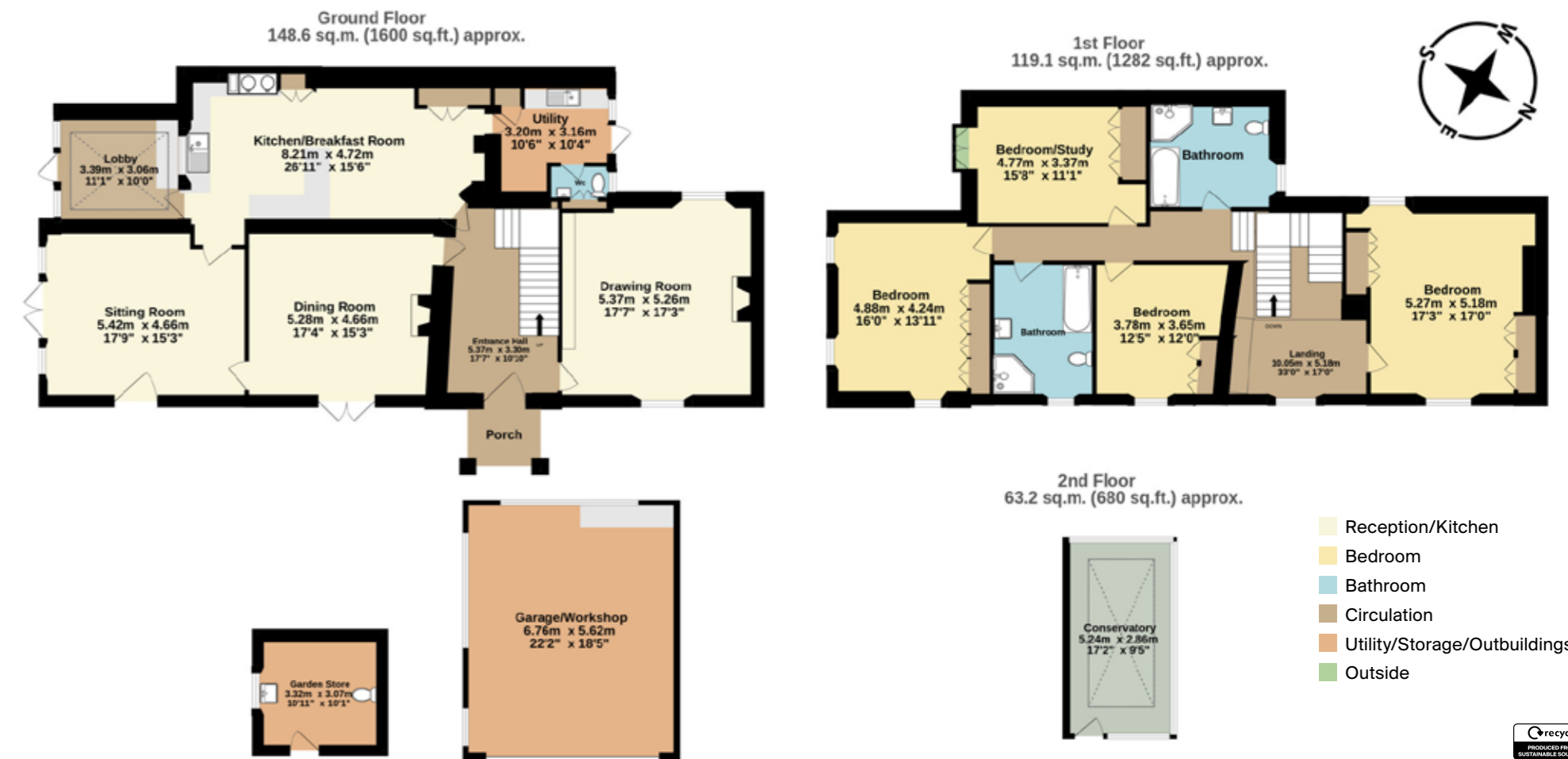
Guide Price: £1,500,000



Approximate Gross Internal Floor Area

330.9 sq m (3562 sq ft)

This plan is for guidance only and must not be relied upon as a statement of fact. Attention is drawn to the Important Notice on the last page of the text of the Particulars.



Fixtures and fittings: A list of the fitted carpets, curtains, light fittings and other items fixed to the property which are included in the sale (or may be available by separate negotiation) will be provided by the Seller's Solicitors.

Important Notice: 1. Particulars: These particulars are not an offer or contract, nor part of one. You should not rely on statements by Knight Frank LLP in the particulars or by word of mouth or in writing ("information") as being factually accurate about the property, its condition or its value. Neither Knight Frank LLP nor any joint agent has any authority to make any representations about the property, and accordingly any information given is entirely without responsibility on the part of the agents, seller(s) or lessor(s). 2. Photos, Videos etc: The photographs, property videos and virtual viewings etc. show only certain parts of the property as they appeared at the time they were taken. Areas, measurements and distances given are approximate only. 3. Regulations etc: Any reference to alterations to, or use of, any part of the property does not mean that any necessary planning, building regulations or other consent has been obtained. A buyer or lessee must find out by inspection or in other ways that these matters have been properly dealt with and that all information is correct. 4. VAT: The VAT position relating to the property may change without notice. 5. To find out how we process Personal Data, please refer to our Group Privacy Statement and other notices at <https://www.knightfrank.com/legals/privacy-statement>.

Particulars dated June 2024. Photographs and videos dated June 2024.

All information is correct at the time of going to print. Knight Frank is the trading name of Knight Frank LLP. Knight Frank LLP is a limited liability partnership registered in England and Wales with registered number OC305934. Our registered office is at 55 Baker Street, London W1U 8AN. We use the term 'partner' to refer to a member of Knight Frank LLP, or an employee or consultant. A list of members names of Knight Frank LLP may be inspected at our registered office. If you do not want us to contact you further about our services then please contact us by either calling 020 3544 0692, email to marketing.help@knightfrank.com or post to our UK Residential Marketing Manager at our registered office (above) providing your name and address. Brochure by wordperfectprint.com



