



# UPCOTT HOUSE

Seaton, Devon



# A DISTINCTIVE COASTAL HOME OF SPACE, CHARACTER, AND CHARM

With sea views, landscaped gardens, and versatile living for all generations.

## Summary of accommodation

**Ground Floor:** Open plan kitchen/dining/living room | Utility room

**First Floor:** Principal bedroom | Four further bedrooms

**Outside:** Parking | Garden with terrace and decking

**Annexe:** Two bedrooms, sitting area, kitchen

**In all about 0.89 acres**

**Distances:** Seaton Beach/SW Coastal Path 0.3 mile/6 minute walk, Seaton town centre 0.6 mile, A3052 1.5 miles, Colyton Grammar School 2 miles, Axminster 7 miles (Exeter St. David's 45 minutes & Waterloo 2 hours 43 minutes), Lyme Regis 8 miles, Sidmouth 9 miles, Exeter Airport 18 miles, Exeter city centre 22 miles  
(All distances and times are approximate)

Offers in excess of £1,400,000

## SITUATION

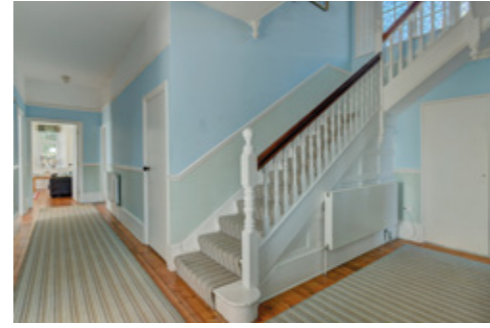
Nestled on the western edge of the small seaside town of Seaton, which is on the Jurassic Coast World Heritage Site and is within the East Devon Area of Outstanding Natural Beauty. The town is situated at the mouth of the River Axe and is surrounded by beautiful countryside and has an excellent selection of shops and local businesses including a large Tesco supermarket plus GP, dental and veterinary surgeries.

Other nearby towns include Sidmouth, which has a Waitrose, the local cultural centre of Lyme Regis and Axminster, which has a railway station on the West of England Main Line with regular, direct services to Waterloo (2 hours 45 minutes) and Exeter St. David's (45 minutes). Other local transport links include the A3052, which is just 1.5 miles away and Exeter Airport, which is just over 30 minutes by car.

The area also has a wide choice of popular state and independent schools including Seaton Primary School and Colyton Grammar School, both Ofsted rated 1 (Outstanding), plus St. John's School, Perrot Hill, The Maynard and Exeter Cathedral School.

## THE PROPERTY

Upcott House is a truly spacious five bedroom family home brimming with character and timeless charm, offering a rare combination of period elegance and modern practicality. Designed with flexibility in mind, the layout flows naturally and provides an inviting setting for both relaxed everyday living and entertaining on a larger scale. Throughout the house, generous proportions and high ceilings create a wonderful sense of space, complemented by large windows that draw in natural light and frame the far-reaching sea views.





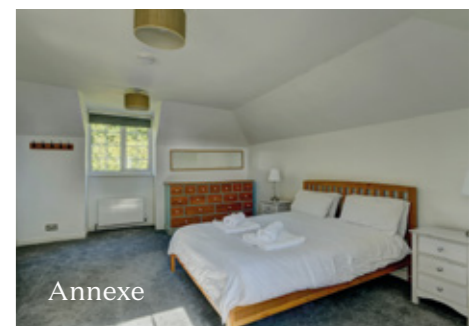
The accommodation is impressively versatile, lending itself perfectly to multi-generational living. A particular asset is the self-contained annexe, which provides an ideal retreat for extended family members, older children seeking independence, or visiting guests. Equally, it presents an attractive option for holiday letting or as a private home office, adding to the property's adaptability.



Annexe



Annexe



Annexe

## Upcott House



Approximate Gross Internal Area  
 Upcott House: 4230 sq ft - 393 sq m  
 The Lodge: 2390 sq ft - 222 sq m

This plan is for layout guidance only. Not drawn to scale unless stated. Windows and door openings are approximate. Whilst every care is taken in the preparation of this plan, please check all dimensions, shapes and compass bearings before making any decisions reliant upon them.



## GARDENS AND GROUNDS

The outside space is equally captivating. Upcott House is set within expansive landscaped gardens, thoughtfully designed to showcase both beauty and practicality. Mature planting, colourful shrubs, and well-kept lawns surround the house, creating a private haven that flows seamlessly into the coastal landscape. Several sun-drenched patios offer idyllic spots for al fresco dining, morning coffee, or evening drinks while watching the ever-changing light on the sea. With its elevated position, the property enjoys sweeping coastal and countryside views, providing a backdrop of serenity in every season.

Upcott House is a rare opportunity to secure a distinctive coastal residence in one of East Devon's most desirable locations - a house that offers space, versatility, and a lifestyle enriched by gardens, sea views, and timeless character.





# PROPERTY INFORMATION

**Tenure:** Freehold

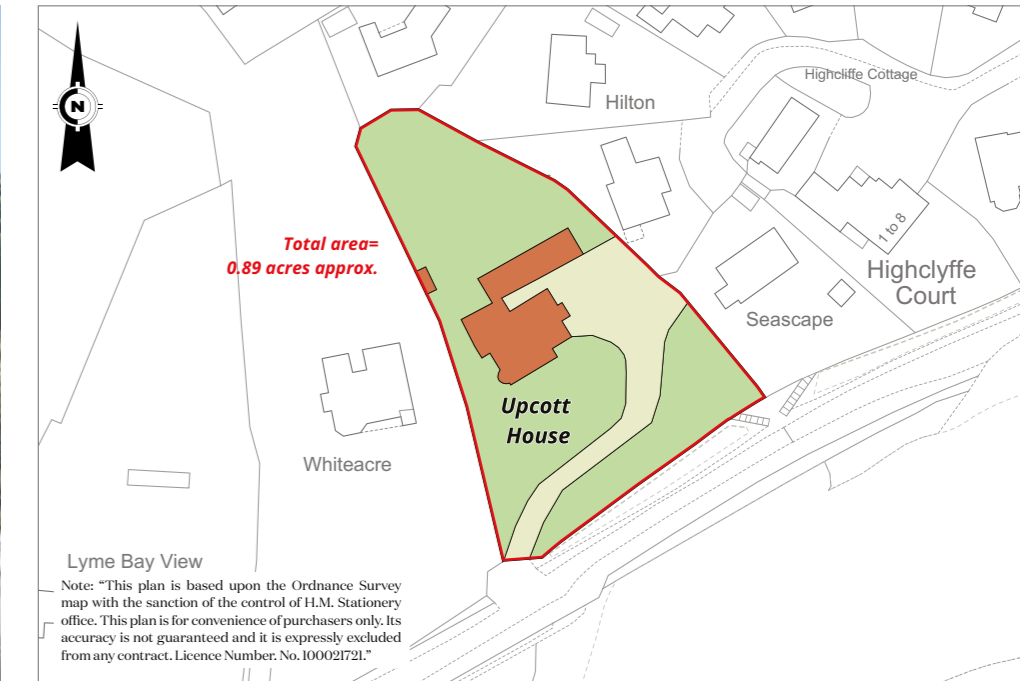
**Services:** Water, electricity and drainage

**Local Authority:** East Devon District Council ([www.eastdevon.gov.uk](http://www.eastdevon.gov.uk))

**Council Tax:** Band TBC

**EPC:** Upcott House – E, The Lodge – D

**Directions:** From Seaton, take the B3174 Beer Road (west) out of the town and continue for about 0.7 mile, turning left on a sharp left hand bend (in a wooded section of the road), onto Old Beer Road. Continue along this road and Upcott House is at the very end of the road up a hill.



**Florence Biss**

01392 423111

[florence.biss@knightfrank.com](mailto:florence.biss@knightfrank.com)

**Knight Frank Exeter**

19 Southernhay East, Exeter

EX1 1QD

[knightfrank.co.uk](http://knightfrank.co.uk)



Your partners in property

1. Particulars: These particulars are not an offer or contract, nor part of one. You should not rely on statements given by Knight Frank in the particulars, by word of mouth or in writing ("information") as being factually accurate about the property, its condition or its value. Neither Knight Frank nor any joint agent has any authority to make any representations about the property, and accordingly any information given is entirely without responsibility on the part of Knight Frank. 2. Material Information: Please note that the material information is provided to Knight Frank by third parties and is provided here as a guide only. While Knight Frank has taken steps to verify this information, we advise you to confirm the details of any such material information prior to any offer being submitted. If we are informed of changes to this information by the seller or another third party, we will use reasonable endeavours to update this as soon as practical. 3. Photos, Videos etc: The photographs, property videos and virtual viewings etc. show only certain parts of the property as they appeared at the time they were taken. Areas, measurements and distances given are approximate only. 4. Regulations etc: Any reference to alterations to, or use of, any part of the property does not mean that any necessary planning, building regulations or other consent has been obtained. A buyer must find out by inspection or in other ways that these matters have been properly dealt with and that all information is correct. 5. Fixtures and fittings: A list of the fitted carpets, curtains, light fittings and other items fixed to the property which are included in the sale (or may be available by separate negotiation) will be provided by the Seller's Solicitors. 6. VAT: The VAT position relating to the property may change without notice. 7. To find out how we process Personal Data, please refer to our Group Privacy Statement and other notices at <https://www.knightfrank.com/legals/privacy-statement>.

Particulars dated November 2025. Photographs and videos dated September 2025. All information is correct at the time of going to print. Knight Frank is the trading name of Knight Frank LLP. Knight Frank LLP is a limited liability partnership registered in England and Wales with registered number OC305934. Our registered office is at 55 Baker Street, London W1U 8AN. We use the term 'partner' to refer to a member of Knight Frank LLP, or an employee or consultant. A list of members names of Knight Frank LLP may be inspected at our registered office. If you do not want us to contact you further about our services then please contact us by either calling 020 3544 0692, email to [marketing.help@knightfrank.com](mailto:marketing.help@knightfrank.com) or post to our UK Residential Marketing Manager at our registered office (above) providing your name and address.

