

Vancouver Lodge, Dadford



An elegant house and annexe with fine period features set in beautiful gardens of over 2 acres.

Summary of accommodation

Two reception rooms | Dining room | Kitchen and breakfast room

Utility | Ground floor cloakroom

Six bedrooms | Three bathrooms

Balcony | Annexe

In all about 2.2 acres

Distances

Silverstone 2.4 miles, Buckingham 4 miles, Milton Keynes 17 miles,

Oxford 30 miles, London 78 miles.

(Distances and times approximate).









Vancouver Lodge

Vancouver Lodge sits at the top of its large and exceptionally private plot enjoying wonderful views.

The house, which is believed to date back to the 18th century, has accommodation set over three floors. The principal bedroom benefits from a dressing room and en suite, whilst there are four further bedrooms and two additional bathrooms. Entered through a generous entrance hall with ornate floor tiles, the ground floor features two formal reception rooms, each with decorative fireplaces, original wood panelling, and bay windows. There is also a formal dining room and generous kitchen and breakfast room.

There is a high quality detached annexe with a large open plan studio or living space on the ground floor with a mezzanine bedroom area on the first.

The partly walled gardens are laid to lawn with mature trees, shrubs and hedging throughout and there is a natural pond. Along driveway approaches the house with space to park several cars.





Situation

Vancouver Lodge is located at the edge of Dadford, a quiet hamlet northwest of Buckingham and bordering the Stowe estate. It is also well placed for access to Silverstone.

There are trains to Euston station from Milton Keynes or to Marylebone via Bicester. Access to London by road is also easy, with nearby junction 10 providing access to the M40. Alternatively, there is nearby access to the M1.

Local schools include Stowe, Akeley Wood, Swanbourne House, the Royal Latin School in Buckingham, Beachborough, Winchester House, and Thornton Girls School. Oxford schools are also within reach, including Lyneham, The Dragon School, Oxford High School, Ashfold Preparatory School and St Edward's.

Property information

Services: LPG, mains electricity and water. Fibre broadband.

Local authority: Aylesbury Vale District Council

Viewings

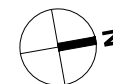
Strictly by appointment through Knight Frank 01865 790077.





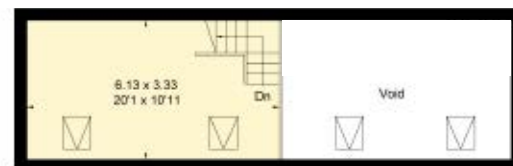




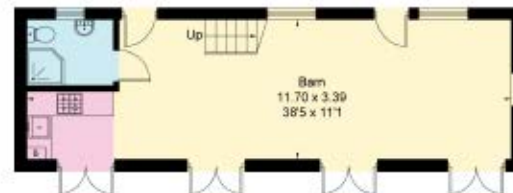


Approximate Gross Internal Floor Area
Main House = 309.9 sq m / 3,336 sq ft
Outbuildings = 100.2 sq m / 1,078 sq ft
Total Area = 410.1 sq m / 4,414 sq ft

This plan is for guidance only and must not be relied upon as a statement of fact. Attention is drawn to the important notice on the last page of the text of the Particulars.



Barn - First Floor



Barn - Ground Floor

(Not Shown In Actual Location / Orientation)



Ground Floor



Second Floor



First Floor

(Not Shown In Actual Location / Orientation)

Knight Frank Oxford
274 Banbury Road
Summertown
Oxford
OX2 7DY
[knightfrank.co.uk](https://www.knightfrank.co.uk)

I would be delighted to tell you more
Samuel Lamb
01865 264856
samuel.lamb@knightfrank.com



Fixtures and fittings: A list of the fitted carpets, curtains, light fittings and other items fixed to the property which are included in the sale (or may be available by separate negotiation) will be provided by the Seller's Solicitors. All those items regarded as tenant's fixtures and fittings, are specifically excluded from any tenancy and will not be evidenced in the inventory. Important Notice: 1. Particulars: These particulars are not an offer or contract, nor part of one. You should not rely on statements by Knight Frank LLP in the particulars or by word of mouth or in writing ("information") as being factually accurate about the property, its condition or its value. Neither Knight Frank LLP nor any joint agent has any authority to make any representations about the property, and accordingly any information given is entirely without responsibility on the part of the agents, seller(s) or lessor(s). 2. Photos, Videos etc: The photographs, property videos and virtual viewings etc. show only certain parts of the property as they appeared at the time they were taken. Areas, measurements and distances given are approximate only. 3. Regulations etc: Any reference to alterations to, or use of, any part of the property does not mean that any necessary planning, building regulations or other consent has been obtained. A buyer or lessee must find out by inspection or in other ways that these matters have been properly dealt with and that all information is correct.

4. VAT: The VAT position relating to the property may change without notice. 5. To find out how we process Personal Data, please refer to our Group Privacy Statement and other notices at <https://www.knightfrank.com/legals/privacy-statement>.

Particulars dated April 2022. Photographs and videos dated April 2022.

Knight Frank is the trading name of Knight Frank LLP. Knight Frank LLP is a limited liability partnership registered in England and Wales with registered number OC305934. Our registered office is at 55 Baker Street, London W1U 8AN where you may look at a list of members' names. If we use the term 'partner' when referring to one of our representatives, that person will either be a member, employee, worker or consultant of Knight Frank LLP and not a partner in a partnership. If you do not want us to contact you further about our services then please contact us by either calling 020 3544 0692, email to marketing.help@knightfrank.com or post to our UK Residential Marketing Manager at our registered office (above) providing your name and address.

