



Moore Park Mews, Fulham SW6

---



# Moore Park Mews

## Fulham SW6

On entering the property you will find a wide entrance hallway, with inviting double doors leading you to an impressive bedroom. There is also a modern shower room finished in marble located on the ground floor.

An architecturally designed staircase leads down to arguably the properties greatest selling point, the vast open plan kitchen/reception room measuring 33'9 x 17'11 with a separate dining space and impressive sliding glass doors out to the garden. The garden has artificial grass making it easy to maintain and a perfect space for al fresco dining. The kitchen features a large kitchen island with plenty of work space and Bosch and Miele appliances. There is also a cleverly configured utility/laundry room with a guest cloakroom to the rear of the property.



**Guide price:** £1,900,000

**Tenure:** Freehold

**Local authority:** Hammersmith and Fulham

**Council tax band:** G

The sleeping accommodation is located on the top floor and consists of a principal bedroom with air conditioning and en suite bathroom and a second double bedroom with en suite bathroom. Both have built-in wardrobes and feature vaulted ceilings creating a wonderful feeling of light and space. The entire property is also finished in a light oak flooring throughout.

## Location

Moore Park Mews is a carefully crafted development of four houses located just off Moore Park Road. The development is gated with controlled access after 9 pm and before 6 am and was the RIBA National Award and the RIBA London Regional Award winner for 2021. The house is located close to Eel Brook Common, which has tennis courts and beautiful open spaces. Fulham Broadway has ample choice of shopping and amenities along with New Kings Road and the Kings Road which are also close by. The nearest underground station is Fulham Broadway which is approximately 0.2 miles away.

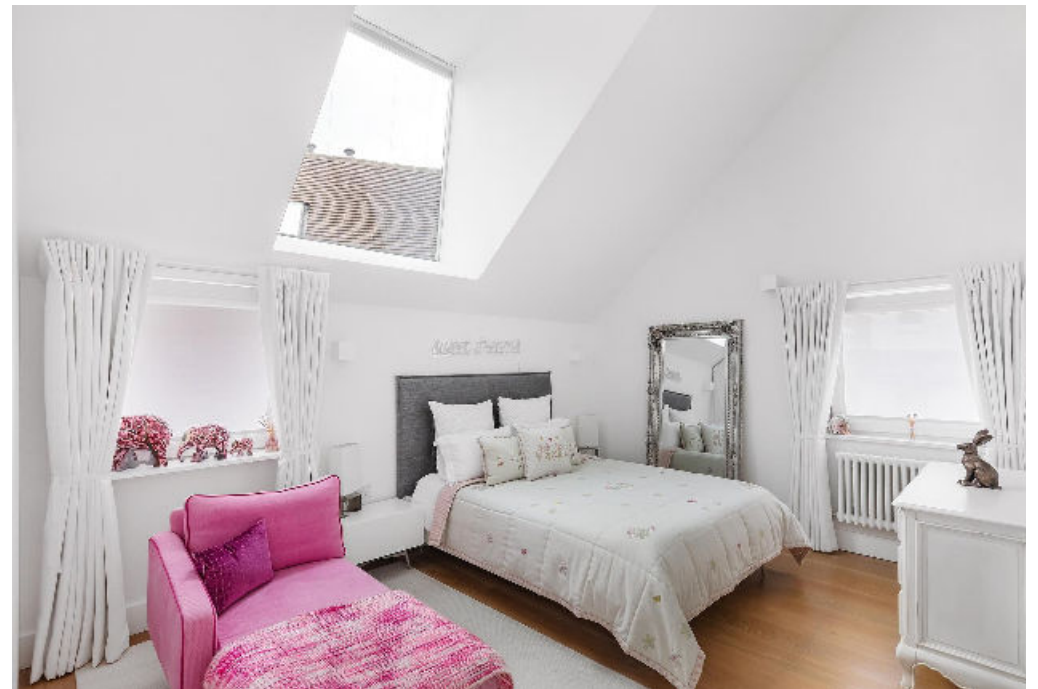
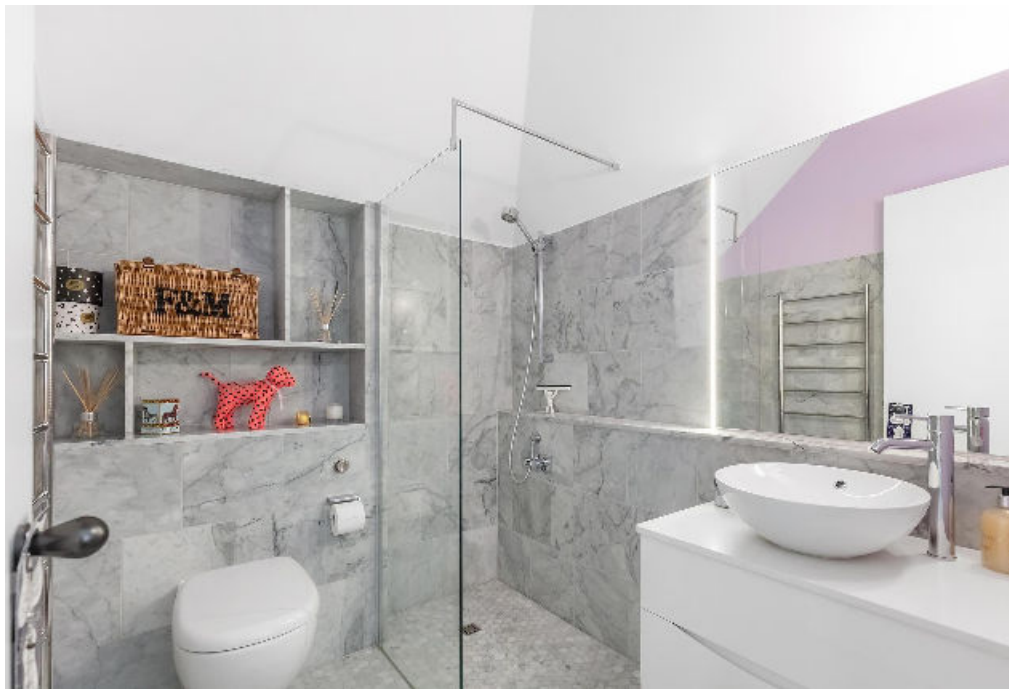






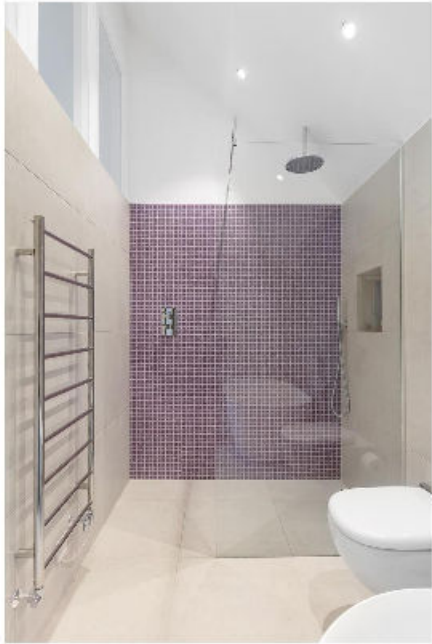


















## Moore Park Mews, SW6

Approximate Gross Internal Area

**148.58 sq m / 1599 sq ft**

This plan is for guidance only and must not be relied upon as a statement of fact. Attention is drawn to the important notice on the last page of the text of the Particulars.

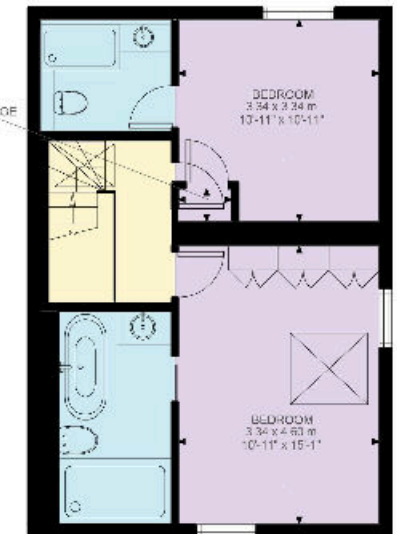
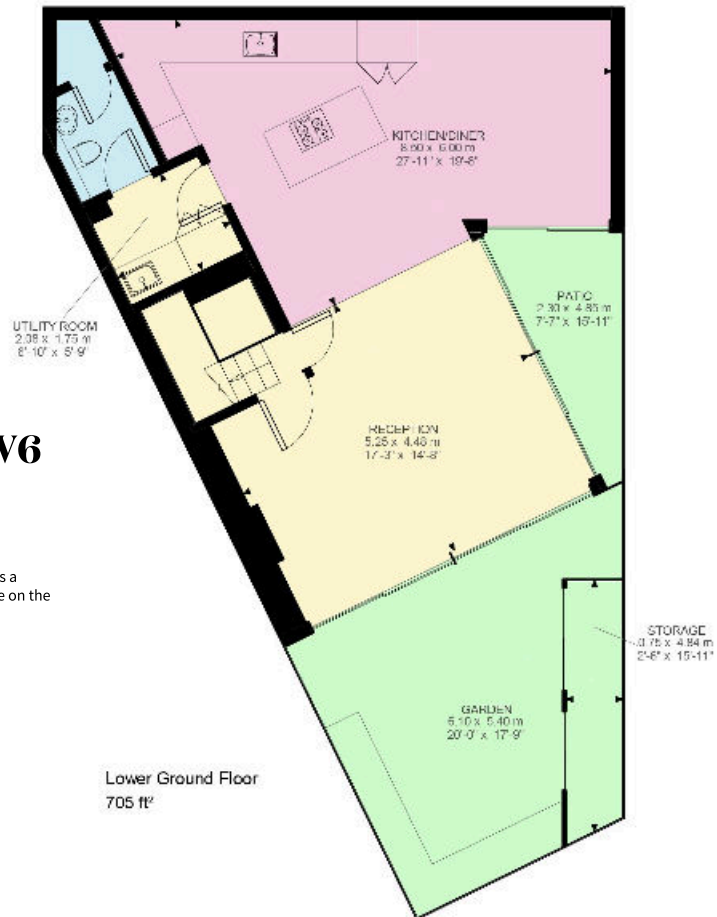


Illustration for identification purposes only. Not to scale.  
Floor Plan Drawn According To RICS Guidelines.

**Knight Frank**

**Fulham**

203 New Kings Road

Fulham

SW6 4SR

[knightfrank.co.uk](https://www.knightfrank.co.uk)

I would be delighted to tell you more

**Sam Thornton**

020 7751 2403

[samuel.thornton@knightfrank.com](mailto:samuel.thornton@knightfrank.com)

Fixtures and fittings: A list of the fitted carpets, curtains, light fittings and other items fixed to the property which are included in the sale (or may be available by separate negotiation) will be provided by the Seller's Solicitors.

Important Notice: 1. Particulars: These particulars are not an offer or contract, nor part of one. You should not rely on statements by Knight Frank LLP in the particulars or by word of mouth or in writing ("information") as being factually accurate about the property, its condition or its value. Neither Knight Frank LLP nor any joint agent has any authority to make any representations about the property, and accordingly any information given is entirely without responsibility on the part of the agents, seller(s) or lessor(s). 2. Photos, Videos etc: The photographs, property videos and virtual viewings etc. show only certain parts of the property as they appeared at the time they were taken. Areas, measurements and distances given are approximate only. 3. Regulations etc: Any reference to alterations to, or use of, any part of the property does not mean that any necessary planning, building regulations or other consent has been obtained. A buyer or lessee must find out by inspection or in other ways that these matters have been properly dealt with and that all information is correct. 4. VAT: The VAT position relating to the property may change without notice. 5. To find out how we process Personal Data, please refer to our Group Privacy Statement and other notices at <https://www.knightfrank.com/legals/privacy-statement>. Particulars dated September 2023. Photographs and videos dated September 2023.

Knight Frank is the trading name of Knight Frank LLP. Knight Frank LLP is a limited liability partnership registered in England and Wales with registered number OC305934. Our registered office is at 55 Baker Street, London W1U 8AN where you may look at a list of members' names. If we use the term 'partner' when referring to one of our representatives, that person will either be a member, employee, worker or consultant of Knight Frank LLP and not a partner in a partnership. If you do not want us to contact you further about our services then please contact us by either calling 020 3544 0692, email to [marketing.help@knightfrank.com](mailto:marketing.help@knightfrank.com) or post to our UK Residential Marketing Manager at our registered office (above) providing your name and address.

