



Harbord Street, Fulham SW6



Harbord Street, Fulham SW6

A remarkable family home nestled within the highly coveted Alphabet Streets near Bishops Park. Meticulously crafted with family life in mind, this property offers a blend of comfort and functionality.

Upon entering, you are greeted by an expansive double reception room, perfect for family living and entertaining guests. The addition of a guest WC and utility area offers convenience and practicality to the ground floor.



Guide price: £2,000,000

Tenure: Freehold

Local authority: Hammersmith & Fulham

Council tax band: G



The heart of the home lies in the fully equipped kitchen situated at the rear of the property, which is bathed in natural light through skylights and bi-fold doors. The fully equipped kitchen provides ample storage and modern appliances, while an additional dining/living area provides versatility and opens out onto the impressive 69 ft south-west facing garden. This outdoor space offers not only a substantial size but also features a studio which is equipped with electricity and currently used as a home office.

Ascending to the first floor, the principal bedroom features an impressive walk-through wardrobe, providing ample storage space and en suite bathroom with separate bath and shower. There is an additional double bedroom complete with en suite bathroom and built-in wardrobes.

On the top floor, two additional bedrooms are accompanied by a separate family bathroom, as well as eaves storage to the front, completing the well-appointed layout of this inviting home.







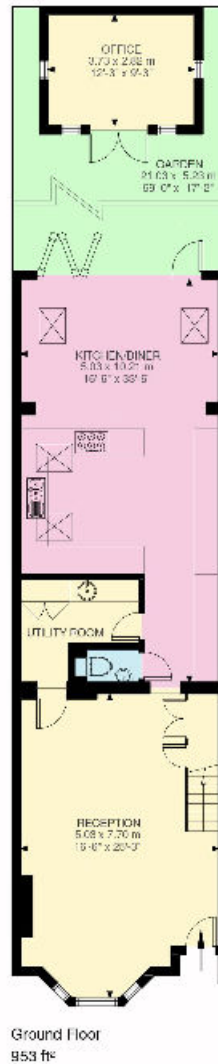
A fantastic four-bedroom house in the popular Bishops Park conservation area.

Harbord Street, Fulham SW6

Harbord Street is a popular tree-lined residential street, close to the green, open spaces of Bishops Park and picturesque riverside walks.

The shops, restaurants and amenities of Parsons Green are within easy reach whilst Putney Bridge and Hammersmith provide additional connectivity to London's vibrant city centre and beyond. The area also benefits from numerous bus routes with nearest bus stop situated on Fulham Palace Road.

Fulham has some of the best schools in London including Lady Margaret's, Fulham Prep and Fulham Boys.



Harbord Street, SW6

Approximate Gross Internal Floor Area: 187.19 SQ M / 2,015 SQ FT (excluding eaves storage)

Inclusive Total Area: 193.45 SQ M / 2,092 SQ FT (eaves storage 6.26 sq m / 67 sq ft)

This plan is for guidance only and must not be relied upon as a statement of fact.
Attention is drawn to the important notice on the last page of the text of the Particulars.

Knight Frank

Fulham

203 New Kings Road

Fulham

SW6 4SR

[knightfrank.co.uk](https://www.knightfrank.co.uk)

We would be delighted to tell you more

Sam Thornton

020 7751 2403

samuel.thornton@knightfrank.com

Arabella Howard-Evans

020 7751 2402

arabella.howardevans@knightfrank.com

Fixtures and fittings: A list of the fitted carpets, curtains, light fittings and other items fixed to the property which are included in the sale (or may be available by separate negotiation) will be provided by the Seller's Solicitors.

Important Notice: 1. Particulars: These particulars are not an offer or contract, nor part of one. You should not rely on statements by Knight Frank LLP in the particulars or by word of mouth or in writing ("information") as being factually accurate about the property, its condition or its value. Neither Knight Frank LLP nor any joint agent has any authority to make any representations about the property, and accordingly any information given is entirely without responsibility on the part of the agents, seller(s) or lessor(s). 2. Photos, Videos etc: The photographs, property videos and virtual viewings etc. show only certain parts of the property as they appeared at the time they were taken. Areas, measurements and distances given are approximate only. 3. Regulations etc: Any reference to alterations to, or use of, any part of the property does not mean that any necessary planning, building regulations or other consent has been obtained. A buyer or lessee must find out by inspection or in other ways that these matters have been properly dealt with and that all that information is correct. 4. VAT: The VAT position relating to the property may change without notice. 5. To find out how we process Personal Data, please refer to our Group Privacy Statement and other notices at <https://www.knightfrank.com/legals/privacy-statement>.

Particulars dated February 2024. Photographs and videos dated February 2024.

All information is correct at the time of going to print. Knight Frank is the trading name of Knight Frank LLP. Knight Frank LLP is a limited liability partnership registered in England and Wales with registered number OC305934. Our registered office is at 55 Baker Street, London W1U 8AN. We use the term 'partner' to refer to a member of Knight Frank LLP, or an employee or consultant. A list of members names of Knight Frank LLP may be inspected at our registered office. If you do not want us to contact you further about our services then please contact us by either calling 020 3544 0692, email to marketing.help@knightfrank.com or post to our UK Residential Marketing Manager at our registered office (above) providing your name and address.

