



Chiddingstone Street, Fulham SW6



Chiddingstone Street, Fulham SW6

A five-bedroom 'long-back' Lion house situated in the heart of the coveted Peterborough Estate, with an impressive 10-foot terrace.

On the ground floor, a captivating double reception room awaits, adorned with two charming fireplaces and ornate central roses. Adjacent lies the stunning kitchen, bathed in natural light streaming through Velux windows, complete with a central island and abundant storage. Leading from the kitchen is a dining room, with double doors opening onto the garden. To the lower ground floor is versatile living space, currently purposed as a family room but equally adaptable to suit your lifestyle, supplemented by a convenient guest WC.



5



3



3



EPC

C

Guide price: £3,200,000

Tenure: Freehold

Local authority: Hammersmith and Fulham

Council tax band: H





Ascending to the first floor, three generously sized bedrooms await, including a principal suite featuring a dressing room and en suite, while the remaining bedrooms are serviced by a second shower room. The top floor presents two additional bedrooms alongside a well-appointed bathroom, and roof terrace with access to convenient eaves storage.

Chiddingstone Street is situated in a sought-after area of Parsons Green with residents enjoying access to an array of green spaces including Parsons Green itself, Eel Brook Common, and local parks such as South Park and Hurlingham Park. There are several excellent schools in the area such as Thomas' Fulham, Parsons Green Prep, Fulham Prep and Lady Margaret School, along with bilingual offerings of L'Ecole Marie D'Orliac and the Fulham Bilingual School. Nurseries in the area include Pippa Pop-Ins and L'Ecole des Petits.

For transport links, Parsons Green underground station (District Line) 0.3 miles away. The area has a number of bus connections to Chelsea, central London, Putney, and Hammersmith, providing travel throughout the city.



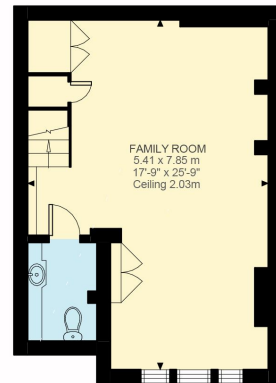


Chiddingstone Street, SW6

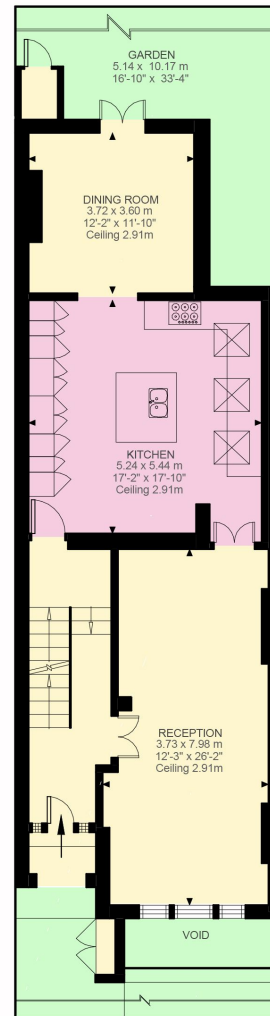
Approximate Gross Internal Area
244.25 sq m / 2,629 sq ft (excludes eaves)

Inclusive Total Area
267.67 sq m / 2,881 sq ft

This plan is for guidance only and must not be relied upon as a statement of fact. Attention is drawn to the important notice on the last page of the text of the Particulars.



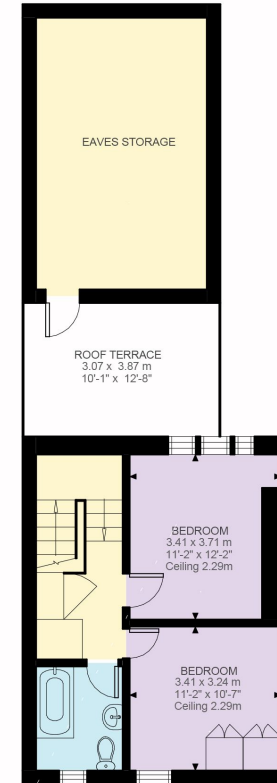
Lower Ground Floor
448 ft²



Ground Floor
894 ft²



First Floor
861 ft²



Second Floor
427 ft²



Knight Frank

Fulham

203 New Kings Road

Fulham

SW6 4SR

knightfrank.co.uk

We would be delighted to tell you more

Arabella Howard-Evans

Joanna Sutherland

020 7751 2402

020 7751 2409

arabella.howardevans@knightfrank.jo.sutherland@knightfrank.com



Fixtures and fittings: A list of the fitted carpets, curtains, light fittings and other items fixed to the property which are included in the sale (or may be available by separate negotiation) will be provided by the Seller's Solicitors.

Important Notice: 1. Particulars: These particulars are not an offer or contract, nor part of one. You should not rely on statements by Knight Frank LLP in the particulars or by word of mouth or in writing ("information") as being factually accurate about the property, its condition or its value. Neither Knight Frank LLP nor any joint agent has any authority to make any representations about the property, and accordingly any information given is entirely without responsibility on the part of the agents, seller(s) or lessor(s). 2. Photos, Videos etc: The photographs, property videos and virtual viewings etc. show only certain parts of the property as they appeared at the time they were taken. Areas, measurements and distances given are approximate only. 3. Regulations etc: Any reference to alterations to, or use of, any part of the property does not mean that any necessary planning, building regulations or other consent has been obtained. A buyer or lessee must find out by inspection or in other ways that these matters have been properly dealt with and that all information is correct. 4. VAT: The VAT position relating to the property may change without notice. 5. To find out how we process Personal Data, please refer to our Group Privacy Statement and other notices at <https://www.knightfrank.com/legals/privacy-statement>.

Particulars dated April 2024. Photographs and videos dated April 2024.

All information is correct at the time of going to print. Knight Frank is the trading name of Knight Frank LLP. Knight Frank LLP is a limited liability partnership registered in England and Wales with registered number OC305934. Our registered office is at 55 Baker Street, London W1U 8AN. We use the term 'partner' to refer to a member of Knight Frank LLP, or an employee or consultant. A list of members names of Knight Frank LLP may be inspected at our registered office. If you do not want us to contact you further about our services then please contact us by either calling 020 3544 0692, email to marketing.help@knightfrank.com or post to our UK Residential Marketing Manager at our registered office (above) providing your name and address.