

A modern kitchen and dining area featuring a large window overlooking a garden. The kitchen has dark wood cabinets, a white marble countertop, and a sink with a chrome faucet. A long white marble island with a sink and two pendant lights is in the foreground. The dining area has a dark wood table and chairs. The floor is made of light-colored wood in a herringbone pattern. A brick wall is on the left, and a large potted plant is in the corner. The ceiling has a skylight and recessed lights.

Alderville Road, Fulham SW6



Alderville Road, Fulham SW6

An incredible and rare fully refurbished four double bedroom home that has been completely remodeled by multiple award-winning architect Jo Cowen situated on this desirable street in Parsons Green.

Alderville Road is a cherry blossom tree lined street that runs south of the New Kings Road by the green spaces of Hurlingham Park. It is well-positioned for the excellent local shops, restaurants, parks, and schools. The closest underground station is 0.3 miles at Parsons Green (District Line) and there are good bus connections that run along the New Kings Road.



Guide price: £2,950,000

Tenure: Freehold

Local authority: Hammersmith and Fulham

Council tax band: G







Arranged over four floors this impressive home comprises principal suite with dressing room and en suite bathroom, three further double bedrooms, two further bathrooms, guest cloakroom, and study.

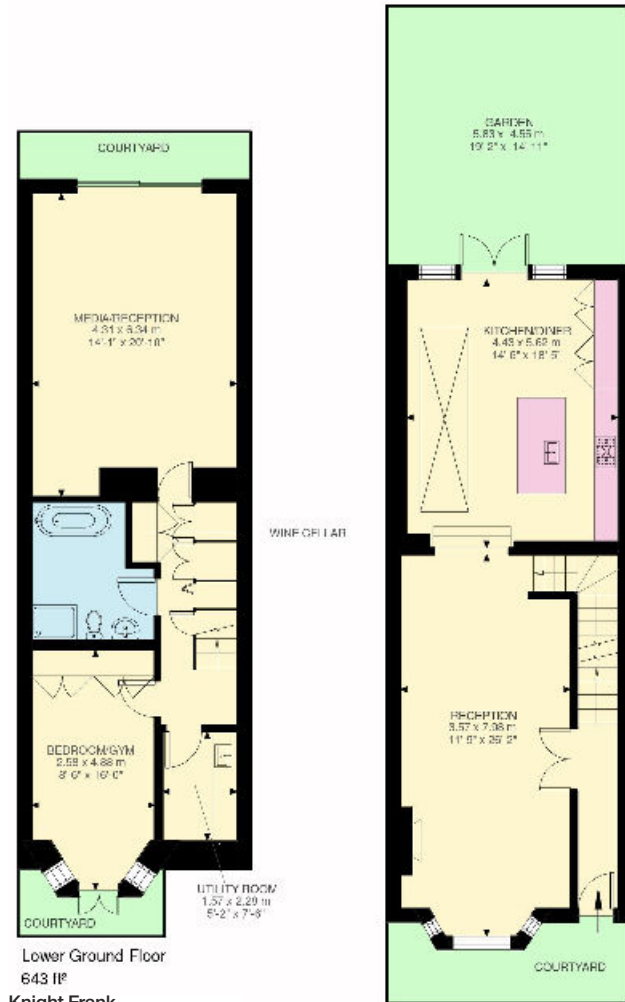
The ground floor accommodation consists of a beautiful Italian tiled entrance hall with Crittall glass doors, a double reception room with a marble fireplace, herringbone wood flooring and a fabulous kitchen/dining room with Crittall doors leading to a landscaped garden. The kitchen has been custom designed by Roundhouse with integrated appliances, pantry, and a central marble island with glass pendants.

The lower ground has been fully excavated with exceptional ceiling height of 3.2 meters providing a substantial media/cinema room, bedroom, bathroom, and separate utility. The ground and lower ground floor have been laid with engineered oak flooring throughout.

Further features include underfloor heating, custom built temperature-controlled wine storage, Sonos speaker system throughout house, custom wall recessed cinema speakers in media room, garden wall, plantation window shutters, mood lighting and a built in safe for valuables.



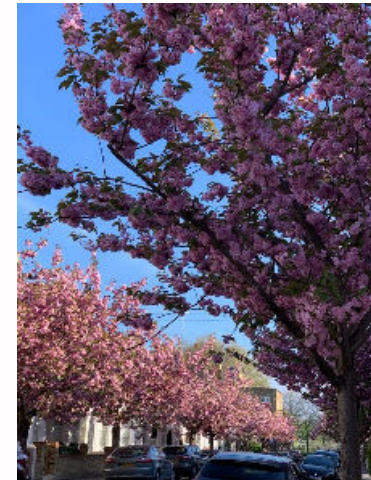




Alderville Road, SW6
Approximate Gross Internal Area
205.93 sq m / 2217 sq ft
 (Including Eaves Storage)
 Eaves Storage 11.43 sq m / 123 sq ft



This plan is for guidance only and must not be relied upon as a statement of fact.
 Attention is drawn to the important notice on the last page of the text of the Particulars.



Knight Frank
Fulham
 203 New Kings Road
 Fulham
 SW6 4SR
[knightfrank.co.uk](https://www.knightfrank.co.uk)

We would be delighted to tell you more
Arabella Howard-Evans **Joanna Sutherland**
 020 7751 2402 020 7751 2409
arabella.howardevans@knightfrank.co.uk joanna.sutherland@knightfrank.com



Fixtures and fittings: A list of the fitted carpets, curtains, light fittings and other items fixed to the property which are included in the sale (or may be available by separate negotiation) will be provided by the Seller's Solicitors.

Important Notice: 1. Particulars: These particulars are not an offer or contract, nor part of one. You should not rely on statements by Knight Frank LLP in the particulars or by word of mouth or in writing ("information") as being factually accurate about the property, its condition or its value. Neither Knight Frank LLP nor any joint agent has any authority to make any representations about the property, and accordingly any information given is entirely without responsibility on the part of the agents, seller(s) or lessor(s). 2. Photos, Videos etc: The photographs, property videos and virtual viewings etc. show only certain parts of the property as they appeared at the time they were taken. Areas, measurements and distances given are approximate only. 3. Regulations etc: Any reference to alterations to, or use of, any part of the property does not mean that any necessary planning, building regulations or other consent has been obtained. A buyer or lessee must find out by inspection or in other ways that these matters have been properly dealt with and that all information is correct. 4. VAT: The VAT position relating to the property may change without notice. 5. To find out how we process Personal Data, please refer to our Group Privacy Statement and other notices at <https://www.knightfrank.com/legals/privacy-statement>.

Particulars dated October 2024. Photographs and videos dated October 2024.

All information is correct at the time of going to print. Knight Frank is the trading name of Knight Frank LLP. Knight Frank LLP is a limited liability partnership registered in England and Wales with registered number OC305934. Our registered office is at 55 Baker Street, London W1U 8AN. We use the term 'partner' to refer to a member of Knight Frank LLP or an employee or consultant. A list of members names of Knight Frank LLP may be inspected at our registered office. If you do not want us to contact you further about our services then please contact us by either calling 020 3544 0692, email to marketing.help@knightfrank.com or post to our UK Residential Marketing Manager at our registered office (above) providing your name and address.