



Bovingdon Road, Fulham SW6



Bovingdon Road

Fulham SW6

This beautifully finished Lion House, located on a quiet street on the border of Chelsea, features a south-facing garden and underwent a 'back to brick' refurbishment by the current owners, whilst preserving original features. The renovations included rewiring, replumbing, and the addition of underfloor heating and air conditioning.

The ground floor accommodation comprises; an entrance hall with original Victorian tiles, a double reception room with a gas fireplace and an impressive open plan kitchen/dining room with doors leading to the private 24 foot south facing garden. The kitchen is fitted with an array of built in units, a central island and integrated appliances.



Guide price: £3,250,000

Tenure: Freehold

Local authority: Hammersmith and Fulham

Council tax band: G







The lower ground floor has been fully extended, and is ideal for guests or a live-in nanny, offering a substantial play/media room, a double bedroom, a shower room, and a utility room.

The first floor features two bedrooms: the principal bedroom with its own en suite bathroom, and a rear bedroom with access to a separate bathroom. The top floor includes two more double bedrooms and a shared family bathroom.





Location

Bovingdon Road is a pretty tree-lined street, just moments from the New Kings Road. It is well located for the green spaces of Eel Brook Common, Parsons Green and South Park, and the extensive shopping, leisure and dining facilities of the area.

Fulham Broadway and Parsons Green underground stations are both within a short walk that services the District line into central London. There are many bus services that run along New Kings Road, Wandsworth Bridge Road and Fulham Broadway.

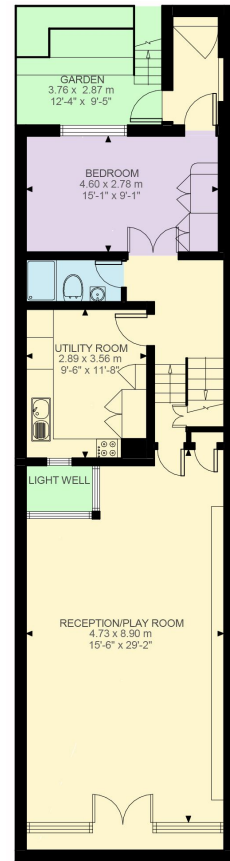




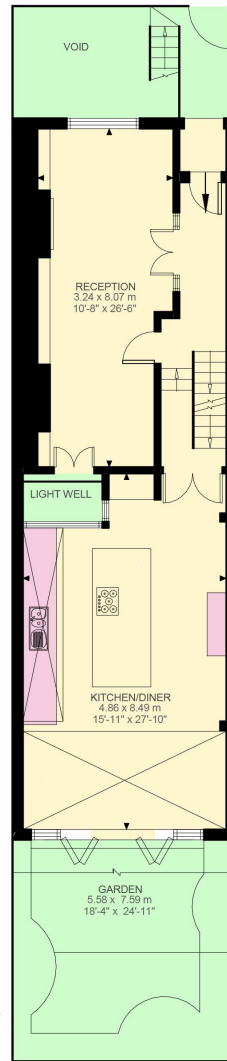
Bovingdon Road, SW6

Approximate Gross Internal Area
275.83 sq m / 2969 sq ft

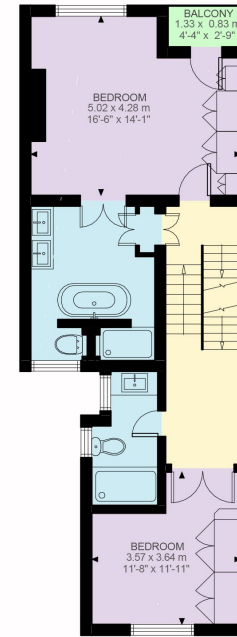
This plan is for guidance only and must not be relied upon as a statement of fact. Attention is drawn to the important notice on the last page of the text of the Particulars.



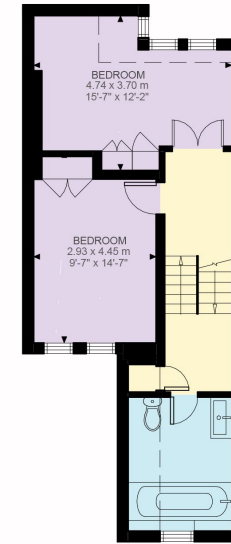
Lower Ground Floor
882 ft²



Ground Floor
918 ft²



First Floor
665 ft²



Second Floor
504 ft²

KEY: CH = Ceiling Height
Restricted Head Height

Knight Frank
Fulham
203 New Kings Road
Fulham
SW6 4SR
knightfrank.co.uk

We would be delighted to tell you more

Arabella Howard-Evans Joanna Sutherland
020 7751 2402 020 7751 2409
arabella.howardevans@knightfrank.jo.sutherland@knightfrank.com

Fixtures and fittings: A list of the fitted carpets, curtains, light fittings and other items fixed to the property which are included in the sale (or may be available by separate negotiation) will be provided by the Seller's Solicitors.

Important Notice: 1. Particulars: These particulars are not an offer or contract, nor part of one. You should not rely on statements by Knight Frank LLP in the particulars or by word of mouth or in writing ("information") as being factually accurate about the property, its condition or its value. Neither Knight Frank LLP nor any joint agent has any authority to make any representations about the property, and accordingly any information given is entirely without responsibility on the part of the agents, seller(s) or lessor(s). 2. Photos, Videos etc: The photographs, property videos and virtual viewings etc. show only certain parts of the property as they appeared at the time they were taken. Areas, measurements and distances given are approximate only. 3. Regulations etc: Any reference to alterations to, or use of, any part of the property does not mean that any necessary planning, building regulations or other consent has been obtained. A buyer or lessee must find out by inspection or in other ways that these matters have been properly dealt with and that all information is correct. 4. VAT: The VAT position relating to the property may change without notice. 5. To find out how we process Personal Data, please refer to our Group Privacy Statement and other notices at <https://www.knightfrank.com/legals/privacy-statement>. Particulars dated June 2024. Photographs and videos dated June 2024.

All information is correct at the time of going to print. Knight Frank is the trading name of Knight Frank LLP. Knight Frank LLP is a limited liability partnership registered in England and Wales with registered number OC305934. Our registered office is at 55 Baker Street, London W1U 8AN. We use the term 'partner' to refer to a member of Knight Frank LLP, or an employee or consultant. A list of members names of Knight Frank LLP may be inspected at our registered office. If you do not want us to contact you further about our services then please contact us by either calling 020 3544 0692, email to marketing.help@knightfrank.com or post to our UK Residential Marketing Manager at our registered office (above) providing your name and address.

