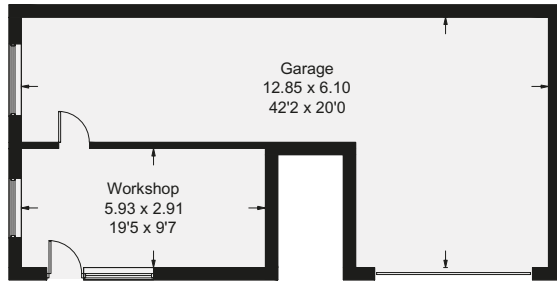
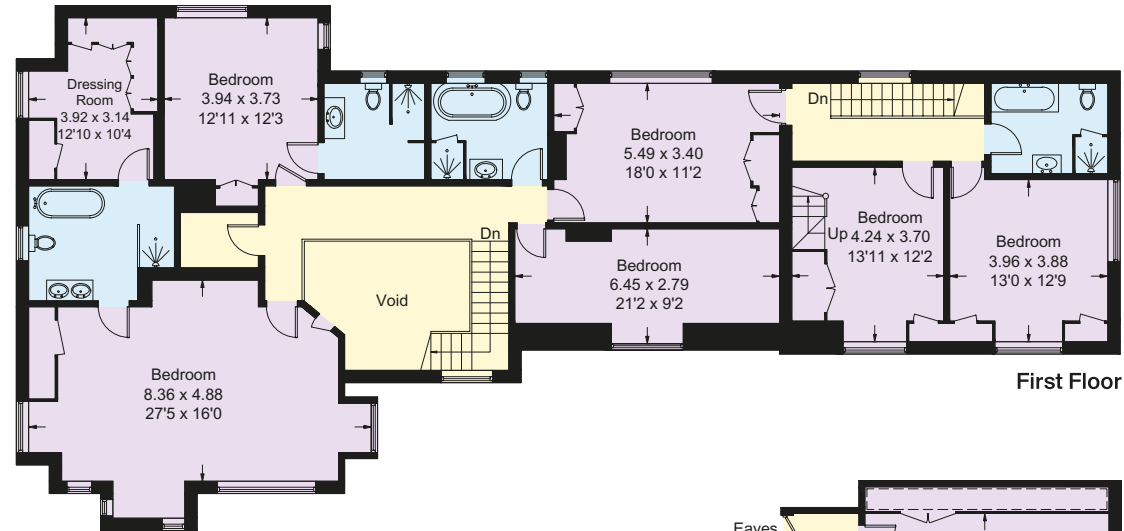


Approximate Gross Internal Floor Area
 438.6 sq m / 4721 sq ft (Excluding Void)
 Outbuilding = 71.8 sq m / 773 sq ft
 Total = 510.4 sq m / 5494 sq ft

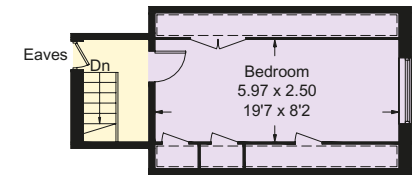
- Reception
- Bedroom
- Bathroom
- Kitchen/Utility
- Storage
- Outside



(Not Shown In Actual
 Location / Orientation)

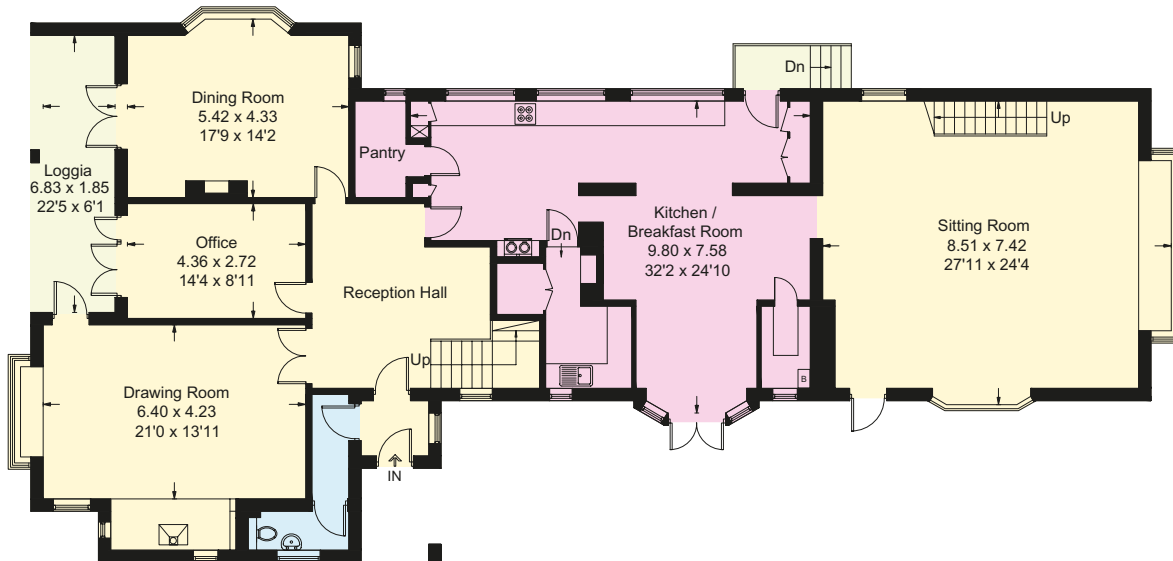


First Floor



Second Floor

= Reduced headroom below 1.5m / 5'0



Ground Floor

