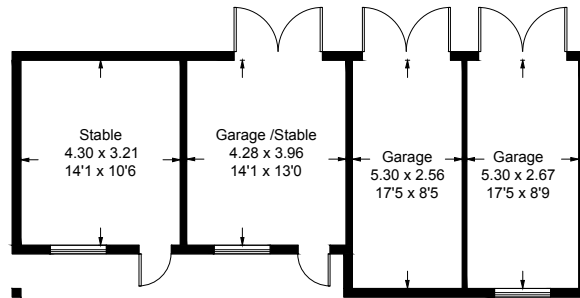

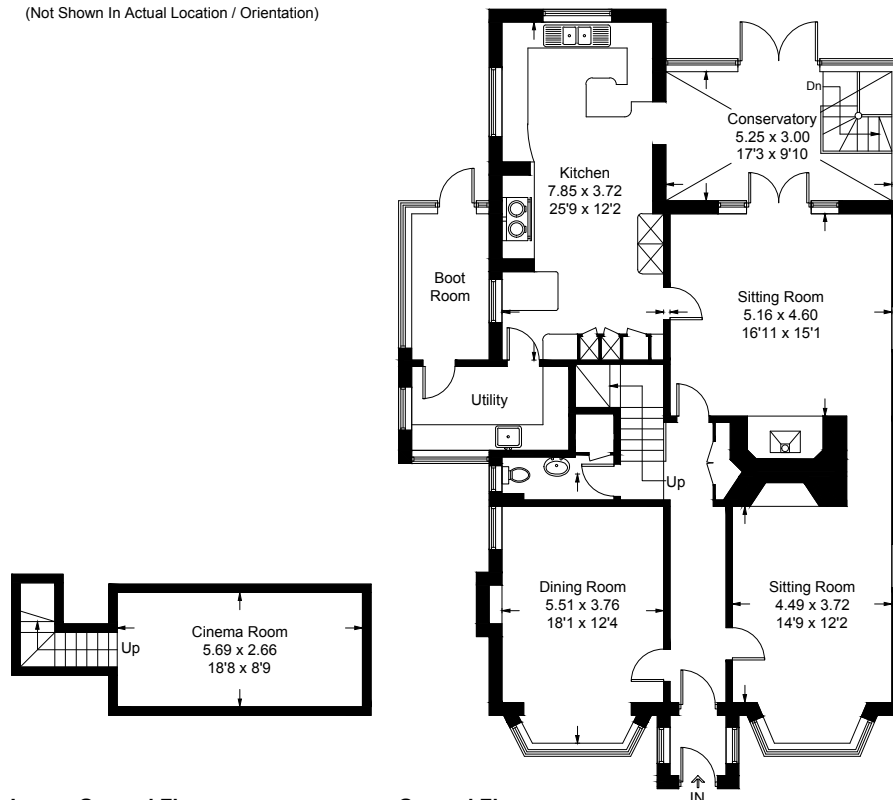
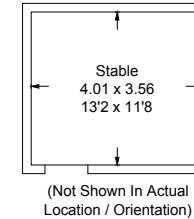


Approximate Gross Internal Area = 311.5 sq m / 3353 sq ft
 Outbuildings = 75.1 sq m / 808 sq ft
 (Including Garages / Excluding Eaves)
 Total = 386.6 sq m / 4161 sq ft



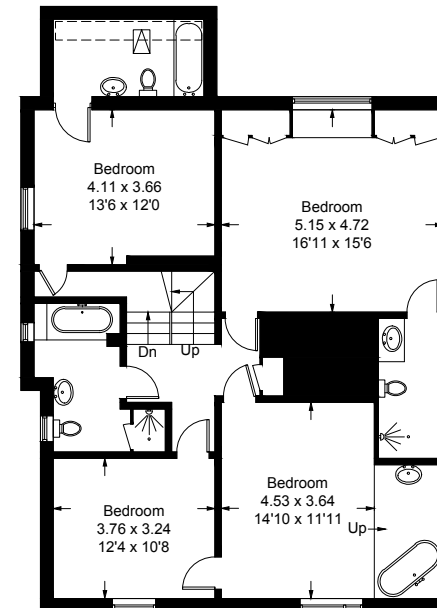
(Not Shown In Actual Location / Orientation)

 = Reduced headroom below 1.5m / 5'0

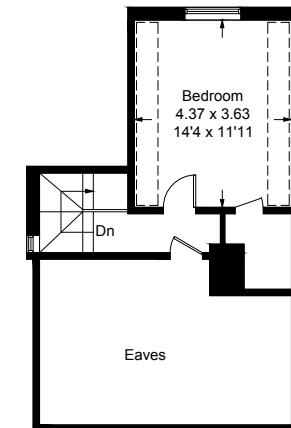


Lower Ground Floor

Ground Floor



First Floor



Second Floor

This plan is for layout guidance only. Not drawn to scale unless stated. Windows and door openings are approximate. Whilst every care is taken in the preparation of this plan, please check all dimensions, shapes and compass bearings before making decisions reliant upon them. (ID872331)