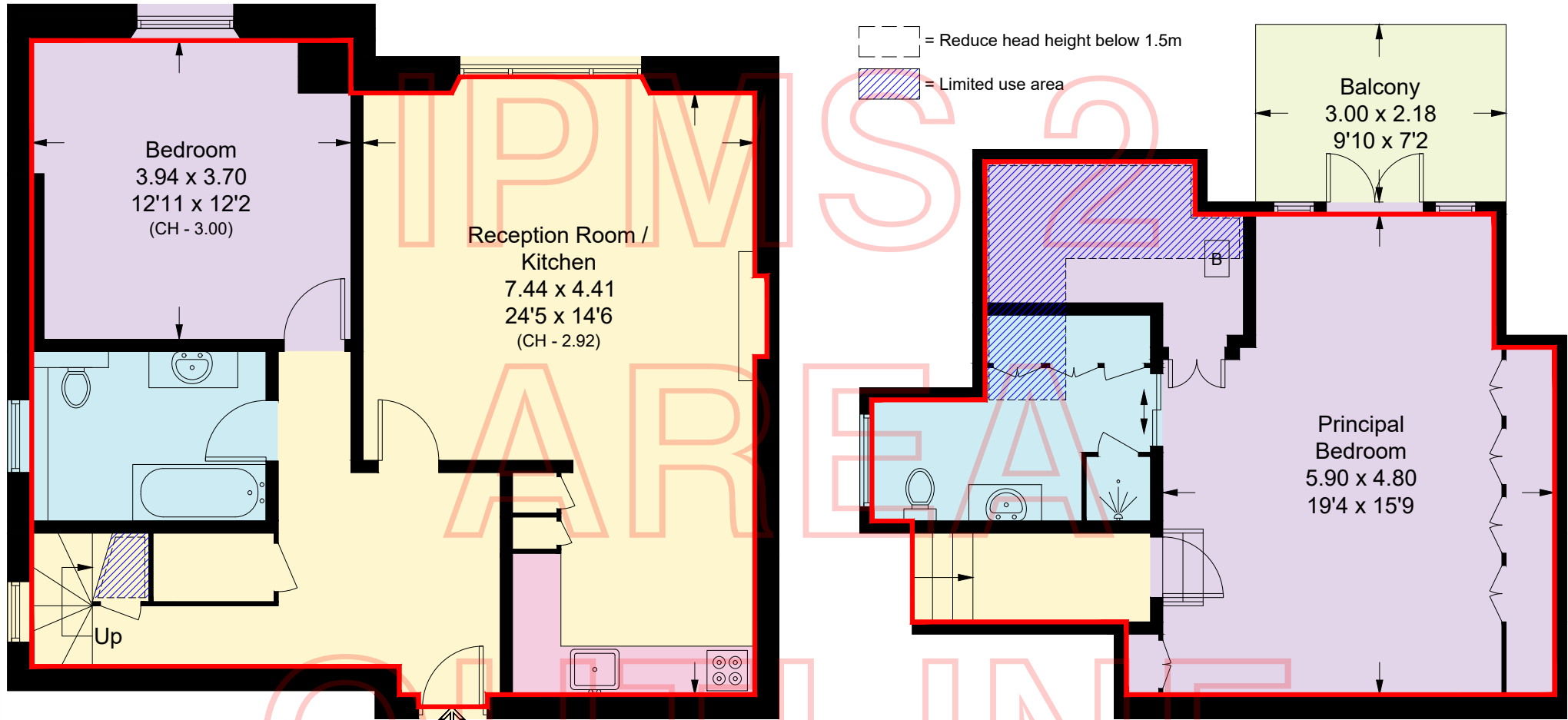


# Belsize Park Gardens, NW3

Approximate Area = 112.4 sq m / 1210 sq ft  
Including Limited Use Area (5.6 sq m / 60 sq ft)



## Second Floor

Approximate Area = 68.4 sq m / 736 sq ft  
Including Limited Use Area (0.4 sq m / 4 sq ft)

## Third Floor

Approximate Area = 44.0 sq m / 474 sq ft  
Including Limited Use Area (5.2 sq m / 56 sq ft)

Surveyed and drawn in accordance with the International property measurements standards (IPMS 2: Residential) Not drawn to scale unless stated. Whilst every care is taken in the preparation of this plan, please check all dimensions, shapes and compass bearings before making any decisions reliant upon them.