

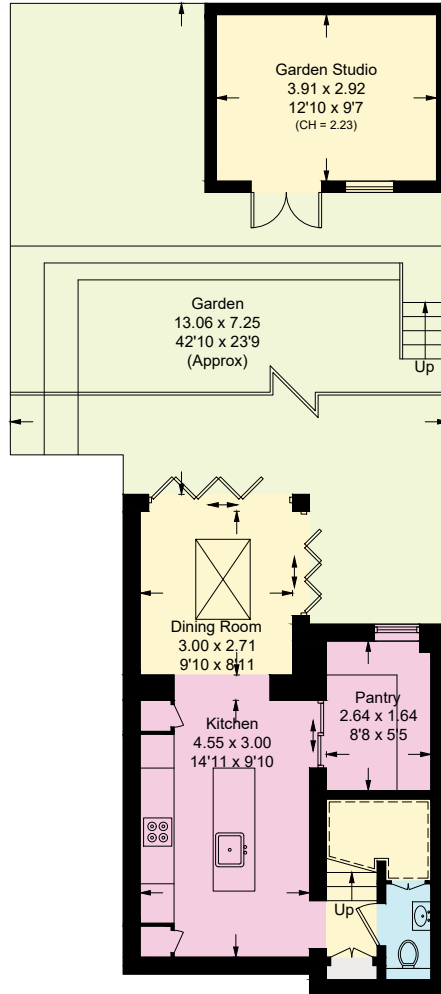
Upper Hampstead Walk, NW3

Approximate Area = 117.5 sq m / 1266 sq ft

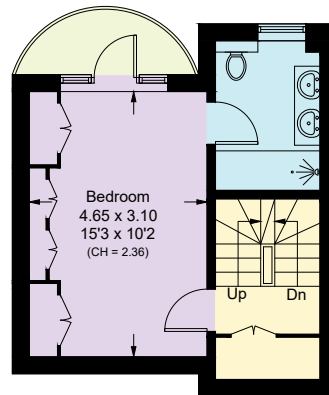
Garden Studio = 11.5 sq m / 124 sq ft

Total = 129 sq m / 1383 sq ft

Including Limited Use Area (3.2 sq m / 34 sq ft)

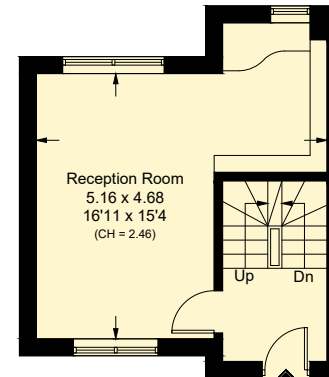


Garden Level
 Approximate Area = 36.4 sq m / 392 sq ft
 Including Limited Use Area (2.3 sq m / 25 sq ft)

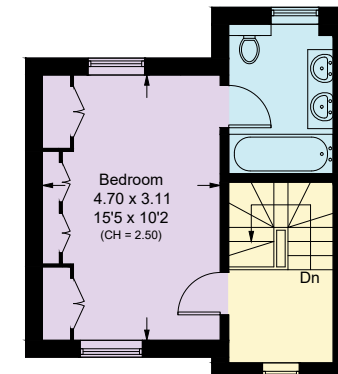


Lower Ground Floor
 Approximate Area = 26.9 sq m / 289 sq ft

= Reduce head height below 1.5m



Ground Floor
 Approximate Area = 27.2 sq m / 293 sq ft
 Including Limited Use Area (0.5 sq m / 5 sq ft)



First Floor
 Approximate Area = 27 sq m / 291 sq ft
 Including Limited Use Area (0.4 sq m / 4 sq ft)

Surveyed and drawn in accordance with the International property measurements standards (IPMS 2: Residential) Not drawn to scale unless stated. Whilst every care is taken in the preparation of this plan, please check all dimensions, shapes and compass bearings before making any decisions reliant upon them.