

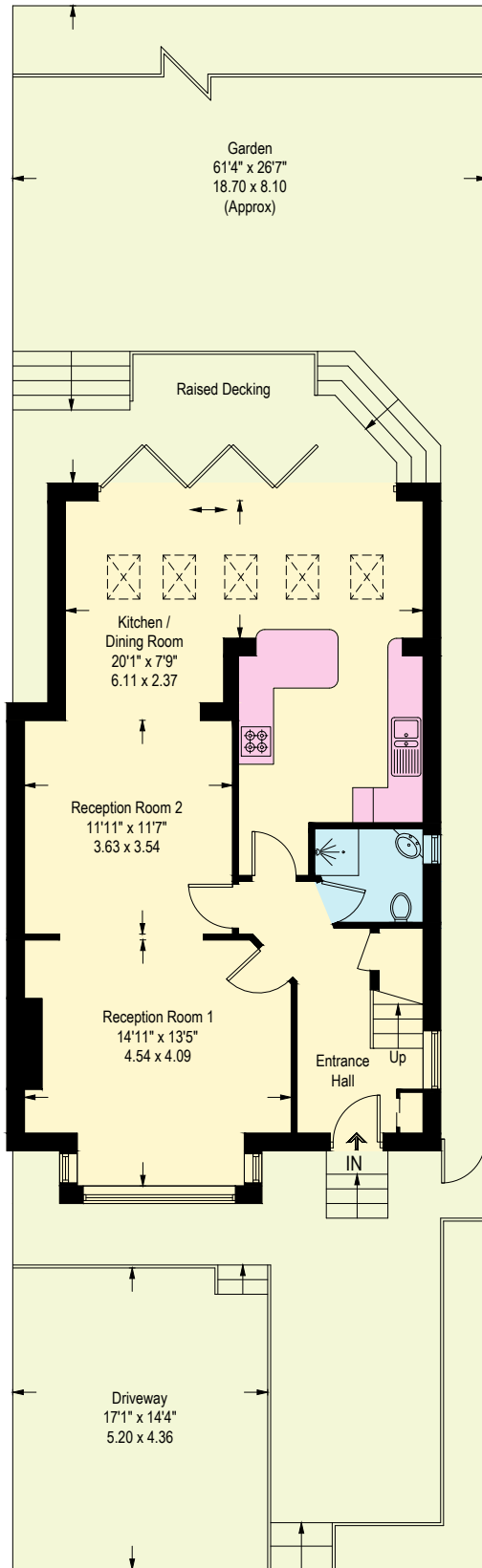
# Wessex Gardens, NW11

Approximate Gross Internal Area = 1653 sq ft / 153.6 sq m

(Excluding Reduced Headroom)

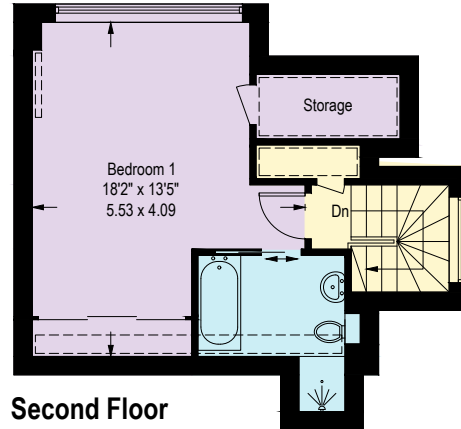
Reduced Headroom = 52 sq ft / 4.8 sq m

Total = 1705 sq ft / 158.4 sq m

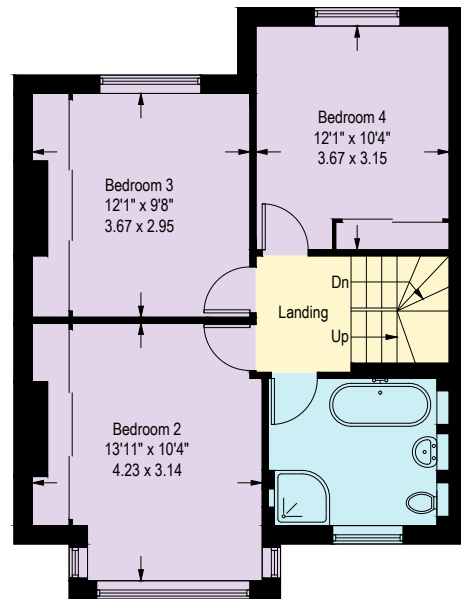


**Ground Floor**

= Reduced headroom below 1.5m / 5'0"



**Second Floor**



**First Floor**

Illustration for identification purposes only,  
measurements are approximate, not to scale. (ID1181285)