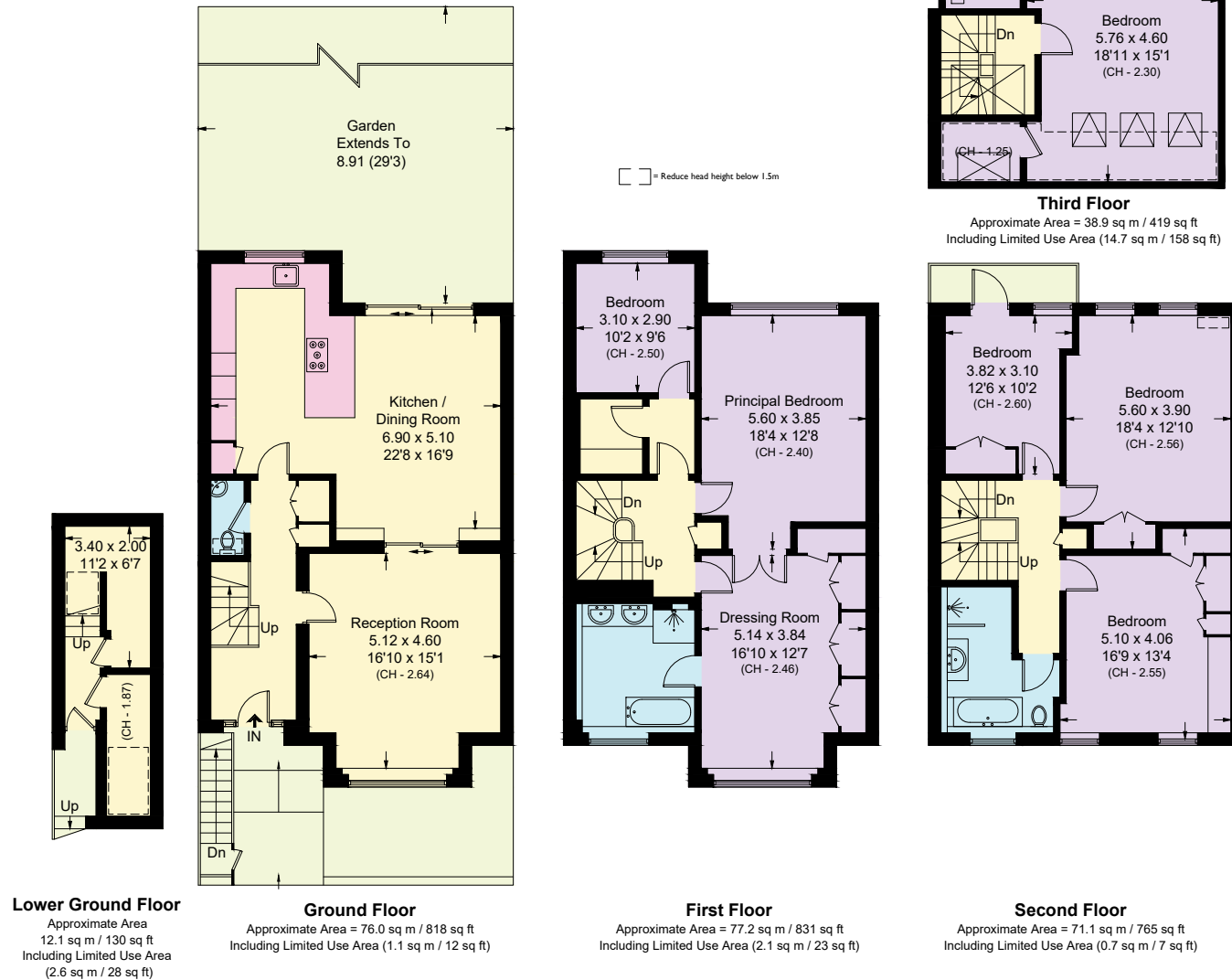


Howitt Road, NW3

Approximate Area = 254.1 sq m / 2735 sq ft

Limited Use Area = 21.2 sq m / 228 sq ft

Total = 275.3 sq m / 2963 sq ft



Surveyed and drawn in accordance with the International property measurements standards (IPMS 2: Residential) Not drawn to scale unless stated.
Whilst every care is taken in the preparation of this plan, please check all dimensions, shapes and compass bearings before making any decisions reliant upon them.