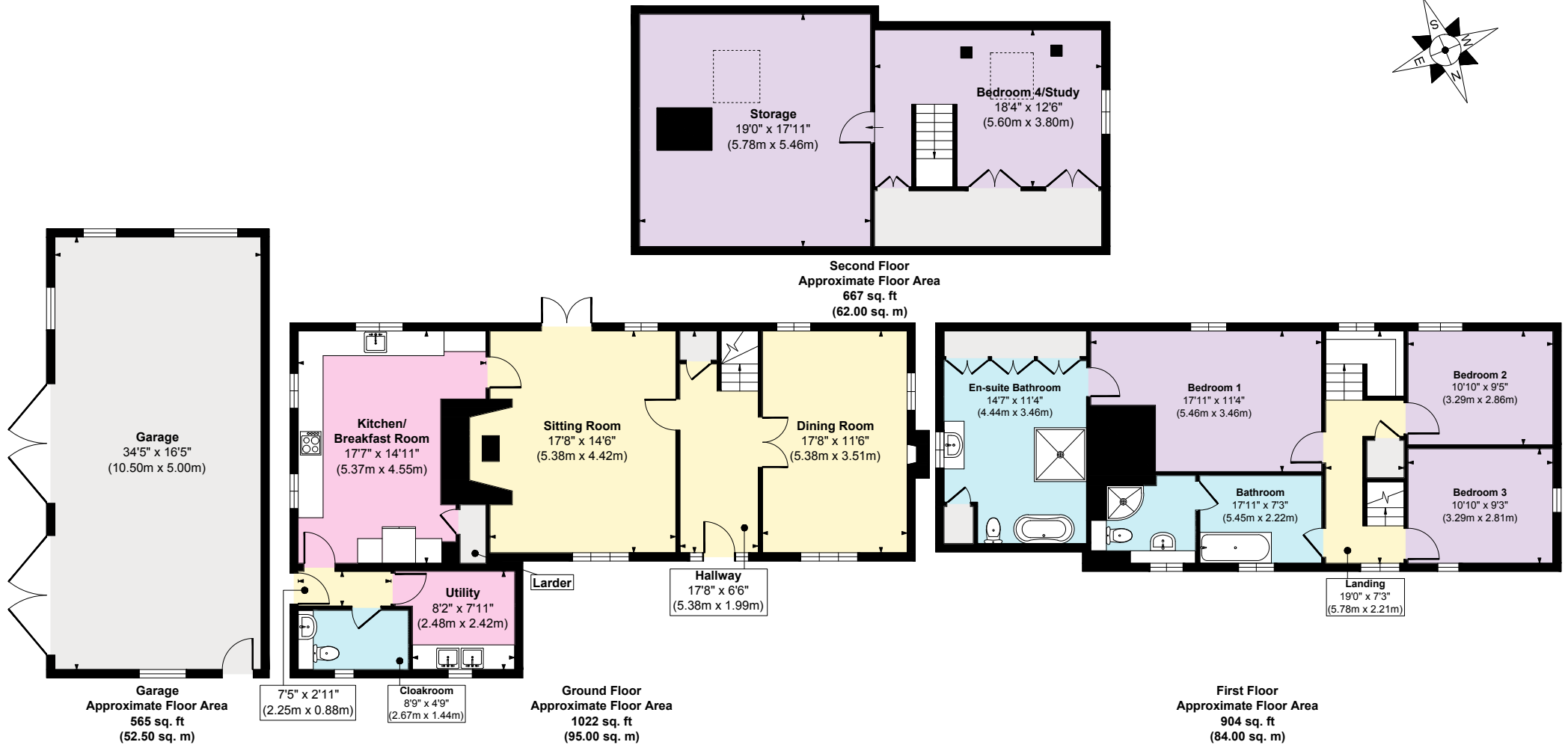
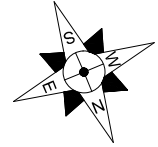


The Old Post Office, Monkhide, Herefordshire, HR8 2TX



Approx. Gross Internal Floor Area
Main House = 2593 sq. ft / 241.00 sq. m
Garage = 565 sq. ft / 52.50 sq. m

FOR ILLUSTRATIVE PURPOSES ONLY, MEASUREMENTS ARE APPROXIMATE - NOT TO SCALE
 The position & size of doors, windows, appliances and other features are approximate only.
 ©William Benton-Fife Photographer. Unauthorised reproduction prohibited.