



Buttle Farm, Compton Bassett, Wiltshire







Stylishly converted barns set around a courtyard with potential for further accommodation.

Summary of accommodation

Main Barn

Entrance hall/sitting room | Kitchen/dining room | Pantry/utility room
WC | Principal bedroom with en suite bathroom | Guest bedroom
with en suite shower room

East and West Cowes

Two separate guest suites

Office

Open plan office | Reception room | Plant room

Barn

With planning to convert to an open plan reception room/party barn
with adjacent glass link to Cowes barn | Lobby area | Comms room
Cloak/shower room

Courtyard | gravel terrace | Grounds | Paddock

Workshop/garage | Three-bay modern portal barn

In all about 1.42 acres

Distances

Calne 3.5 miles, Marlborough 12 miles, Chippenham 10 miles (London Paddington from 63 minutes)

Swindon 16 miles (London Paddington from 47 minutes), M4 J16 12 miles

(All distances and times are approximate)



Knight Frank Hungerford
Ramsbury House, 22 High Street
Hungerford
RG17 0NF
knightfrank.co.uk

Mark Potter
01488 682726
mark.potter@knightfrank.com



Situation

Buttle Farm is situated on the edge of Compton Bassett, a charming hamlet in the foothills of the North Wessex Downs, east of Calne. Calne provides excellent day to day shopping with Tesco and Sainsbury's supermarkets, whilst to the east is the popular town of Marlborough, providing further shopping as well as many coffee shops and interesting boutiques alongside well-known brand names.

The property is well placed for communication links and lies approximately 12 miles from junction 16 of the M4, which provides fast access to the A34/M40, central London and Bristol. Regular commuter trains run from nearby Chippenham and Swindon.

There are excellent schools in the area including St Mary's Calne, Dauntsey's and Marlborough College. There are also good primary and secondary schools in Calne.

Bowood House, a short distance away, has an eighteen hole golf course and a popular childrens' adventure playground.





The property

Buttle Farm conversion was completed in 2016 to the very highest standard using natural materials including English limestone and oak, creating light contemporary interiors. A strong focus has been placed on minimising environmental impact, utilising solar thermal, solar PV and biomass boiler together with mechanical ventilation and heat recovery.

The property consists of a courtyard of converted farm buildings with ancillary outbuildings. Planning permission is in place to enclose the main entrance and to erect a linking corridor between the timber/brick barn and the guest suites (ref. PL/2023/08203)

Approached through an archway to the courtyard, the entrance to the main house opens into a light-filled hallway/living room which features English limestone flooring and a woodburning stove. Leading off the hallway is the well-appointed kitchen/dining room, equipped with double ovens, warming drawers, microwave combi oven, steam combi oven, two dishwashers and Silestone worktops. Off the kitchen is a useful utility/pantry with access to outside.

The bespoke staircase from the hallway leads to a glass-panelled walkway, off which there are two good-sized bedroom suites with locally sourced, solid English oak floors. The principal bedroom has fitted wardrobes and built-in dressing table and bedside tables with an en suite shower/bathroom, tiled in Crema marble. At the far end of the walkway is the guest bedroom with en suite shower room.

Adjoining the main house but accessed via an external door is a generously sized office, the former dairy, that overlooks the courtyard. The office is well-fitted with built-in desks and cupboards and an underfloor wine cellar that runs almost the full length of the room. The plant room and biomass store are accessed via the office and adjoining reception room that also has double doors leading to the lane.

Across the courtyard are two separate guest suites, East and West Cowes, currently used as holiday lets but with permission in place to convert to residential use, both with lovely views over the rear gravel terrace and beyond to open countryside.

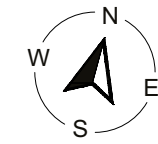
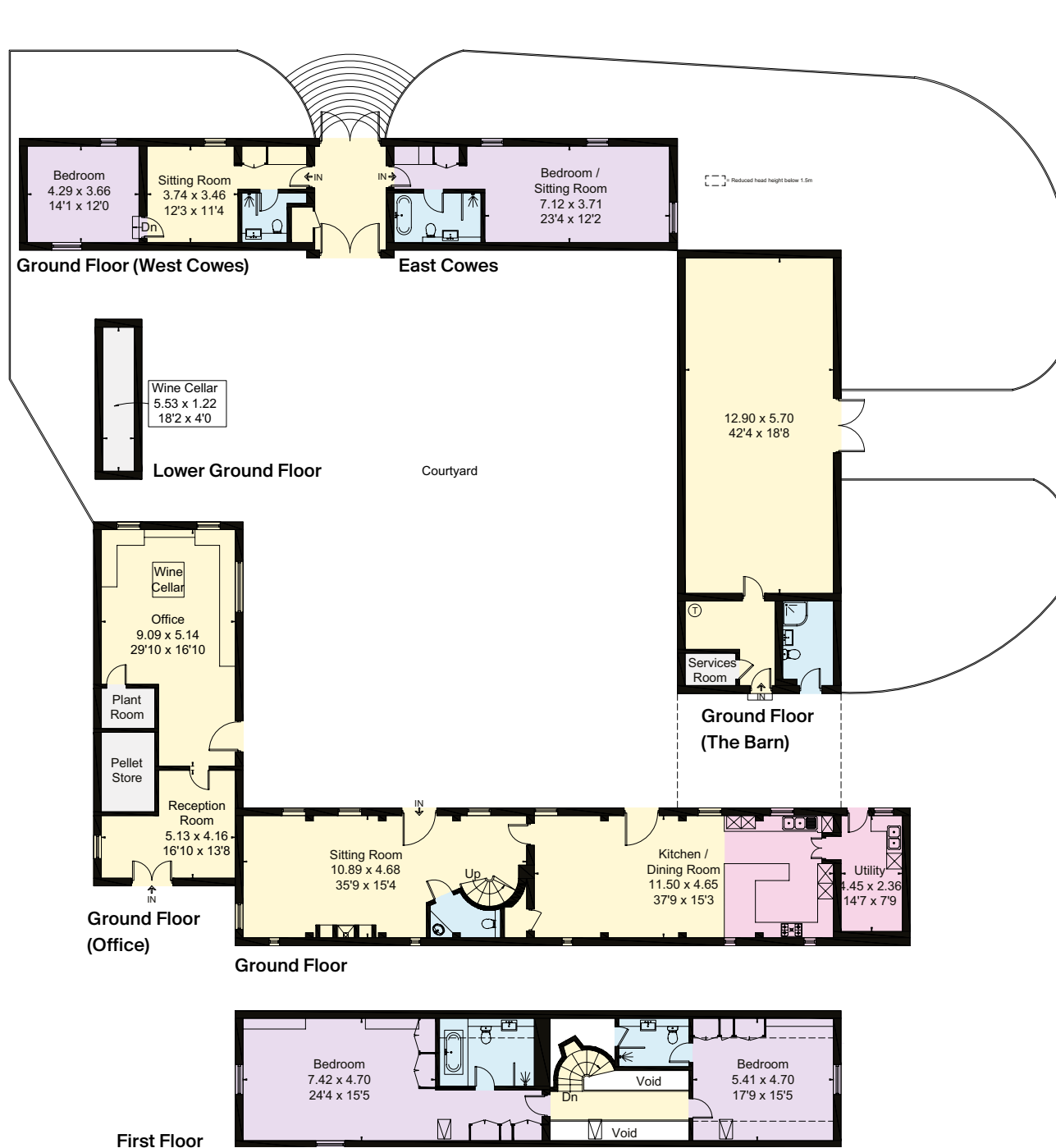




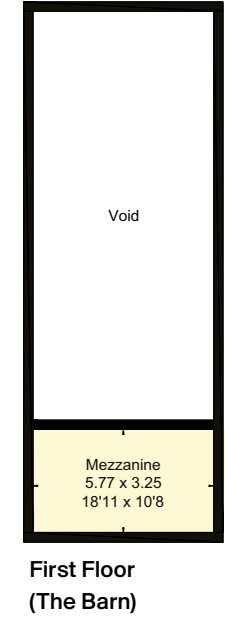
The accommodation benefits from underfloor heating throughout the ground floors.

The brick and timber barn has the potential to be a wonderful open reception/party room or ancillary accommodation. Planning permission is in place for full-height double doors onto the courtyard and a glazed walkway linking it to the guest suites. This together with enclosing the entrance archway to the courtyard would create a fantastic, cohesive living space.





- Reception
- Bedroom
- Bathroom
- Kitchen/Utility
- Storage
- Outside



Approximate Gross Internal Floor Area
 486.7 sq m / 5239 sq ft
 (Including Mezzanine / Excluding Void)
 Workshop/garage (not shown) 6.4m x 5.4m
 Modern barn (not shown) 13.7m x 8.3m

This plan is for guidance only and must not be relied upon as a statement of fact. Attention is drawn to the Important Notice on the last page of the text of the Particulars.

Proposed plans







Office



Outside

The central courtyard is a focal point from all the barns with the lovely original features enhanced by symmetrical planting. To the rear of East and West Cowes suites is a gravelled terrace running the full length of the barn, with a brick pizza oven at one end. With wonderful views over the open countryside, this is a perfect setting for entertaining. Beyond is the paddock. Beside the parking area is a workshop/garage and three-bay modern barn providing useful storage space.

In total the grounds extend to approximately 1.42 acres.

Services

Mains water, electricity and drainage. Wood pellet biomass heating system. Fibre broadband.



Office



Directions (SN11 8RE)

What3words: suffix.alpha.indeed

Fixtures & fittings

Only those mentioned in these sales particulars are included in the sale. All others, such as fitted carpets, curtains, light fittings, garden ornaments etc., are specifically excluded but may be made available by separate negotiation.

Viewing

Viewing by prior appointment only with the Agent.

Property information

Tenure: Freehold

Local Authority: Wiltshire Council: 0300 456 0100

Council Tax: Band E

EPC Rating: C

Fixtures and fittings: A list of the fitted carpets, curtains, light fittings and other items fixed to the property which are included in the sale (or may be available by separate negotiation) will be provided by the Seller's Solicitors.

Important Notice: 1. Particulars: These particulars are not an offer or contract, nor part of one. You should not rely on statements by Knight Frank LLP in the particulars or by word of mouth or in writing ("information") as being factually accurate about the property, its condition or its value. Neither Knight Frank LLP nor any joint agent has any authority to make any representations about the property, and accordingly any information given is entirely without responsibility on the part of the agents, seller(s) or lessor(s). 2. Photos, Videos etc: The photographs, property videos and virtual viewings etc. show only certain parts of the property as they appeared at the time they were taken. Areas, measurements and distances given are approximate only. 3. Regulations etc: Any reference to alterations to, or use of, any part of the property does not mean that any necessary planning, building regulations or other consent has been obtained. A buyer or lessee must find out by inspection or in other ways that these matters have been properly dealt with and that all information is correct. 4. VAT: The VAT position relating to the property may change without notice. 5. To find out how we process Personal Data, please refer to our Group Privacy Statement and other notices at <https://www.knightfrank.com/legals/privacy-statement>.

Particulars dated April 2024. Photographs and videos dated August 2020. Reference: MPHNG012407169

All information is correct at the time of going to print. Knight Frank is the trading name of Knight Frank LLP. Knight Frank LLP is a limited liability partnership registered in England and Wales with registered number OC305934. Our registered office is at 55 Baker Street, London W1U 8AN. We use the term 'partner' to refer to a member of Knight Frank LLP, or an employee or consultant. A list of members names of Knight Frank LLP may be inspected at our registered office. If you do not want us to contact you further about our services then please contact us by either calling 020 3544 0692, email to marketing.help@knightfrank.com or post to our UK Residential Marketing Manager at our registered office (above) providing your name and address. Brochure by wordperfectprint.com

