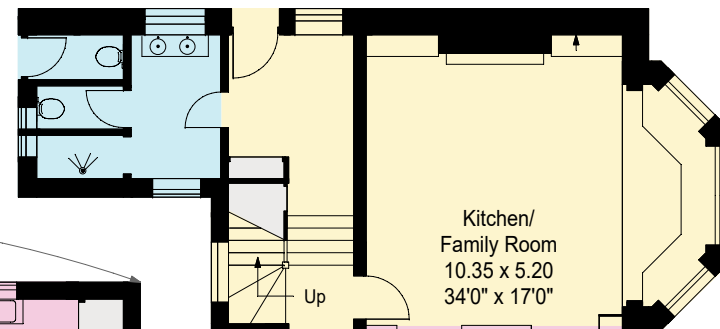
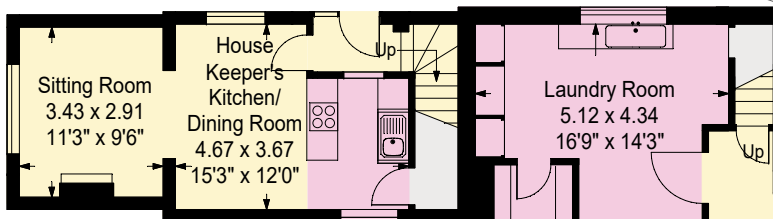


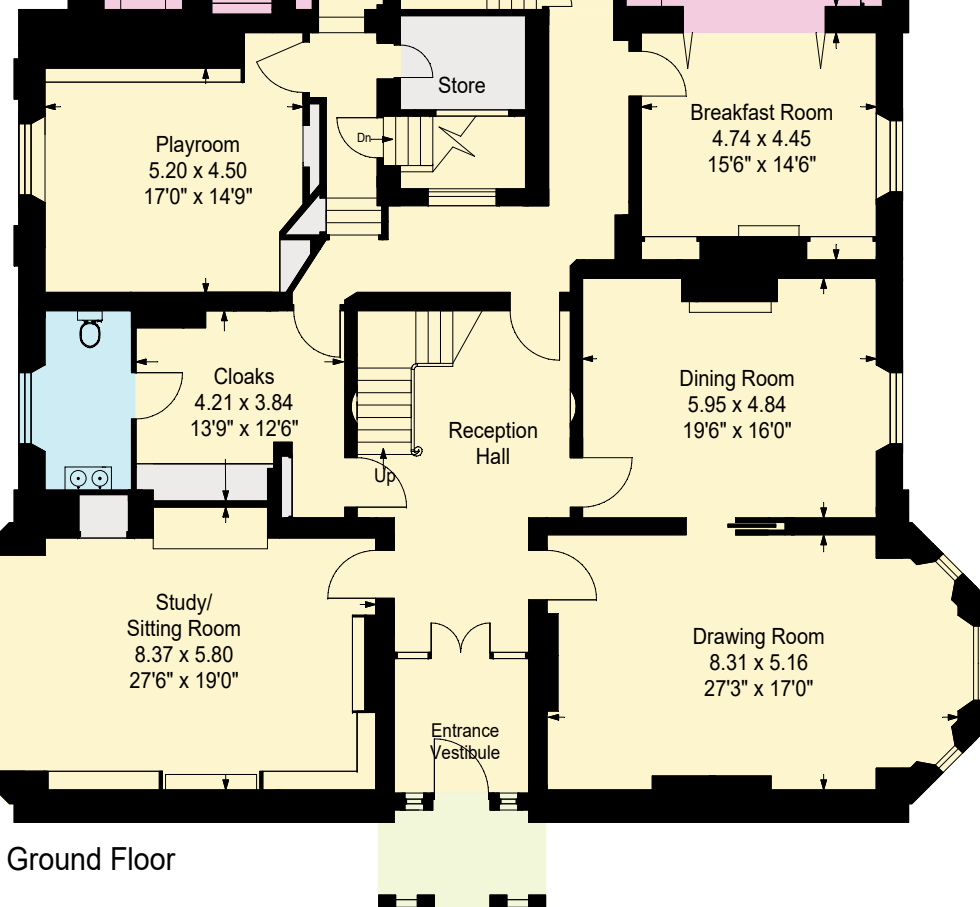
Ground Floor Mezzanine



- Reception Rooms/General Circulation Areas
- Kitchen/Workshop/Utility/Plant
- Bedroom/Dressing Rooms
- Bathrooms
- Storage
- Outside Space
- Stables

Approximate Gross Internal Floor Area:
 House: 1186sq.m. or 12766sq.ft.
 Broadleas Lodge: 99sq.m. or 1066sq.ft.
 South Lodge: 57sq.m. or 614sq.ft.
 (Excluding Cellar)
 Outbuildings 252sq.m. or 2713sq.ft.
Total: 1573sq.m. or 16925sq.ft.
 © 2024 HOMEPLAN
 www.homeplanuk.co.uk
 Constructed in accordance with the IPMS code of measuring practice, this plan is for layout guidance only. It is not to scale, unless specified. Please check all dimensions & shapes before making any decisions reliant upon them.

Ground Floor

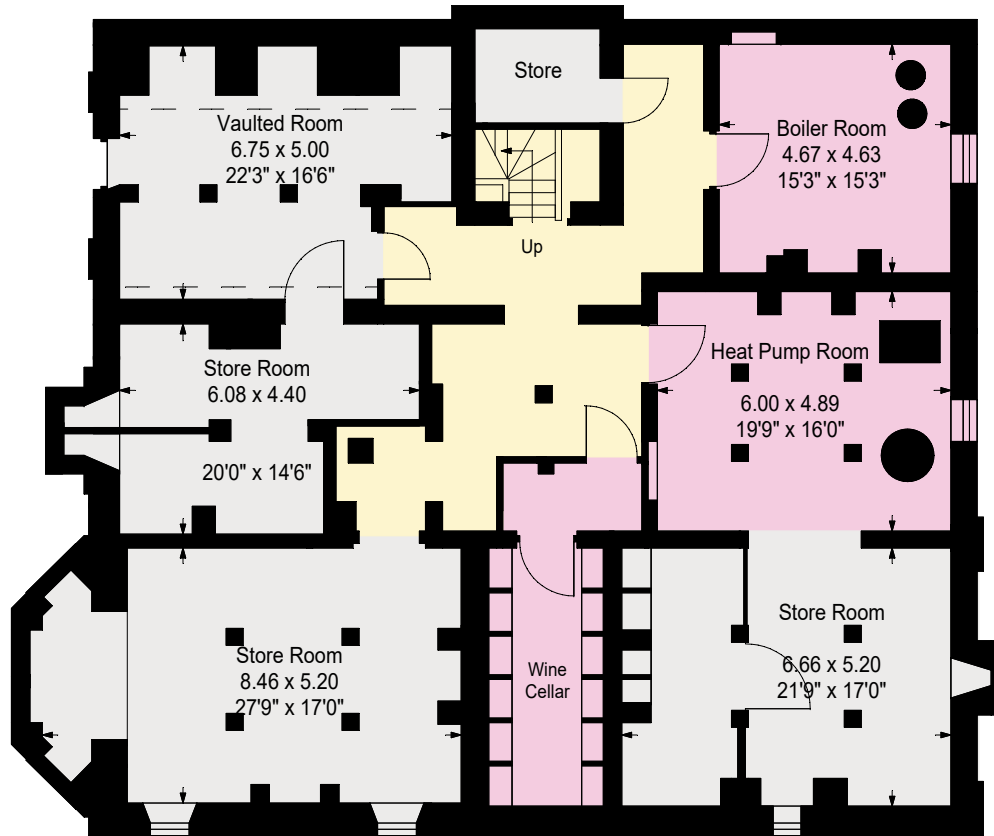




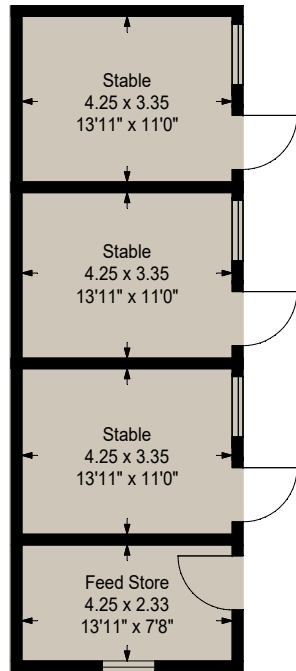
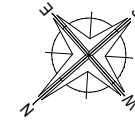
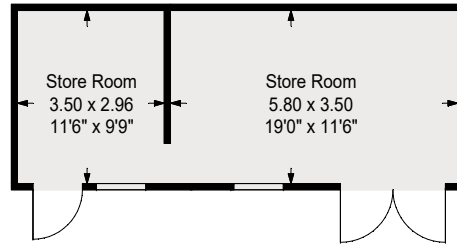
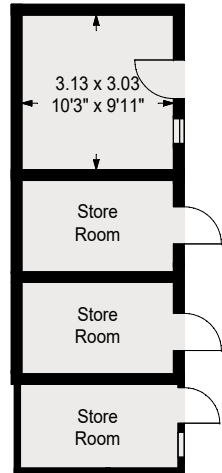
Ground Floor Mezzanine

First Floor Mezzanine

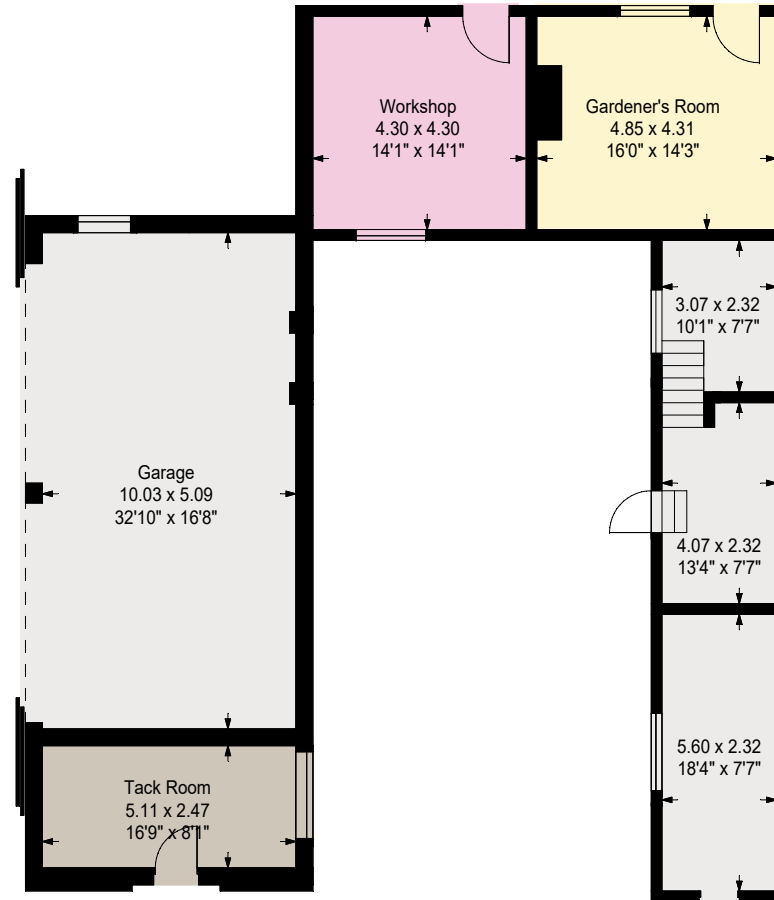
First Floor



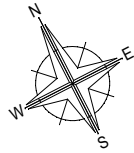
Cellars



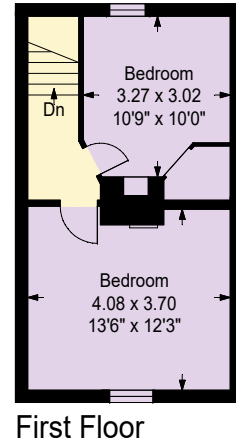
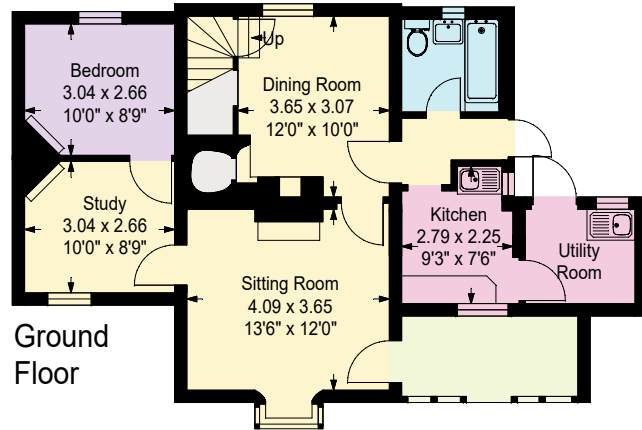
Stables



Garage/Workshop/Stores



Broadleas Lodge



South Lodge

