



Hale Farm House

Hale Farm House
Loxwood Road
Rudgwick
Horsham
West Sussex RH12 3BP

Enjoying far reaching views over mature gardens and paddocks extending to nearly 28 acres, a country house full of period charm, with two barns, one of which is converted into ancillary accommodation

- Entrance porch and reception hall
- Sitting room, dining room, day room, study and garden room
- Kitchen / breakfast room, larder, utility room and 2 cloakrooms
- Master bedroom with en suite dressing room / bathroom
- 5 further bedrooms and 3 further bathrooms (2 en suite)
- Barn comprising entertaining area and flat with kitchen / breakfast room, bedroom and bathroom
- Further barn, with storage and garaging, and granary
- Gardens, swimming pool and tennis court
- Ha-ha, orchard and paddocks
- In about 27.83 acres

























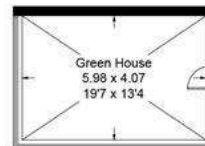




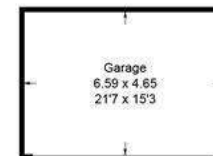
Approximate Gross Internal Area = 570.3 sq m / 6139 sq ft
 Outbuildings = 449.7 sq m / 4840 sq ft
 Total = 1020.0 sq m / 10979 sq ft



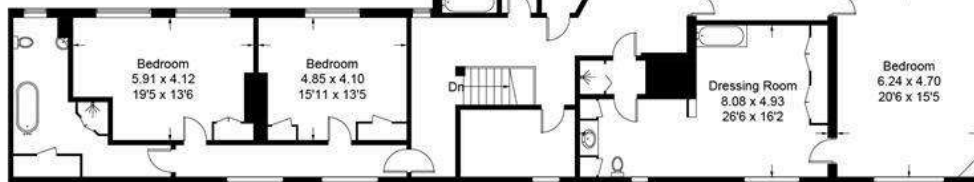
(Not Shown In Actual Location / Orientation)



(Not Shown In Actual Location / Orientation)



(Not Shown In Actual Location / Orientation)



First Floor

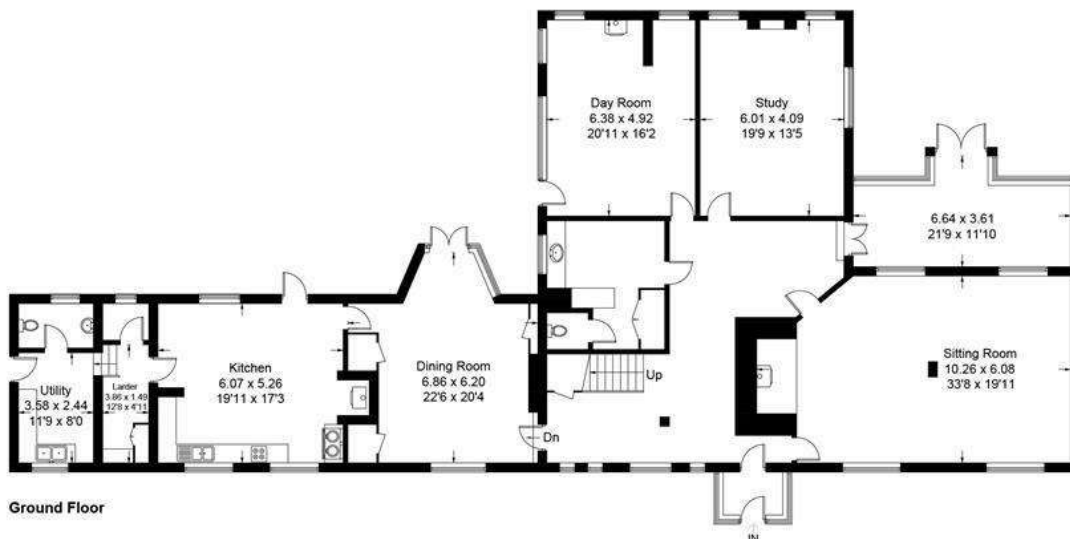


Ground Floor

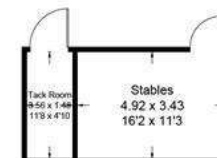


First Floor

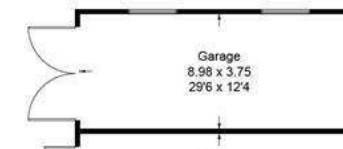
(Not Shown In Actual Location / Orientation)



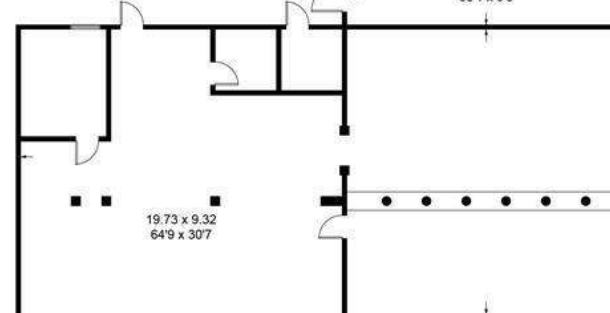
Ground Floor



(Not Shown In Actual Location / Orientation)



Store
9.18 x 2.81
30'1 x 9'3



(Not Shown In Actual Location / Orientation)

This plan is for layout guidance only. Not drawn to scale unless stated. Windows and door openings are approximate. Whilst every care is taken in the preparation of this plan, please check all dimensions, shapes and compass bearings before making decisions reliant upon them. (ID869866)







Approximate total gross internal area: House 6,139 sq ft / 570.3 sq m. Outbuildings 4,840 sq ft / 449.7 sq m. Total 10,979 sq ft / 1,020 sq m.

Services: Mains water and electricity. Oil-fired central heating. Private Klargester drainage.

Local authority: Horsham District Council. Tel: 01403 215100.

Viewing: Strictly by appointment. Tel: 01483 266700.



house.
PARTNERSHIP



house. Partnership

Astra House
The Common
Cranleigh
GU6 8RZ

housepartnership.co.uk

David Carter

01483 266 700

dcarter@housepartnership.co.uk

Knight Frank

55 Baker Street
London
W1U8AN

knightfrank.com

Oliver Rodbourne

020 7861 1093

oliver.rodbourne@knightfrank.com

Russell Grieve

01428 770 562

russell.grieve@knightfrank.com

