

Little Hill, Harpsden Bottom, Henley-on-Thames, Oxfordshire





Once the home of the singer Dusty Springfield, this superb period property is situated on the outskirts of Henley-on-Thames with delightful countryside views.

Summary of accommodation

Main House

Ground Floor Entrance Hall | Sitting room | Drawing room
Reception room | Study | Kitchen | Utility | Pantry | Store room
Cloakroom with W.C.

First Floor Principal bedroom suite with wardrobes, en suite
bathroom and dressing room | Seven further bedrooms
Three bathrooms

Garden and Grounds

Landscaped lawned garden and grounds | Terrace | Garages
Drive with two accesses: one from Harpsden and one from
Gillott's Lane

In all about 2.5 acres



5 - 8



4



5



2

EPC
D



Henley-on-Thames
20 Thameside
Henley-on-Thames
RG9 2LJ
[knightfrank.co.uk](https://www.knightfrank.co.uk)

Matt Davies
01491 844903
matt.davies@knightfrank.com

Country Department
55 Baker Street
London
W1U 8AN
[knightfrank.co.uk](https://www.knightfrank.co.uk)

Edward Welton
020 7861 1114
edward.welton@knightfrank.com

Situation

Little Hill stands in one of Henley's most highly regarded village locations. Harpsden seamlessly links with the nearby countryside providing wonderful walks and riding together with many inviting public houses. The town centre of Henley-on-Thames is within 1 mile. Henley is well served for schools including Rupert House School; Trinity C.E Primary school; Shiplake College; The Oratory School, Reading Bluecoats, Reading Grammar School for boys, Radley College, Wycombe Abbey for girls, Queen Anne's Caversham for girls. The larger centres of Reading and Oxford provide a further range of shopping, leisure and recreational facilities. There is a rail commuter service from Henley-on-Thames via Reading to London Paddington in approximately 52 minutes or the Elizabeth Line from Reading that takes you directly into the centre of London or Paddington in 28 minutes.



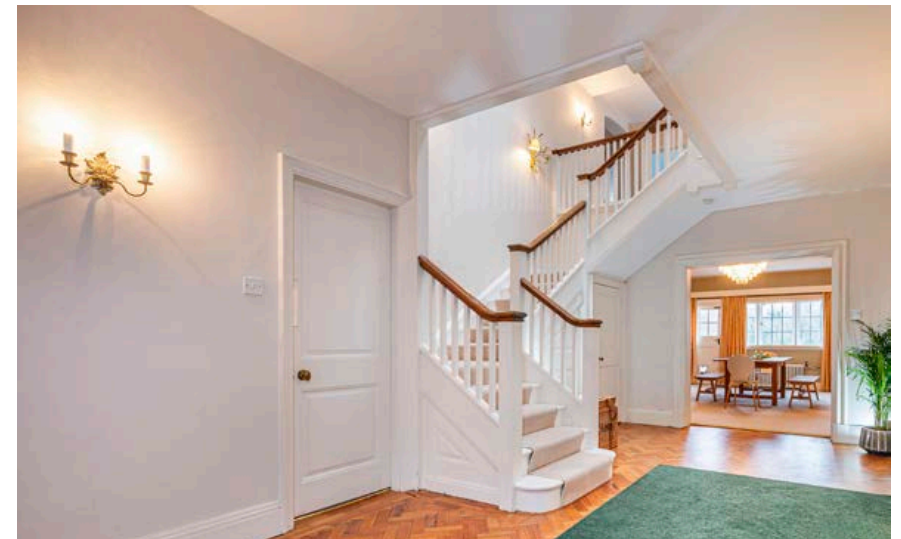


The Property

Little Hill occupies a wonderful elevated position in Harpsden, enjoying far-reaching views across the valley towards Henley Golf course. Formally the home of Dusty Springfield, the property enjoys a high degree of privacy with the convenience of being approximately 1 mile from Henley and within 45 minutes of Heathrow and London. The house has been in the same ownership for over 45 years and offers a rare opportunity to purchase a sizeable country house in a highly desirable location.

A long private tree-lined drive leads to the house, with the driveway sweeping round to the front of the property. The principal reception rooms and bedrooms enjoy lovely views over the south facing gardens and countryside beyond and the house offers tremendous scope to improve and enlarge subject to the relevant permissions being obtained. The accommodation is well-laid out and extensive offering flexible family and entertaining space. The layout can be found on the enclosed floorplans.

The property consists of five/eight bedrooms, four bathrooms, five reception rooms, kitchen, pantry, utility, and a wonderful balcony accessed from the principal bedroom. Most of the rooms have delightful views of the gardens and the property has a sweeping driveway with two garages.













Property information

Services: Mains water, electricity, drainage, gas fired central heating.

Energy Performance: D

Council Tax: G

Local Authority: South Oxfordshire District Council Tel: 01491 823 000

Directions (Postcode: RG9 4HR)

From Henley-on-Thames on entering Henley via the bridge turn left along the river and follow the road around into Station road and on to the traffic lights. Turn left at the lights into the Reading road and proceed to the mini roundabout. Take the second exit off the roundabout into Harpsden way and follow along for approximately 1 mile where Little Hill will be found on your right hand side.

Viewings

All viewings strictly by appointment only through the vendors' sole selling agents, Knight Frank LLP.

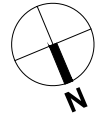
Approximate Gross Internal Floor Area

Main House = 517.4 sq m / 5,569 sq ft

Stores= 11.3 sq m / 121 sq ft

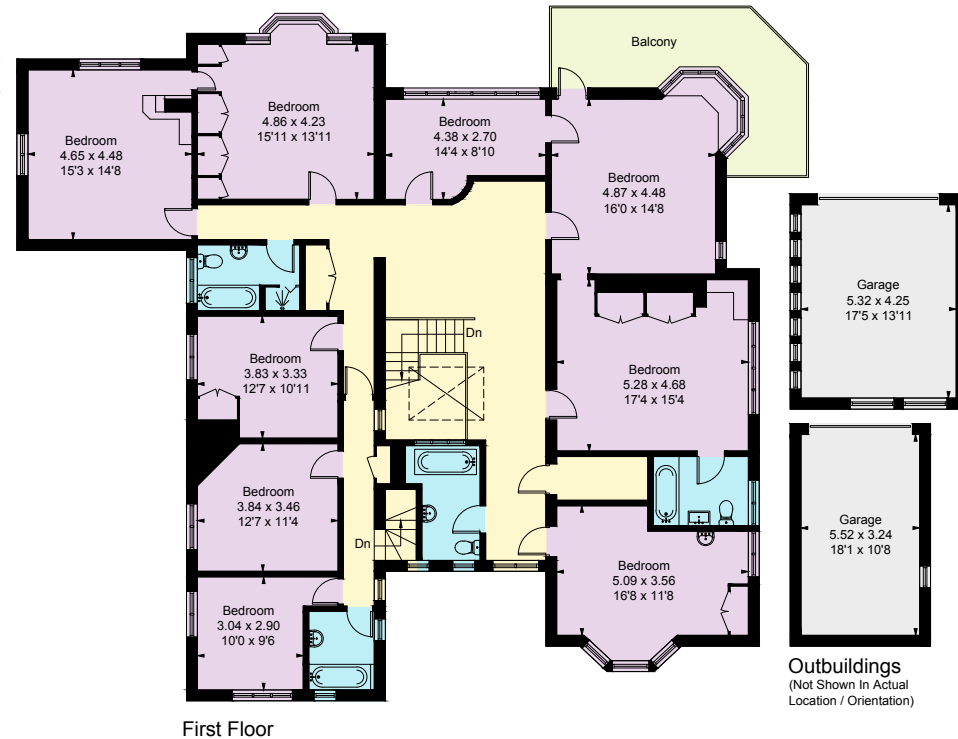
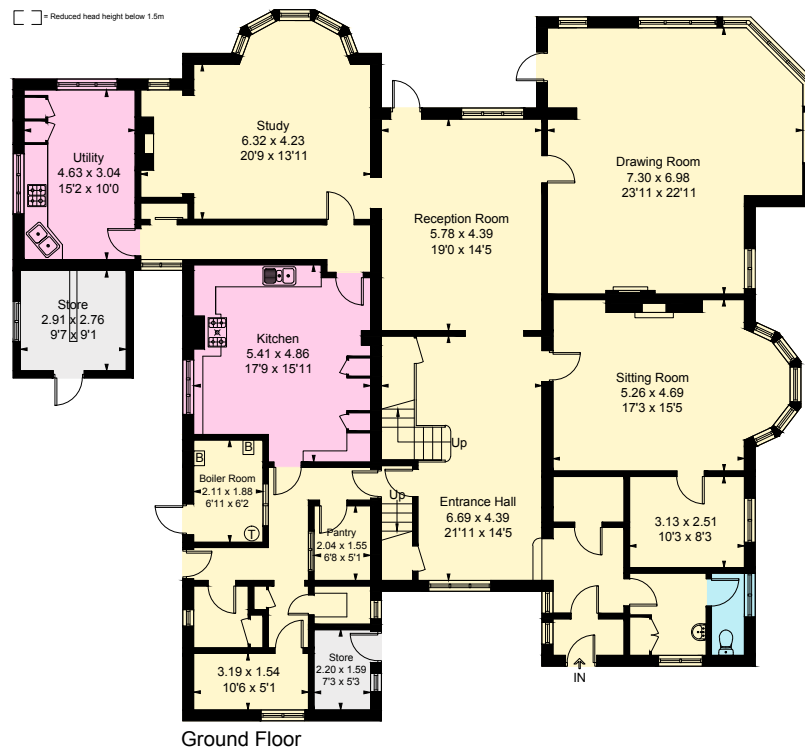
Outbuildings = 40.3 sq m / 434 sq ft

Total Area = 569 sq m / 6,124 sq ft



This plan is for guidance only and must not be relied upon as a statement of fact. Attention is drawn to the important notice on the last page of the text of the Particulars.

 Reduced head height below 1.5m



Outbuildings
(Not Shown In Actual Location / Orientation)

Fixtures and fittings: A list of the fitted carpets, curtains, light fittings and other items fixed to the property which are included in the sale (or may be available by separate negotiation) will be provided by the Seller's Solicitors.

Important Notice: 1. Particulars: These particulars are not an offer or contract, nor part of one. You should not rely on statements by Knight Frank LLP in the particulars or by word of mouth or in writing ("information") as being factually accurate about the property, its condition or its value. Neither Knight Frank LLP nor any joint agent has any authority to make any representations about the property, and accordingly any information given is entirely without responsibility on the part of the agents, seller(s) or lessor(s). 2. Photos, Videos etc: The photographs, property videos and virtual viewings etc. show only certain parts of the property as they appeared at the time they were taken. Areas, measurements and distances given are approximate only. 3. Regulations etc: Any reference to alterations to, or use of, any part of the property does not mean that any necessary planning, building regulations or other consent has been obtained. A buyer or lessee must find out by inspection or in other ways that these matters have been properly dealt with and that all information is correct. 4. VAT: The VAT position relating to the property may change without notice. 5. To find out how we process Personal Data, please refer to our Group Privacy Statement and other notices at <https://www.knightfrank.com/legals/privacy-statement>.

Particulars dated April 2024. Photographs and videos dated August 2023 and March 2024.

All information is correct at the time of going to print. Knight Frank is the trading name of Knight Frank LLP. Knight Frank LLP is a limited liability partnership registered in England and Wales with registered number OC305934. Our registered office is at 55 Baker Street, London W1U 8AN. We use the term 'partner' to refer to a member of Knight Frank LLP, or an employee or consultant. A list of members names of Knight Frank LLP may be inspected at our registered office. If you do not want us to contact you further about our services then please contact us by either calling 020 3544 0692, email to marketing.help@knightfrank.com or post to our UK Residential Marketing Manager at our registered office (above) providing your name and address.



