



# Oaktrees

Waltham St. Lawrence, Berkshire











# A spacious, detached family home with wonderful gardens.

Henley 7.9 miles, Marlow 9.2 miles, Reading 9.2 miles (trains to London Paddington from 22 minutes),  
Oxford 41.2 miles, M40 16.4 miles, M4 14.3 miles  
(Distances and times approximate).



## Summary of accommodation

**Ground Floor:** Entrance hall | W.C. | Two Living rooms | Kitchen room | Utility | Dining room

**First Floor:** Principal bedroom | Ensuite | Four further bedrooms | Shower room | Bathroom

## Garden and Grounds

Double garage | Workshop | Gardens

In all about 2 acres



## Situation

Times and distances are approximate

Oaktrees occupies a superb setting within a mile of the centre of Waltham St Lawrence village but in a quiet lane. The property is situated on the edge of the picturesque village of Waltham St. Lawrence. The village has many beautiful houses, a parish church, a village hall, a 15th-century public house, and an outstanding-rated primary school. Nearby, Twyford has a selection of everyday amenities, including several shops and supermarkets. Henley-on-Thames and Marlow also offer a good selection of local shopping facilities, restaurants and cafes. More extensive shopping facilities can be found in Maidenhead, Windsor, Camberley and Bracknell.



The M40 and M4 provide good road links to the western country and central London, and via the M25, they connect to Heathrow and Gatwick international airports.



Twyford's mainline station (part of the Crossrail/Elizabeth Line) provides services to London Paddington and central London, taking approximately 30 minutes.



The area offers an excellent range of schools, including Waltham St and Lawrence Primary School in the village (rated Outstanding by Ofsted). Notable independent schools include Dolphin, Shiplake College, Reading Blue Coat, Papplewick, Lambrook and Ludgrove.



Boating is available on the River Thames at various locations along the prime stretch, including the Royal Regatta course at Henley-on-Thames. Marina facilities are also available at Mill End, Harleyford, and Wargrave.







## Oaktrees

Oak Trees is a very good detached family house with five bedrooms, three bathrooms, and three reception rooms; all have a lovely outlook over the south-facing garden. The house is well presented and laid out, with attractive wooden floors in some ground-floor reception rooms. The kitchen/breakfast room has an oven, hob, and black granite worktops. It opens into a lovely dining room with a library recess. The principal reception room, with a handsome fireplace, has three sets of double doors opening onto the terrace. There is internal access to the utility room, a boot/dog room and integral double garage with a workshop. All rooms are well decorated, and the house is ready for occupation.

The principal bedroom suite has an en suite bathroom and a range of fitted wardrobes. There are four further bedrooms, one with an en suite shower room and all with fitted wardrobes. A family bathroom completes the first-floor accommodation.











# BEDROOMS & BATHROOMS







## Outside

Oaktrees is approached over a gravel drive with generous parking to the front and side of the house and with space for a potential extension. To the rear and South of the house is a paved terrace opening onto lawns with mature hedging on the boundaries providing privacy. The gardens are a lovely feature of the property. A horse chestnut and a cherry tree separate the lawn from the area which is being left to rewild for the local flora and fauna. This has the potential to be a paddock or possibly a tennis court.



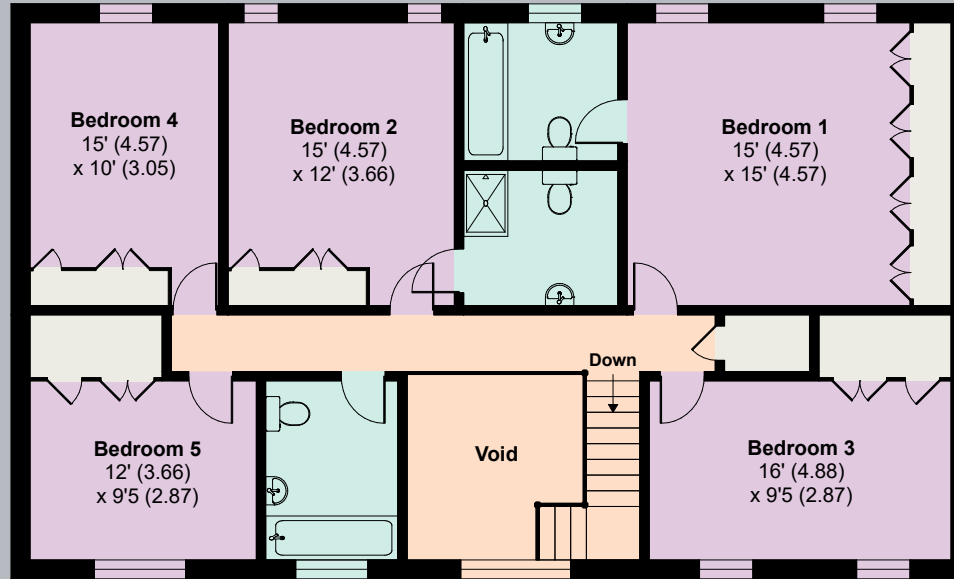
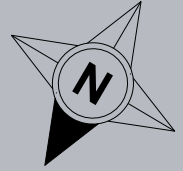
# FLOORPLANS

Approximate Gross Internal Floor Area

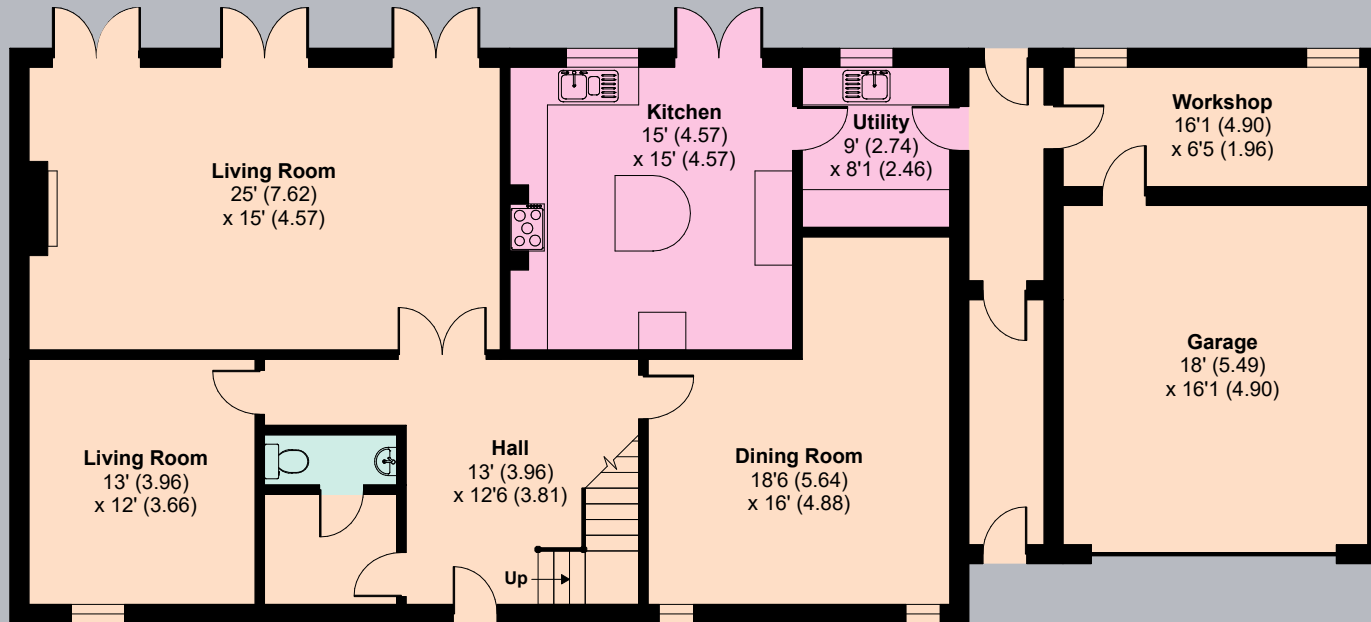
Main House: 272.2 sq m / 2,930 sq ft

Garage: 27 sq m / 291 sq ft

Total Area: 299.2 sq m / 3,221 sq ft



**FIRST FLOOR**



**GROUND FLOOR**

This plan is for guidance only and must not be relied upon as a statement of fact. Attention is drawn to the important notice on the last page of the text of the Particulars.



# Property Information

**Directions (RG10 ONN):**

From Henley go over the bridge and turn right on to the Wargrave Road. Continue on the A321 through Wargrave and Twyford, over the railway bridge. Continue straight onto Waltham Road B3018. Turn left onto Hungerford Lane and then left again on West End Lane for approximately 1 mile, turning slightly right on to Plough Lane. The property can be found on the right, just before Bears Copse on the left.

What3words: ///corrode.suspended.inflation

**Services:**

Mains electricity, water and oil-fired central heating.  
Private drainage.

**Tenure:**

Freehold.

**Local Authority:**

Windsor and Maidenhead Borough Council

**Council Tax:**

Band G

**EPC:**

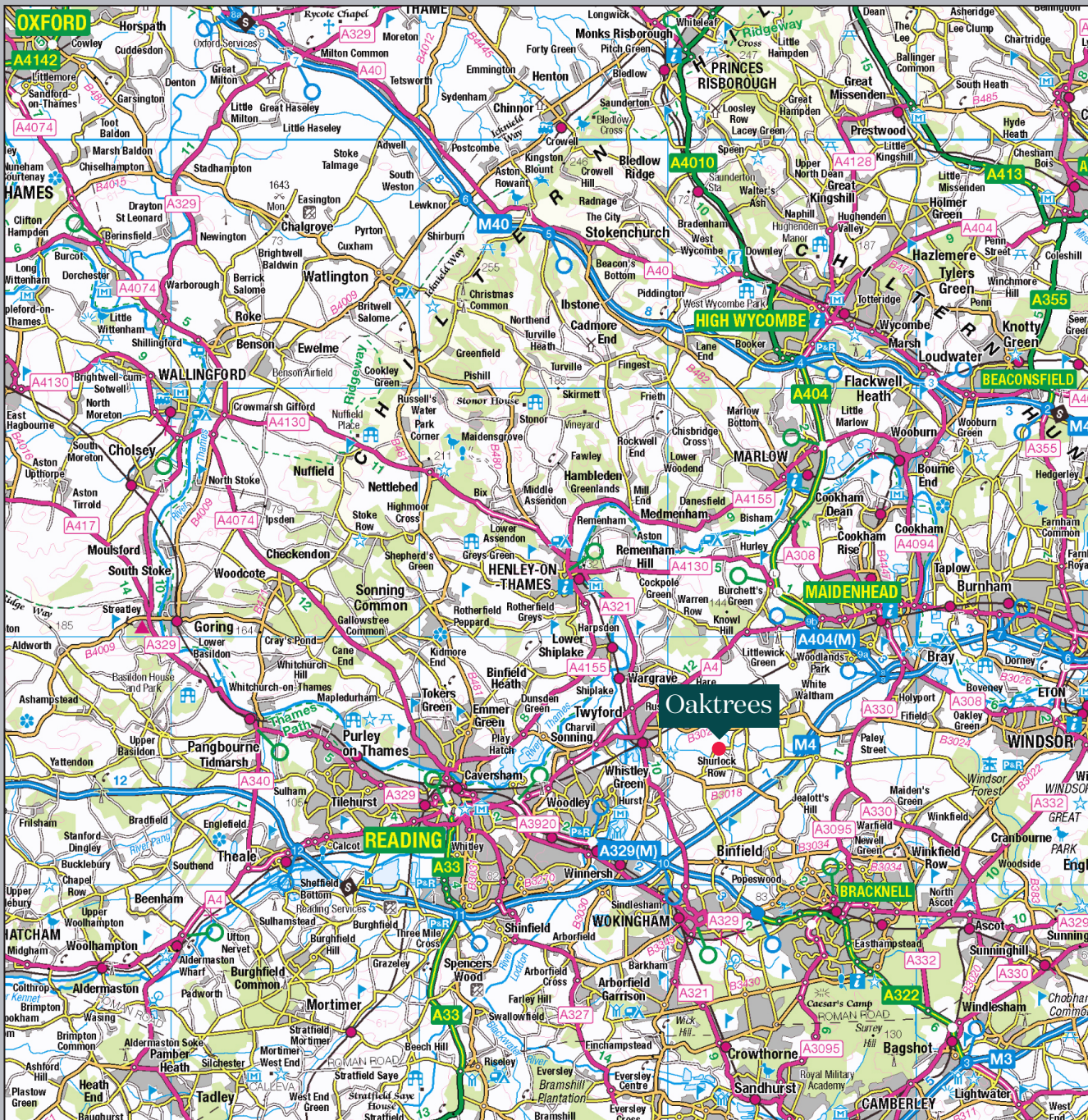
Band E

**Guide Price:**

£2,250,000

**Viewings:**

All viewings strictly by appointment only through the vendors' sole selling agents, Knight Frank LLP.







**Henley**  
20 Thameside  
Henley-on-Thames  
RG9 2LJ

**Nick Warner**  
01491 844901  
nick.warner@knightfrank.com

**knightfrank.co.uk**

Fixtures and fittings: A list of the fitted carpets, curtains, light fittings and other items fixed to the property which are included in the sale (or may be available by separate negotiation) will be provided by the Seller's Solicitors.

Important Notice: 1. Particulars: These particulars are not an offer or contract, nor part of one. You should not rely on statements by Knight Frank LLP in the particulars or by word of mouth or in writing ("information") as being factually accurate about the property, its condition or its value. Neither Knight Frank LLP nor any joint agent has any authority to make any representations about the property, and accordingly any information given is entirely without responsibility on the part of the agents, seller(s) or lessor(s). 2. Photos, Videos etc: The photographs, property videos and virtual viewings etc. show only certain parts of the property as they appeared at the time they were taken. Areas, measurements and distances given are approximate only. 3. Regulations etc: Any reference to alterations to, or use of, any part of the property does not mean that any necessary planning, building regulations or other consent has been obtained. A buyer or lessee must find out by inspection or in other ways that these matters have been properly dealt with and that all information is correct. 4. VAT: The VAT position relating to the property may change without notice. 5. To find out how we process Personal Data, please refer to our Group Privacy Statement and other notices at <https://www.knightfrank.com/legals/privacy-statement>.

Particulars dated May 2024. Photographs and videos dated May 2024.

All information is correct at the time of going to print. Knight Frank is the trading name of Knight Frank LLP. Knight Frank LLP is a limited liability partnership registered in England and Wales with registered number OC305934. Our registered office is at 55 Baker Street, London W1U 8AN. We use the term 'partner' to refer to a member of Knight Frank LLP, or an employee or consultant. A list of members names of Knight Frank LLP may be inspected at our registered office. If you do not want us to contact you further about our services then please contact us by either calling 020 3544 0692, email to [marketing.help@knightfrank.com](mailto:marketing.help@knightfrank.com) or post to our UK Residential Marketing Manager at our registered office (above) providing your name and address.