



The Brassworks Hyde Park Estate W2





The City of Westminster

Guide price
£2,400,000

Leasehold: approximately 125
years remaining



An exceptional two-bedroom apartment within an exclusive architecturally designed development. The Brassworks has been refurbished to a contemporary, highest specification whilst still preserving many original features.

The apartment comprises an impressive open kitchen, dining, reception and study area surrounding the internal courtyard. The apartment also offers a home cinema, two spacious double bedrooms both with walk-in wardrobes and en suite bathrooms. The property also boasts a guest cloakroom, utility area, lift, secure underground parking space, porter, air conditioning and underfloor heating throughout.

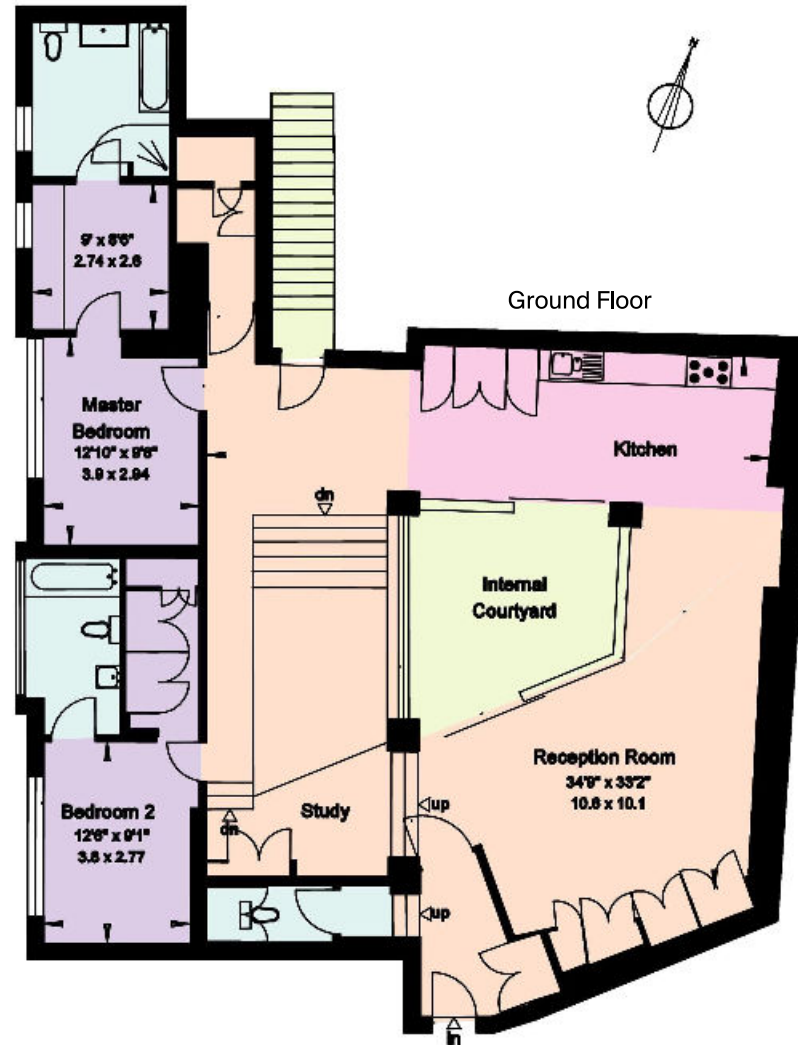
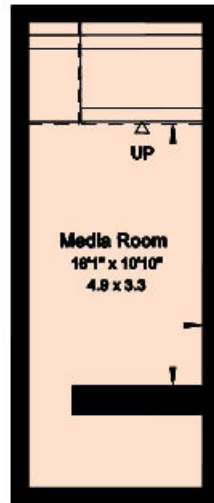
This apartment can be entered through the main building but also has private access through Archery Close.



Approximate Gross Internal Floor Area
181 sq m/1955 sq ft

This plan is for guidance only and must not be relied upon as a statement of fact. Attention is drawn to the Important Notice on the last page of the text of the Particulars

Lower Ground Floor



Knight Frank
 Hyde Park
 1 Craven Terrace
 London
 W2 3QD

[knightfrank.co.uk](https://www.knightfrank.co.uk)

We would be delighted to tell you more.

020 7871 5060
hydepark@knightfrank.com



Connecting people & property, perfectly.

Fixtures and fittings: A list of the fitted carpets, curtains, light fittings and other items fixed to the property which are included in the sale (or may be available by separate negotiation) will be provided by the Seller's Solicitors.

Important Notice: 1. Particulars: These particulars are not an offer or contract, nor part of one. You should not rely on statements by Knight Frank LLP in the particulars or by word of mouth or in writing ("information") as being factually accurate about the property, its condition or its value. Neither Knight Frank LLP nor any joint agent has any authority to make any representations about the property, and accordingly any information given is entirely without responsibility on the part of the agents, seller(s) or lessor(s). 2. Photos, Videos etc: The photographs, property videos and virtual viewings etc. show only certain parts of the property as they appeared at the time they were taken. Areas, measurements and distances given are approximate only. 3. Regulations etc: Any reference to alterations to, or use of, any part of the property does not mean that any necessary planning, building regulations or other consent has been obtained. A buyer or lessee must find out by inspection or in other ways that these matters have been properly dealt with and that all information is correct. 4. VAT: The VAT position relating to the property may change without notice. 5. To find out how we process Personal Data, please refer to our Group Privacy Statement and other notices at <https://www.knightfrank.com/legals/privacy-statement>.

Particulars dated October 2020. Photographs and videos dated April 2019.

Knight Frank is the trading name of Knight Frank LLP. Knight Frank LLP is a limited liability partnership registered in England and Wales with registered number OC305934. Our registered office is at 55 Baker Street, London W1U 8AN where you may look at a list of members' names. If we use the term 'partner' when referring to one of our representatives, that person will either be a member, employee, worker or consultant of Knight Frank LLP and not a partner in a partnership. If you do not want us to contact you further about our services then please contact us by either calling 020 3544 0692, email to marketing.help@knightfrank.com or post to our UK Residential Marketing Manager at our registered office (above) providing your name and address.